

District I
PO Box 1980, Hobbs, NM 88241-1980

District II
811 South First, Artesia, NM 88210

District III
1000 Rio Brazos Rd., Aztec, NM 87410

District IV
2040 South Pacheco, Santa Fe, NM 87505

State of New Mexico
Energy, Minerals & Natural Resources Department

OIL CONSERVATION DIVISION

2040 South Pacheco
Santa Fe, NM 87505

Form C-101
Revised October 18, 1994

Instructions on back
Submit to Appropriate District Office
State Lease - 6 Copies
Fee Lease - 5 Copies

☐ AMENDED REPORT

APPLICATION FOR PERMIT TO DRILL, RE-ENTER, DEEPEN, PLUGBACK, OR ADD A ZONE

¹ Operator Name and Address SDX Resources, Inc. PO Box 5061 Midland, TX 79704 915/685-1761		² OGRID Number 020451
		³ API Number 30 - 0 15 - 32456
⁴ Property Code 28535	⁵ Property Name Welch RL State	⁶ Well No. 6

⁷Surface Location

UL or lot no.	Section	Township	Range	Lot Idn	Feet from the	North/South line	Feet from the	East/West Line	County
C	28	17S	28E		990	North	1650	West	Eddy

⁸Proposed Bottom Hole Location If Different From Surface

UL or lot no.	Section	Township	Range	Lot Idn	Feet from the	North/South line	Feet from the	East/West Line	County
⁹ Proposed Pool 1 Red Lake, SA					¹⁰ Proposed Pool 2				

¹¹ Work Type Code N	¹² Well Type Code O	¹³ Cable/Rotary R	¹⁴ Lease Type Code S	¹⁵ Ground Level Elevation 3617
¹⁶ Multiple No	¹⁷ Proposed Depth 4000	¹⁸ Formation San Andres	¹⁹ Contractor United Drilg	²⁰ Spud Date 10-15-02

²¹Proposed Casing and Cement Program

Hole Size	Casing Size	Casing weight/foot	Setting Depth	Sacks of Cement	Estimated TOC
12-1/4"	8-5/8"	24#	350	350 sx Cl C	Surf
7-7/8"	5-1/2"	14#	4000	350 POZ 400 Lite	Surf

²²Describe the proposed program. If this application is to DEEPEN or PLUG BACK give the data on the present productive zone and proposed new productive zone. Describe the blowout prevention program, if any. Use additional sheets if necessary.

Plan to drill a 12-1/4" hole to appx 350' & set 8-5/8" surf csg to 350'. Circ Cl C cmt. Drill 7-7/8" hole to TD (4000'). Run OH logs. Run 5-1/2" csg & circ cmt. Perf the SA zone & stimulate as necessary for optimum production.

²³I hereby certify that the information given above is true and complete to the best of my knowledge and belief.

Signature:

Bonnie Atwater

Printed name: Bonnie Atwater

Title: Regulatory Tech 9/24/02

OIL CONSERVATION DIVISION

Approved By:

ORIGINAL SIGNED BY TIM W. GUM
DISTRICT II SUPERVISOR

Title:

Approval Date: SEP 27 2002

Expiration Date: SEP 27 2003

District I
1625 N. French Dr. Hobbs, NM 88240

District II
811 South First, Artesia, NM 88210

District III
1000 Rio Brazos Rd., Aztec NM 87410

District IV
2040 South Pacheco, Santa Fe, NM 87505

State of New Mexico
Energy, Minerals & Natural Resources

OIL CONSERVATION DIVISION

2040 South Pacheco
Santa Fe, N M 87505

Form C-102

Revised March 17, 1999
Submit to Appropriate District Office
State Lease - 4 Copies
Fee Lease - 3 Copies

☐ AMENDED REPORT

WELL LOCATION AND ACREAGE DEDICATION PLAT

API Number		Pool Code 51000	Pool Name Red Lake, ON CB SA
Property Code 28535	Property Name WELCH RL STATE		Well Number 6
OGRID No. 020451	Operation Name SDX RESOURCES, INC.		Elevation 3617

Surface Location

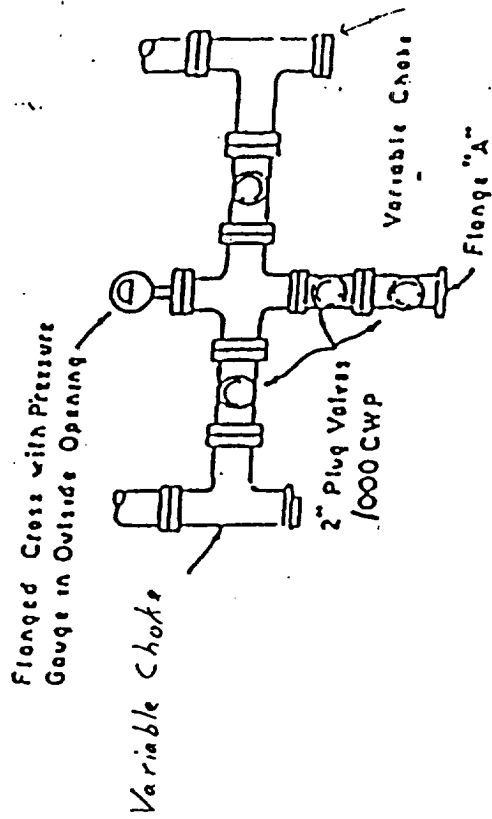
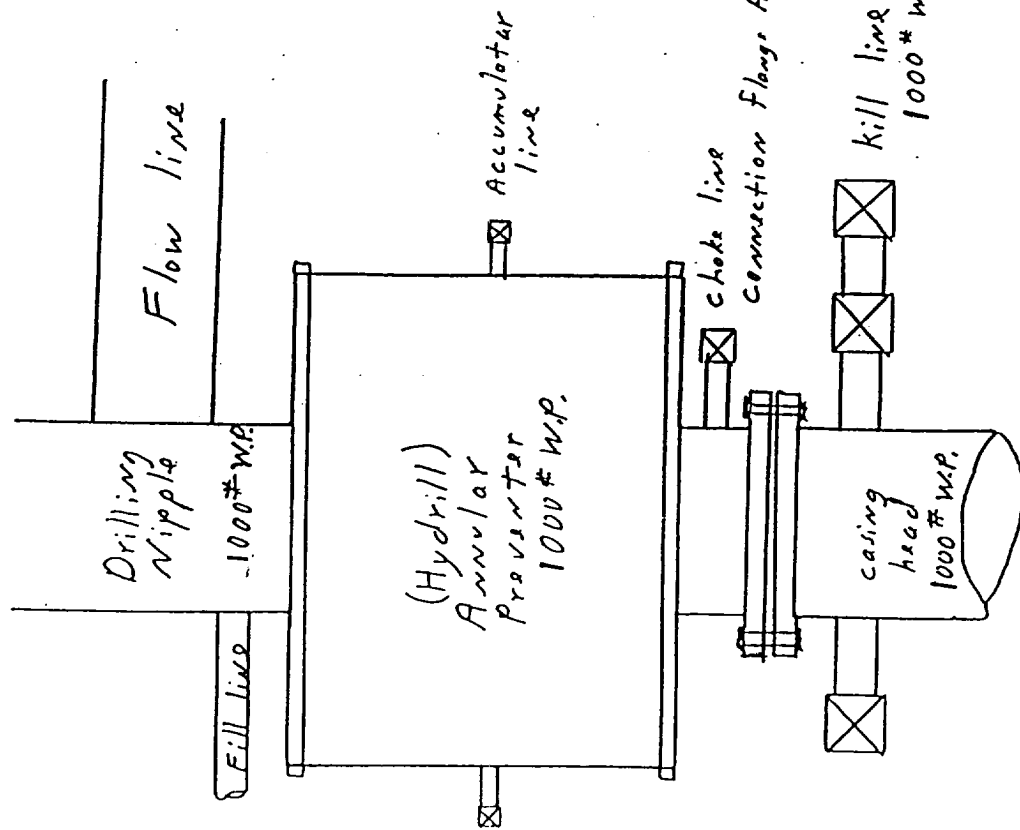
UL or Lot No. C	Section 28	Township 17-S	Range 28-E	Lot Idn.	Feet from the 990	North/South line NORTH	Feet from the 1650	East/West line WEST	County EDDY
--------------------	---------------	------------------	---------------	----------	----------------------	---------------------------	-----------------------	------------------------	----------------

Bottom Hole Location If Different From Surface

UL or Lot No.	Section	Township	Range	Lot Idn.	Feet from the	North/South line	Feet from the	East/West line	County
Dedicated Acres 40	Joint or Infill	Consolidation Code	Order No.						

NO ALLOWABLE WILL BE ASSIGNED TO THIS COMPLETION UNTIL ALL INTEREST HAVE BEEN CONSOLIDATED OR A NON-STANDARD UNIT HAS BEEN APPROVED BY THE DIVISION

<p>990'</p> <p>1650'</p>	OPERATOR CERTIFICATION I HEREBY CERTIFY THAT THE INFORMATION HEREIN IS TRUE AND CORRECT TO THE BEST OF MY KNOWLEDGE AND BELIEF.	
	Signature <i>Bonnie Atwater</i>	
	Printed Name Bonnie Atwater	
	Title Regulatory Tech	
	Date 9/20/02	
	SURVEYOR CERTIFICATION I HEREBY CERTIFY THAT THE WELL LOCATION SHOWN ON THIS PLAT WAS PLOTTED FROM FIELD NOTES OF ACTUAL SURVEYS MADE BY ME OR UNDER MY SUPERVISION, AND THAT THE SAME IS TRUE AND CORRECT TO THE BEST OF MY KNOWLEDGE AND BELIEF.	
	Date of Survey SEP 20 2002	
	Signature and Seal of Professional Surveyor	
	NM PL 8455412 Certificate Number	



PLAN VIEW - CHOKE MANIFOLD

Exhibit #2