

DEPARTMENT OF THE INTERIOR  
BUREAU OF LAND MANAGEMENT

Expires: February 28, 1995

APPLICATION FOR PERMIT TO DRILL OR DEEPEN

Artesia, NM 88210

1. TYPE OF WORK

DRILL ☒ DEEPEN ☒

2. TYPE OF WELL

OIL WELL ☐ WATER WELL ☒

3. NAME OF OPERATOR

CONCHO OIL & GAS CORP.

(ERICK NELSON 915-683-7443)

4. ADDRESS AND TELEPHONE NO.

110 WEST LOUISIANA SUITE 410 MIDLAND, TEXAS 79701 (915-683-7443)

5. LOCATION OF WELL (Report location clearly and in accordance with any State requirements.)\*

At surface

1360' FNL & 1980' FWL SECTION 14 T16S-R28E EDDY CO. NM

At proposed prod. zone

SAME

6. DISTANCE IN MILES AND DIRECTION FROM NEAREST TOWN OR POST OFFICE\*

Approximately 15 miles Northeast of Artesia New Mexico

7. DISTANCE FROM PROPOSED\*

LOCATION TO NEAREST PROPERTY OR LEASE LINE, FT. (Also to nearest drlg. unit line, if any)

1360'

8. NO. OF ACRES IN LEASE

960

9. NO. OF ACRES ASSIGNED TO THIS WELL

320

10. DISTANCE FROM PROPOSED\* TO NEAREST WELL, DRILLING, COMPLETED, OR APPLIED FOR, ON THIS LEASE, FT.

NA

11. PROPOSED DEPTH

9800

12. ROTARY OR CABLE TOOLS

ROTARY

13. ELEVATIONS (Show whether DF, RT, GR, etc.)

3569' GR.

Koswell Controlled Water Basin

14. APPROX. DATE WORK WILL START\*

When approved

15. PROPOSED CASING AND CEMENTING PROGRAM

SIZE OF HOLE	GRADE, SIZE OF CASING	WEIGHT PER FOOT	SETTING DEPTH	QUANTITY OF CEMENT
25"	Conductor	NA	40'	Cement to surface with Redi-mix
17½"	H-40 13 3/8"	48	350'	400 Sx. circulate cement.
12¼"	J-55 8 5/8"	32	2000'	800 Sx. " "
7 7/8"	N-80 4½"	11.6	9800'	900 Sx. estimate top cement 6000'

1. Drill 25" hole to 40'. Set 40' of 20" conductor pipe and cement to surface with Redi-mix.
2. Drill 17½" hole to 350'. Run and set 350' of 13 3/8" 48# H-40 ST&C casing. Cement with 400 Sx. of Class "C" cement + ¼# Flocele/Sx. + 2% CaCl, circulate cement to surface.
3. Drill 12¼" hole to 2000'. Run and set 2000' of 8 5/8" 32# J-55 ST&C casing. Cement with 600 Sx. of Class "C" Light cement + ¼# Flocele/Sx, + 5# Gilsonite/Sx, tail in with 200 Sx. of Class "C" cement + 2% CaCl, circulate cement to surface.
4. Drill 7 7/8" hole to 9800'. Run and set 9800' of 4½" 11.6# N-80 LT&C casing. Cement with 400 Sx. of Class "H" Light weight cement + additives, tail in with 500 Sx. of Class "H" Premium Plus cement + additives, estimate top of cement 6000' from surface.

APPROVAL SUBJECT TO  
GENERAL REQUIREMENTS AND  
SPECIAL STIPULATIONS  
ATTACHED

IN ABOVE SPACE DESCRIBE PROPOSED PROGRAM: If proposal is to deepen, give data on present lease and proposed new productive zone. If proposal is to drill or deepen directionally, give pertinent data on subsurface locations and measured and true vertical depths. Give blowout preventer program, if any.

24.

SIGNED

TITLE

Agent

DATE 06/20/02

(This space for Federal or State office use)

PERMIT NO.

APPROVAL DATE

Application approval does not warrant or certify that the applicant holds legal or equitable title to those rights in the subject lease which would entitle the applicant to conduct operations thereon.  
CONDITIONS OF APPROVAL, IF ANY:

APPROVED BY

/s/ JOE G. LARA

TITLE

ACTING FIELD MANAGER

DATE

OCT 16 2002

\*See Instructions On Reverse Side

APPROVAL FOR 1 YEAR

DISTRICT I  
1625 N. French Dr., Hobbs, NM 88240

DISTRICT II  
811 South First, Artesia, NM 88210

DISTRICT III  
1000 Rio Brazos Rd., Aztec, NM 87410

DISTRICT IV  
2040 South Pacheco, Santa Fe, NM 87505

State of New Mexico  
Energy, Minerals and Natural Resources Department

Form C-102  
Revised March 17, 1999

Submit to Appropriate District Office  
State Lease - 4 Copies  
Fee Lease - 3 Copies

OIL CONSERVATION DIVISION  
2040 South Pacheco  
Santa Fe, New Mexico 87505

☐ AMENDED REPORT

WELL LOCATION AND ACREAGE DEDICATION PLAT

API Number	Pool Code 76079	Pool Name DIAMOND MOUND-MORROW
Property Code	Property Name CROW FLATS "14" FEDERAL	Well Number 1
OGRID No. 193407	Operator Name CONCHO RESOURCES, INC.	Elevation 3569'

Surface Location

UL or lot No.	Section	Township	Range	Lot Idn	Feet from the	North/South line	Feet from the	East/West line	County
F	14	16 S	28 E		1360	NORTH	1980	WEST	EDDY

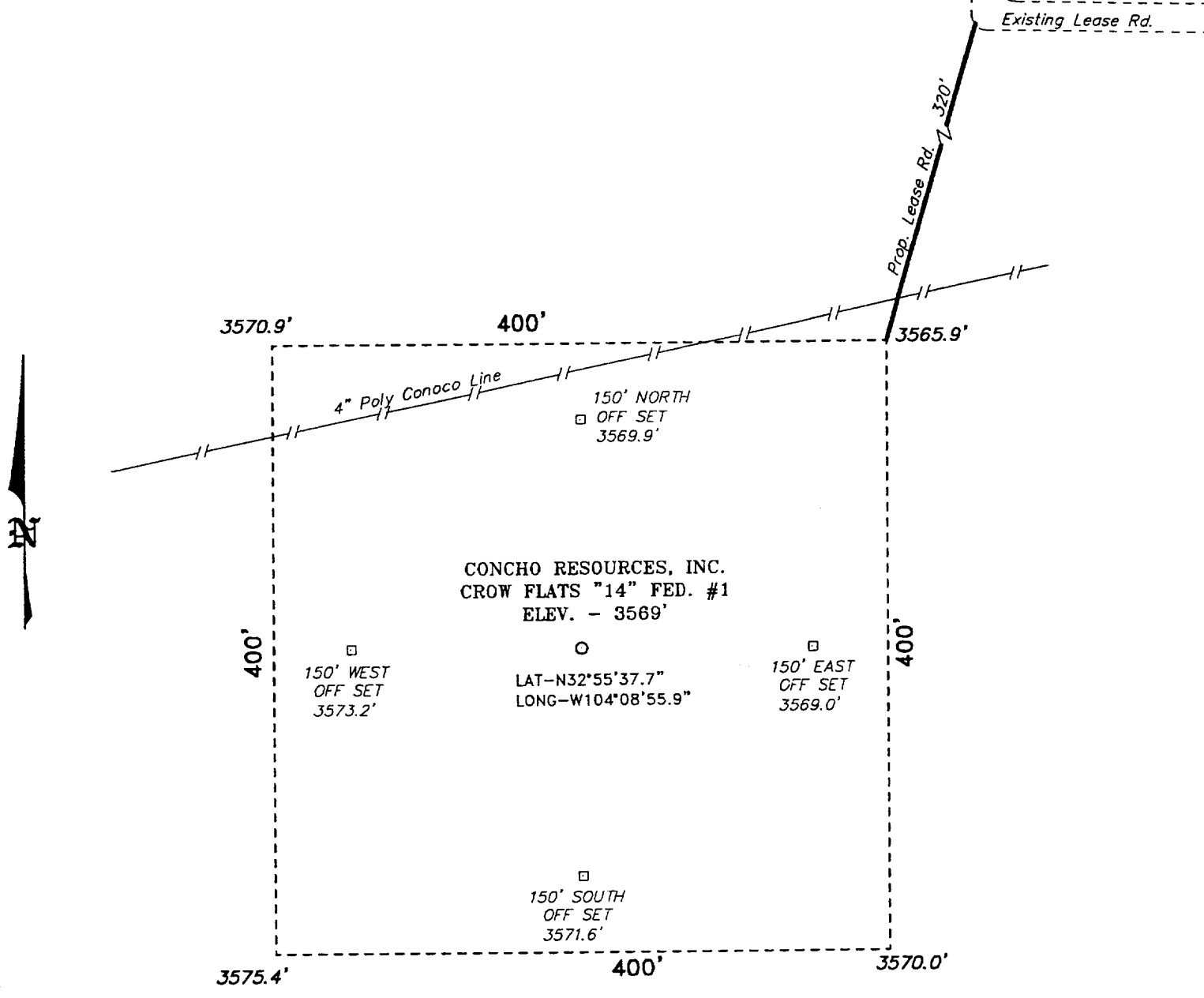
Bottom Hole Location If Different From Surface

UL or lot No.	Section	Township	Range	Lot Idn	Feet from the	North/South line	Feet from the	East/West line	County
Dedicated Acres 320	Joint or Infill	Consolidation Code	Order No.						

NO ALLOWABLE WILL BE ASSIGNED TO THIS COMPLETION UNTIL ALL INTERESTS HAVE BEEN CONSOLIDATED  
OR A NON-STANDARD UNIT HAS BEEN APPROVED BY THE DIVISION

	<p>OPERATOR CERTIFICATION</p> <p>I hereby certify the the information contained herein is true and complete to the best of my knowledge and belief.</p> <p><i>Joe T. Janica</i> Signature Joe T. Janica Printed Name Agent Title 06/20/02 Date</p> <p>SURVEYOR CERTIFICATION</p> <p>I hereby certify that the well location shown on this plat was plotted from field notes of actual surveys made by me or under my supervision and that the same is true and correct to the best of my belief.</p> <p>JUNE 11 2002 Date Surveyed Signature &amp; Seal of Professional Surveyor W.C. No. 2552A Certificate No. Gary Jones 7977 BASIN SURVEYS</p>
--	---

**SECTION 14, TOWNSHIP 16 SOUTH, RANGE 28 EAST, N.M.P.M.,  
EDDY COUNTY, NEW MEXICO.**



**DIRECTIONS TO LOCATION:**

FROM THE JUNCTION OF US HWY 82 AND CO. RD.  
214(BARNAVAL DRAW RD.) 4.3 MILES WEST OF LOCO HILLS,  
GO NORTHERLY ON 214 FOR 6.8 MILES TO A LEASE ROAD  
LEFT; THENCE GO NORTHWESTERLY 4.3 MILES TO A "Y" AND  
TAKE LEFT FORK FOR 1.6 MILE TO AN OLD LEASE ROAD  
LEFT; THENCE GO SOUTHEASTERLY FOR 0.4 MILE TO  
PROPOSED LEASE ROAD RIGHT.

**BASIN SURVEYS** P.O. BOX 1786 - HOBBS, NEW MEXICO

W.O. Number: 2552 Drawn By: K. GOAD

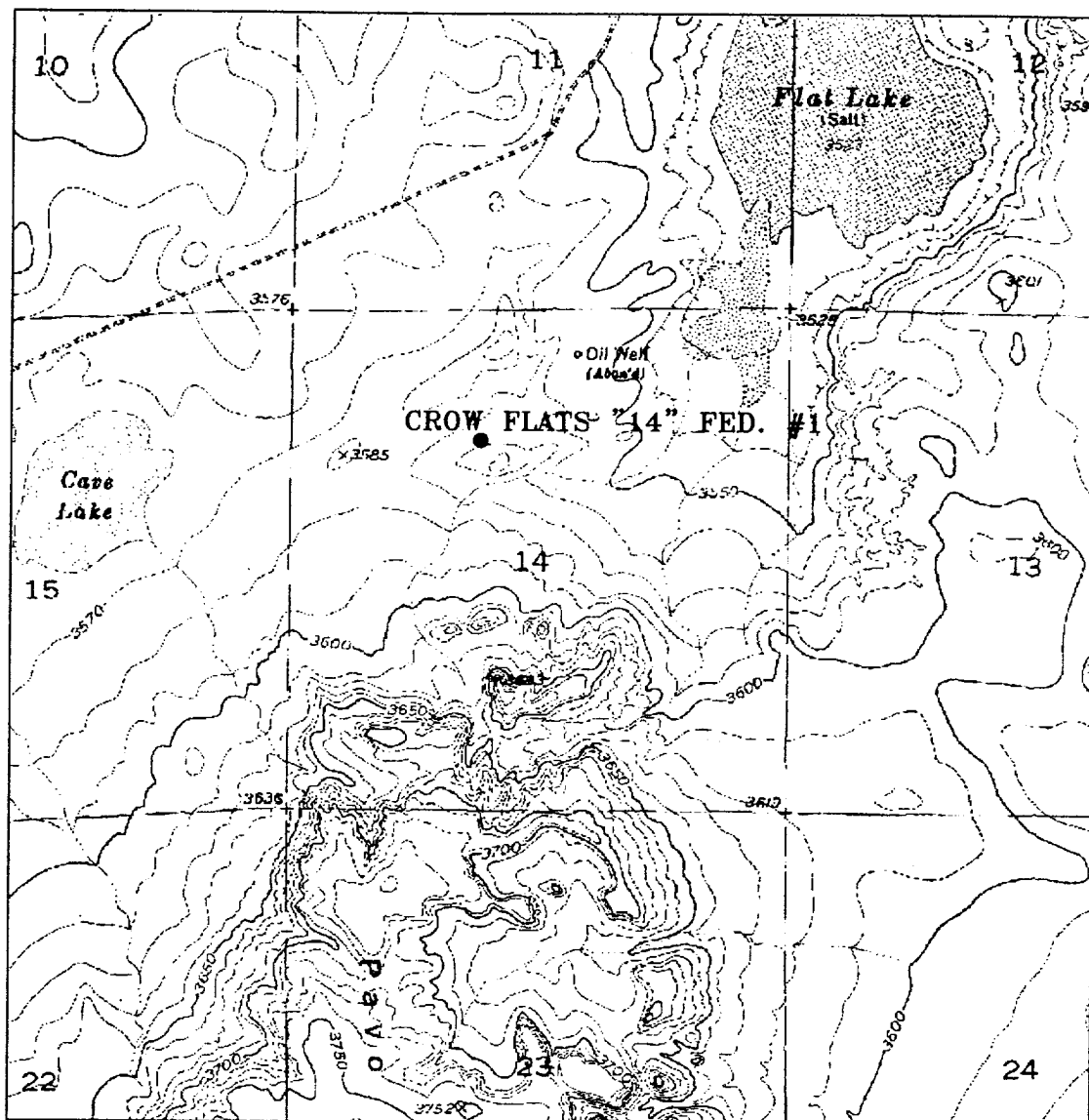
Date: 06-12-2002 Disk: KJG CD#4 - 2552A.DWG

**CONCHO RESOURCES, INC.**

REF: CROW FLATS "14" FED. No. 1 / Well Pad Topo

THE CROW FLATS "14" No. 1 LOCATED 1360' FROM  
THE NORTH LINE AND 1980' FROM THE WEST LINE OF  
SECTION 14, TOWNSHIP 16 SOUTH, RANGE 28 EAST,  
N.M.P.M., EDDY COUNTY, NEW MEXICO.

Survey Date: 06-11-2002 Sheet 1 of 1 Sheets



# **CROW FLATS "14" FED. #1**

Located at 1360' FNL and 1980' FWL

Section 14, Township 16 South, Range 28 East,  
N.M.P.M., Eddy County, New Mexico.



P.O. Box 1786  
1120 N. West County Rd.  
Hobbs, New Mexico 88241  
(505) 393-7316 - Office  
(505) 392-3074 - Fax  
basinsurveys.com

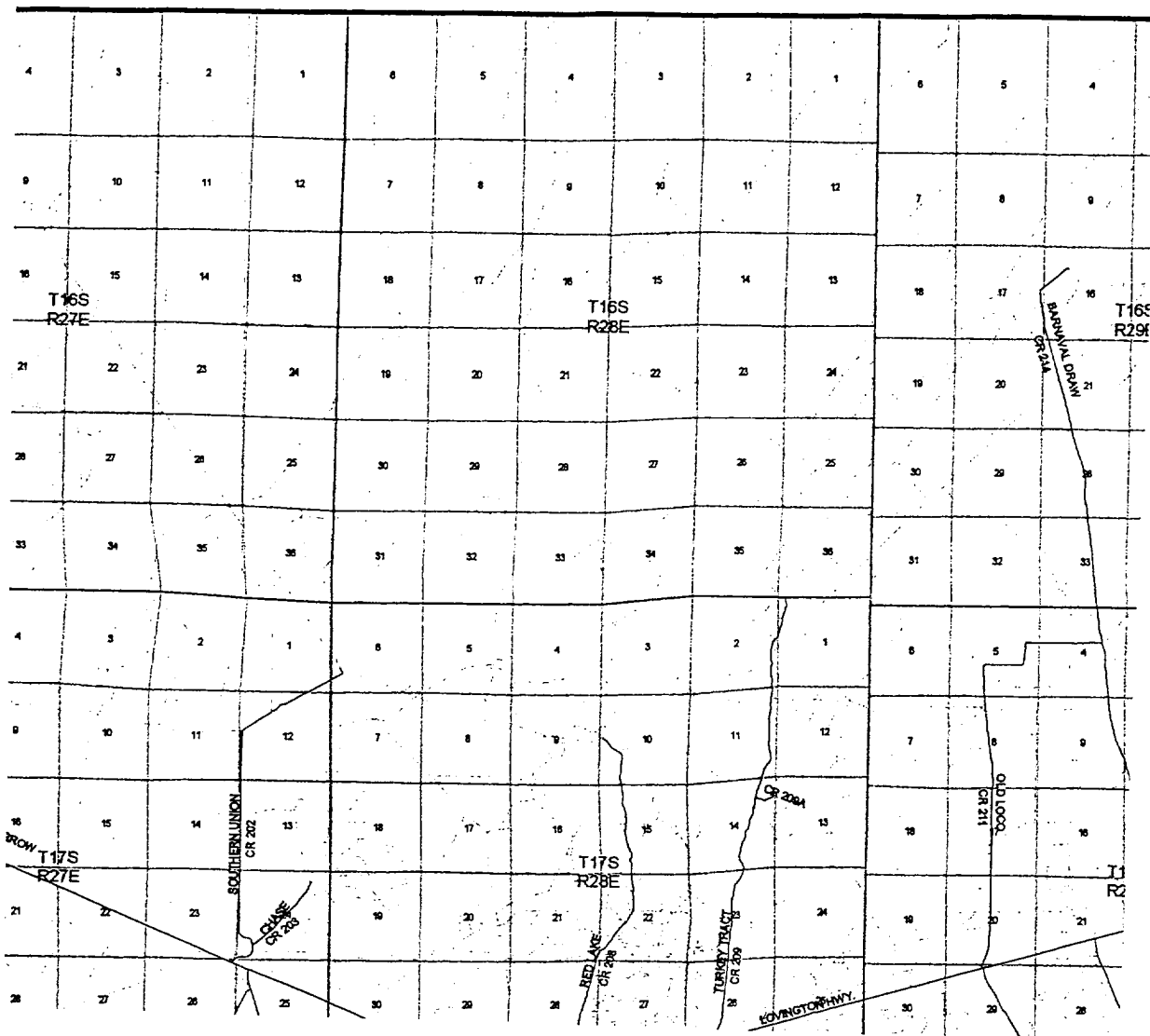
W.O. Number: 2552AA - KJG CD#5

Survey Date: 06-11-2002

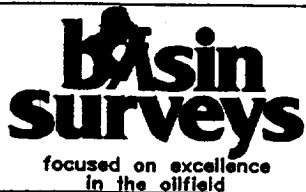
Scale: 1" = 2000'

Date: 06-12-2002

**CONCHO  
RESOURCES,  
INC.**



CROW FLATS "14" FED. #1  
 Located at 1360' FNL and 1980' FWL  
 Section 14, Township 16 South, Range 28 East,  
 N.M.P.M., Eddy County, New Mexico.



P.O. Box 1786  
 1120 N. West County Rd.  
 Hobbs, New Mexico 88241  
 (505) 393-7316 - Office  
 (505) 392-3074 - Fax  
 basinsurveys.com

W.O. Number: 2552AA - KJG CD#5

Survey Date: 06-11-2002

Scale: 1" = 2 MILES

Date: 06-12-2002

CONCHO  
 RESOURCES,  
 INC.

CONCHO OIL & GAS CORP.  
 CROW FLATS "14" FEDERAL # 1  
 UNIT "F" SECTION 14  
 T16S-R28E EDDY CO. NM

In response to questions asked under Section II of Bulletin NTL-6 the following information on the above well is provided for your consideration.

1. Location: 1360' FNL & 1980' FWL SECTION 14 T16S-R28E EDDY CO. NM
2. Elevation above Sea Level: 3569' GR.
3. Geologic name of surface formation: Quaternary Aeolian Deposits.
4. Drilling tools and associated equipment: Conventional rotary drilling rig using drilling mud as a circulating medium for solids removal from hole.
5. Proposed drilling depth: 9800'
6. Estimated tops of geological markers:

Seven Rivers	275'	Wolfcamp	6450'
San Andres	1750'	Penn	7480'
Tubb	4410'	Morrow	8900'
Abo	5130'	Mississippian	9500'
7. Possible mineral bearing formations:

Wolfcamp	Oil	Morrow	Gas
Penn	Oil	Mississippian	Gas
8. Casing program:

Hole size	Interval	OD of casing	Weight	Thread	Collar	Grade
25"	0-40'	20"	NA	NA	NA	Conductor
17½"	0-350'	13 3/8"	48#	8-R	ST&C	H-40
12½"	0-2000'	8 5/8"	32#	8-R	ST&C	J-55
7 7/8"	0-9800'	4½"	11.6#	8-R	LT&C	N-80

## APPLICATION TO DRILL

CONCHO OIL & GAS CORP.  
 CROW FLATS "14" FEDERAL # 1  
 UNIT "F" SECTION 14  
 T16S-R28E EDDY CO. NM

9. CASING CEMENTING & SETTING DEPTH:

20"	Conductor	Set 40' of 20" conductor and cement to surface with Redi-mix.
13 3/8"	Surface	Set 350' of 13 3/8" 48# H-40 ST&C casing. Cement with 400 Sx. of Class "C" cement + 1/4# Flocele/Sx. + 2% CaCl circulate cement to surface.
8 5/8"	Intermediate	Set 2000' of 8 5/8" 32# J-55 ST&C casing. Cement with 600 Sx. of Class "C" Light Weight cement + 1/4# Flocele/Sx. + 5# Gilsonite/Sx. tail in with 200 Sx. of Class "C" + 2% CaCl, circulate cement to surface.
4 1/2"	Production	Set 9800' of 4 1/2" 11.6# N-80 LT&C casing. Cement with 400 Sx. of Class "H" Light Weight cement + additives, tail in with 500 Sx. of Class "H" Premium cement + additives, estimate top of cement 6000'.

10. PRESSURE CONTROL EQUIPMENT: Exhibit "E" shows a 900 Series 3000 PSI working pressure B.O.P. consisting of an annular bag type preventor, middle blind rams and bottom pipe rams. The B.O.P. will be nipped up on the 13 3/8" casing and tested to API specifications. The B.O.P. will be operated at least once in each 24 hour period and the blind rams will be operated when drill pipe is out of hole on trips. Full opening stabbing valve and upper kelly cock will be utilized. Exhibit "E-1" shows a hydraulically operated closing unit and a 2" 3000 PSI choke manifold with dual adjustable chokes. No abnormal pressures or temperatures are expected.

11. PROPOSED MUD CIRCULATING SYSTEM:

DEPTH	MUD WT.	VISC.	FLUID LOSS	TYPE MUD SYSTEM
40-350'	8.5-8.7	29-32	NC	Fresh water use paper to control seepage.
350-2000'	8.5-8.7	29-38	NC	Fresh water use paper to control seepage and high viscosity sweeps to clean hole.
2000-8500'	10.1-10.3	29-38	NC	Brine water add paper to control seepage and high viscosity sweeps to clean hole, Soda Ash for pH.
8500-9800'	10.1-10.3	34-40	10 cc or less	Brine water add salt water Gel, Drispac system for water loss control lime for pH control and high viscosity sweeps to clean hole.

Sufficient mud materials will be kept on location at all times in order to combat lost circulation, or unexpected kicks. In order to run DST's, open hole logs, and casing viscosity and/or water loss may have to be adjusted to meet these needs.

CONCHO OIL & GAS CORP.  
CROW FLATS "14" FEDERAL # 1  
UNIT "F" SECTION 14  
T16S-R28E EDDY CO. NM

12. LOGGING, CORING, AND TESTING PROGRAM:

- A. Open hole logs: Dual Laterolog, CNL, LDT, Gamma Ray, Caliper from TD to 2000'. Run Gamma Ray, Neutron from 2000' to surface.
- B. Mud logger will be placed on hole at 2000' and remain on hole to TD.
- C. DST's and cores will be taken as shows dictate.

13. POTENTIAL HAZARDS:

No abnormal pressures or temperatures are expected. There is no known presence of H<sup>2</sup>S in this area. If H<sup>2</sup>S is encountered the operator will comply with the provisions of Onshore Oil and Gas Order No. 6. No lost circulation is expected to occur. All personnel will be familiar with all aspects of safe operation of equipment being used to drill this well. Estimated BHP 4500 PSI, and Estimated BHT 155°.

14. ANTICIPATED STARTING DATE AND DURATION OF OPERATION:

Road and location construction will begin after the BLM has approved the APD. Anticipated spud date will be as soon after BLM approval and as soon as a rig will be available. Move in operation and drilling is expected to take 28 days. If production casing is run then an additional 30 days will be needed to complete well and construct surface facilities and/or lay flowlines in order to place well on production.

15. OTHER FACETS OF OPERATIONS:

After running casing, cased hole Gamma Ray, Neutron Collar logs will be run from TD back to all possible productive zones. The Mississippian formation will be perforated and stimulated in order to establish production. The well will be swab tested and potentialled as a gas well.



## HYDROGEN SULFIDE DRILLING OPERATIONS PLAN

1. All Company and Contract personnel admitted on location must be trained by a qualified H<sub>2</sub>S safety instructor to the following:
  - A. Characteristics of H<sub>2</sub>S
  - B. Physical effects and hazards
  - C. Proper use of safety equipment and life support systems.
  - D. Principle and operation of H<sub>2</sub>S detectors, warning system and briefing areas.
  - E. Evacuation procedure, routes and first aid.
  - F. Proper use of 30 minute pressure demand air pack.
2. H<sub>2</sub>S Detection and Alarm Systems
  - A. H<sub>2</sub>S detectors and audio alarm system to be located at bell nipple, end of blowie line (mud pit) and on derrick floor or doghouse.
3. Windsock and/or wind streamers
  - A. Windsock at mudpit area should be high enough to be visible.
  - B. Windsock at briefing area should be high enough to be visible.
  - C. There should be a windsock at entrance to location.
4. Condition Flags and Signs
  - A. Warning sign on access road to location.
  - B. Flags to be displayed on sign at entrance to location. Green flag, normal safe condition. Yellow flag indicates potential pressure and danger. Red flag, danger, H<sub>2</sub>S present in dangerous concentration. Only emergency personnel admitted to location.
5. Well control equipment
  - A. See exhibit "E"
6. Communication
  - A. While working under masks chalkboards will be used for communication.
  - B. Hand signals will be used where chalk board is inappropriate.
  - C. Two way radio will be used to communicate off location in case of emergency help is required. In most cases cellular telephones will be available at most drilling foreman's trailer or living quarters.
7. Drillstem Testing
  - A. Exhausts will be watered.
  - B. Flare line will be equipped with an electric ignitor or a propane pilot light in case gas reaches the surface.
  - C. If location is near any dwelling a closed D.S.T. will be performed.

## HYDROGEN SULFIDE DRILLING OPERATIONS PLAN

8. Drilling contractor supervisor will be required to be familiar with the effects  $H_2S$  has on tubular goods and other mechanical equipment.
9. If  $H_2S$  is encountered, mud system will be altered if necessary to maintain control of formation. A mud gas separator will be brought into service along with  $H_2S$  scavengers if necessary.

SURFACE USE PLAN

CONCHO OIL & GAS CORP.  
CROW FLATS "14" FEDERAL # 1  
UNIT "F" SECTION 14  
T16S-R28E EDDY CO. NM

1. EXISTING ROADS: Area maps, Exhibit "B" is a reproduction of a County General Hi-way Map. Exhibit "C" is a reproduction of a USGS Topographic map, showing existing and proposed roads. All existing roads will be maintained in a condition equal to or better than current conditions. Any new roads will be constructed to BLM specifications.
  - A. Exhibit "A" shows the location of the proposed well site as staked.
  - B. From Loco Hills New Mexico go West on U.S. Hi-way 82 4.5 miles to CR 214 turn North go 6.7 miles bear Northwest go 2.2 miles bear Right follow road 1.6 miles go off Caprock follow road Southwest for 2 miles± turn Left go .5 miles and location is on the West side of road.
  - C. If well is productive lay flowlines along road R-O-W's to sales line.
2. PLANNED ACCESS ROADS: Approximately 350' of new road will be constructed.
  - A. The access road will be crowned and ditched to a 12' wide traveled surface with a 40' Right-of-Way.
  - B. Gradient on all roads will be less than 5% if possible.
  - C. Turn-outs will be constructed where necessary.
  - D. If needed the roads will be surfaced to the BLM requirements with material obtained from a local source.
  - E. Center line for the new access road will be flagged.
  - F. The road will be constructed to utilize low water crossings where drainage currently exist, and Culverts will be installed where necessary.
3. EXHIBIT "A-1" SHOWS WELLS AND DRY HOLES WITHIN A 1 MILE RAIDUS.

A. Water wells	-	None known
B. Disposal wells	-	None known
C. Drilling wells	-	None known
D. Producing wells	-	As shown on Exhibit "A-1"
E. Abandoned wells	-	As shown on Exhibit "A-1"

CONCHO OIL & GAS CORP.  
CROW FLATS "14" FEDERAL # 1  
UNIT "F" SECTION 14  
T16S-R28E EDDY CO. NM

4. If on completion this well is a producer the operator will lay pipelines and construct powerlines along existing road R-O-W's or other existing R-O-W's. Possible routes of pipelines, flowlines and powerlines are shown on Exhibit "F".

5. LOCATION AND TYPE OF WATER SUPPLY:

Water will be purchased locally from a commercial source and trucked over the access roads or piped to location in flexible lines laid on top of the ground.

6. SOURCE OF CONSTRUCTION MATERIAL:

If possible construction material will be obtained from the excavation of drill site, if additional material is needed it will be obtained from a local source and transported over the access roads as shown on Exhibit "C".

7. METHODS OF HANDLING WASTE MATERIAL:

- A. Drill cuttings will be disposed of in the reserve pits.
- B. All trash, junk and other waste material will be contained in trash cages or trash bins to prevent scattering. When the job is completed all contents will be removed and disposed of in a approved sanitary land fill.
- C. Salts remaining after completion of well will be picked up by the supplier, including broken sacks.
- D. Waste water from living quarters will be drained into holes with a minimum of 10'. These holes will be covered during drilling and will be back filled when the well is completed. A Porto-John will be provided for the rig crews. This equipment will be properly maintained during the drilling and completion operations and will be removed when all operations are complete.
- E. Remaining drilling fluids will be allowed to evaporate in the reserve pits until the pits are dry enough to be broken out for further drying. If the drilling fluids do not evaporate in a reasonable time they will be hauled off by transports to a state approve disposal site. Later pits will be broken out to speed drying. Water produced during completion will be put in reserve pits. Oil and condensate produced will be put in storage tanks and sold.

8. ANCILLARY FACILITIES:

- A. No camps or air strips will be constructed on location.

SURFACE USE PLAN

CONCHO OIL & GAS CORP.  
CROW FLATS "14" FEDERAL # 1  
UNIT "F" SECTION 14  
T16S-R28E EDDY CO. NM

11. OTHER INFORMATION:

- A. Topography consists of sand dunes with a slight dip to the West. Deep sandy soil supports shinnery oak, native grasses, and an occasional mesquite tree.
- B. Surface is owned by the U.S. Government and is administered by the Bureau of Land Management. The surface is used for grazing livestock and the production of oil and gas.
- C. An archaeological survey will be conducted on the location and access roads. This report will be filed with The Bureau of Land Management in the Carlsbad field office.
- D. There are no dwellings in the near vicinity of this location.

12. OPERATORS REPRESENTIVES:

Before construction:

TIERRA EXPLORATION, INC  
P.O. BOX 2188  
HOBBS, NEW MEXICO 88241  
OFFICE Ph. 505-391-8503  
JOE T. JANICA

During and after construction:

CONCHO OIL & GAS CORP.  
110 WEST LOUISIANA  
SUITE 410  
MIDLAND, TEXAS 79701  
ERICK NELSON 915-683-7443

13. CERTIFICATION: I hereby certify that I, or persons under my direct supervision have inspected the proposed drill site and access roads, and that I am familiar with the conditions which currently exist, that the statements made in this plan are to the best of my knowledge true and correct, and that the work associated with the operations proposed herein will be performed by CONCHO OIL & GAS CORP. it's contractors/subcontractors is in compformity with this plan and the terms and conditions under which it is approved. This statement is subject to the provision of U.S.C. 1001 for the filing of a false report.

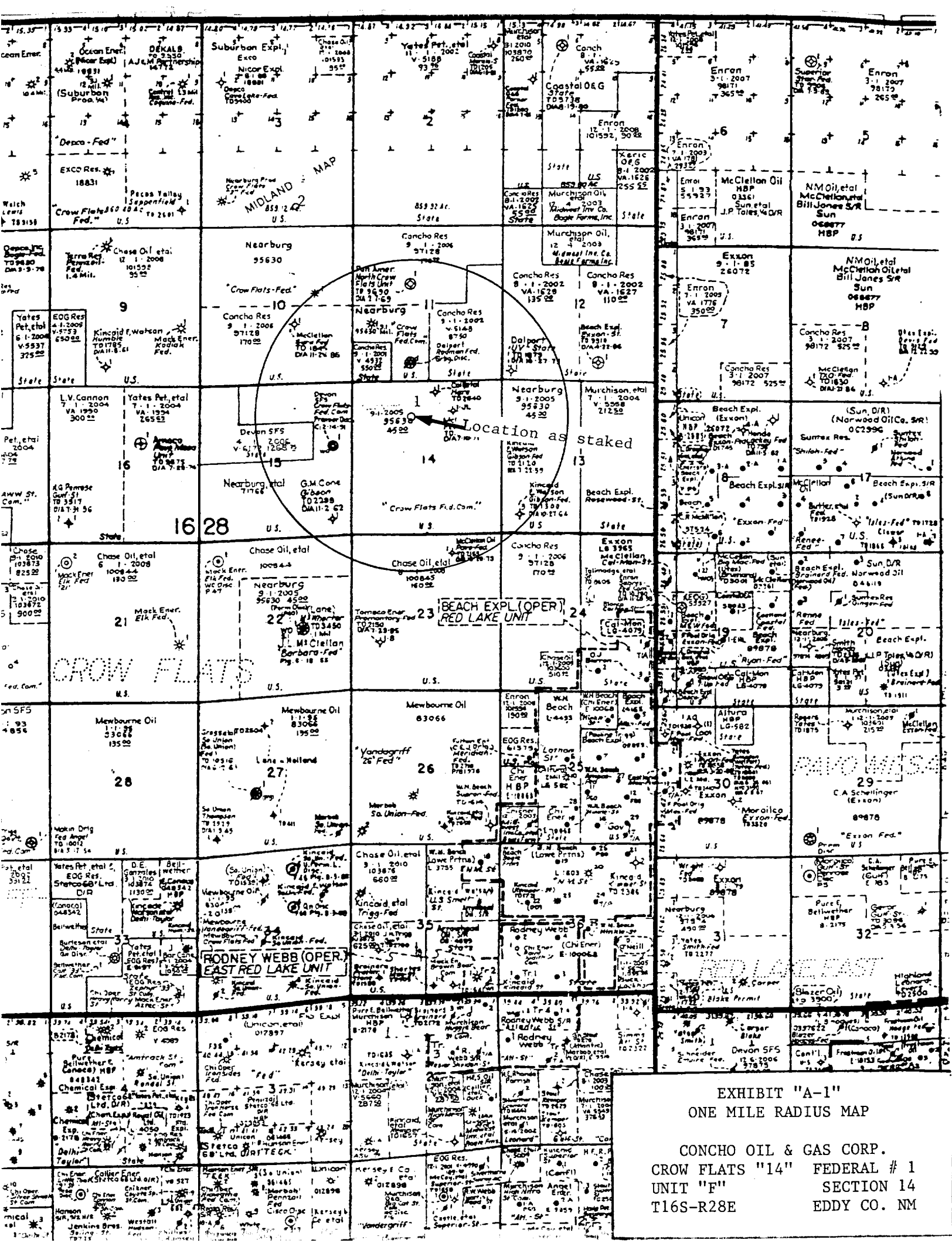
NAME :

DATE :

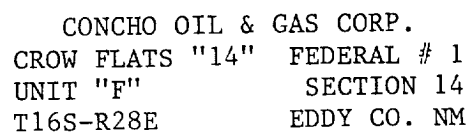
TITLE :

06/20/02

Agent

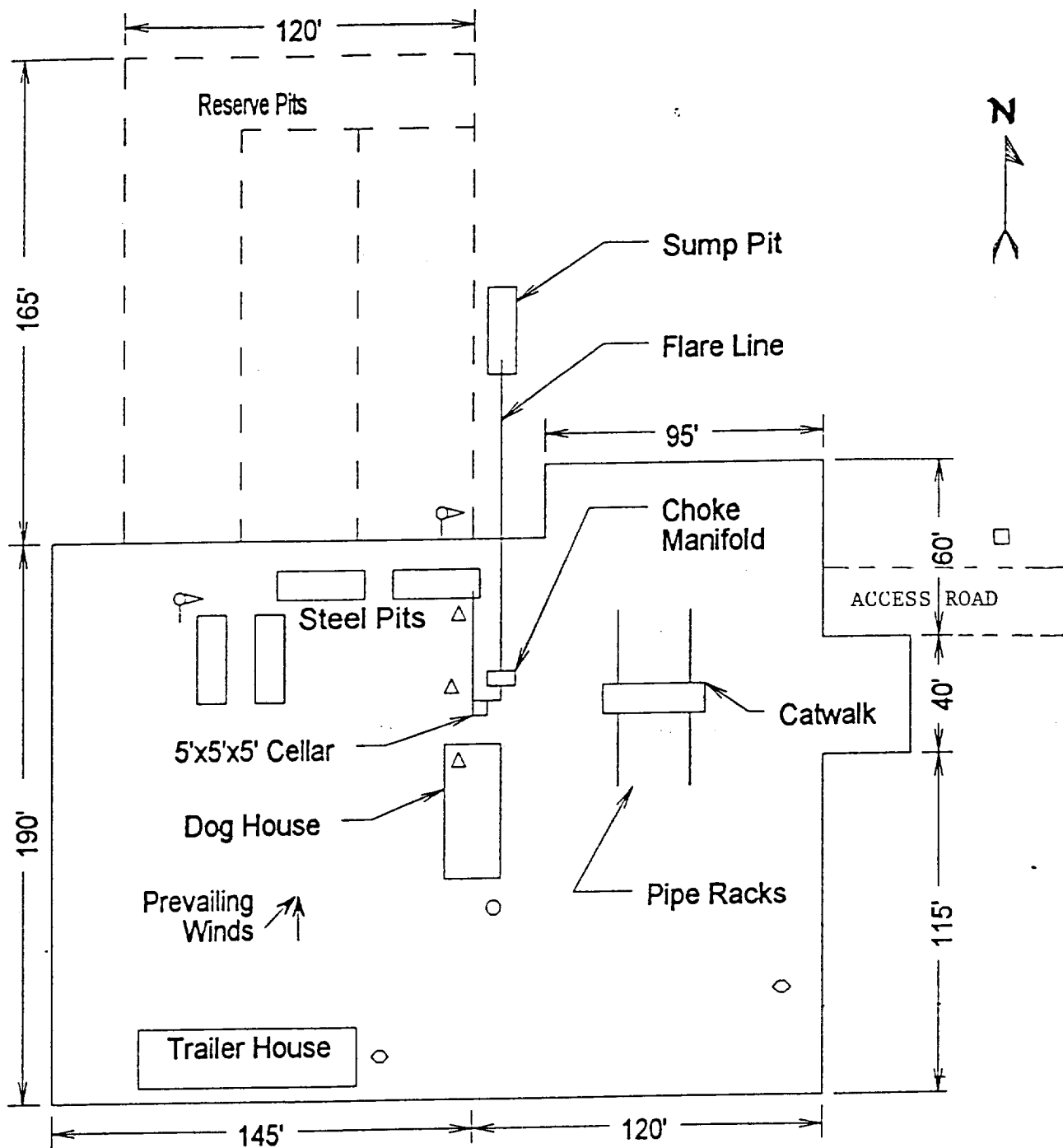


11. 2000





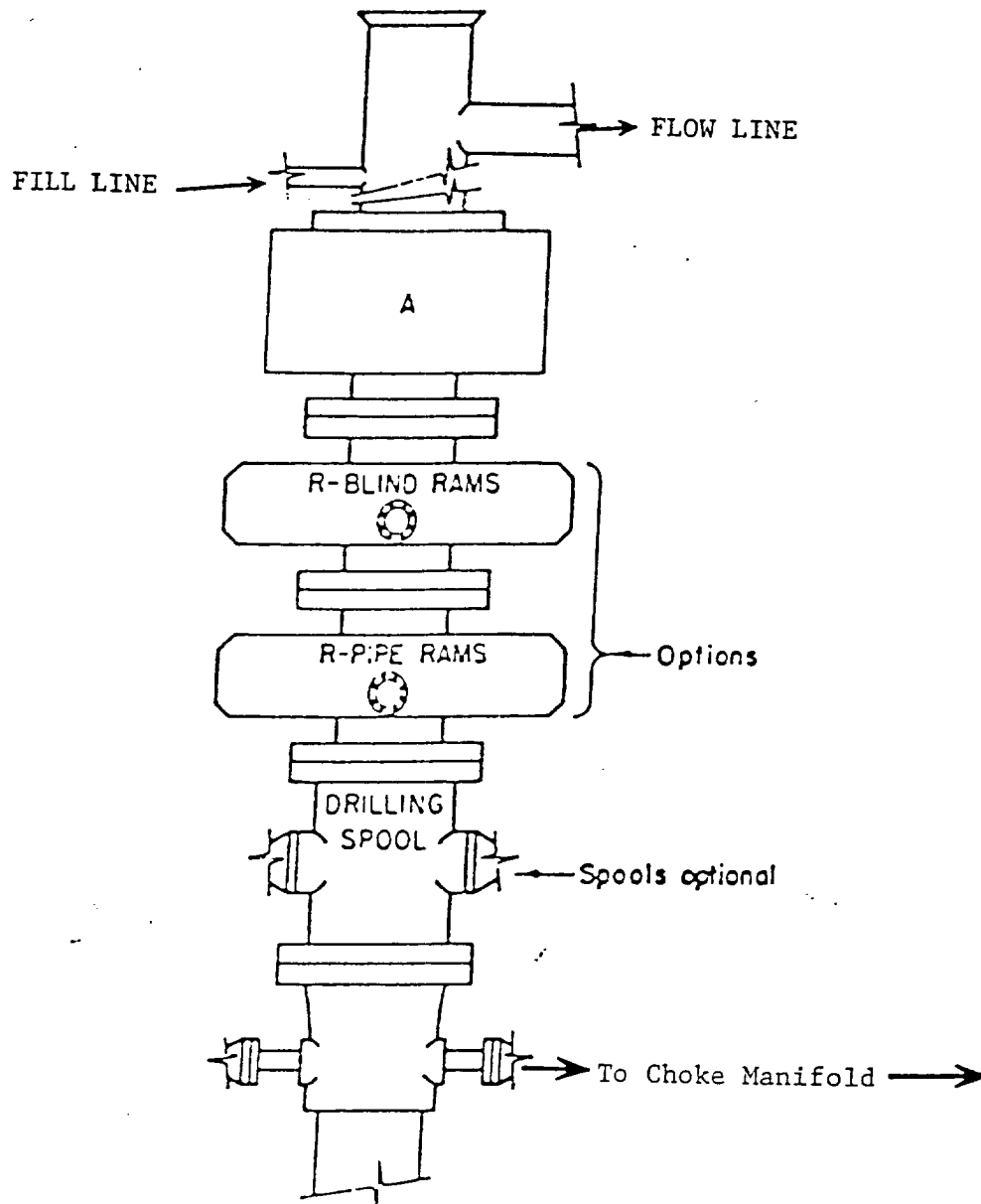




- ⚓ Wind Direction Indicators  
(wind sock or streamers)
- △ H2S Monitors  
(alarms at bell nipple and shale shaker)
- ◇ Briefing Areas
- Remote BOP Closing Unit
- Sign and Condition Flags

EXHIBIT "D"  
RIG LAY OUT PLAT

CONCHO OIL & GAS CORP.  
CROW FLATS "14" FEDERAL # 1  
UNIT "F" SECTION 14  
T16S-R28E EDDY CO. NM



# **ARRANGEMENT SRRA**

900 Series  
3000 PSI WP

EXHIBIT "E"  
SKETCH OF B.O.P. TO BE USED ON

CONCHO OIL & GAS CORP.  
CROW FLATS "14" FEDERAL # 1  
UNIT "F" SECTION 14  
T16S-R28E EDDY CO. NM

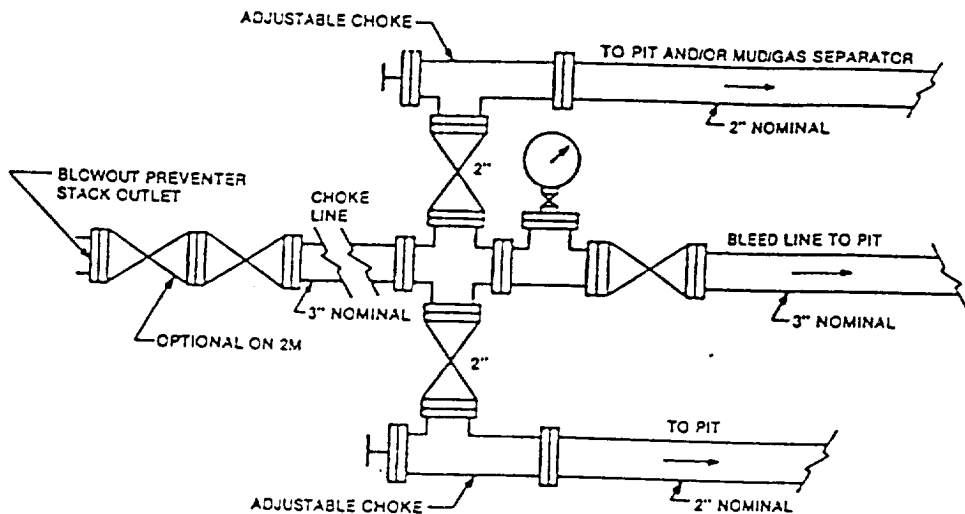


FIGURE K4-1. Typical choke manifold assembly for 2M and 3M rated working pressure service — surface installation.

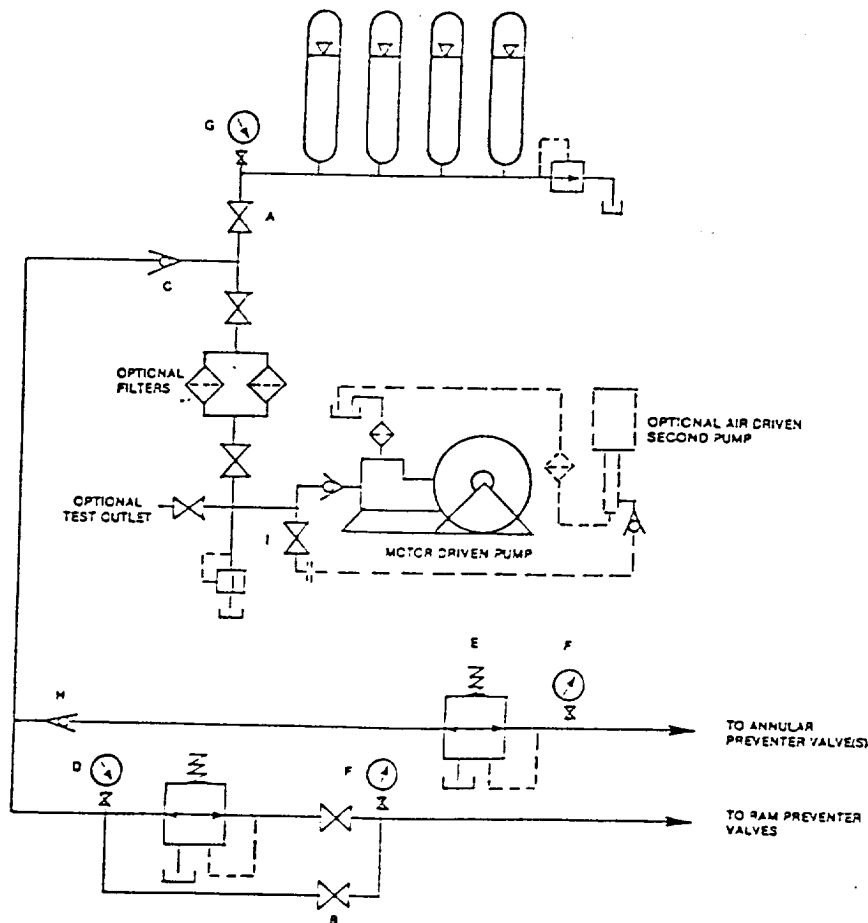
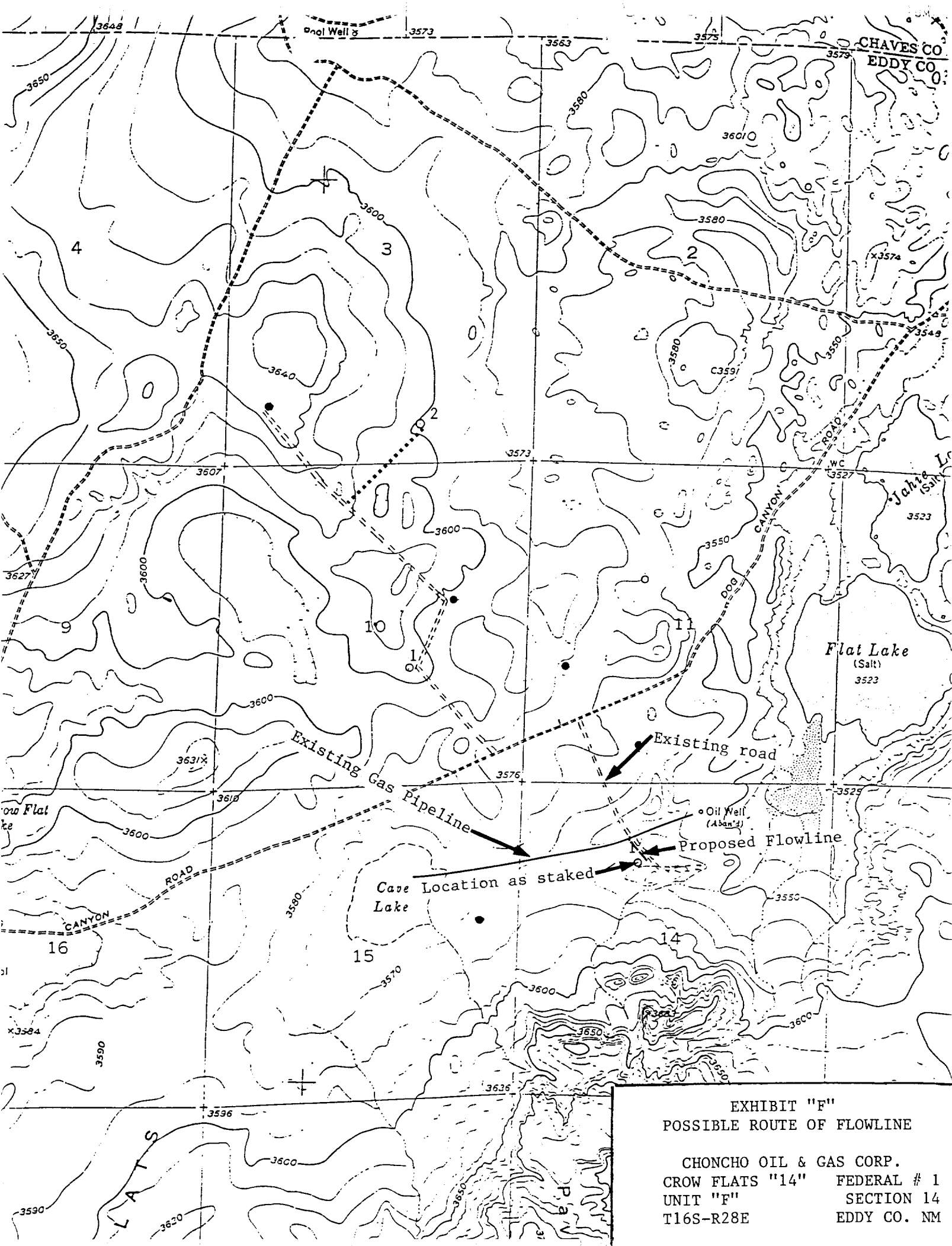


FIGURE K6-1. The schematic sketch of an accumulator system shows required and optional components.

EXHIBIT "E-1"  
CHOKE MANIFOLD & CLOSING UNIT

CONCHO OIL & GAS CORP.  
CROW FLATS "14" FEDERAL # 1  
UNIT "F" SECTION 14  
T16S-R28E EDDY CO. NM



UNITED STATES DEPARTMENT OF THE INTERIOR  
Bureau of Land Management  
Roswell Field Office  
2909 West Second Street  
Roswell, New Mexico 88201-1287

Statement Accepting Responsibility for Operations

Operator Name : CONCHO OIL & GAS CORP.  
Street or Box : 110 W. LOUISIANA, SUITE 410  
City, State : MIDLAND, TEXAS  
Zip Code : 79701

The undersigned accepts all applicable terms, conditions, stipulations, and restrictions concerning operations conducted on the leased land or portion thereof, as described below:

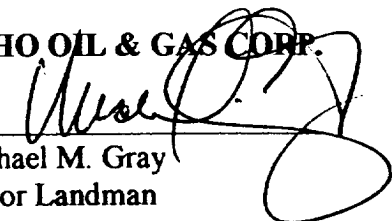
Lease No.: NM-95630

Legal Description of Land: All of Section 14,  
Township 16 South, Range 28 East, NMPM  
Eddy County, New Mexico

Formation(s) (if applicable): Not applicable

Bond Coverage (State if individually bonded or another's bond): INDIVIDUALLY

BLM Bond File No.: NM 2611

CONCHO OIL & GAS CORP.  
Authorized Signature:   
Title: Michael M. Gray  
Senior Landman

Date: July 15, 2002