

District I  
1625 N. French Dr., Hobbs, NM 88240  
District II  
1301 W. Grand Avenue, Artesia, NM 88210  
District III  
1000 Rio Brazos Road, Aztec, NM 87410  
District IV  
1220 S. St. Francis Dr., Santa Fe, NM 87505

State of New Mexico  
Energy Minerals and Natural Resources

Form C-101  
Revised March 17, 1999

Submit to appropriate District Office  
State Lease - 6 Copies  
Fee Lease - 5 Copies

☐ AMENDED REPORT

APPLICATION FOR PERMIT TO DRILL, RE-ENTER, DEEPEN, PLUGBACK, OR ADD A ZONE

<sup>1</sup> Operator Name and Address MURCHISON OIL & GAS, INC. 1100 MIRA VISTA BLVD. PLANO, TX. 75093-4698		<sup>2</sup> OGRID Number 015363
		<sup>3</sup> API Number 30-015-32535
<sup>4</sup> Property Code 30819	<sup>5</sup> Property Name POLAR BEAR STATE COM	<sup>6</sup> Well No. 1

<sup>7</sup> Surface Location

UL or lot no.	Section	Township	Range	Lot Idn	Feet from the	North/South line	Feet from the	East/West line	County
E	1	17S	28E		1980	NORTH	1270	WEST	EDDY

<sup>8</sup> Proposed Bottom Hole Location If Different From Surface

UL or lot no.	Section	Township	Range	Lot Idn	Feet from the	North/South line	Feet from the	East/West line	County

<sup>9</sup> Proposed Pool 1 EMPIRE MORROW SOUTH	<sup>10</sup> Proposed Pool 2
---	-------------------------------

<sup>11</sup> Work Type Code N	<sup>12</sup> Well Type Code G	<sup>13</sup> Cable/Rotary ROTARY	<sup>14</sup> Lease Type Code S	<sup>15</sup> Ground Level Elevation 3609
<sup>16</sup> Multiple N	<sup>17</sup> Proposed Depth 10500	<sup>18</sup> Formation MORROW	<sup>19</sup> Contractor PATTERSON	<sup>20</sup> Spud Date 12/1/02

<sup>21</sup> Proposed Casing and Cement Program

Hole Size	Casing Size	Casing weight/foot	Setting Depth	Sacks of Cement	Estimated TOC
17-1/2"	13-3/8"	61 #/FT	200'	355	SURFACE
12-1/4"	9-5/8"	47 #/FT	2450'	900	SURFACE
8-3/4"	5-1/2"	17 #/FT	10500'	1500	5600

<sup>22</sup> Describe the proposed program. If this application is to DEEPEN or PLUG BACK, give the data on the present productive zone and proposed new productive zone.  
Describe the blowout prevention program, if any. Use additional sheets if necessary.

DRILL, CASE AND COMPLETE WELL IN MORROW FORMATION

BOP'S INCLUDE: 1) HYDRILL DOUBLE RAM 11" x 3000 PSI

2) CHOKE MANIFOLD 4" x 5000 PSI FLANGED CONNECTION

3) SIX STATION ACCUMULATOR CLOSING UNIT w/ REMOTE CONTROL

<sup>23</sup> I hereby certify that the information given above is true and complete to the best of my knowledge and belief. Signature: <i>Michael S. Daugherty</i>		OIL CONSERVATION DIVISION	
Printed name: MICHAEL S. DAUGHERTY		Approved by: <b>ORIGINAL SIGNED BY TIM W. GUM</b> <b>DISTRICT II SUPERVISOR</b>	
Title: VICE PRESIDENT OPERATIONS		Approval Date: <b>NOV 19 2002</b>	Expiration Date: <b>NOV 19 2003</b>
Date: 11/15/02	Phone: (972) 931-0700	Conditions of Approval: Attached <input type="checkbox"/>	

District I  
1625 N. French Dr. Hobbs, NM 88240

District II  
811 South First, Artesia, NM 88210

District III  
1000 Rio Brazos Rd., Aztec NM 87410

District IV  
2040 South Pacheco, Santa Fe, NM 87505

State of New Mexico  
Energy, Minerals & Natural Resources

OIL CONSERVATION DIVISION

2040 South Pacheco  
Santa Fe, N M 87505

Form C-102

Revised March 17, 1999

Submit to Appropriate District Office

State Lease - 4 Copies

Fee Lease - 3 Copies

☐ AMENDED REPORT

WELL LOCATION AND ACREAGE DEDICATION PLAT

API Number	Pool Code 76400	Pool Name EMPIRE MORROW SOUTH
Property Code	Property Name POLAR BEAR STATE COM	Well Number 1
OGRID No. 015363	Operation Name MURCHISON OIL & GAS, INC.	Elevation 3609

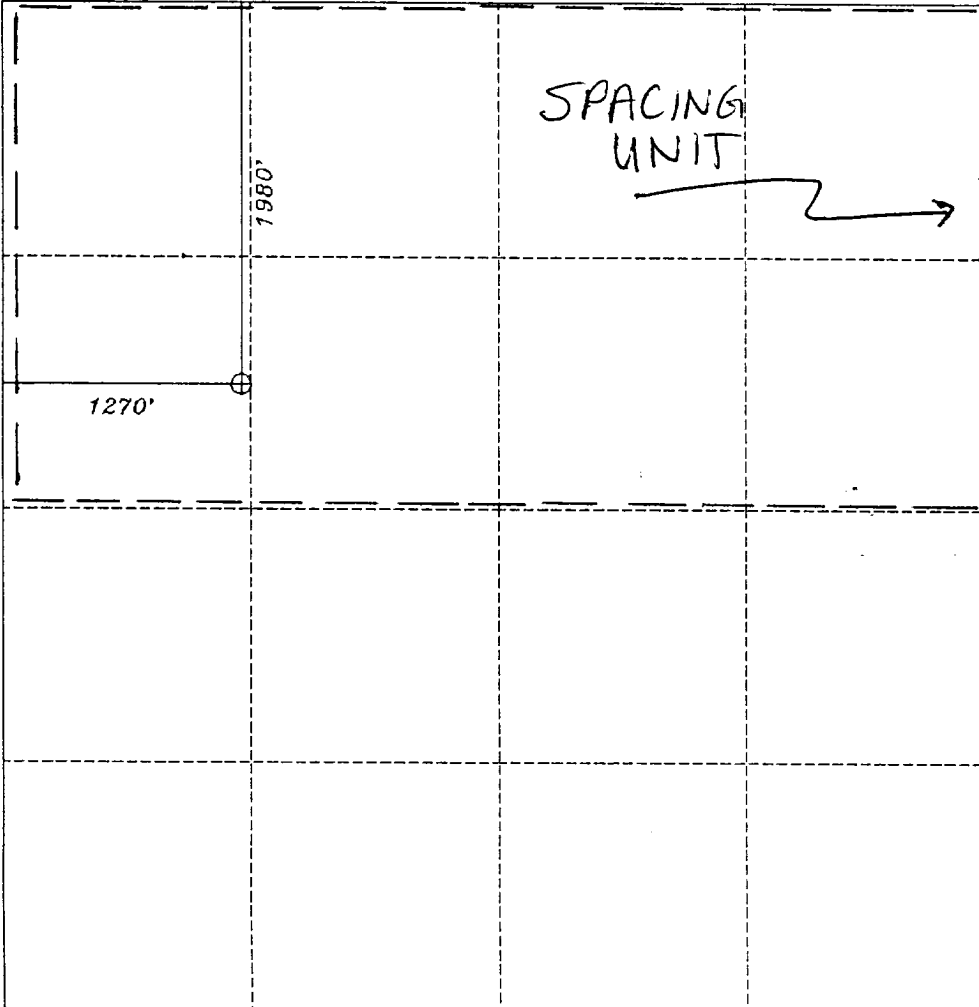
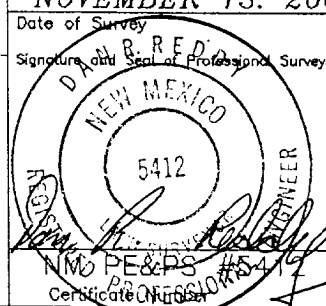
Surface Location

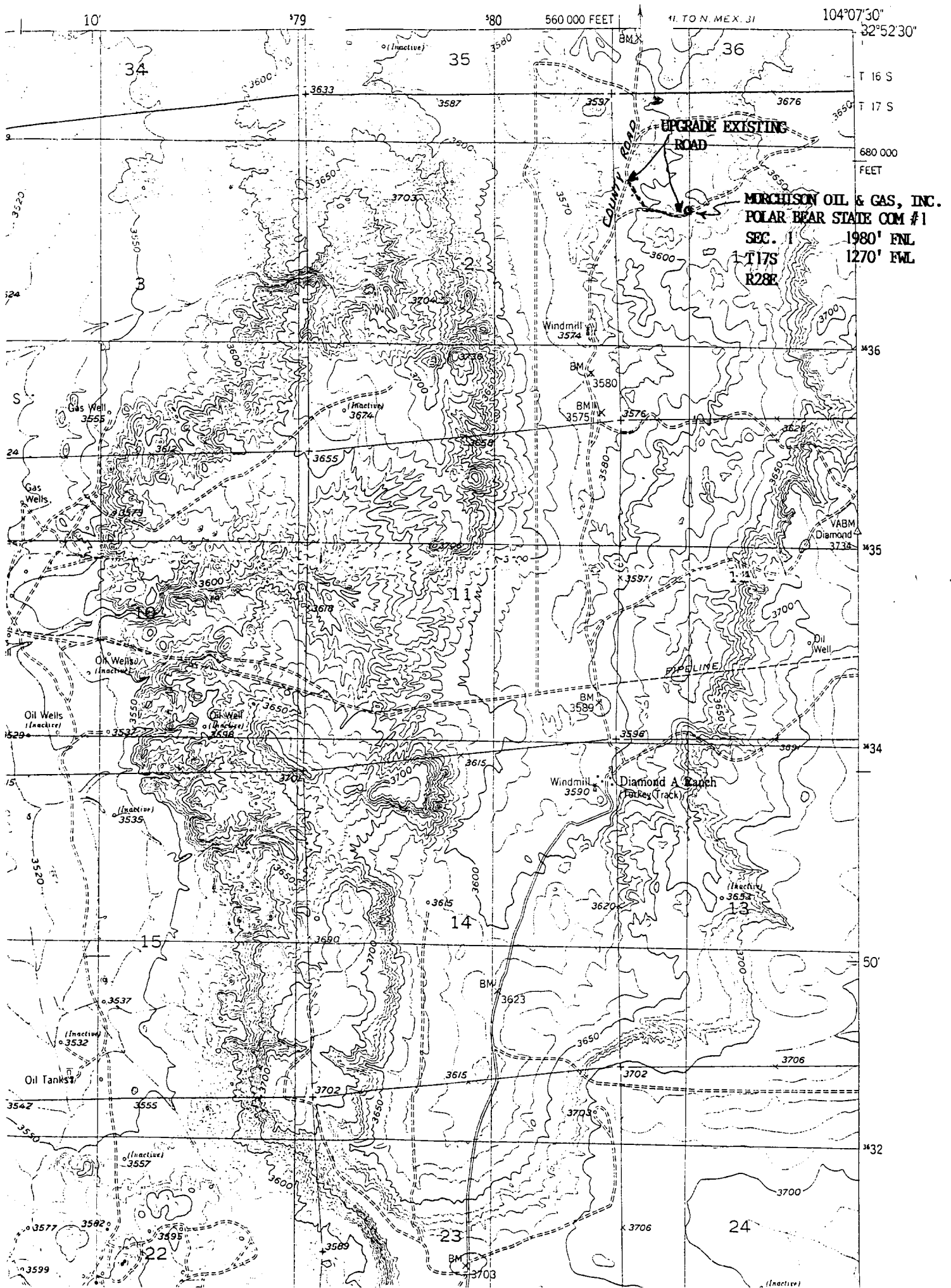
UL or Lot No. E	Section 1	Township 17-S	Range 28-E	Lot Idn.	Feet from the 1980	North/South line NORTH	Feet from the 1270	East/West line WEST	County EDDY
--------------------	--------------	------------------	---------------	----------	-----------------------	---------------------------	-----------------------	------------------------	----------------

Bottom Hole Location If Different From Surface

UL or Lot No.	Section	Township	Range	Lot Idn.	Feet from the	North/South line	Feet from the	East/West line	County
Dedicated Acres 320	Joint or Infill	Consolidation Code	Order No.						

NO ALLOWABLE WILL BE ASSIGNED TO THIS COMPLETION UNTIL ALL INTEREST HAVE BEEN CONSOLIDATED OR A NON-STANDARD UNIT HAS BEEN APPROVED BY THE DIVISION

	<b>OPERATOR CERTIFICATION</b> I HEREBY CERTIFY THAT THE INFORMATION HEREIN IS TRUE AND CORRECT TO THE BEST OF MY KNOWLEDGE AND BELIEF.  Signature <i>Michael S. Daugherty</i> Printed Name MICHAEL S. DAUGHERTY Title V P OPERATIONS Date 11/15/02
	<b>SURVEYOR CERTIFICATION</b> I HEREBY CERTIFY THAT THE WELL LOCATION SHOWN ON THIS PLAT WAS PLOTTED FROM FIELD NOTES OF ACTUAL SURVEYS MADE BY ME OR UNDER MY SUPERVISION, AND THAT THE SAME IS TRUE AND CORRECT TO THE BEST OF MY KNOWLEDGE AND BELIEF.  NOVEMBER 13, 2002 Date of Survey Signature and Seal of Professional Surveyor  Certificate Number



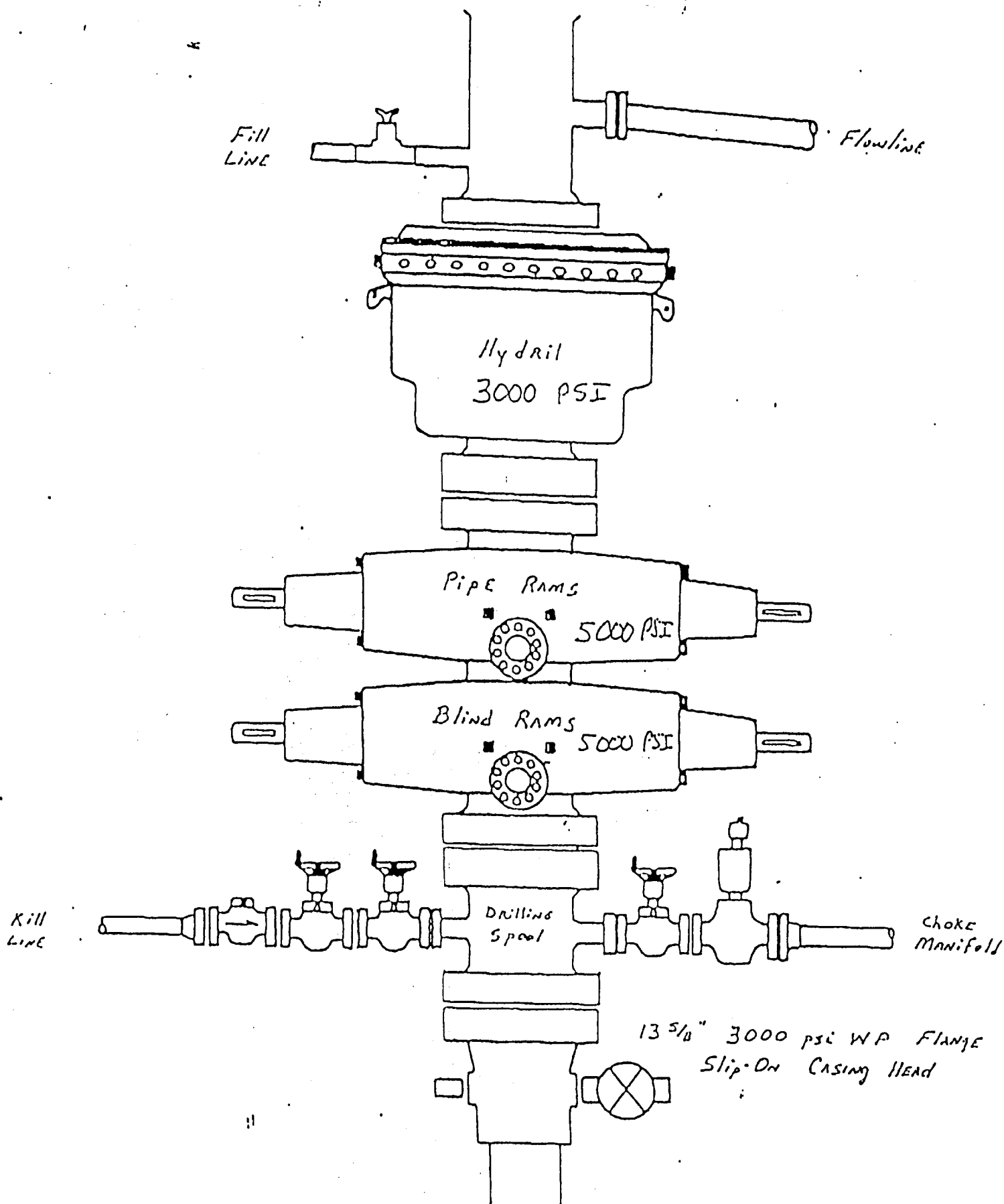
**MURCHISON OIL & GAS, INC.**

**POLAR BEAR STATE COM #1  
SEC. 1, T17S, R28E  
1980' FNL & 1270' FWL  
EDDY CO., NM.**

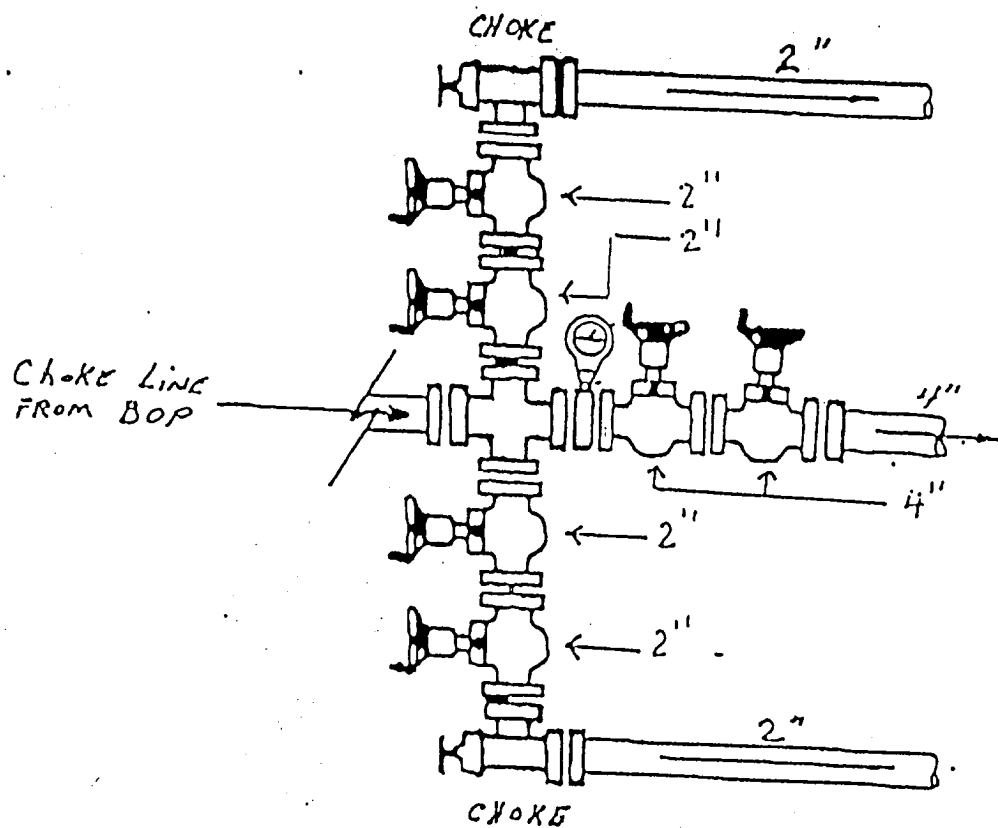
**MUD PROGRAM**

<b><u>DEPTH</u></b>	<b><u>WEIGHT</u></b>	<b><u>VISCOSITY</u></b>	<b><u>FILTRATE</u></b>
0' – 200'	8.4	32 – 36	NO CONTROL
200' – 2,450'	8.4 – 10.0	28 – 29	NO CONTROL
2,450' – 7,000'	8.4	28 – 29	NO CONTROL
7,000' – 9,900'	8.6 – 8.8	28 – 29	25 WL
9,900' – 10,500'	8.9 – 9.4	38 – 48	6 – 8 WL

PH to be maintained above 10



POLAR BEAR STATE COM #1  
1980' FNL & 1270' FWL  
SEC. 1, T17S, R28E  
EDDY CO., NM.



POLAR BEAR STATE COM #1  
 1980' FNL & 1270' FWL  
 SEC. 1, T17S, R28E  
 EDDY CO., NM.