

NEW MEXICO OIL CONSERVATION COMMISSION
Santa Fe, New Mexico

Form C-101
Revised (12/1/55)

NOTICE OF INTENTION TO DRILL

Notice must be given to the District Office of the Oil Conservation Commission and approval obtained before drilling or recompletion begins. If changes in the proposed plan are considered advisable, a copy of this notice showing such changes will be returned to the sender. Submit this notice in QUINTUPPLICATE. One copy will be returned following approval. See additional instructions in Rules and Regulations of the Commission. If State Land submit 6 Copies Attach Form C- 128 in triplicate to first 3 copies of form C-101

Hobbs, New Mexico

(Place)

February 25, 1957

(Date)

OIL CONSERVATION COMMISSION
SANTA FE, NEW MEXICO

30-015-00993

Gentlemen:

You are hereby notified that it is our intention to commence the Drilling of a well to be known as

John M. Kelly

(Company or Operator)

Elk State "A"

(Lease)

Well No. 2

in 8

(Unit)

The well is

located 2310 feet from the North line and 2310 feet from the

East

line of Section 5, T. 17, R. 29, NMPM.

(GIVE LOCATION FROM SECTION LINE)

Cave

Pool,

Fddy

County

If State Land the Oil and Gas Lease is No. E-10163

If patented land the owner is

Address

We propose to drill well with drilling equipment as follows: Cable Tools to
depth of 2400'

The status of plugging bond is Blanket Bond on file.

Drilling Contractor Lonnelly Drilling Company
Artesia, New Mexico

We intend to complete this well in the Grayburg
formation at an approximate depth of 2400 feet.

CASING PROGRAM

We propose to use the following strings of Casing and to cement them as indicated:

Size of Hole	Size of Casing	Weight per Foot	New or Second Hand	Depth	Sacks Cement
10 1/2	8 5/8	24	New	250	100
6	5 1/2	15 1/2	New	2350	200

If changes in the above plans become advisable we will notify you immediately.

ADDITIONAL INFORMATION (If recompletion give full details of proposed plan of work.)

Sincerely yours,

John M. Kelly

(Company or Operator)

By

Position: Production Superintendent
Send Communications regarding well to

Name: John M. Kelly

Address: Box 5671, Roswell, New Mexico

Approved: 19

Except as follows:

OIL CONSERVATION COMMISSION

By

M L Armstrong

OIL CONSERVATION COMMISSION
ARTESIA DISTRICT OFFICE

No. Copies Received

DISTRIBUTION

	NO. FURNISHED	
Operator		
Santa Fe		
Proration Office		
State Land Office		
U. S. G. S.		
Transporter		
File		

NEW MEXICO
OIL CONSERVATION COMMISSION

Form C-128

Well Location and/or Gas Proration Plat

Date 1/6/57

Operator JOHN M. KELLY Lease Elk State "A"

Well No. 2 Section 5 Township 17 S. Range 29 E. NMPM

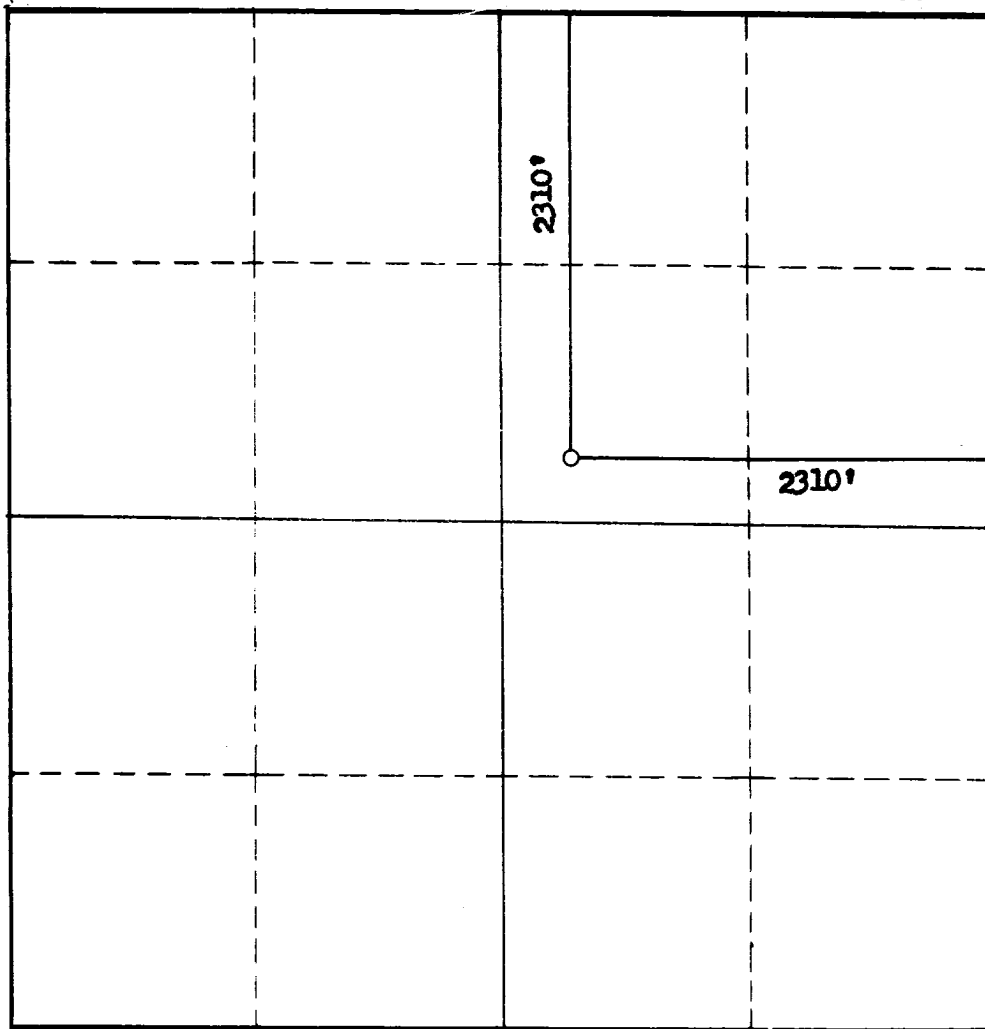
Located 2310 Feet From North Line, 2310 Feet From East Line,

Eddy

County, New Mexico. G. L. Elevation 3640

Name of Producing Formation Grayburg Pool Cave Dedicated Acreage 40

(Note: All distances must be from outer boundaries of Section)



SCALE: 1"=1000'

1. Is this Well a Dual Comp. ? Yes ___ No x.
2. If the answer to Question 1 is yes, are there any other dually completed wells within the dedicated acreage? Yes ___ No ___.

This is to certify that the above plat was prepared from field notes of actual surveys made by me or under my supervision and that the same are true and correct to the best of my knowledge and belief.

Name _____
Position _____
Representing _____
Address _____

Date Surveyed 1/6/57
George H. Hinchfield
Registered Professional Engineer and/or
Land Surveyor

OIL CONSERVATION COMMISSION
ARTESIA DISTRICT OFFICE
No. Copies Received 2

DISTRIBUTION

	NO. FURNISHED	
Operator	<u>1</u>	
Santa Fe	<u>1</u>	
Production Office		
State Land Office		