

NOTICE OF INTENTION TO DRILL

Notice must be given to the District Office of the Oil Conservation Commission and approval obtained before drilling or recompletion begins. If changes in the proposed plan are considered advisable, a copy of this notice showing such changes will be returned to the sender. Submit this notice in QUINTUPLICATE. One copy will be returned following approval. See additional instructions in Rules and Regulations of the Commission. If State Land submit 6 Copies Attach Form G-128 in triplicate to first 3 copies of form G-101

Hobbs, New Mexico

May 22, 1958

(Place)

(Date)

OIL CONSERVATION COMMISSION
SANTA FE, NEW MEXICO

Gentlemen:

You are hereby notified that it is our intention to commence the Drilling of a well to be known as

John M. Kelly

(Company or Operator)

Gulf Elk

(Lease)

Well No. 5, in J The well is

(Unit)

located 2310 feet from the South line and 2310 feet from the

East

line of Section 4, T. 17S, R. 29E, NMPM.

(GIVE LOCATION FROM SECTION LINE)

Cave Underlay Pool, Eddy County

If State Land the Oil and Gas Lease is No. B-11662

If patented land the owner is

Address

We propose to drill well with drilling equipment as follows: Cable Tools

from surface to 2450'

The status of plugging bond is Blanket Bond on file

Drilling Contractor Donnelly Drilling Company

Artesia, New Mexico

We intend to complete this well in the Grayburg

formation at an approximate depth of 2400 feet.

CASING PROGRAM

We propose to use the following strings of Casing and to cement them as indicated:

Size of Hole	Size of Casing	Weight per Foot	New or Second Hand	Depth	Sacks Cement
11	8 5/8	24	New	300	100
6	4 1/2	9.5	New	2450	200

If changes in the above plans become advisable we will notify you immediately.

ADDITIONAL INFORMATION (If recompletion give full details of proposed plan of work.)

MAY 23 1958

Approved _____, 19_____
Except as follows:

OIL CONSERVATION COMMISSION

By M. L. Armstrong

Sincerely yours,

John M. Kelly

(Company or Operator)

By Burnett D. McLean

Position Production Superintendent

Send Communications regarding well to

Name John M. Kelly

Address Box 5671, Roswell, New Mexico

OIL CONSERVATION COMMISSION
ARTESIA DISTRICT OFFICE

No. Copies Received

DISTRIBUTION

Operator	
Santa Fe	
Extraction Co.	
State Land Office	
U.S.G.	
Trinidad	

NEW MEXICO OIL CONSERVATION COMMISSION
Well Location and Acreage Dedication Plat

Section A.

Date May 22, 1958

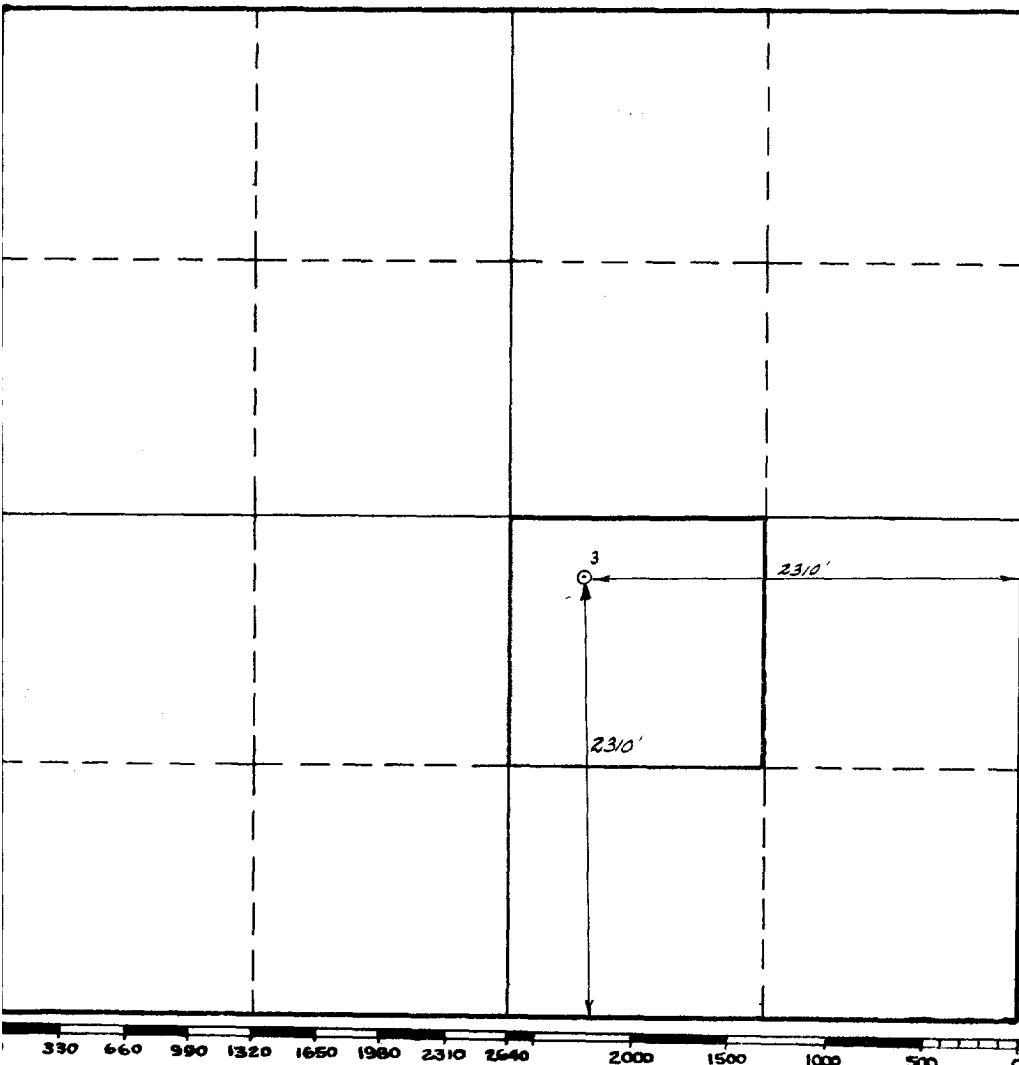
Operator John M. Kelly Lease Gulf Elk
Well No. 3 Unit Letter J Section 4 Township 17S Range 29E NMFM
Located 2310 Feet From South Line, 2310 Feet From East Line
County Eddy G. L. Elevation 3600 Dedicated Acreage 40 Acres
Name of Producing Formation Grayburg Pool Cave

1. Is the Operator the only owner* in the dedicated acreage outlined on the plat below?
Yes ☒ No ☐.
2. If the answer to question one is "no," have the interests of all the owners been consolidated by communitization agreement or otherwise? Yes ☐ No ☐. If answer is "yes," Type of Consolidation _____
3. If the answer to question two is "no," list all the owners and their respective interests below:

Owner

Land Description

Section B



This is to certify that the information in Section A above is true and complete to the best of my knowledge and belief.

John M. Kelly

(Operator)

Guinness D. McKelvey
(Representative)

204 Llano Drive, Hobbs,
Address N. M.

This is to certify that the well location shown on the plat in Section B was plotted from field notes of actual surveys made by me or under my supervision and that the same is true and correct to the best of my knowledge and belief.

Date Surveyed 7/20/58

George A. Hinchfield
Registered Professional
Engineer and/or Land Surveyor.

Certificate No. 1528

(See instructions for completing this form on the reverse side)

INSTRUCTIONS FOR COMPLETION:

1. Operator shall furnish and certify to the information called for in Section A.
2. Operator shall outline the dedicated acreage for both oil and gas wells on the plat in Section B.
3. A registered professional engineer or land surveyor registered in the State of New Mexico or approved by the Commission shall show on the plat the location of the well and certify this information in the space provided.
4. All distances shown on the plat must be from the outer boundaries of Section.
5. If additional space is needed for listing owners and their respective interests as required in question 3, Section A, please use space below

OIL CONSERVATION COMMISSION	
ARTESIA DISTRICT OFFICE	
No. Copies Received <u>6</u>	
DISTRIBUTION	
	COPIES FURNISHED
Operator	<u>1</u>
Santa Fe	<u>1</u>
Proration Office	<u>1</u>
State Land Office	<u>1</u>
U. S. G. O.	<u>2</u>
Inspection	<u>1</u>

* "Owner" means the person who has the right to drill into and to produce from any pool and to appropriate the production either for himself or for himself and another. (65-3-29 (e) NMSA 1953 Comp.)