

+Submit 3 Copies
to Appropriate
District Office

State of New Mexico
Energy, Minerals and Natural Resources Department

Form C 103
Revised 1-1-89

DISTRICT I
P.O. Box 1980, Hobbs, NM 88240

OIL CONSERVATION DIVISION
P.O. Box 2088
Santa Fe, New Mexico 87504-2088

P.O. Drawer DD, Artesia, NM 88210

DISTRICT III
1000 Rio Brazos Rd., Aztec, NM 87410

WELL API NO.
30-015-02908

5. Indicate Type of Lease
STATE ☒ FEE ☐

6. State Oil & Gas Lease No.

7. Lease Name or Unit Agreement Name
State U-5

8. Well No.
3

9. Pool name or Wildcat
Grayburg

10. Elevation (Show whether DF, RKB, RT, GR, etc.)

SUNDRY NOTICES AND REPORTS ON WELLS
(DO NOT USE THIS FORM FOR PROPOSALS TO DRILL OR TO DEEPEN OR PLUG BACK TO A
DIFFERENT RESERVOIR. USE APPLICATION FOR PERMIT
(FORM C-101) FOR SUCH PROPOSALS.)

1. Type of Well:
Oil Well ☒ Gas Well ☐ OTHER

2. Name of Operator
Conoco Inc.

3. Address of Operator
10 Desta Dr. Ste 100W, Midland, Tx 79705-4500

4. Well Location
Unit Letter E 1980 Feet From The North Line and 660 Feet From The West Line
Section 5 Township 17S Range 29E NMPM Eddy County

11. Check Appropriate Box to Indicate Nature of Notice, Report, or Other Data

NOTICE OF INTENTION TO:	SUBSEQUENT REPORT OF:
PERFORM REMEDIAL WORK <input type="checkbox"/>	REMEDIAL WORK <input type="checkbox"/>
TEMPORARILY ABANDON <input type="checkbox"/>	ALTERING CASING <input type="checkbox"/>
PULL OR ALTER CASING <input type="checkbox"/>	COMMENCE DRILLING OPNS. <input type="checkbox"/>
OTHER: <input type="checkbox"/>	PLUG AND ABANDONMENT <input type="checkbox"/>
	CASING TEST AND CEMENT JOB <input type="checkbox"/>
	OTHER: <input type="checkbox"/>

12. Describe Proposed or Completed Operations (Clearly state all pertinent details, and give pertinent dates, including estimated date of starting any proposed work) SEE RULE 1103.

The subject well was originally plugged and abandoned in July, 1957. Upon a recent inspection, it was reported that oil was leaking at the surface. The well will be re-plugged, per the attached procedure.

Notify OCD 24 hrs. prior to any work done

This well must be re-plugged on or
before 15 April. 32002



12 I hereby certify that the information is true and correct.

SIGNATURE Reesa R. Wilkes TITLE Regulatory Specialist DATE 1/7/02

TYPE OR PRINT NAME Reesa R. Wilkes TELEPHONE NO. 915/686-5580

(this space for State Use)

APPROVED BY [Signature] TITLE Field Rep ID DATE 1-11-02

CONDITIONS OF APPROVAL, IF ANY

Distribution: OCD (3), SHEAR, PONCA, COST ASST, FIELD, WELL FILE

Proposed re-entry/plugging procedure

Conoco Inc. - State U-5 #3

API #42-015-02908; 1980 FNL & 660 FWL, Unit Letter E, Section 5, T-17-S, R-29-E

Eddy County, New Mexico

History: Well was originally drilled in April of 1957 to 2,440' and completed in Grayburg with perforations 2,380 – 2,388'. In July of 1957, the well was plugged per attached wellbore diagram as a dry hole. NMOCD inspection October 31, 2001 indicates a possible oil leak at surface.

Surface casing: 7-5/8" 26.4# set @ 715' cemented w/ 360 sx, circulated to surface.

Production casing: 4½" 9.5# csg set @ 2,439' cemented w/ 75 sx, TOC 1,925' by T.S., cut and pulled +/- 1900' 4½" casing during P&A in 1957.

Existing Plugs: 2,437 – 2,337'; 1,550 – 1,450'; 765 – 665'; 25' to surface

Formation Tops:	Salado	350'
	Yates	840'
	Seven Rivers	1,074'
	Queen	1,632'

Notify New Mexico OCD, Van Barton, at 505-748-1283. Move in backhoe and dig out dry hole marker to casings to determine source of oil-soaked soil at surface around dryhole marker. If source of oil is not the wellbore, re-mediate contaminated soil without entering wellbore or removing dryhole marker. If wellbore appears to be leaking, re-enter wellbore as follows:

1. Dig out cellar to 7-5/8" surface casing. Remove dryhole marker. Implement confined space and excavation procedures if dug out more than three feet below ground level. Set 200 bbl steel working pit.
2. Following hotwork safety procedures, verify safe hotwork environment and weld on 7-5/8" riser to ground level and weld on wellhead flange.
3. Set rig anchors and test per AESC guidelines.
4. Set steel rig mat and 2,500' 2-3/8" workstring. MIRU pulling unit and reverse unit. NU 6" 3,000# manual BOP. Test BOP and wellhead to 1,000 psi.
5. RIH w/ 6¾" rock bit and 3½" drill collars as possible, drill out cement plug at surface and tag surface casing shoe plug at +/- 665':
 - a) If shoe plug tagged inside surface casing, SI BOP and test surface casing to 500 psi. If casing tests, proceed to #6, otherwise, isolate holes in casing and squeeze with 50 sx C cmt w/ 2% CaCl₂. WOC, tag and pressure-test squeeze to 500 psi.
 - b) If shoe plug tagged below 715', POOH with drill string and RIH with AD-1 packer to 685'. Test 7-5/8" surface casing to 500 psi.
6. Continue drilling out surface casing shoe plug and cement plug 1,450 – 1,550' with 6¾" rock bit to top of 4½" casing stub at +/- 1,900'. Circulate hole clean and POOH w/ drill string, RD and release reverse unit.
7. RIH w/ mule-shoed sub on workstring to casing stub and attempt to enter casing:
 - a) If 4½" casing is entered, continue in hole and tag cmt plug at +/- 2,337'. Circulate hole with plugging mud and pump 25 sx C cement w/ 2% CaCl₂ at PBTd. WOC and tag this plug to insure minimum of 100' plug at PBTd.

Proposed re-entry/plugging procedure

Conoco Inc. - State U-5 #3

API #42-015-02908; 1980 FNL & 660 FWL, Unit Letter E, Section 5, T-17-S, R-29-E

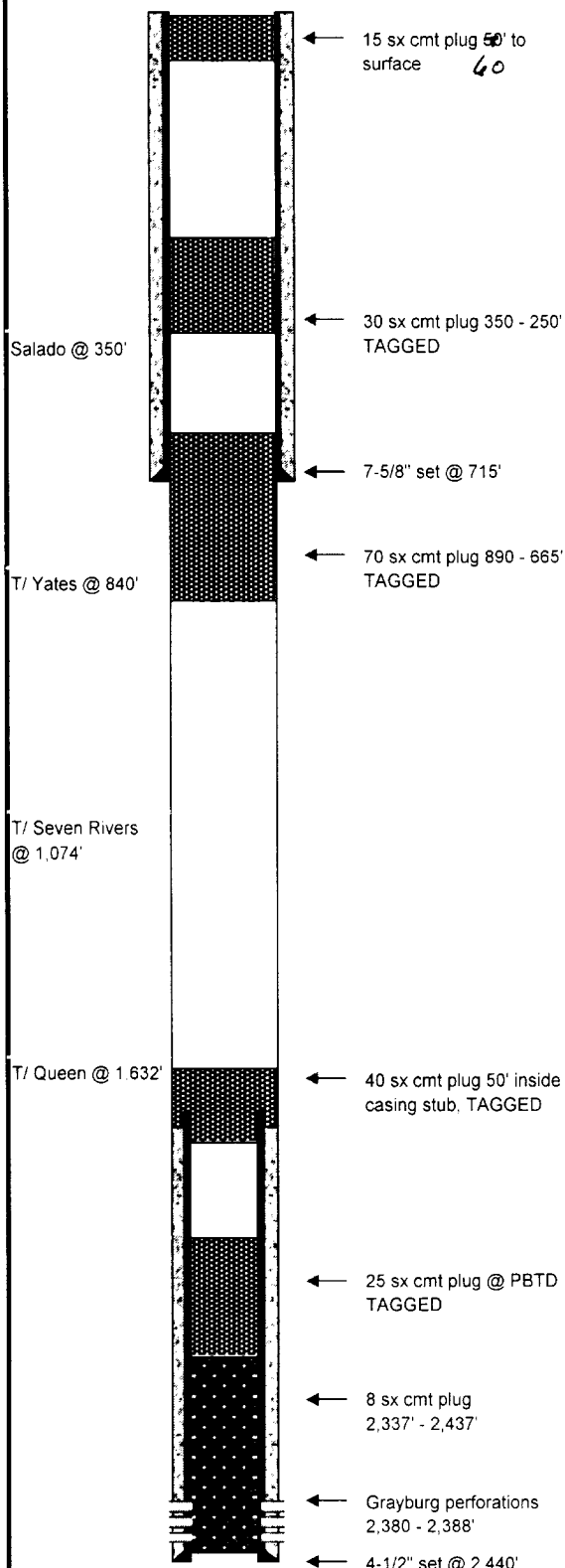
Eddy County, New Mexico

- b) PUH with tubing to 50' below casing stub and pump 40 sx C cement with 2% CaCl_2 . WOC and tag this plug at least 50' above casing stub. Proceed to #8.
 - c) If unable to enter 4½" casing, pump 40 sx C cement with 2% CaCl_2 at casing stub. WOC and tag this plug to insure minimum of 100' plug on top of casing stub.
- 8. With tubing at tag above casing stub, circulate hole with plugging mud.
 - 9. POOH with tubing to 890' and pump 70 sx C cement with 2% CaCl_2 at 890'. WOC and tag this plug no deeper than 665' to cover top of Yates and surface casing shoe.
 - 10. POOH with tubing to 350' and pump 30 sx C cement with 2% CaCl_2 at 350'. WOC and tag this plug no deeper than 250' to cover top of Salado.
 - 11. POOH with tubing and ND BOP. RIH with tubing to ~~50~~⁶⁰' and circulate cement to surface, estimated 15 sx C cement.
 - 12. Cut off wellhead and install dry hole marker. Cut off anchors. Empty and release steel working pit.

Conoco Inc.

Proposed Wellbore

State U-5 #3



Field Name:	Cave		
County:	Eddy	Well Type:	
State:	New Mexico	Depth:	2,440
RRC District:		Drilling Commenced:	April, 1957
Section:	5	Drilling Completed:	
Block:		Date Well Plugged:	July, 1957
Survey:	T-17-S; R-29-E	Longitude:	
		Latitude:	
		Freshwater Depths:	
API #:	42-015-02908		
Lease or ID:			

Casing

Description	Size (inches)	Depth (feet)	TOC (feet)	Cement (sacks)	Hole Size (inches)
Surface:	7-5/8"	715	Surface	360	9-5/8
Production:	4-1/2"	2,440	1,900	75	6-3/4
pulled est. 1,900' on orig.					
P&A					

Proposed Plugs

Description	Top (feet)	Depth (feet)	Volume (sacks)	Volume (cu ft)
1 Cement (1957)	2,337	2,437	8	11
2 Cement @ PBDT, estimated 2,337'	2,237	2,337	25	33
3 Cement, casing stub	1,850	1,950	40	53
4 Cement, Yates & surface casing	665	890	70	92
5 Cement, Salado	250	350	30	40
6 Cement, surface plug	surface	50	15	20

Perforations

Formation	Top (feet)	Depth (feet)	
Grayburg	2,380	2,388	

Formations

Name	Top of Formation	
Salado	350	
Yates	840	
Seven Rivers	1,074	
Queen	1,632	

Comments

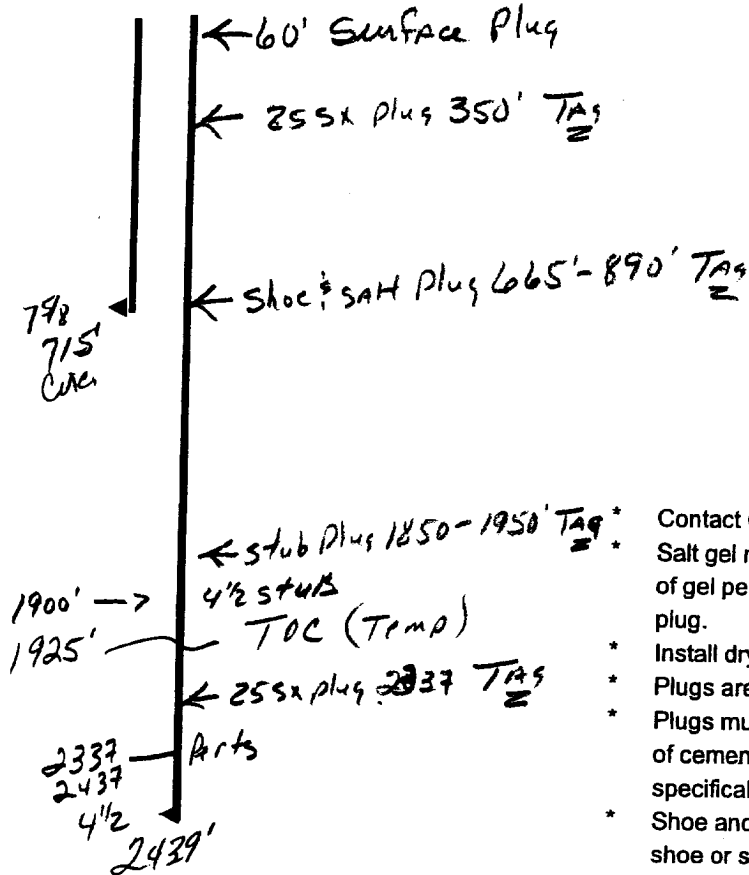
Prepared By: Jim Newman
Date: 1/7/2002

TRIPLE N
SERVICES INC.
MIDLAND, TX

Operator Conoco
 Well State Ut. #5 well 3
 Unit E Section S Township 17 Range 29
 API # 30-015-02408

TOPS

Salado	350'
B. Salt	660'
Gates	840'
Thiwers	1050'
Brewers	1400'
Queen	1630'
Grayburg	1980'
San Andres	2395'
Levington Sd	2435'



Contact OCD 24 hrs. prior to any work done.

Salt gel mud consisting of 10# brine with 25# of gel per barrel must be placed between each plug.

- * Install dry hole marker as per Rule 202.B.2
- * Plugs are to be set from point indicated up.
- * Plugs must not be less than 100' or 25 Sacks of cement, whichever is greater, unless specifically indicated.
- * Shoe and stub plugs will be 50' above and below shoe or stub and tagged.
- * Surface plug will be from 0' - 60'
- * Where plugs are required, cement must be placed inside and outside of all casing string(s) in the correct footage or sacks required, if no cement exists.
- * Plugs to be tagged will be indicated.