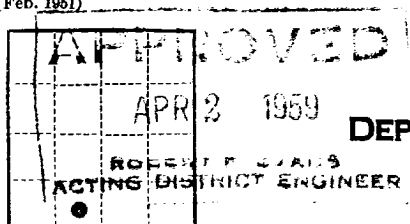


COPY TO O. C. C.

Budget Bureau No. 42-R358.4.  
Approval expires 12-31-60.

(SUBMIT IN TRIPLICATE)

UNITED STATES  
DEPARTMENT OF THE INTERIOR  
GEOLOGICAL SURVEY

Land Office Las CrucesLease No. 028480 (b)Unit Green B

## SUNDRY NOTICES AND REPORTS ON WELLS

NOTICE OF INTENTION TO DRILL.....	<input checked="" type="checkbox"/>	SUBSEQUENT REPORT OF WATER SHUT-OFF.....	
NOTICE OF INTENTION TO CHANGE PLANS.....		SUBSEQUENT REPORT OF SHOOTING OR ACIDIZING.....	
NOTICE OF INTENTION TO TEST WATER SHUT-OFF.....		SUBSEQUENT REPORT OF ALTERING CASING.....	
NOTICE OF INTENTION TO RE-DRILL OR REPAIR WELL.....		SUBSEQUENT REPORT OF RE-DRILLING OR REPAIR.....	
NOTICE OF INTENTION TO SHOOT OR ACIDIZE.....		SUBSEQUENT REPORT OF ABANDONMENT.....	
NOTICE OF INTENTION TO PULL OR ALTER CASING.....		SUPPLEMENTARY WELL HISTORY.....	
NOTICE OF INTENTION TO ABANDON WELL.....			

(INDICATE ABOVE BY CHECK MARK NATURE OF REPORT, NOTICE, OR OTHER DATA)

Loco Hills, New Mexico March 31, 1959Well No. 8 is located 330 ft. from [S] line and 2310 ft. from [W] line of sec. 29
SE/4 SE/4 SW/4 Sec. 29 17-S 29-E N.M.P.M.  
(1/4 Sec. and Sec. No.) (Twp.) (Range) (Meridian)
Grayburg-Jackson Eddy New Mexico  
(Field) (County or Subdivision) (State or Territory)
The elevation of the derrick floor above sea level is 3593' ft.

## DETAILS OF WORK

(State names of and expected depths to objective sands; show sizes, weights, and lengths of proposed casings; indicate mudding jobs, cementing points, and all other important proposed work)

WE PROPOSE TO DRILL THIS WELL AS FOLLOWS:

OBJECTIVE: Premier Sand (Basal Grayburg)

TOTAL DEPTH: Approximately 2630'.

METHOD OF DRILLING: Will run approximately 300' of 8 5/8" OD casing and obtain formation shut-off. If surface water is encountered in sufficient quantities will cement 8 5/8" OD with 50 sacks. If commercial production is indicated in the Premier Sand, will run a production string of 7" OD casing immediately above the pay horizon and cement with 150 sack cement.

DRILLING CONTRACTOR: Needham Drilling Company.

DRILLING OPERATIONS TO COMMENCE: On or about April 5, 1959.

RECEIVED  
APR 2 1959  
U. S. GEOLOGICAL SURVEY  
ARTESIA, NEW MEXICO

I understand that this plan of work must receive approval in writing by the Geological Survey before operations may be commenced.

Company GENERAL AMERICAN OIL COMPANY OF TEXASAddress P. O. BOX 416LOCO HILLS, NEW MEXICO

By R. J. Heard  
R. J. Heard  
 Title District Superintendent

## THEORY OF THE EARTH

### CHAPTER I. THE EARTH

#### SECTION I. THE EARTH

THE EARTH IS A SPHERE, AND ITS SURFACE IS

COVERED BY WATER.

THE EARTH IS A SPHERE, AND ITS SURFACE IS

COVERED BY WATER.

THE EARTH IS A SPHERE, AND ITS SURFACE IS

COVERED BY WATER.

THE EARTH IS A SPHERE, AND ITS SURFACE IS

COVERED BY WATER.

THE EARTH IS A SPHERE, AND ITS SURFACE IS

COVERED BY WATER.

THE EARTH IS A SPHERE, AND ITS SURFACE IS

COVERED BY WATER.

THE EARTH IS A SPHERE, AND ITS SURFACE IS

COVERED BY WATER.

THE EARTH IS A SPHERE, AND ITS SURFACE IS

COVERED BY WATER.

THE EARTH IS A SPHERE, AND ITS SURFACE IS

COVERED BY WATER.

THE EARTH IS A SPHERE, AND ITS SURFACE IS

COVERED BY WATER.

THE EARTH IS A SPHERE, AND ITS SURFACE IS

COVERED BY WATER.

THE EARTH IS A SPHERE, AND ITS SURFACE IS

COVERED BY WATER.

THE EARTH IS A SPHERE, AND ITS SURFACE IS

COVERED BY WATER.

THE EARTH IS A SPHERE, AND ITS SURFACE IS

COVERED BY WATER.

THE EARTH IS A SPHERE, AND ITS SURFACE IS

COVERED BY WATER.

THE EARTH IS A SPHERE, AND ITS SURFACE IS

COVERED BY WATER.

THE EARTH IS A SPHERE, AND ITS SURFACE IS

COVERED BY WATER.

THE EARTH IS A SPHERE, AND ITS SURFACE IS

COVERED BY WATER.

THE EARTH IS A SPHERE, AND ITS SURFACE IS

COVERED BY WATER.

THE EARTH IS A SPHERE, AND ITS SURFACE IS

COVERED BY WATER.

THE EARTH IS A SPHERE, AND ITS SURFACE IS

COVERED BY WATER.

NEW MEXICO OIL CONSERVATION COMMISSION

Well Location and Acreage Dedication Plat

Section A.

Date March 26, 1959

Operator General American Oil Co. Lease Green "B"  
Well No. 8 Unit Letter W Section 29 Township 17 S Range 29 E NMPM  
Located 330 Feet From S Line, 2310 Feet From W Line  
County Eliz G. L. Elevation 3591 Dedicated Acreage 40 Acres  
Name of Producing Formation Grayburg Pool Grayburg-Jackson

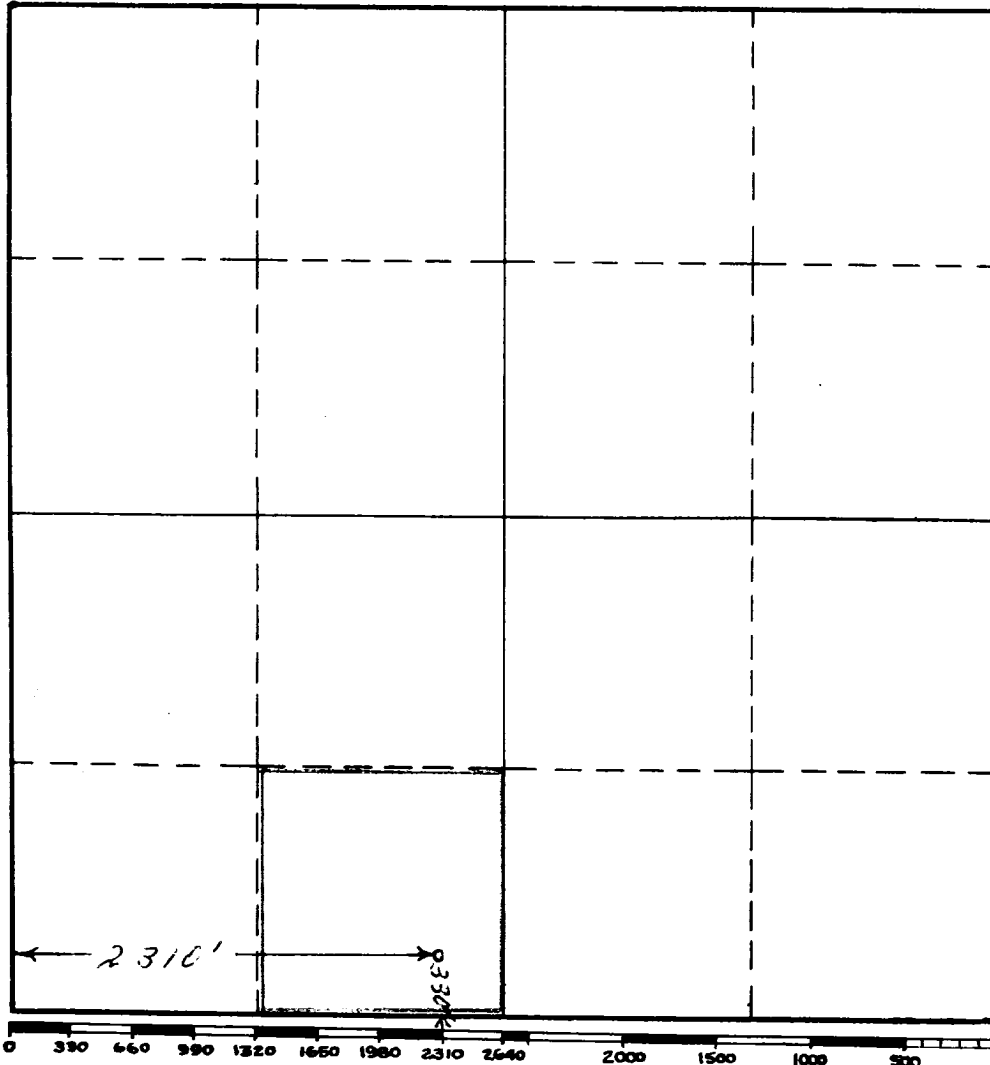
1. Is the Operator the only owner\* in the dedicated acreage outlined on the plat below?  
Yes X No       .
2. If the answer to question one is "no," have the interests of all the owners been consolidated by communitization agreement or otherwise? Yes        No       . If answer is "yes," Type of Consolidation
3. If the answer to question two is "no," list all the owners and their respective interests below:

Owner

Land Description

RECEIVED  
APR 2 1959  
U. S. GEOLOGICAL SURVEY  
ALBUQUERQUE, NEW MEXICO

Section B



This is to certify that the information in Section A above is true and complete to the best of my knowledge and belief.

General American Oil Co.  
(Operator)

        
(Representative)

Loco Hills, N. M.  
Address

This is to certify that the well location shown on the plat in Section B was plotted from field notes of actual surveys made by me or under my supervision and that the same is true and correct to the best of my knowledge and belief.

Date Surveyed 3/26/59

W. P. Sheldon  
Registered Professional  
Engineer and/or Land Surveyor.

Certificate No. 963

(See instructions for completing this form on the reverse side)

## INSTRUCTIONS FOR COMPLETION

1. Operator shall furnish and certify to the information called for in Section A.
2. Operator shall outline the dedicated acreage for both oil and gas wells on the plat in Section B.
3. A registered professional engineer or land surveyor registered in the State of New Mexico or approved by the Commission shall show on the plat the location of the well and certify this information in the space provided.
4. All distances shown on the plat must be from the outer boundaries of Section.
5. If additional space is needed for listing owners and their respective interests as required in question 3, Section A, please use space below

\* "Owner" means the person who has the right to drill into and to produce from any pool and to appropriate the production either for himself or for himself and another. (65-3-29 (e) NMSA 1953 Comp.)