

NO. OF COPIES RECEIVED	6
DISTRIBUTION	
SANTA FE	1
FILE	1
U.S.G.S.	2
LAND OFFICE	7
OPERATOR	1

RECEIVED NEW MEXICO OIL CONSERVATION COMMISSION

FEB 20 1968

O. O. C.
LAND OFFICE

Form C-101
Revised 1-1-65

5A. Indicate Type of Lease STATE <input checked="" type="checkbox"/> FEE <input type="checkbox"/>
5. State Oil & Gas Lease No. B 1778-31

APPLICATION FOR PERMIT TO DRILL, DEEPEN, OR PLUG BACK

1a. Type of Work DRILL <input type="checkbox"/> DEEPEN <input checked="" type="checkbox"/> PLUG BACK <input type="checkbox"/>		7. Unit Agreement Name	
b. Type of Well OIL WELL <input checked="" type="checkbox"/> GAS WELL <input type="checkbox"/> OTHER <input type="checkbox"/>		8. Farm or Lease Name State A	
2. Name of Operator FRANKLIN, ASTON & FAIR, INC.		9. Well No. 1	
3. Address of Operator P. O. Box 1090, Roswell, New Mexico		10. Field and Pool, or Wildcat Undesignated Loco Hills	
4. Location of Well UNIT LETTER 0 LOCATED 330 FEET FROM THE South LINE AND 1650 FEET FROM THE East LINE OF SEC. 36 TWP. 17S RGE. 29E NMPM		12. County Eddy	
19. Proposed Depth 3500'		19A. Formation San Andres	20. Rotary or C.T. Cable
21. Elevations (Show whether DP, RT, etc.) 3565' GR	21A. Kind & Status Plug. Bond Blanket	21B. Drilling Contractor A. J. Smith	22. Approx. Date Work will start February 26, 1968

PROPOSED CASING AND CEMENT PROGRAM

SIZE OF HOLE	SIZE OF CASING	WEIGHT PER FOOT	SETTING DEPTH	SACKS OF CEMENT	EST. TOP
	8 5/8"	26#	594'	50	?
	7"	20#	2650'	100	?
6 1/4"	4 1/2"	14#	3500'	150	

This well was completed March 12, 1940, flowing 240 BOPD from open hole at 2650' to 2767' TD in the Loco Hills sand after a 100-quart nitro-shot. * It is our plan to re-enter the hole and clean out to TD, then run a Gamma Ray-Neutron with Caliper to determine if entire Loco Hills sand is penetrated, top of cement is behind 7" casing, and if cement retainer can be set in Lime section below 7" casing and above the Loco Hills pay. The Loco Hills sand will be squeezed for water shut off and the cement drilled out with a reverse circulating unit. The well will be deepened to approximately 3500' by cable tool making a 6 1/4" hole to test the Premier and San Andres.

* well has been operated by Newmont Oil Co. as a water injection well for several years.

IN ABOVE SPACE DESCRIBE PROPOSED PROGRAM: IF PROPOSAL IS TO DEEPEN OR PLUG BACK, GIVE DATA ON PRESENT PRODUCTIVE ZONE AND PROPOSED NEW PRODUCTIVE ZONE. GIVE BLOWOUT PREVENTER PROGRAM, IF ANY.

I hereby certify that the information above is true and complete to the best of my knowledge and belief.

Signed Sam P. Stephens Title Executive Vice President Date Feb. 19, 1968
(This space for State Use)

APPROVED BY W. A. Gressett TITLE OIL AND GAS INSPECTOR DATE FEB 21 1968
CONDITIONS OF APPROVAL, IF ANY:

MEXICO OIL CONSERVATION COMMISSION
WELL LOCATION AND ACREAGE DEDICATION PLAT

Form C-102
Supersedes C-128
Effective 1-1-65

All distances must be from the outer boundaries of the Section.

Operator FRANKLIN, ASTON & FAIR, INC.			Lease State A		Well No. 1
Unit Letter 0	Section 36	Township 17S	Range 29E	County Eddy	
Actual Footage Location of Well: 330 feet from the South line and 1650 feet from the East line					
Ground Level Elev: 3565' GR	Producing Formation San Andres		Pool Undesignated	Dedicated Acreage: 40 Acres	

1. Outline the acreage dedicated to the subject well by colored pencil or hachure marks on the plat below.
2. If more than one lease is dedicated to the well, outline each and identify the ownership thereof (both as to working interest and royalty).
3. If more than one lease of different ownership is dedicated to the well, have the interests of all owners been consolidated by communitization, unitization, force-pooling, etc?

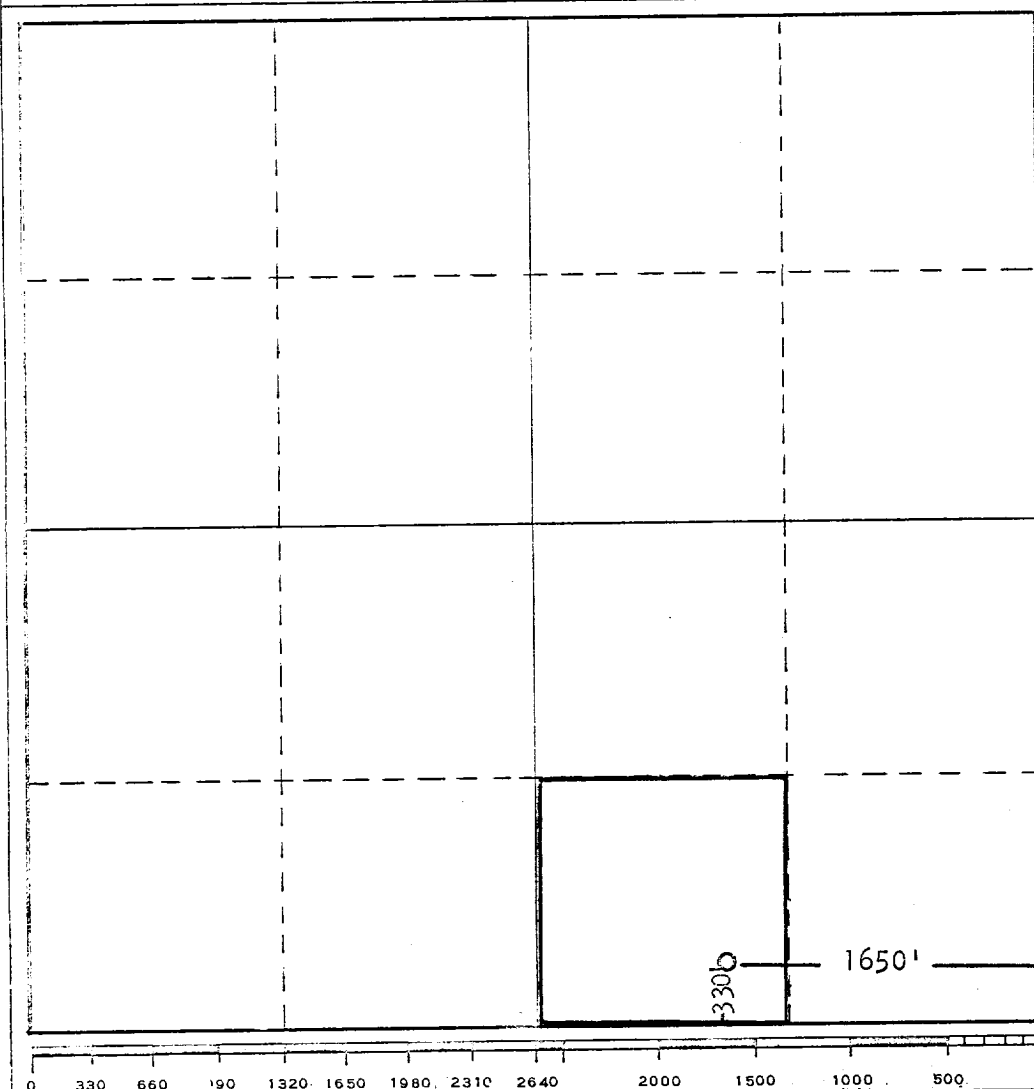
RECEIVED

1968

☐ Yes ☐ No If answer is "yes," type of consolidation _____

If answer is "no," list the owners and tract descriptions which have actually been consolidated. (Use reverse side of this form if necessary.) _____

No allowable will be assigned to the well until all interests have been consolidated (by communitization, unitization, forced-pooling, or otherwise) or until a non-standard unit, eliminating such interests, has been approved by the Commission.



CERTIFICATION

I hereby certify that the information contained herein is true and complete to the best of my knowledge and belief.

Tom P. Stephens

Name

Tom P. Stephens

Position

Executive Vice-President

Company

Franklin, Aston & Fair, Inc.

Date

Feb. 19, 1968

I hereby certify that the well location shown on this plat was plotted from field notes of actual surveys made by me or under my supervision, and that the same is true and correct to the best of my knowledge and belief.

Date Surveyed

Registered Professional Engineer and/or Land Surveyor

Certificate No.