

(May, 1983)

DEC 07 1984

O. C. D.

ARTESIA OFFICE

UNITED STATES
DEPARTMENT OF THE INTERIOR
GEOLOGICAL SURVEY

SUBMIT IN TRIPPLICATE*

(Other instructions on
reverse side)Form approved.
Budget Bureau No. 42-R1425.

APPLICATION FOR PERMIT TO DRILL, DEEPEN, OR PLUG BACK

1a. TYPE OF WORK

DRILL ☐DEEPEN ☐PLUG BACK ☐

b. TYPE OF WELL

OIL
WELL ☒GAS
WELL ☐OTHER ☒ - Re-entrySINGLE
ZONE ☐MULTIPLE
ZONE ☐

2. NAME OF OPERATOR

Anadarko Production Company ✓

3. ADDRESS OF OPERATOR

P. O. Drawer 130, Artesia, New Mexico 88210

4. LOCATION OF WELL (Report location clearly and in accordance with any State requirements.)*

At surface

At proposed prod. zone 1295' FNL & 1345' FWL
Same

14. DISTANCE IN MILES AND DIRECTION FROM NEAREST TOWN OR POST OFFICE*

Approximately 3 miles Northeast of Loco Hills, New Mexico

15. DISTANCE FROM PROPOSED*

LOCATION TO NEAREST
PROPERTY OR LEASE LINE, FT.
(Also to nearest drig. unit line, if any)

1295'

16. NO. OF ACRES IN LEASE

160

17. NO. OF ACRES ASSIGNED
TO THIS WELL

40

18. DISTANCE FROM PROPOSED LOCATION*
TO NEAREST WELL, DRILLING, COMPLETED,
OR APPLIED FOR, ON THIS LEASE, FT.

825'

19. PROPOSED DEPTH

3150'

20. ROTARY OR CABLE TOOLS

Reverse Unit

21. ELEVATIONS (Show whether DF, RT, GR, etc.)

3735' GL

22. APPROX. DATE WORK WILL START*

Nov. 15, 1984

23.

PROPOSED CASING AND CEMENTING PROGRAM

SIZE OF HOLE	SIZE OF CASING	WEIGHT PER FOOT	SETTING DEPTH	QUANTITY OF CEMENT
7-7/8"	7"	20.0#	475'	350 sx circulated
6-1/4"	5-1/2"	15.5#	3150'	750 sx - Top of Salt

1. Rig up pulling unit with reverse circulating equipment.
2. Clean out hole with 7-7/8" bit to top of 8-5/8" casing stub @ 200' GL; drill out cement plug in 8-5/8" casing and clean out to bottom of 8-5/8" casing @ 520'.
3. Run 520' of 7" casing; circulate or ready-mix cement to surface.
4. Install and test Blowout Preventor.
5. Clean out hole to previous TD of 3130' and drill approximately 20' to 30' of rat hole.
6. Run Open Hole logs.
7. Set and bring cement to base of Salt on 5 1/2" casing.
8. Perforate, acidize and fracture treat.
9. Run 2-3/8" tubing, bottomhole pump and rods; install pumping equipment and place well on production.

Note: This well was drilled in 1951 as Roland Rich Woolley's McIntyre #7. This unorthodox location was approved in April, 1951 - Order No. 843, Case 199.

IN ABOVE SPACE DESCRIBE PROPOSED PROGRAM: If proposal is to deepen or plug back, give data on present productive zone and proposed new productive zone. If proposal is to drill or deepen directionally, give pertinent data on subsurface locations and measured and true vertical depths. Give blowout preventer program, if any.

24.

SIGNED

Truman D. Jones

TITLE

Field Foreman

DATE

Nov. 7, 1984

(This space for Federal or State office use)

PERMIT NO.

APPROVAL DATE

APPROVED BY

TITLE

DATE

CONDITIONS OF APPROVAL, IF ANY:

Subject to
Like Approval
by State

*See Instructions On Reverse Side

APPROVAL SUBJECT TO
GENERAL REQUIREMENTS AND
SPECIAL STIPULATIONS
ATTACHED

**NEW MEXICO OIL CONSERVATION COMMISSION
WELL LOCATION AND ACREAGE DEDICATION PLAT**

Form C-102
Supersedes C-128
Effective 1-1-65

All distances must be from the outer boundaries of the Section.

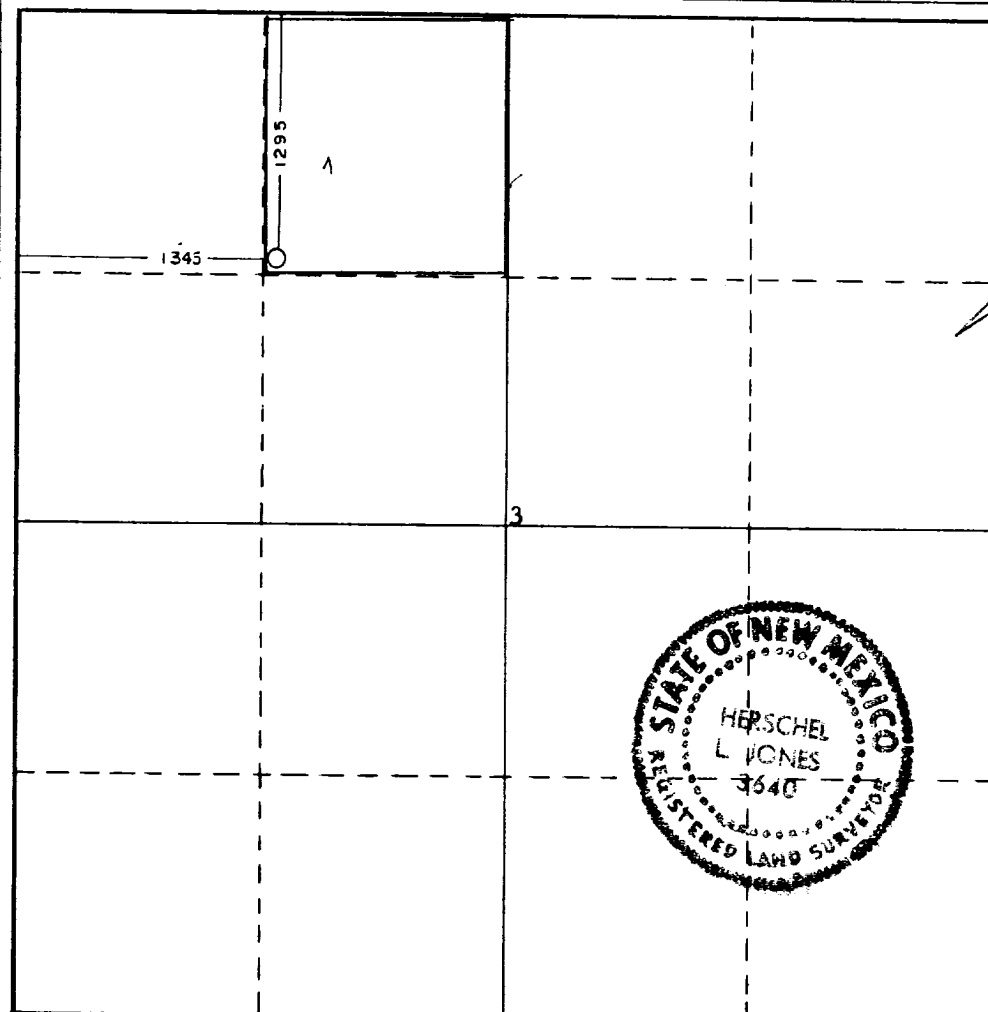
Operator ANADARKO PRODUCTION COMPANY			Lease FEDERAL "Q"		Well No. 5
Unit Letter "C"	Section 3	Township 17 South	Range 30 East	County Eddy	
Actual Footage Location of Well: <div style="display: flex; justify-content: space-between;"> 1295 feet from the North line and 1345 feet from the West line </div>					
Ground Level Elev. 3735.0	Producing Formation Grayburg	Pool Grayburg-Jackson-Queen San Andres		Dedicated Acreage: 40 Acres	

1. Outline the acreage dedicated to the subject well by colored pencil or hachure marks on the plat below.
2. If more than one lease is dedicated to the well, outline each and identify the ownership thereof (both as to working interest and royalty).
3. If more than one lease of different ownership is dedicated to the well, have the interests of all owners been consolidated by communitization, unitization, force-pooling, etc?

☐ Yes ☐ No If answer is "yes," type of consolidation _____

If answer is "no," list the owners and tract descriptions which have actually been consolidated. (Use reverse side of this form if necessary.) _____

No allowable will be assigned to the well until all interests have been consolidated (by communitization, unitization, forced-pooling, or otherwise) or until a non-standard unit, eliminating such interests, has been approved by the Commission.



CERTIFICATION

I hereby certify that the information contained herein is true and complete to the best of my knowledge and belief.

[Signature]
Name
Jerry E. Buckles

Position
Area Supervisor

Company
Anadarko Production Company

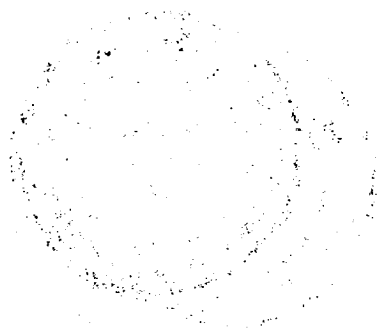
Date
November 6, 1984

I hereby certify that the well location shown on this plat was plotted from field notes of actual surveys made by me or under my supervision, and that the same is true and correct to the best of my knowledge and belief.

Date Surveyed
November 5, 1984

Registered Professional Engineer
and/or Land Surveyor

[Signature]
Certificate No. **3000**

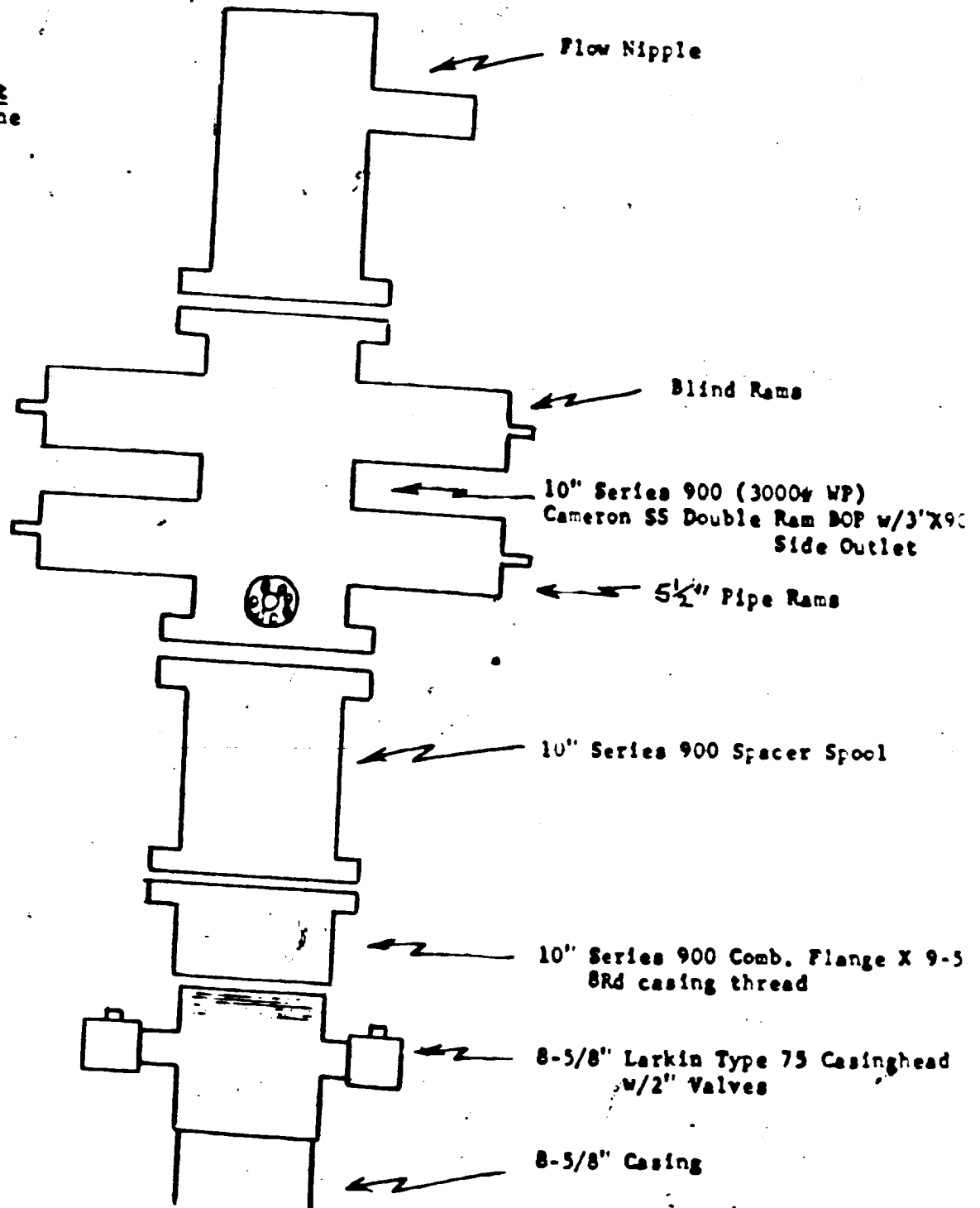


Anadarko
PRODUCTION COMPANY

P. O. Box 87 • Loco Hills New Mexico 88256 • (505) 877-2411

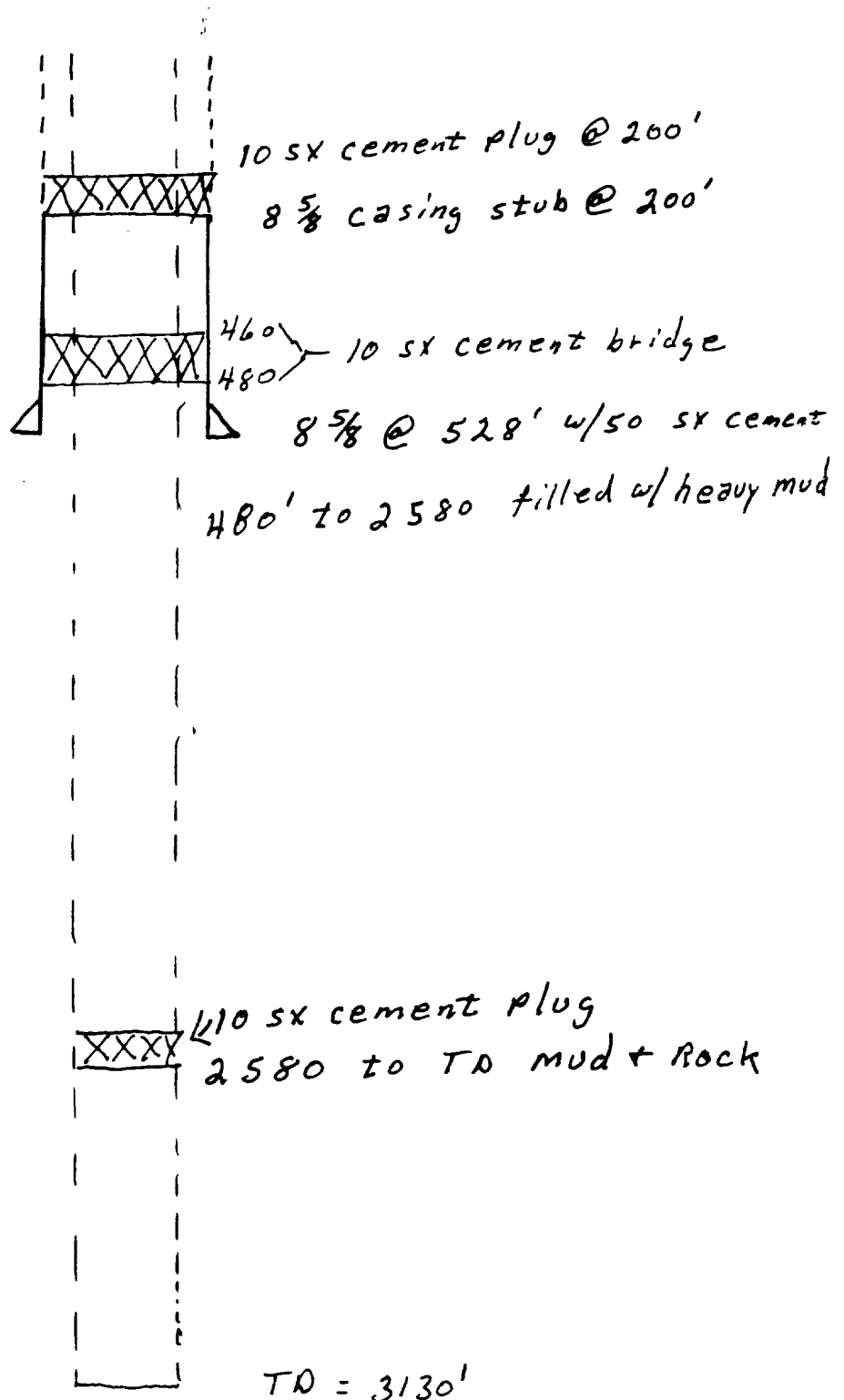
A
Pentacle
Eastern
Company

Closing Unit
4 Stage Payne



B O P Schematic

Fed. Q#5
(Formerly MSIN #7)
1345' FWL + 1295 FSL
SEC-3-17-30



DATA SHEET

This data sheet is provided in reference to the attached "Application for Permit to Drill: Anadarko's Federal Q #5

1. Location: 1295' FNL & 1345' FWL Sec. 3, T17S, R30E, Eddy County, New Mexico
2. Elevation: 3735' GL
3. Geological Name of Surface Formation: Triassic Doakum (Santa Rosa)
4. Type of Drilling Tools to be utilized: Rotary Tools
5. Proposed Drilling Depth: 3150'
6. Tops of Important Geological Markers:

T. Salt - -	510'	7-Rivers - -	1680'
B. Salt - -	1190'	Queen - - -	2200'
Tansill - -	1210'	Grayburg - -	2660'
Yates - - -	1300'	San Andres -	2950'

7. Estimated Depth of Anticipated Water, Oil or Gas:

Oil: - - 2660' - 2950'

8. Casing Program:

7" - 20.0# K-55 or J-55 - New
5-1/2" - 15.5# K-55 or J-55 - New

9. Setting Depth of Casing:

7" - 475' - approx. 350 sx cement
5-1/2" - 3150' - approx. 750 sx cement

10. Specifications for Pressure Control Equipment: (See attached Schematic)

This rig will have a Series 900 BOP with 5½" Blind Rams, kill line and choke manifold; Koomey Hydraulic controls & accumulator with remote controls. When nipping up, test BOP and Choke to 1000 psi. Operate BOP equipment once a day, or as directed by Company Representative.

11. Mud Program:

Spud and drill with fresh water Native Mud to a depth of approx. 475'. Drill out from under surface casing with 10# Brine water to within 50' of T D while maintaining a Ph of 10. At this point, paper & gel will be used to clean hole prior to tripping out of hole if O. H. logs are to be run.

12. Testing, Logging & Coring Program:

- a. Testing: No drill stem tests will be conducted.
- b. Coring: No coring is planned.
- c. Logging: Plan to run O H Logs prior to setting 5½" casing.

13. Potential Hazards:

None are expected. Above described BOP should take care of any blowout. Numerous wells have been drilled in this area without problems.

14. Anticipated Starting Date & Duration:

Plans are to begin drilling operations about 11-15-84. Approximately 6 days are required to drill the well and 2 weeks for completion.

