

c/sf

Form 9-321-G

RECEIVED BY

DEC 12 1984

APPLICATION

ARTESIA, OCSME

UNITED STATES
DEPARTMENT OF THE INTERIOR
GEOLOGICAL SURVEY

SUBMIT IN TRIPLICATE*
NM OIL CONG. MISSION
Drawer DD
Artesia, NM 88210

Form approved,
Budget Bureau No. 42-R1425.

DRILL ☐ DEEPEN ☐ PLUG BACK ☐

b. TYPE OF WELL

OIL WELL ☒

GAS WELL ☐

OTHER ☒ - Re-entry

SINGLE ZONE ☐

MULTIPLE ZONE ☐

2. NAME OF OPERATOR

Anadarko Production Company

3. ADDRESS OF OPERATOR

P. O. Drawer 130, Artesia, New Mexico 88210

4. LOCATION OF WELL (Report location clearly and in accordance with any State requirements.)*
At surface

1295' FNL & 1345' FWL

At proposed prod. zone Same

14. DISTANCE IN MILES AND DIRECTION FROM NEAREST TOWN OR POST OFFICE*

Approximately 3 miles Northeast of Loco Hills, New Mexico

15. DISTANCE FROM PROPOSED*

LOCATION TO NEAREST
PROPERTY OR LEASE LINE, FT.
(Also to nearest drlg. unit line, if any)

1295'

16. NO. OF ACRES IN LEASE

160

17. NO. OF ACRES ASSIGNED
TO THIS WELL

40

18. DISTANCE FROM PROPOSED LOCATION*
TO NEAREST WELL, DRILLING, COMPLETED,
OR APPLIED FOR, ON THIS LEASE, FT.

825'

19. PROPOSED DEPTH

3150'

20. ROTARY OR CABLE TOOLS

Reverse Unit

21. ELEVATIONS (Show whether DF, RT, GR, etc.)

3735' GL

22. APPROX. DATE WORK WILL START*

23.

PROPOSED CASING AND CEMENTING PROGRAM

SIZE OF HOLE	SIZE OF CASING	WEIGHT PER FOOT	SETTING DEPTH	QUANTITY OF CEMENT
12-1/4"	8-5/8"	24.0#	0' - 200'	250 sx circulated
11"	8-5/8"	24.0#	200' - 520'	Already cemented w/50 sx
6-1/4"	5-1/2"	15.5#	0' - 2800'	750 sx - Top of Salt
6-1/4"	4-1/2"	10.5# FJ	2750' - 3150'	uncemented

*****AMENDED DRILLING APPLICATION*****

This amended Drilling Application is to allow Anadarko to set and cement the 5 1/2" casing at 2800' (350' off bottom) instead of 3150' (on bottom) as shown on the Original Drilling Application. We would then set an uncemented (loose) 4 1/2" Flush joint liner from 2750' to 3150'

This well was shot with Nitro (See Exhibit #1 attached) in the Grayburg (lower 300') and we feel that the completion would be simplified if the casing was not cemented thru this shot section.

The 5 1/2" would first be cemented @ 2800'; the well fraced open hole & then the uncemented liner inserted just prior to putting the well on pump.

IN ABOVE SPACE DESCRIBE PROPOSED PROGRAM: If proposal is to deepen or plug back, give data on present productive zone and proposed new productive zone. If proposal is to drill or deepen directionally, give pertinent data on subsurface locations and measured and true vertical depths. Give blowout preventer program, if any.

24.

SIGNED

[Signature]

TITLE

Area Supervisor

DATE

Dec. 10, 1984

(This space for Federal or State office use)

PERMIT NO.

APPROVAL DATE

APPROVED BY

TITLE

DATE

CONDITIONS OF APPROVAL, IF ANY:

12-11-84

*See Instructions On Reverse Side

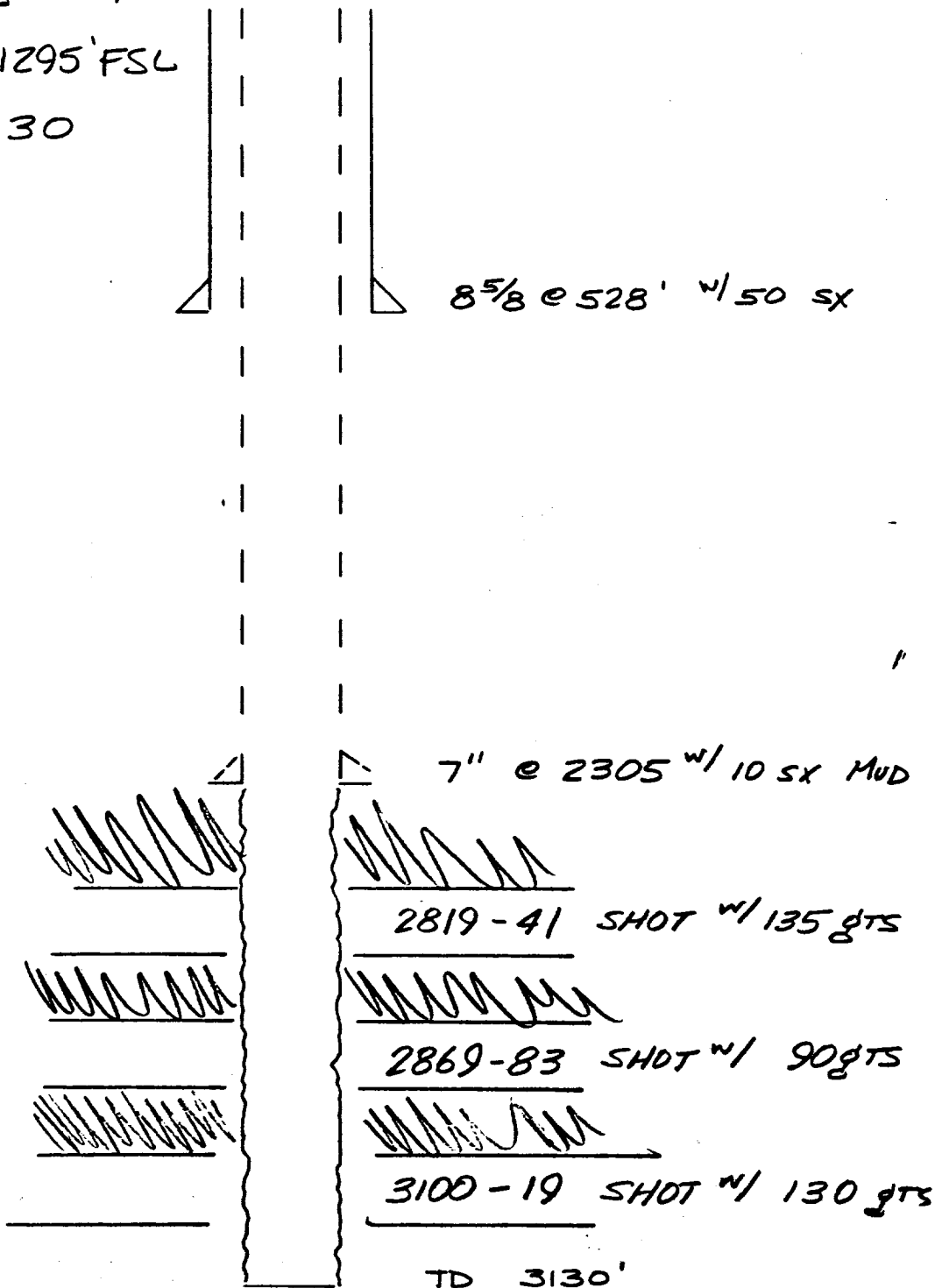
56B

File & start paper work

Buss

Subject:	Page No.	Of
File	By	Date

Q #5
McIntyre #7
1345' FNL & 1295' FSL
Sec 3-17-30



FILED

DATA SHEET

This data sheet is provided in reference to the attached "Application for Permit to Drill: Anadarko's Federal Q #5

1. Location: 1295' FNL & 1345' FWL Sec. 3, T17S, R30E, Eddy County, New Mexico
2. Elevation: 3735' GL
3. Geological Name of Surface Formation: Triassic Doakum (Santa Rosa)
4. Type of Drilling Tools to be utilized: Rotary Tools
5. Proposed Drilling Depth: 3150'
6. Tops of Important Geological Markers:

T. Salt - -	510'	7-Rivers - -	1680'
B. Salt - -	1190'	Queen - - -	2200'
Tansill - -	1210'	Grayburg - -	2660'
Yates - - -	1300'	San Andres -	2950'

7. Estimated Depth of Anticipated Water, Oil or Gas:

Oil: - - 2660' - 2950'

8. Casing Program:

8-5/8" - 24.0# K-55 or J-55 - New
 3-1/2" - 15.5# K-55 or J-55 - New
 4-1/2" - 10.5# FJ or Hydril - New

9. Setting Depth of Casing:

8-5/8"-0'-200' - approx. 250 sk cement (8-5/8" already set from 200'-52
 3-1/2"-0'-2800' - approx. 750 sk cement
 4-1/2" - 2750' - 3150' - uncemented (loose liner)

10. Specifications for Pressure Control Equipments: (See attached Schematic)

This rig will have a Series 900 BOP with 3 1/2" Blind Rams, kill line and choke manifold; Koomey Hydraulic controls & accumulator with remote controls. When nipping up, test BOP and Choke to 1000 psi. Operate BOP equipment once a day, or as directed by Company Representative.

11. Mud Program:

Spud and drill with fresh water Native Mud to a depth of approx. 475'. Drill out from under surface casing with 10# Brine water to within 50' of T D while maintaining a Ph of 10. At this point, paper & gel will be used to clean hole prior to tripping out of hole if O. H. logs are to be run.

12. Testing, Logging & Coring Program:

- a. Testing: No drill stem tests will be conducted.
- b. Coring: No coring is planned.
- c. Logging: Plan to run O H Logs prior to setting 3 1/2" casing.

13. Potential Hazards:

None are expected. Above described BOP should take care of any blowout. Numerous wells have been drilled in this area without problems.

14. Anticipated Starting Date & Duration:

Plans are to begin drilling operations about 11-15-84. Approximately 6 days are required to drill the well and 2 weeks for completion.