

NUMBER OF COPIES RECEIVED	
DISTRIBUTION	
SANTA FE	
FILE	
U.S.G.S.	
LAND OFFICE	
TRANSPORTER	OIL GAS
PRODUCTION OFFICE	
OPERATOR	

NEW MEXICO OIL CONSERVATION COMMISSION
WELL LOCATION AND ACREAGE DEDICATION PLAT
 SEE INSTRUCTIONS FOR COMPLETING THIS FORM ON THE REVERSE SIDE

FORM C-128
 Revised 5/1/57

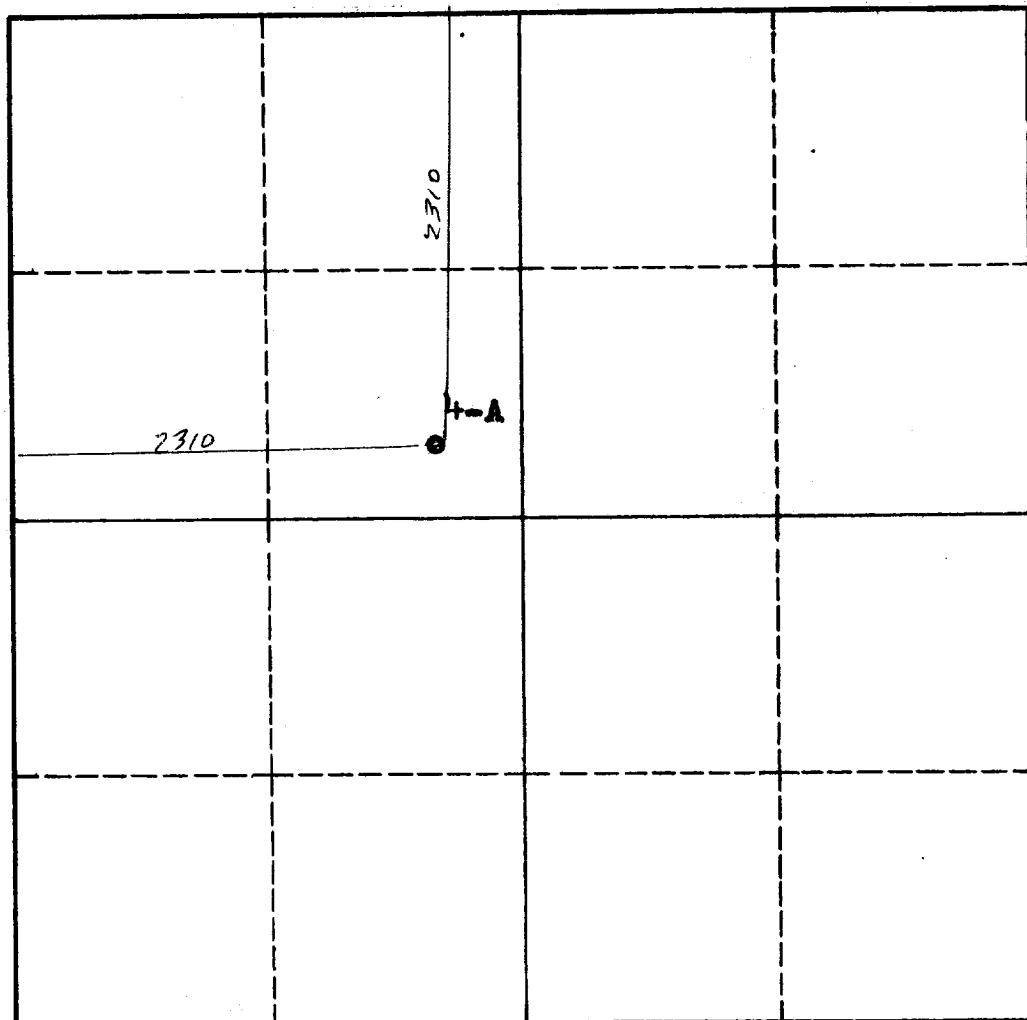
SECTION A

Operator Graridge Corporation		Lease Berry Federal		Well No. 4-A
Unit Letter 7	Section 21	Township 17 South	Range 30 East	County Eddy
Actual Footage Location of Well: 2310 feet from the North line and 2310 feet from the West line				
Ground Level Elev. 3648	Producing Formation Abc	Pool Loco Hills Abc	Dedicated Acreage: 40 Acres	

- Is the Operator the only owner in the dedicated acreage outlined on the plat below? YES ☒ NO ____ . ("Owner" means the person who has the right to drill into and to produce from any pool and to appropriate the production either for himself or for himself and another. (65-3-29 (e) NMSA 1935 Comp.)
- If the answer to question one is "no," have the interests of all the owners been consolidated by communitization agreement or otherwise? YES ____ NO ____ . If answer is "yes," Type of Consolidation ____
- If the answer to question two is "no," list all the owners and their respective interests below:

Owner	Land Description
	RECEIVED JAN 23 1962

SECTION B



0 330 660 990 1320 1650 1980 2310 2640 2000 1500 1000 500 0

U. S. GEOLOGICAL SURVEY
 ALBUQUERQUE, NEW MEXICO

I hereby certify that the information in SECTION A above is true and complete to the best of my knowledge and belief.

Name	J. P. Darnell
Position	Superintendent
Company	Graridge Corp.
Date	January 22, 1962

I hereby certify that the well location shown on the plat in SECTION B was plotted from field notes of actual surveys made by me or under my supervision, and that the same is true and correct to the best of my knowledge and belief.

Date Surveyed	January 22, 1962
Registered Professional Engineer and/or Land Surveyor	

John A. Mathis Jr.

Certificate No.

1502

INSTRUCTIONS FOR COMPLETION OF FORM C-128

1. Operator shall furnish and certify to the information called for in Section A.
2. Operator shall outline the dedicated acreage for *both* oil and gas wells on the plat in Section B.
3. A registered professional engineer or land surveyor registered in the State of New Mexico or approved by the Commission shall show on the plat the location of the well and certify this information in the space provided.
4. All distances shown on the plat must be from the outer boundaries of the Section.
5. If additional space is needed for listing owners and their respective interests as required in question 3 of Section A, please use space below.