

457

Form 3160-5
 (June 1990)

UNITED STATES
 DEPARTMENT OF THE INTERIOR
 BUREAU OF LAND MANAGEMENT

SUNDRY NOTICES AND REPORTS ON WELLS

Do not use this form for proposals to drill or to deepen or reentry to a different reservoir.
 Use "APPLICATION FOR PERMIT—" for such proposals

SUBMIT IN TRIPLICATE

RECEIVED

FORM APPROVED
 Budget Bureau No. 1004-0133
 Expires: March 31, 1993

5. Lease Designation and Serial No.

LC-028936b

6. If Indian, Allottee or Tribe Name

7. If Unit or CA, Agreement Designation

8. Well Name and No.

Federal M #3

9. API Well No.

30-015-04407

10. Field and Pool, or Exploratory Area

Loco Hills-On-GB-SA

11. County or Parish, State

Eddy, New Mexico

1. Type of Well

☒ Oil Well ☐ Gas Well ☐ Other

2. Name of Operator

Anadarko Petroleum Corporation

3. Address and Telephone No.

PO Drawer 130, Artesia, NM 88211-0130 (505) 677-2411

4. Location of Well (Footage, Sec., T., R., M., or Survey Description)

990' FSL & 1650' FEL
 Sec. 31, T17S, R30E

MAY 13 '94

C.C.D.

ARTESIA, OFFICE

12 CHECK APPROPRIATE BOX(es) TO INDICATE NATURE OF NOTICE, REPORT, OR OTHER DATA

TYPE OF SUBMISSION

☒ Notice of Intent

☐ Subsequent Report

☐ Final Abandonment Notice

TYPE OF ACTION

☒ Abandonment

☐ Recompletion

☐ Plugging Back

☐ Casing Repair

☐ Altering Casing

☐ Other Notice of Intent to P&A

☐ Change of Plans

☐ New Construction

☐ Non Routine Fracturing

☐ Water Shut-Off

☐ Conversion to Injection

☐ Dispose Water

(Note: Report results of multiple completion on Well Completion or Recompletion Report and Log form.)

13 Describe Proposed or Completed Operations (Clearly state all pertinent details, and give pertinent dates, including estimated date of starting any proposed work. If well is directionally drilled, give subsurface locations and measured and true vertical depths for all markers and zones pertinent to this work.)

1. RUPU. GIH with tbg to CIBP at 2712' and circulate hole with salt gel mud.
2. Spot 25 sx Class C cement with 2% CaCl from 2712' up to 2564'. This plug covers Grayburg top.
3. Spot 25 sx Class C cement with 2% CaCl from 2136' up to 1988'. This plug covers Queen top.
4. TOH. Perforate 4 squeeze holes at 1240' (100' below salt section). GIH with 7" packer and cement squeeze with 35 sx Class C cement with 2% CaCl, leaving cement in and out of casing from 1240' up to 1108'. WOC. Tag top of plug. This plug isolates bottom of salt.
5. Perforate 4 squeeze holes at 505' (50' below top of salt section). Cement squeeze with 40 sx Class C cement with 2% CaCl, leaving cement in and out of casing from 505' up to 354'. WOC. Tag plug. This plug covers 8 5/8" shoe and isolates top of salt.
6. Perforate 4 squeeze holes at 50'. Circulate cement down 7" and up 8 5/8". Dig out around 8 5/8" and ready mix. This is surface plug.
7. Cut off all casing and anchors below surface; set P&A marker; rig and reseed location.

14. I hereby certify that the foregoing is true and correct

Signed

Mike Bussell

Title Field Foreman

Date 04-25-94

(This space for Federal or State office use)

Approved by

(MIG. SGD.) JOE G. LARA

Title

PETROLEUM ENGINEER

Date 5/11/94

Conditions of approval, if any:

see attached.

OIL AND GAS INSPECTOR

Title 18 U.S.C. Section 1001, makes it a crime for any person knowingly and willfully to make in any department or agency of the United States any false, fictitious or fraudulent statement or representations as to any matter within its jurisdiction.

*See instructions on Reverse Side

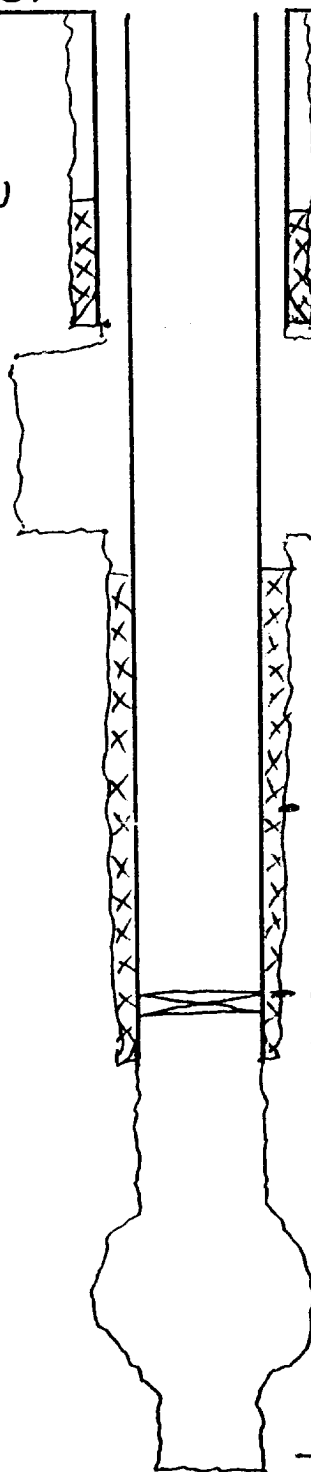
20

Anadarko 

Elev - 3559' GL

Loco Hills "M" Federal #3 4/24/92

As well is now



Calculated cement top at 305'

8 5/8" casing to 455' (Cemented with 50sx)

Top of salt section at 455'

Bottom of salt section at 1140'

Calculated cement top at 1164'

Queen Formation top at 2086'

CIBP set at 2712'

Grayburg Formation top at 2712'

7" casing to 2777' (Cemented with 100sx)

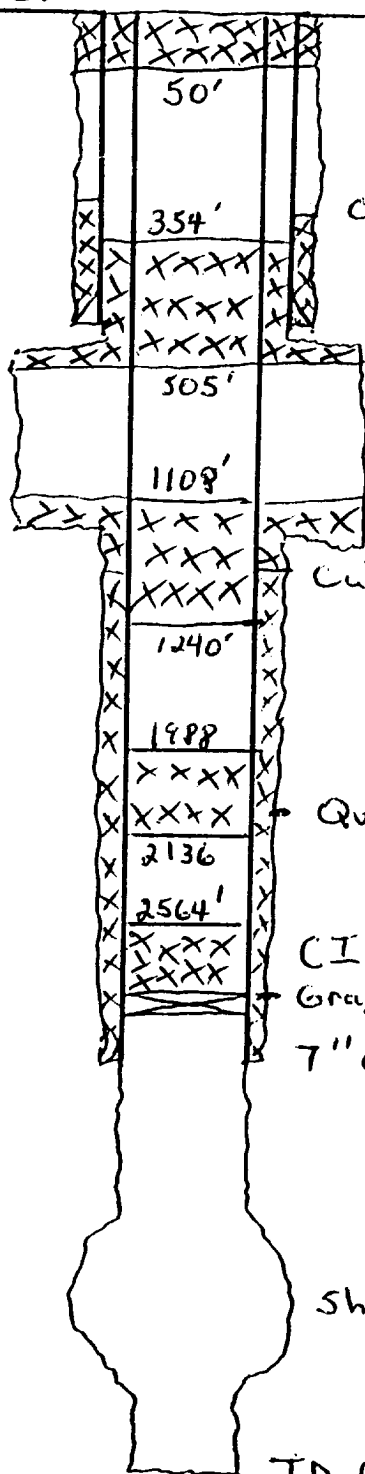
Shot hole 2818' to 2862'

TD @ 3174'

Anadarko

Elev - 3559' GL

Loco Hills "M" Federal #3 4/24/94

After P+A

calculated cement top at 305'

8 5/8" casing to 455' (cemented with 50sx)

Top of salt section at 455'

Bottom of salt section at 1140'

calculated cement top at 1164'

Queen Formation top at 2086'

CIBP set at 2712'

Grayburg Formation top at 2712'

7" casing to 2777' (cemented with 100sx)

BUREAU OF LAND MANAGEMENT
CARLSBAD RESOURCE AREA

Permanent Abandonment of Wells on Federal Lands

Conditions of Approval

1. Approval: Plugging operations shall commence within 90 days from the approval date of plugging procedure.
2. Notification: Contact the appropriated BLM office at least 24 hours prior to the commencing of any plugging operations. For wells in Eddy county call (505) 234-5272; for wells in Lea County call (505) 393-3612.
3. Blowout Preventers: A blowout preventer (BOP), as appropriate, shall be installed before commencing any plugging operation. The minimum BOP requirement is a 2M system for a well not deeper than 9,090 feet; a 3M system for a well not deeper than 13,636 feet; and a 5M system for a well not deeper than 22,727 feet.
4. Mud Requirement: Mud shall be placed between all plugs. Minimum consistency of plugging mud shall be obtained by mixing at the rate of 25 sacks (50 pounds each) of gel per 100 barrels of water. Minimum nine (9) pounds per gallon.
5. Cement Requirement: Sufficient cement shall be used to bring any required plug to the specified depth and length. Any given cement volumes on the proposed plugging procedure are merely estimates and are not final.

Unless otherwise specified in the approved procedure, the cement plug shall consist of either class "C", for up to 7,500 feet of depth, mixed at 14.8 lbs./gal. with 6.3 gallons of fresh water per sack or class "H", for deeper than 7,500 feet plugs, mixed at 16.4 lbs./gal. with 4/3 gallons of fresh water per sack.

6. Dry Hole Marker: All casing shall be cut-off at the base of the cellar or 3 feet below final restored ground level (whichever is deeper). The well bore shall then be capped with a 4-inch pipe, 10-feet in length, 4 feet above ground and embedded in cement. The following information shall be permanently inscribed on the dry hole marker: Well name and number, the name of the operator, the lease serial number, the surveyed location (the quarter-quarter section, section, township and range or other authorized survey designation acceptable to the authorized officer; such as metes and bounds.)

7. Subsequent Plugging Reporting: Within 30 days after plugging work is completed, file one original and five copies of the Subsequent Report of Abandonment, Form 3160-5 to BLM. The report should give in detail the manner in which the plugging work was carried out, the extent (by depths) of cement plugs placed, and the size and location (by depths) of casing left in the well. Show date well was plugged.

Following the submittal and approval of the Subsequent Report of Abandonment, surface restoration conditions of approval will be developed and furnished to you.