

**NEW MEXICO OIL CONSERVATION COMMISSION
WELL LOCATION AND ACREAGE DEDICATION PLAT**

JAN 26 1965

Form C-102
Supersedes C-128
Effective 1-1-65

All distances must be from the outer boundaries of the Section.

O. C. C.

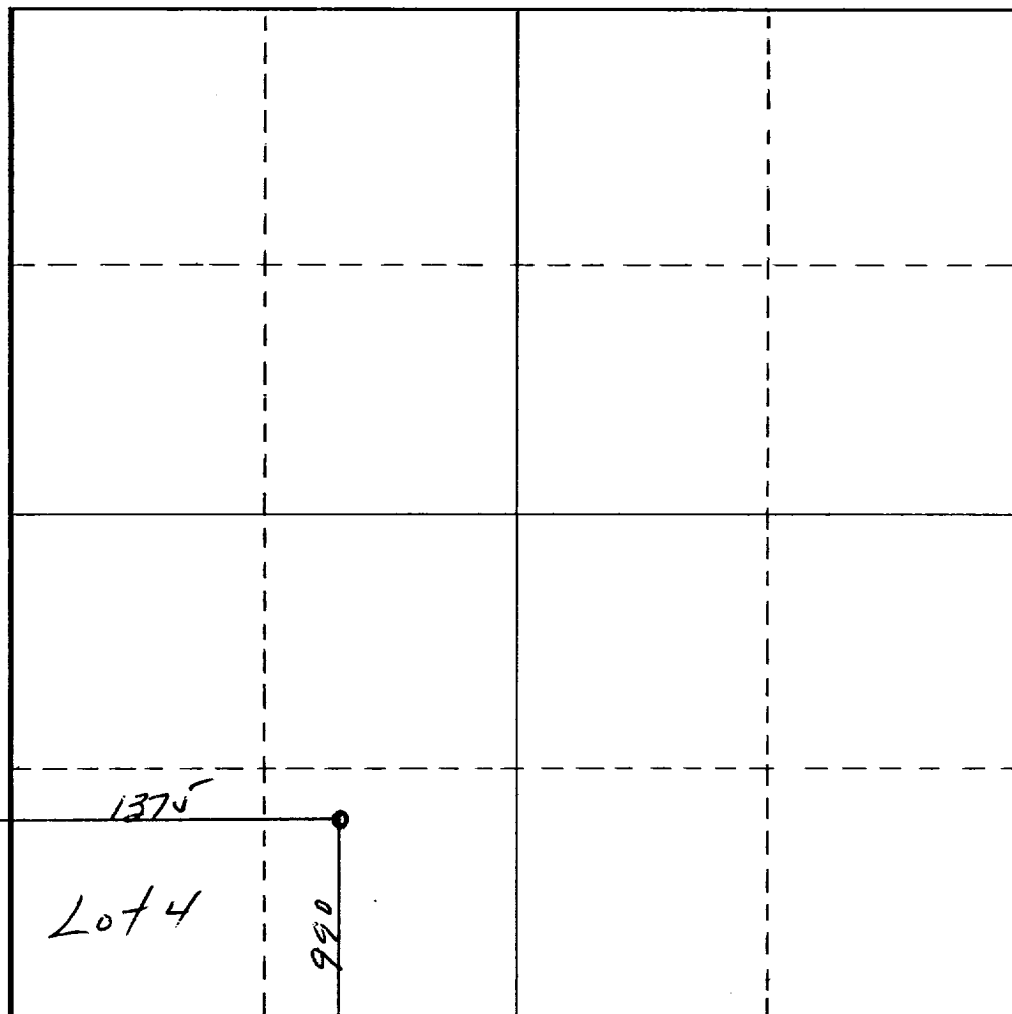
Operator Hugh L. Johnston Sr., et al		Lease Continental		ARTESIA, OFFICE No. 3	
Unit Letter N	Section 30	Township 17 South	Range 29 East	County Eddy	
Actual Footage Location of Well: 990 feet from the South line and 1375 feet from the West line					
Ground Level Elev. 3652	Producing Formation Premier		Pool Under. H. L. Johnston Artesia	Dedicated Acreage: 40 Acres	

1. Outline the acreage dedicated to the subject well by colored pencil or hachure marks on the plat below.
2. If more than one lease is dedicated to the well, outline each and identify the ownership thereof (both as to working interest and royalty).
3. If more than one lease of different ownership is dedicated to the well, have the interests of all owners been consolidated by communitization, unitization, force-pooling, etc?

☐ Yes ☐ No If answer is "yes," type of consolidation _____

If answer is "no," list the owners and tract descriptions which have actually been consolidated. (Use reverse side of this form if necessary.) _____

No allowable will be assigned to the well until all interests have been consolidated (by communitization, unitization, forced-pooling, or otherwise) or until a non-standard unit, eliminating such interests, has been approved by the Commission.



CERTIFICATION

I hereby certify that the information contained herein is true and complete to the best of my knowledge and belief.

Name Nancy King
Position Agent
Company Hugh L. Johnston, Sr., et al
Date January 25, 1965

I hereby certify that the well location shown on this plat was plotted from field notes of actual surveys made by me or under my supervision, and that the same is true and correct to the best of my knowledge and belief.

Date Surveyed January 25, 1965

Registered Professional Engineer and/or Land Surveyor

John A. Markis Jr

Certificate No. **1502**