

UNITED STATES  
DEPARTMENT OF THE INTERIOR  
GEOLOGICAL SURVEY

## APPLICATION FOR PERMIT TO DRILL, DEEPEN, OR PLUG BACK

## 1a. TYPE OF WORK

DRILL ☒DEEPEN ☐PLUG BACK ☐

## b. TYPE OF WELL

OIL  
WELL ☐GAS  
WELL ☐

OTHER

Injection

SINGLE  
ZONE ☐MULTIPLE  
ZONE ☐

## 2. NAME OF OPERATOR

Sinclair Oil &amp; Gas Company

## 3. ADDRESS OF OPERATOR

P. O. Box 1470, Midland, Texas

## 4. LOCATION OF WELL (Report location clearly and in accordance with any State requirements.\*)

At surface

1980' from the South line and 1980' from West line  
Section 8-T17S-R31E, Eddy County., New Mexico

At proposed prod. zone

## 14. DISTANCE IN MILES AND DIRECTION FROM NEAREST TOWN OR POST OFFICE\*

## 15. DISTANCE FROM PROPOSED\*

LOCATION TO NEAREST  
PROPERTY OR LEASE LINE, FT.  
(Also to nearest drig. line, if any)

## 16. NO. OF ACRES IN LEASE

1885

17. NO. OF ACRES ASSIGNED  
TO THIS WELL

40

18. DISTANCE FROM PROPOSED LOCATION\*  
TO NEAREST WELL, DRILLING, COMPLETED,  
OR APPLIED FOR, ON THIS LEASE, FT.

## 19. PROPOSED DEPTH

3700'

## 20. ROTARY OR CABLE TOOLS

Rotary

## 21. ELEVATIONS (Show whether DF, RT, GR, etc.)

## 22. APPROX. DATE WORK WILL START\*

When Approved

## 23.

## PROPOSED CASING AND CEMENTING PROGRAM

SIZE OF HOLE	SIZE OF CASING	WEIGHT PER FOOT	SETTING DEPTH	QUANTITY OF CEMENT
11"	8-5/8" OD	24#	550'	200 Sacks
6-3/4"	4-1/2" OD	9.5#	3700'	200 Sacks

Propose to drill an Injection Well in a Waterflood Project to  
the Grayburg San Andres Formation

RECEIVED

SEP 30 1964

O. & G.  
ARTERIAL OFFICE

IN ABOVE SPACE DESCRIBE PROPOSED PROGRAM: If proposal is to deepen or plug back, give data on present productive zone and proposed new productive zone. If proposal is to drill or deepen directionally, give pertinent data on subsurface locations and measured and true vertical depths. Give blowout preventer program, if any.

## 24.

SIGNED

TITLE Chief Clerk, Prod. Dept.

DATE September 23, 1964

(This space for Federal or State office use)

PERMIT NO.

APPROVAL DATE

APPROVED

TITLE

DATE

CONDITIONS OF APPROVAL, IF ANY:

\*See Instructions On Reverse Side

NUMBER OF COPIES RECEIVED	
DISTRIBUTION	
SANTA FE	
FILE	
U.S.G.S.	
LAND OFFICE	
TRANSPORTER	OIL GAS
PRODUCTION OFFICE	
OPERATOR	

**NEW MEXICO OIL CONSERVATION COMMISSION**  
**WELL LOCATION AND ACREAGE DEDICATION PLAT**  
 SEE INSTRUCTIONS FOR COMPLETING THIS FORM ON THE REVERSE SIDE

FORM C-128  
 Revised 5/1/57

RECEIVED O.C.C.  
 SEP 25 11 35 AM '64

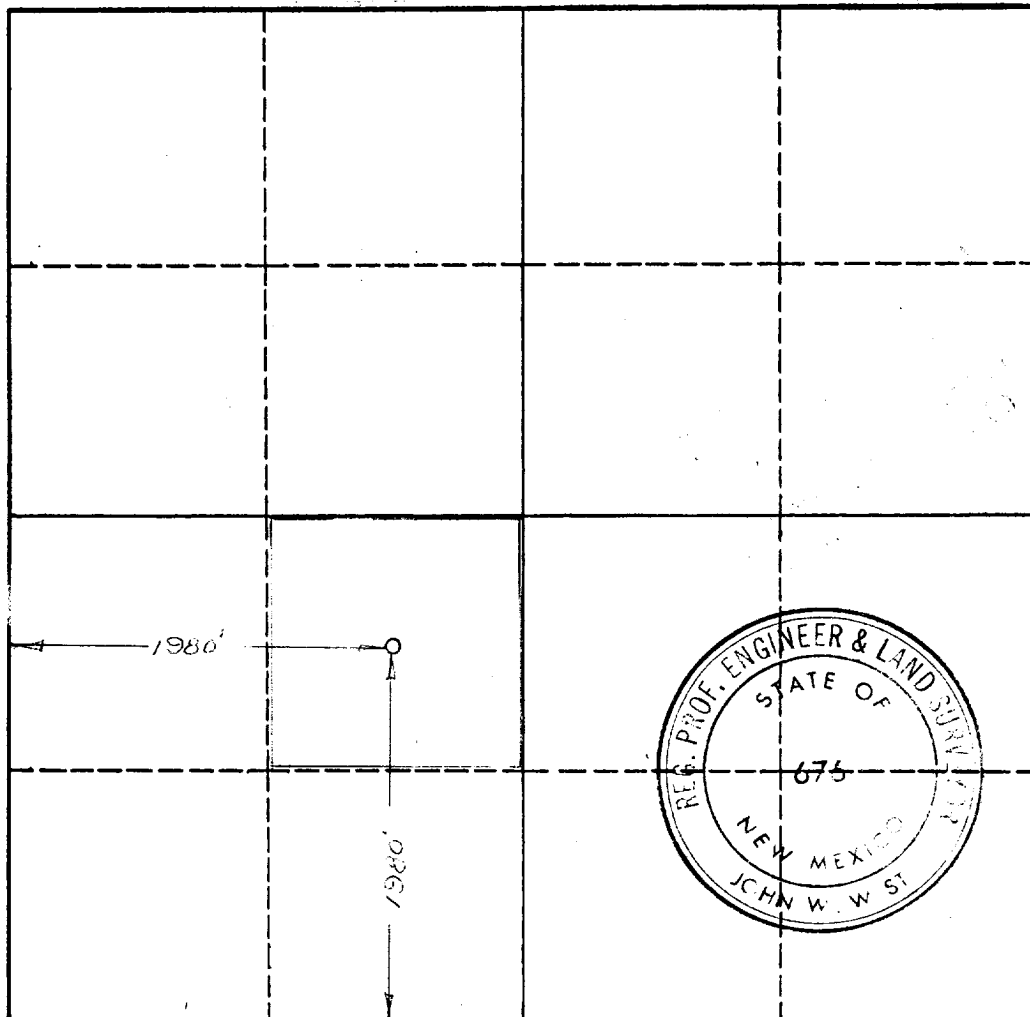
**SECTION A**

Operator <b>Sinclair Oil &amp; Gas Company</b>		Lease <b>J. L. Keel "B"</b>		Well No. <b>29</b>
Unit Letter <b>K</b>	Section <b>8</b>	Township <b>17-S</b>	Range <b>31-E</b>	County <b>Eddy</b>
Actual Footage Location of Well: <b>1980'</b> feet from the <b>South</b> line and <b>1980'</b> feet from the <b>West</b> line				
Ground Level Elev. <b>3713.1</b>	Producing Formation <b>Grayburg San Andres</b>	Pool <b>Grayburg Jackson</b>	Dedicated Acreage: <b>40</b> Acres	

1. Is the Operator the only owner in the dedicated acreage outlined on the plat below? YES ☒ NO \_\_\_\_ . ("Owner" means the person who has the right to drill into and to produce from any pool and to appropriate the production either for himself or for himself and another. (65-3-29 (e) NMSA 1935 Comp.)
2. If the answer to question one is "no," have the interests of all the owners been consolidated by communization agreement or otherwise? YES \_\_\_\_ NO **RECEIVED** "Yes," Type of Consolidation **RECEIVED**
3. If the answer to question two is "no," list all the owners and their respective interests below:

Owner <b>SEP 30 1964</b>	Land Description <b>SEP 28 1964</b>
<b>O. C. C.</b> ARTESIA, OFFICE	<b>O. C. C.</b> ARTESIA, OFFICE

**SECTION B**



**CERTIFICATION**

I hereby certify that the information in SECTION A above is true and complete to the best of my knowledge and belief.

Name <i>[Signature]</i>
Position <b>Div. Clerk Prod. Dept.</b>
Company <b>Sinclair Oil &amp; Gas Co.</b>
Date <b>September 22, 1964</b>

*[Signature]*

I hereby certify that the well location shown on the plat in SECTION B was plotted from field notes of actual surveys made by me or under my supervision, and that the same is true and correct to the best of my knowledge and belief.

Date Surveyed <b>9-12-64</b>
Registered Professional Engineer and/or Land Surveyor <i>[Signature]</i>
Certificate No. <b>676</b>

