

CORRECTED COPY

MEXICO OIL CONSERVATION COMMISS
WELL LOCATION AND ACREAGE DEDICATION PLAT

Form C-102
Supersedes C-128
Effective 1-1-65

All distances must be from the outer boundaries of the Section.

Operator Hugh L. Johnston, Sr., et al			Lease Continental State		Well No. 4
Unit Letter F	Section 30	Township 17 South	Range 29 East	County Eddy	
Actual Footage Location of Well: 2310 feet from the North line and 1911 feet from the West line					
Ground Level Elev. 3645	Producing Formation Premier		Pool Undesignated artesian	Dedicated Acreage: 40 Acres	

- Outline the acreage dedicated to the subject well by colored pencil or hachure marks on the plat below.
- If more than one lease is dedicated to the well, outline each and identify the ownership thereof (both as to working interest and royalty).
- If more than one lease of different ownership is dedicated to the well, have the interests of all owners been consolidated by communitization, unitization, force-pooling, etc?

☐ Yes ☐ No If answer is "yes," type of consolidation _____

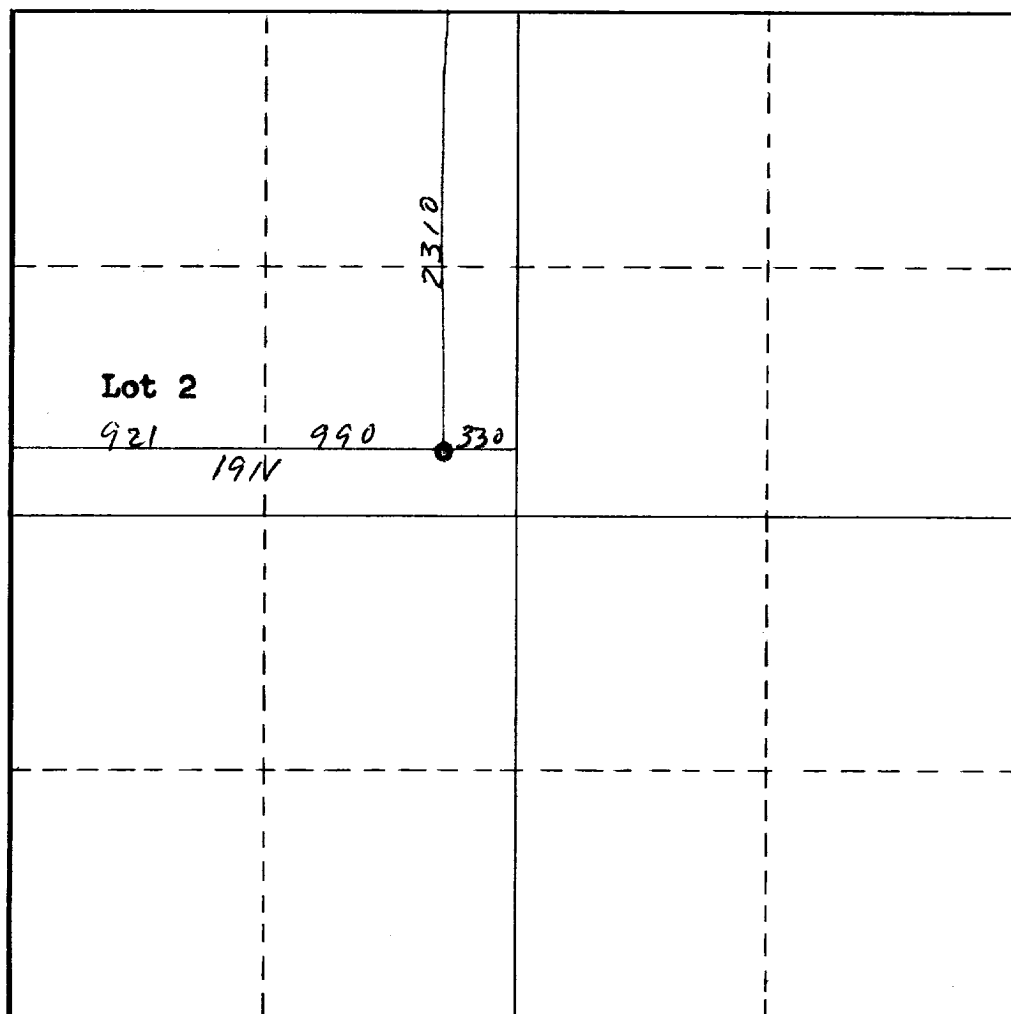
If answer is "no," list the owners and tract descriptions which have actually been consolidated (Use reverse side of this form if necessary.) _____

No allowable will be assigned to the well until all interests have been consolidated (by communitization, unitization, forced-pooling, or otherwise) or until a non-standard unit, eliminating such interests, has been approved by the Commission.

RECEIVED

MAY 13 1965

O. C. C.
ARTESIAN OFFICE



CERTIFICATION

I hereby certify that the information contained herein is true and complete to the best of my knowledge and belief.

Name Haney King
Position Agent

Company
Hugh L. Johnston, Sr., et al

Date
May 13, 1965

I hereby certify that the well location shown on this plat was plotted from field notes of actual surveys made by me or under my supervision, and that the same is true and correct to the best of my knowledge and belief.

Date Surveyed
May 11, 1965

Registered Professional Engineer and/or Land Surveyor

John A. Mattheis Jr
Certificate No.

1502

