

N. M. O. C. C. COPY

SUBMIT IN TRIPLICATE*
(Other instructions on reverse side)Form approved.
Budget Bureau No. 42-R1425.UNITED STATES
DEPARTMENT OF THE INTERIOR
GEOLOGICAL SURVEY

Copy to J. J.

30-015-20078

5. LEASE DESIGNATION AND SERIAL NO.

028731-B

6. IF INDIAN, ALLOTTEE OR TRIBE NAME

7. UNIT AGREEMENT NAME

8. FARM OR LEASE NAME

M. Dodd "B"

9. WELL NO.

24

10. FIELD AND POOL, OR WILDCAT

Square Lake

11. SEC., T., R., M., OR BLK.

AND SURVEY OR AREA

Sec. 14, T-17-S, R-29-E

12. COUNTY OR PARISH

Eddy

13. STATE

N. M.

1a. TYPE OF WORK

DRILL ☒DEEPEN ☐PLUG BACK ☐

b. TYPE OF WELL

OIL
WELL ☒GAS
WELL ☐

OTHER

SINGLE
ZONE ☒MULTIPLE
ZONE ☐

2. NAME OF OPERATOR

Sunray DX Oil Company

3. ADDRESS OF OPERATOR

P. O. Box 1416 - Roswell, New Mexico

4. LOCATION OF WELL (Report location clearly and in accordance with any State requirements.)

At surface

1980' FNL and 1980' FEL

At proposed prod. zone

14. DISTANCE IN MILES AND DIRECTION FROM NEAREST TOWN OR POST OFFICE*

5 Miles West, 1 Mile North - Loco Hill, New Mexico

15. DISTANCE FROM PROPOSED*

LOCATION TO NEAREST
PROPERTY OR LEASE LINE, FT.
(Also to nearest drlg. unit line, if any)

1980

16. NO. OF ACRES IN LEASE

1480

17. NO. OF ACRES ASSIGNED
TO THIS WELL

40

18. DISTANCE FROM PROPOSED LOCATION*

TO NEAREST WELL, DRILLING, COMPLETED,
OR APPLIED FOR, ON THIS LEASE, FT.

1320

19. PROPOSED DEPTH

2700

20. ROTARY OR CABLE TOOLS

Rotary

21. ELEVATIONS (Show whether DF, RT, GR, etc.)

3620 G.L. (Est)

22. APPROX. DATE WORK WILL START*

As soon as approved

23.

PROPOSED CASING AND CEMENTING PROGRAM

SIZE OF HOLE	SIZE OF CASING	WEIGHT PER FOOT	SETTING DEPTH	QUANTITY OF CEMENT
12 1/4	8 5/8"	20	500	Circulate
7 7/8	4 1/2	9.5	2700	200 sx

1. Move in Rotary Rig. Spud
2. Drill 12 1/4" hole to 500'. Set 8 5/8" 20# J-55 to 500' circulate cmt. WOC 18 hrs. and pressure test to 1000#.
3. Drill 7 7/8" hole to 2700'. Run logs. Run 4 1/2" 9.5# csg. to T.D. Cmt w/200 sx. WOC 24 hrs. and pressure test to 1000#.
4. Perforate Metex Zone as determined from log.
5. Stimulate well as needed for production.

IN ABOVE SPACE DESCRIBE PROPOSED PROGRAM: If proposal is to deepen or plug back, give data on present productive zone and proposed new productive zone. If proposal is to drill or deepen directionally, give pertinent data on subsurface locations and measured and true vertical depths. Give blowout preventer program, if any.

24.

SIGNED John Hastings John HastingsTITLE District Engineer

(This space for Federal or State office use)

PERMIT NO.

APPROVAL DATE

APPROVED BY

TITLE

DATE

CONDITIONS OR AMENDMENTS, IF ANY:

AUG - 2 1967

R. L. BEEKMAN

ACTING DISTRICT ENGINEER

RECEIVED
AUG - 2 1967
U. S. GEOLOGICAL SURVEY
ARTESIA, NEW MEXICO

*See Instructions On Reverse Side

NEW MEXICO OIL CONSERVATION COMMISSION
WELL LOCATION AND ACREAGE DEDICATION PLAT

Form C-102
Supersedes C-128
Effective 1-1-65

All distances must be from the outer boundaries of the Section

Operator SUNRAY DX OIL COMPANY		Lease M. DODD B		Well No. 24
Unit Letter G	Section 14	Township 17 SOUTH	Range 29 EAST	County EDDY
Actual Footage Location of Well: 1980 feet from the NORTH line and 1980 feet from the EAST line				
Ground Level Elev. 3620 (EST)	Producing Formation METEX	Pool GRAYBURG JACKSON SAN JUAN	Dedicated Acreage: 10 Acres	

1. Outline the acreage dedicated to the subject well by colored pencil or hatchure marks on the plat below.
2. If more than one lease is dedicated to the well, outline each and identify the ownership thereof (both as to working interest and royalty).
3. If more than one lease of different ownership is dedicated to the well, have the interests of all owners been consolidated by communitization, unitization, force-pooling, etc?

RECEIVED

AUG 3 1967

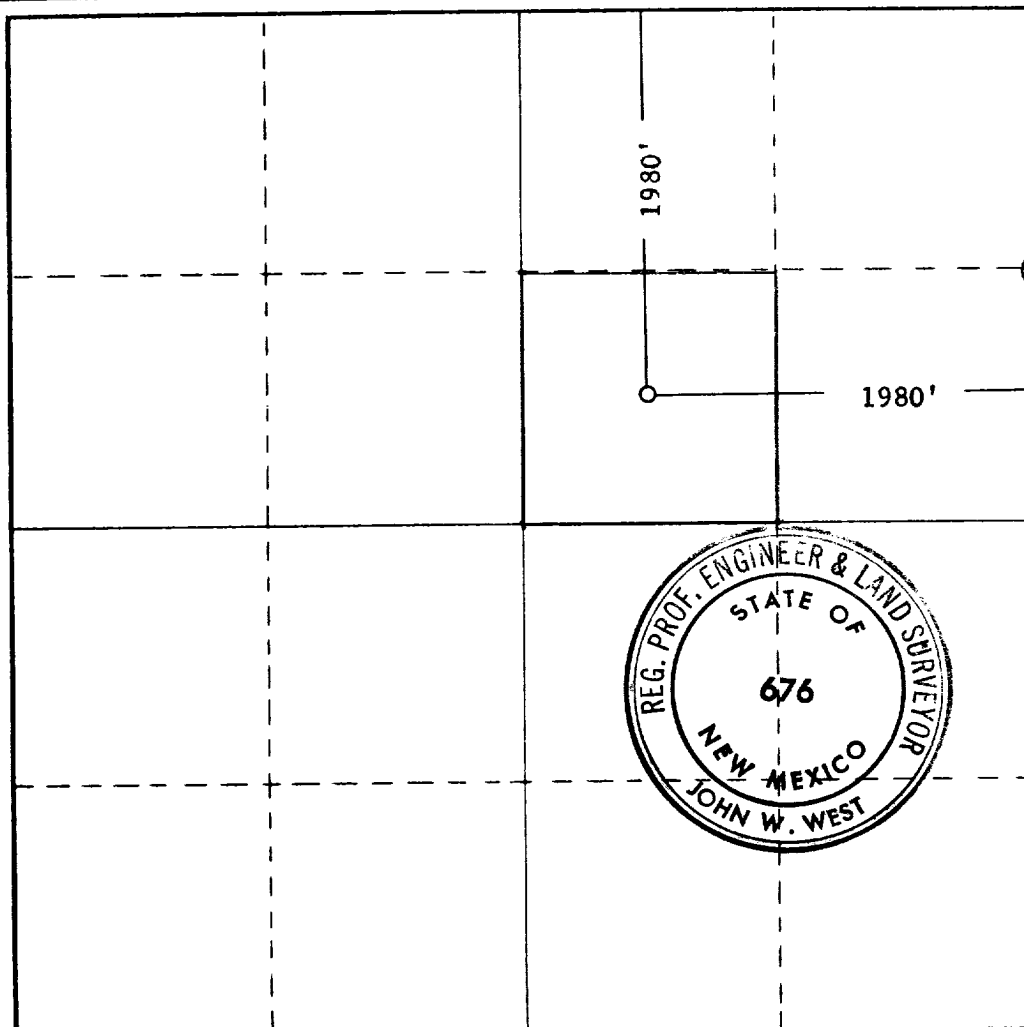
☐ Yes ☐ No If answer is "yes," type of consolidation _____

O. C. C.

ARTESIA, OFFICE

If answer is "no," list the owners and tract descriptions which have actually been consolidated. (Use reverse side of this form if necessary.) _____

No allowable will be assigned to the well until all interests have been consolidated (by communitization, unitization, forced-pooling, or otherwise) or until a non-standard unit, eliminating such interests, has been approved by the Commission.



CERTIFICATION

I hereby certify that the information contained herein is true and complete to the best of my knowledge and belief.

Name John Hastings
Position District Engineer
Company Sunray DX Oil Company
Date August 1, 1967

RECEIVED
AUG - 2 1967
I hereby certify that the well location shown on this plat was obtained from field notes of surveys made by me or under my supervision and that the same is true and correct to the best of my knowledge and belief.
U.S. GEOLOGICAL SURVEY
ARTESIA, NEW MEXICO

Date Surveyed
JULY 29, 1967
Registered Professional Engineer and/or Land Surveyor

John W. West
Certificate No. **676**

0 330 660 990 1320 1650 1980 2310 2640 2000 1500 1000 500

