

UNITED STATES
DEPARTMENT OF THE INTERIOR
GEOLOGICAL SURVEY

Copy to J.

30-015-20081
5. LEASE DESIGNATION AND SERIAL NO.

028731-B

6. IF INDIAN, ALLOTTEE OR TRIBE NAME

7. UNIT AGREEMENT NAME

8. FARM OR LEASE NAME

M. Dodd "B"

9. WELL NO.

27

10. FIELD AND POOL OR WILDCAT
Square Lake11. SEC., T., R., M., OR BLK.
AND SURVEY OR AREA

Sec. 11, T-17-S, R-29-E

12. COUNTY OR PARISH
Eddy13. STATE
N. M.

1a. TYPE OF WORK

DRILL ☒DEEPEN ☐PLUG BACK ☐

b. TYPE OF WELL

OIL
WELL ☒GAS
WELL ☐

OTHER

SINGLE
ZONE ☒MULTIPLE
ZONE ☐

2. NAME OF OPERATOR

Sunray DX Oil Company

3. ADDRESS OF OPERATOR

P. O. Box 1416 - Roswell, New Mexico

4. LOCATION OF WELL (Report location clearly and in accordance with any State requirements.)

At surface

1980' FSL & 660' FWL

At proposed prod. zone

14. DISTANCE IN MILES AND DIRECTION FROM NEAREST TOWN OR POST OFFICE*

5 Miles West, 1 Mile North, Loco Hills, New Mexico

10. DISTANCE FROM PROPOSED*

LOCATION TO NEAREST
PROPERTY OR LEASE LINE, FT.
(Also to nearest drlg. unit line, if any)

660

16. NO. OF ACRES IN LEASE

1480

17. NO. OF ACRES ASSIGNED
TO THIS WELL

40

18. DISTANCE FROM PROPOSED LOCATION*

TO NEAREST WELL, DRILLING, COMPLETED,
OR APPLIED FOR, ON THIS LEASE, FT.

1320

19. PROPOSED DEPTH

2700

20. ROTARY OR CABLE TOOLS

Rotary

21. ELEVATIONS (Show whether DF, RT, GR, etc.)

3620 GL (Est.)

22. APPROX. DATE WORK WILL START*

As soon as approved

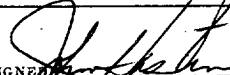
23. PROPOSED CASING AND CEMENTING PROGRAM

SIZE OF HOLE	SIZE OF CASING	WEIGHT PER FOOT	SETTING DEPTH	QUANTITY OF CEMENT
12 1/4	8 5/8"	20	500'	Circulate
7 7/8	4 1/2	9.5	2700	200 sx

1. Move in Rotary Rig. Spud
2. Drill 12 1/4" hole to 500'. Set 8 5/8" 20# J-55 to 500' circulate cmt. WOC 18 hrs. and pressure test to 1000#.
3. Drill 7 7/8" hole to 2700'. Run logs. Run 4 1/2" 9.5# csg. to T.D. Cmt w/200 sx. WOC 24 hrs. and pressure test to 1000#.
4. Perforate Metex Zone as determined from log.
5. Stimulate well as needed for production.

RECEIVED
AUG-21-1967
GEOLOGICAL SURVEY
MEXICO

IN ABOVE SPACE DESCRIBE PROPOSED PROGRAM: If proposal is to deepen or plug back, give data on present productive zone and proposed new productive zone. If proposal is to drill or deepen directionally, give pertinent data on subsurface locations and measured and true vertical depths. Give blowout preventer program, if any.

24.  John Hastings TITLE District Engineer DATE 7-31-67

(This space for Federal or State office use)

PERMIT NO. APPROVAL DATE

APPROVED BY TITLE DATE

APPROVED
AUG-2-1967
R. L. DECKMAN
ACTING DISTRICT ENGINEER

NE EXICO OIL CONSERVATION COMMISSIC
WELL LOCATION AND ACREAGE DEDICATION PLAT

Form C-102
Supersedes C-128
Effective 1-1-65

All distances must be from the outer boundaries of the Section.

Operator SUNRAY DX OIL CO.			Lease M. MARY DODD "B"		Well No. 27
Unit Letter L	Section 11	Township 17 SOUTH	Range 29 EAST	County EDDY	
Actual Footage Location of Well: 1980 feet from the SOUTH line and 660 feet from the WEST line					
Ground Level Elev. 3620	Producing Formation METEX	Pool JACKSON GRAYBURG SAN ANDRES	Dedicated Acreage: 40 Acres		

1. Outline the acreage dedicated to the subject well by colored pencil or hachure marks on the plat below.
2. If more than one lease is dedicated to the well, outline each and identify the ownership thereof (both as to working interest and royalty).
3. If more than one lease of different ownership is dedicated to the well, have the interests of all owners been consolidated by communitization, unitization, force-pooling, etc?

RECEIVED

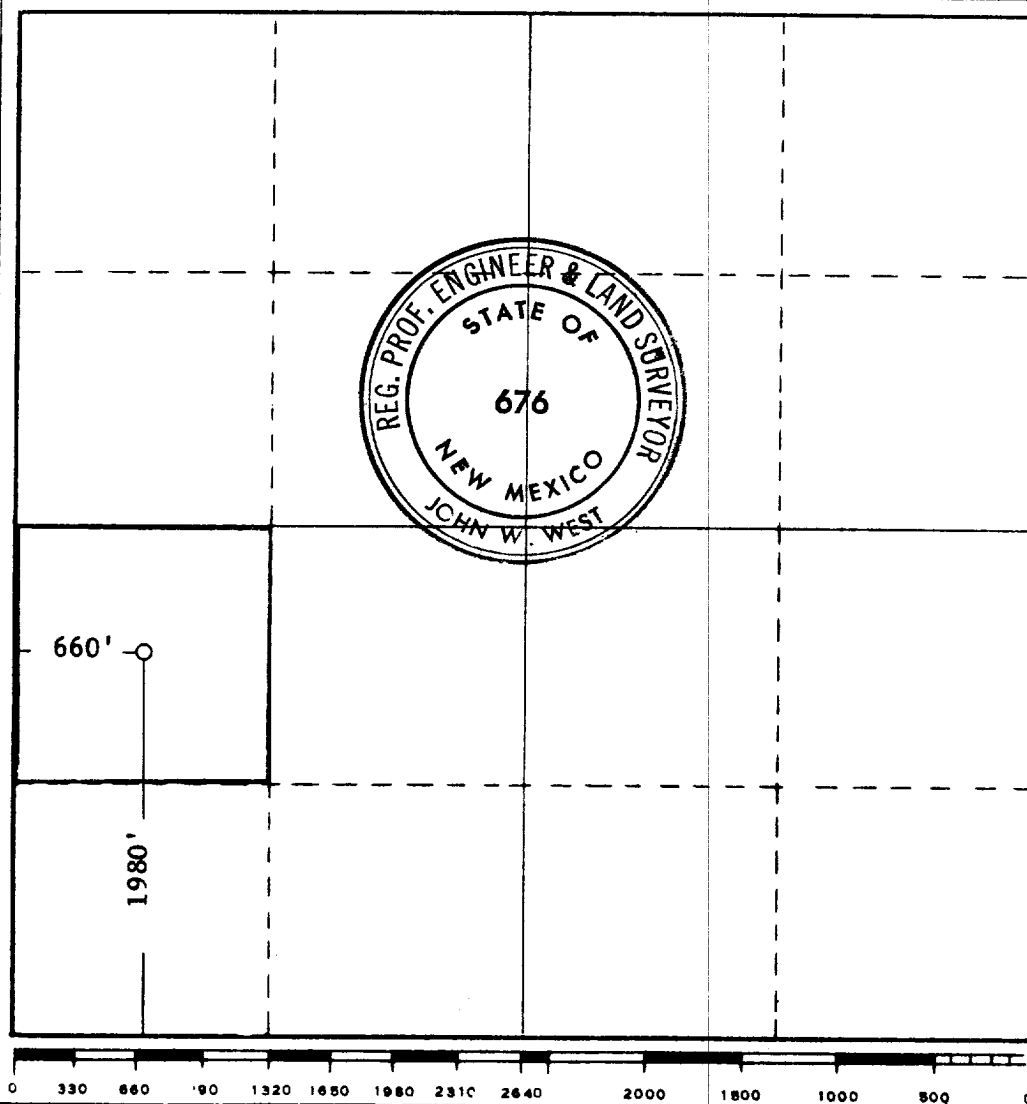
AUG 3 1967

☐ Yes ☐ No If answer is "yes," type of consolidation **O. C. C.**

ARTESIA, OFFICE

If answer is "no," list the owners and tract descriptions which have actually been consolidated. (Use reverse side of this form if necessary.)

No allowable will be assigned to the well until all interests have been consolidated (by communitization, unitization, forced-pooling, or otherwise) or until a non-standard unit, eliminating such interests, has been approved by the Commission.



CERTIFICATION

I hereby certify that the information contained herein is true and complete to the best of my knowledge and belief.

Name **John Hastings**
Position **District Engineer**

Company **Sunray DX Oil Company**

Date **August 1, 1967**

I hereby certify that the well location shown on this plat was plotted from field notes of actual surveys made by me or under my supervision and that the same is true and correct to the best of my knowledge and belief.

RECEIVED
AUG - 2 1967
JUL 28 1967
S. GEOLOGICAL SURVEY
ARTESIA, NEW MEXICO

Date Surveyed

Registered Professional Engineer and/or Land Surveyor

John W. West
Certificate No. **676**

