

SUBMIT IN TRI-CATE\*  
(Other instructions on  
reverse side)Form approved  
Budget Bureau No. 42-R1425.UNITED STATES  
DEPARTMENT OF THE INTERIOR  
GEOLOGICAL SURVEY

## APPLICATION FOR PERMIT TO DRILL, DEEPEN, OR PLUG BACK

## 1a. TYPE OF WORK

DRILL ☒DEEPEN ☐PLUG BACK ☐

## b. TYPE OF WELL

OIL  
WELL ☐GAS  
WELL ☐

OTHER

SINGLE  
ZONE ☐MULTIPLE  
ZONE ☐

## 2. NAME OF OPERATOR

General American Oil Company of Texas

## 3. ADDRESS OF OPERATOR

P. O. Box 416, Loco Hills, New Mexico 88255

## 4. LOCATION OF WELL (Report location clearly and in accordance with any State requirements.)\*

At surface

2310' FSL and 2310' FWL, Section 26, T-17-S, R-29-E

At proposed prod. zone

## 14. DISTANCE IN MILES AND DIRECTION FROM NEAREST TOWN OR POST OFFICE\*

4 miles southwest of Loco Hills, New Mexico

## 10. DISTANCE FROM PROPOSED\*

LOCATION TO NEAREST  
PROPERTY OR LEASE LINE, FT.  
(Also to nearest drlg. unit line, if any)

## 16. NO. OF ACRES IN UNIT

5484

17. NO. OF ACRES ASSIGNED  
TO THIS WELL

40

18. DISTANCE FROM PROPOSED LOCATION\*  
TO NEAREST WELL, DRILLING, COMPLETED,  
OR APPLIED FOR, ON THIS LEASE, FT.

## 19. PROPOSED DEPTH

6550'

## 20. ROTARY OR CABLE TOOLS

Rotary

## 21. ELEVATIONS (Show whether DF, RT, GR, etc.)

3576' (GR)

## 22. APPROX. DATE WORK WILL START\*

3.10/70

## 23.

## PROPOSED CASING AND CEMENTING PROGRAM

SIZE OF HOLE	SIZE OF CASING	WEIGHT PER FOOT	SETTING DEPTH	QUANTITY OF CEMENT
	8 5/8"	24#	1250'	400 sacks
	5 1/2"	15.5#	6550'	650 sacks

FEB 3 1970

We propose to drill Grayburg Deep Unit #7 as an Abo Reef test to approximately 6550'.  
O. G. C.  
ARTESIA, OFFICE

We plan to run 8 5/8" surface casing to 1250'.

If production is obtained in the Abo Reef 5 1/2" casing we will be run to approximately 6550'.  
RECEIVED

JAN 30 1970

U. S. GEOLOGICAL SURVEY  
ARTESIA, NM

IN ABOVE SPACE DESCRIBE PROPOSED PROGRAM: If proposal is to deepen or plug back, give data on present productive zone and proposed new productive zone. If proposal is to drill or deepen directionally, give pertinent data on subsurface locations and measured and true vertical depths. Give blowout preventer program, if any.

## 24.

SIGNED

TITLE

District Superintendent

DATE

January 29, 1970

(This space for Federal or State office use)

PERMIT NO.

APPROVED BY

CONDITIONS OF APPROVAL IF ANY:

R. L. BECKMA  
ACTING DISTRICT SUPERINTENDENTTHIS APPROVAL IS RESCINDED IF OPERATIONS  
ARE NOT COMMENCED WITHIN 3 MONTHS.  
EXPIRES MAY 2 - 1970

DATE

\*See Instructions On Reverse Side

This Abo # is  
an expired  
intent

## Instructions

**General:** This form is designed for submitting proposals to perform certain well operations, as indicated, on all types of lands and leases for appropriate action by either a Federal or a State agency, or both, pursuant to applicable Federal and/or State laws and regulations. Any necessary special instructions concerning the use of this form and the number of copies to be submitted, particularly with regard to local, area, or regional procedures and practices, either are shown below or will be issued by, or may be obtained from, the local Federal and/or State office.

**Item 1:** If the proposal is to redrill to the same reservoir at a different subsurface location or to a new reservoir, use this form with appropriate notations. Consult applicable State or Federal regulations concerning subsequent work proposals or reports on the well.

**Item 4:** If there are no applicable State requirements, locations on Federal or Indian land should be described in accordance with Federal requirements. Consult local State or Federal office for specific instructions.

**Item 14:** Needed only when location of well cannot readily be found by road from the land or lease description. A plat, or plats, separate or on this reverse side, showing the roads to, and the surveyed location of, the well, and any other required information, should be furnished when required by Federal or State agency offices.

**Items 15 and 18:** If well is to be, or has been directionally drilled, give distances for subsurface location of hole in any present or objective production zone.

**Item 22:** Consult applicable Federal or State regulations, or appropriate officials, concerning approval of the proposal before operations are started.

**NEW MEXICO OIL CONSERVATION COMMISSION  
WELL LOCATION AND ACREAGE DEDICATION PLAT**

Form C-102  
Supersedes C-128  
Effective 1-1-65

All distances must be from the outer boundaries of the Section.

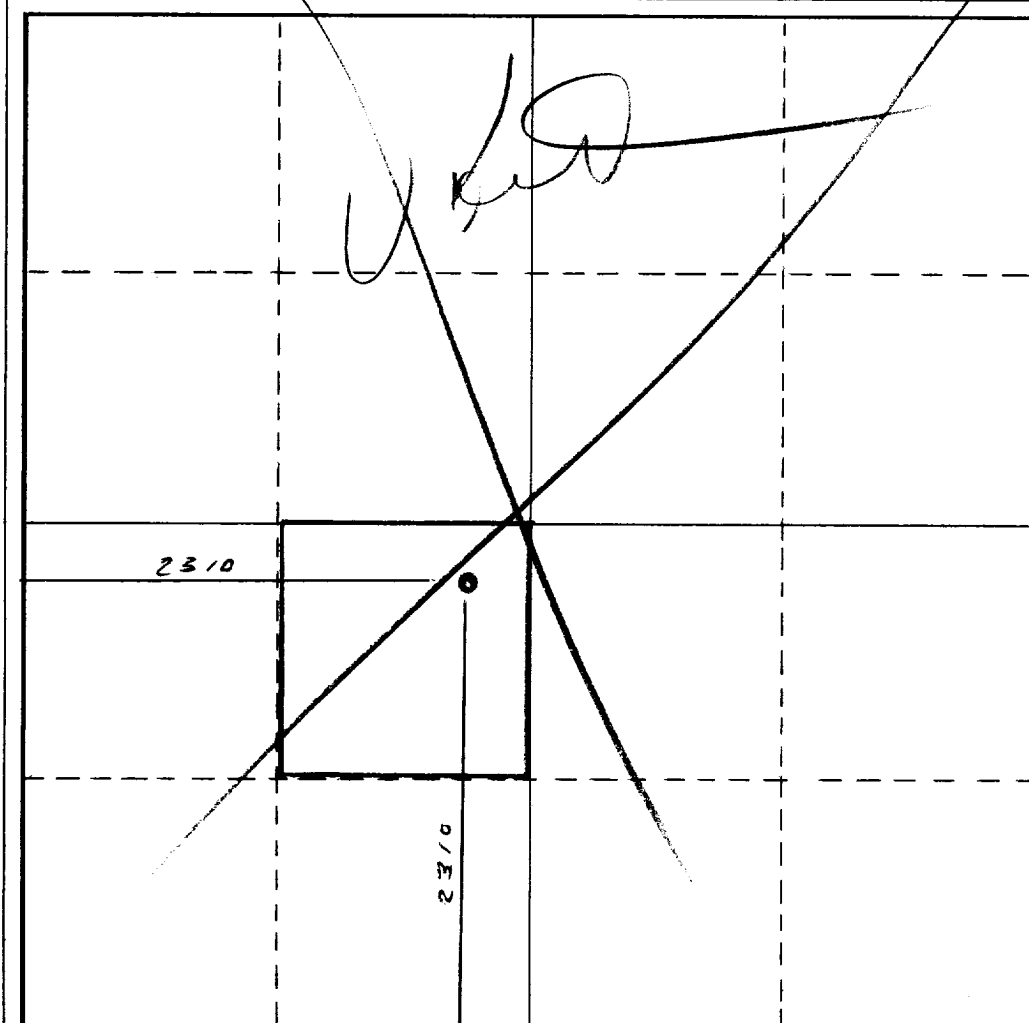
Operator <b>General American Oil Co.</b> <i>8/26/70</i>			Lease <b>Grayburg Deep knit</b>		Well No. <b>7</b>
Unit Letter <b>K</b>	Section <b>26</b>	Township <b>17 South</b>	Range <b>29 East</b>	County <b>Eddy</b>	
Actual Footage Location of Well: <b>2310</b> feet from the <b>South</b> line and <b>2310</b> feet from the <b>West</b> line					
Ground Level Elev. <b>3576</b>	Producing Formation <b>Abe Reef</b>		Pool <b>Wildcat</b>		Dedicated Acreage: <b>40</b> Acres

1. Outline the acreage dedicated to the subject well by colored pencil or hachure marks on the plat below.
2. If more than one lease is dedicated to the well, outline each and identify the ownership thereof (both as to working interest and royalty).
3. If more than one lease of different ownership is dedicated to the well, have the interests of all owners been consolidated by communitization, unitization, force-pooling, etc?

☐ Yes ☐ No If answer is "yes," type of consolidation \_\_\_\_\_ **RECEIVED**

If answer is "no," list the owners and tract descriptions which have actually been consolidated. (Use reverse side of this form if necessary.) \_\_\_\_\_ **FE 2 1970**

No allowable will be assigned to the well until all interests have been consolidated (by communitization, unitization, forced-pooling, or otherwise) or until a non-standard unit, eliminating such interests, has been approved by the Commission.



**CERTIFICATION**

I hereby certify that the information contained herein is true and complete to the best of my knowledge and belief.

*H. E. Hutto*  
Name  
**District Superintendent**  
Position

Company  
**General American Oil Co.**  
Date  
**January 29, 1970**

I hereby certify that the well location shown on this plat was plotted from field notes of actual surveys made by me or under my supervision, and that the same is true and correct to the best of my knowledge and belief.

Date Surveyed  
**January 29, 1970**

Registered Professional Engineer  
and/or Land Surveyor

*John A. Mathis Jr*  
Certificate No.  
**1702**

