

UNITED STATES
DEPARTMENT OF THE INTERIOR
GEOLOGICAL SURVEY

APPLICATION FOR PERMIT TO DRILL, DEEPEN, OR PLUG BACK

1a. TYPE OF WORK

DRILL ☒DEEPEN ☐PLUG BACK ☐

b. TYPE OF WELL

OIL
WELL ☐GAS
WELL ☐

OTHER

SINGLE
ZONE ☐MULTIPLE
ZONE ☐

2. NAME OF OPERATOR

General American Oil Company of Texas

3. ADDRESS OF OPERATOR

P. O. Box 416, Loco Hills, New Mexico 88255

4. LOCATION OF WELL (Report location clearly and in accordance with any State requirements.)*

At surface

1930' FSL and 660' FWL Sec. 13, T-17N, R-29E.

At proposed prod. zone

14. DISTANCE IN MILES AND DIRECTION FROM NEAREST TOWN OR POST OFFICE*

3 miles west of Loco Hills

15. DISTANCE FROM PROPOSED*

LOCATION TO NEAREST
PROPERTY OR LEASE LINE, FT.
(Also to nearest drlg. unit line, if any)

660'

16. NO. OF ACRES IN LEASE

1.00'

18. DISTANCE FROM PROPOSED LOCATION*
TO NEAREST WELL, DRILLING, COMPLETED,
OR APPLIED FOR, ON THIS LEASE, FT.

1520'

19. PROPOSED DEPTH

2580'

17. NO. OF ACRES ASSIGNED
TO THIS WELL

40

20. ROTARY OR CABLE TOOLS

Rotary

21. ELEVATIONS (Show whether DF, RT, GR, etc.)

3621' GL

22. APPROX. DATE WORK WILL START*

4-27-71

23.

PROPOSED CASING AND CEMENTING PROGRAM

SIZE OF HOLE	SIZE OF CASING	WEIGHT PER FOOT	SETTING DEPTH	QUANTITY OF CEMENT
12-1/4"	8-5/8"	20#	415'	100 Sacks
7-7/8"	4-1/2"	9.5#	2580'	225 Sacks

We propose to drill this well through the Metex
Sand and set 4-1/2" casing, sand frac and complete
as a producing well.

RECEIVED

APR 27 1971

D. C. C.
ARTESIA OFFICE

RECEIVED

APR 26 1971

U. S. GEOLOGICAL SURVEY
ARTESIA, NEW MEXICO

IN ABOVE SPACE DESCRIBE PROPOSED PROGRAM: If proposal is to deepen or plug back, give data on present productive zone and proposed new productive zone. If proposal is to drill or deepen directionally, give pertinent data on subsurface locations and measured and true vertical depths. Give blowout preventer program, if any.

24.

SIGNED

TITLE District Superintendent

DATE April 23, 1971

(This space for Federal or State office use)

PERMIT NO.

APPROVAL DATE

APPROVED
APR 26 1971
R. L. BEEKMAN
ACTING DISTRICT SUPERINTENDENTTITLE IF OPERATIONS
ARE NOT COMMENCED WITHIN 3 MONTHS.

DATE

THIS APPROVAL IS EXTENDED IF OPERATIONS
ARE NOT COMMENCED WITHIN 3 MONTHS.
EXPIRES JUL 26 1971
*See Instructions On Reverse Side

N MEXICO OIL CONSERVATION COMMISS.
WELL LOCATION AND ACREAGE DEDICATION PLAT

Form C-102
Supersedes C-128
Effective 1-1-65

All distances must be from the outer boundaries of the Section.

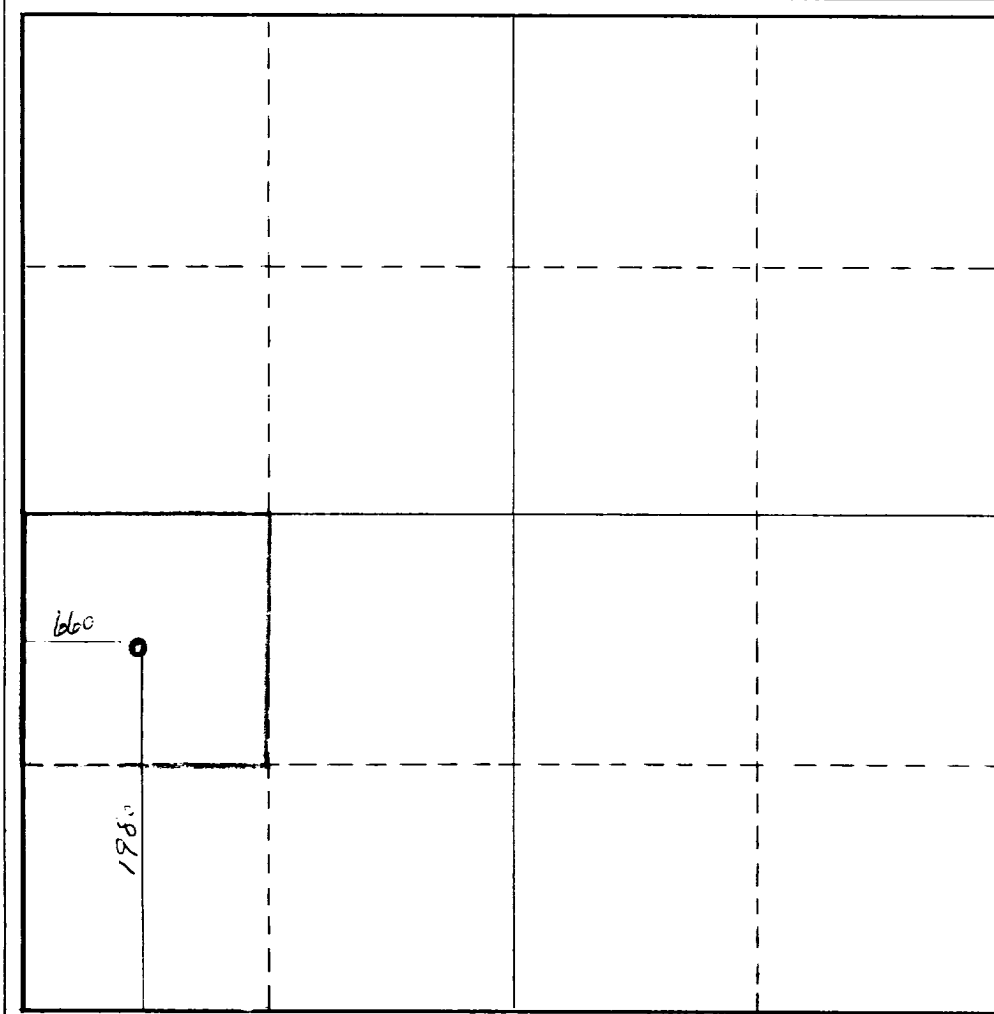
Operator Gen. American Oil Co. of Texas			Lease Keely 3		Well No. 8-50
Unit Letter L	Section 13	Township 17S	Range 29E	County Eddy	
Actual Footage Location of Well: 1980 feet from the South line and 660 feet from the West line					
Ground Level Elev. 3621	Producing Formation Beter Sand		Pool Grayburg-Jackson		Dedicated Acreage: 40 Acres

1. Outline the acreage dedicated to the subject well by colored pencil or hachure marks on the plat below.
2. If more than one lease is dedicated to the well, outline each and identify the ownership thereof (both as to working interest and royalty).
3. If more than one lease of different ownership is dedicated to the well, have the interests of all owners been consolidated by communitization, unitization, force-pooling, etc?

☐ Yes ☐ No If answer is "yes," type of consolidation _____

If answer is "no," list the owners and tract descriptions which have actually been consolidated. (Use reverse side of this form if necessary.) _____

No allowable will be assigned to the well until all interests have been consolidated (by communitization, unitization, forced-pooling, or otherwise) or until a non-standard unit, eliminating such interests, has been approved by the Commission.



CERTIFICATION

I hereby certify that the information contained herein is true and complete to the best of my knowledge and belief.

W. E. Walter
Name
W. E. Walter
Position
District Superintendent
Company
General American Oil Co. of Texas
Date
April 23, 1971

RECEIVED
APR 23 1971
I hereby certify that the well location shown on this plat was plotted from field notes of a well survey made by me or under my supervision, and that the same is correct to the best of my knowledge.
U.S. GEOLOGICAL SURVEY
ARTESIA, NEW MEXICO

Date Surveyed
April 19, 1971
Registered Professional Engineer and/or Land Surveyor
John A. Wataugh

Certificate No.

1502

