

RECEIVED

NEW MEXICO OIL CONSERVATION COMMISSION

WELL LOCATION AND ACREAGE DEDICATION PLAT

NOV 17 1972

All distances must be from the outer boundaries of the Section.

Form C-102
Supersedes C-128
Effective 1-1-65

Operator Anadarko Production Company		Lease Loco Hills B Federal		Well No. 1-9
Unit Letter P	Section 9	Township 17-S	Range 30-E	County Eddy
Actual Footage Location of Well: 660 feet from the South line and 660 feet from the East line				
Ground Level Elev. 3685	Producing Formation Seven Rivers	Pool associated North Fren Yates - Seven Rivers	Dedicated Acreage: 160 Acres	

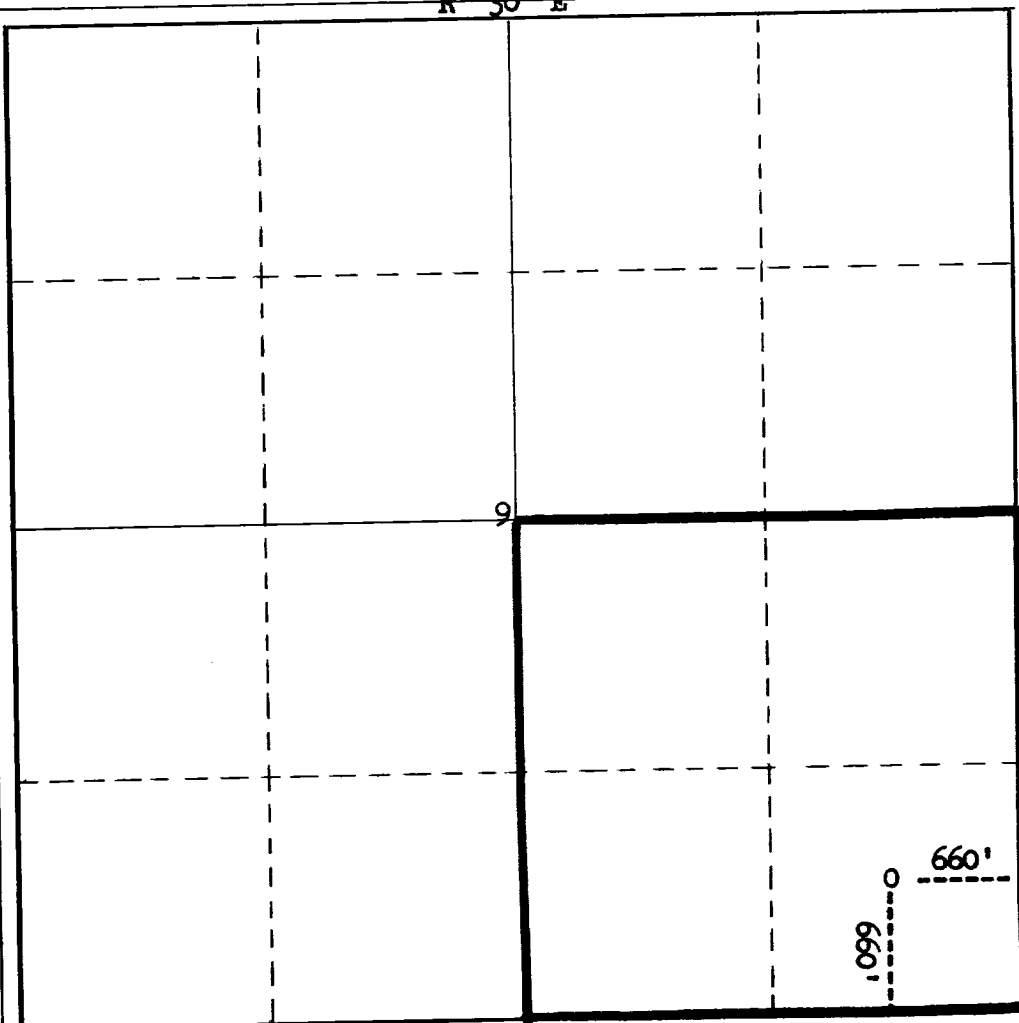
- Outline the acreage dedicated to the subject well by colored pencil or hachure marks on the plat below.
- If more than one lease is dedicated to the well, outline each and identify the ownership thereof (both as to working interest and royalty).
- If more than one lease of different ownership is dedicated to the well, have the interests of all owners been consolidated by communitization, unitization, force-pooling, etc?

☐ Yes ☐ No If answer is "yes," type of consolidation _____

If answer is "no," list the owners and tract descriptions which have actually been consolidated. (Use reverse side of this form if necessary.) _____

No allowable will be assigned to the well until all interests have been consolidated (by communitization, unitization, forced-pooling, or otherwise) or until a non-standard unit, eliminating such interests, has been approved by the Commission.

R 30 E

T
1
7
S

CERTIFICATION

I hereby certify that the information contained herein is true and complete to the best of my knowledge and belief.

Original Signed By
D. R. Layton

Name

D. R. Layton

Position

Area Supervisor

Company

Anadarko Production Company

Date

November 1, 1972

I hereby certify that the well location shown on this plat was plotted from field notes of actual surveys made by me or under my supervision, and that the same is true and correct to the best of my knowledge and belief.

See Original

Date Surveyed

11-8-72Registered Professional Engineer
and/or Land Surveyor**James H. Brown**

Certificate No.

542