

UNITED STATES
DEPARTMENT OF THE INTERIOR
GEOLOGICAL SURVEY

APPLICATION FOR PERMIT TO DRILL, DEEPEN, OR PLUG BACK

1a. TYPE OF WORK

DRILL ☒DEEPEN ☐PLUG BACK ☐

b. TYPE OF WELL

OIL
WELL ☒GAS
WELL ☐OTHER ☐SINGLE
ZONE ☒MULTIPLE
ZONE ☐

2. NAME OF OPERATOR

Texas American Oil Corporation

3. ADDRESS OF OPERATOR

1012 Midland Savings Bldg., Midland, Texas 79701

4. LOCATION OF WELL (Report location clearly and in accordance with any State requirements.*)

At surface

660' FNL & 660' FEL, Sec. 17-17S-30E

At proposed prod. zone

14. DISTANCE IN MILES AND DIRECTION FROM NEAREST TOWN OR POST OFFICE*

1 mile north Loco Hills

15. DISTANCE FROM PROPOSED*

LOCATION TO NEAREST
PROPERTY OR LEASE LINE, FT.
(Also to nearest drlg. unit line, if any)

660

16. NO. OF ACRES IN LEASE

80

18. DISTANCE FROM PROPOSED LOCATION*

TO NEAREST WELL, DRILLING, COMPLETED,
OR APPLIED FOR, ON THIS LEASE, FT.

-

19. PROPOSED DEPTH

3300

17. NO. OF ACRES ASSIGNED
TO THIS WELL

40

20. ROTARY OR CABLE TOOLS

Rotary

21. ELEVATIONS (Show whether DF, RT, GR, etc.)

3679 GR

22. APPROX. DATE WORK WILL START*

December 15, 1971

23.

PROPOSED CASING AND CEMENTING PROGRAM

SIZE OF HOLE	SIZE OF CASING	WEIGHT PER FOOT	SETTING DEPTH	QUANTITY OF CEMENT
11"	8-5/8"	20#	500	150 sx.
7-7/8"	4-1/2"	9.50#	3300	450 sx.

IN ABOVE SPACE DESCRIBE PROPOSED PROGRAM: If proposal is to deepen or plug back, give data on present productive zone and proposed new productive zone. If proposal is to drill or deepen directionally, give pertinent data on subsurface locations and measured and true vertical depths. Give blowout preventer program, if any.

24.

SIGNED

Roy K. Valla

TITLE

Production Manager

DATE

November 23, 1971

(This space for Federal or State office use)

PERMIT NO.

APPROVAL DATE

DEC 8 1971

APPROVED BY

J. C. C. (Signature)

TITLE

DISTRICT ENGINEER

DATE

DEC 8 1971

CONDITIONS OF APPROVAL, IF ANY:

MEXICO OIL CONSERVATION COMMISS
WELL LOCATION AND ACREAGE DEDICATION PLAT

Form C-102
Supersedes C-128
Effective 1-1-65

All distances must be from the outer boundaries of the Section.

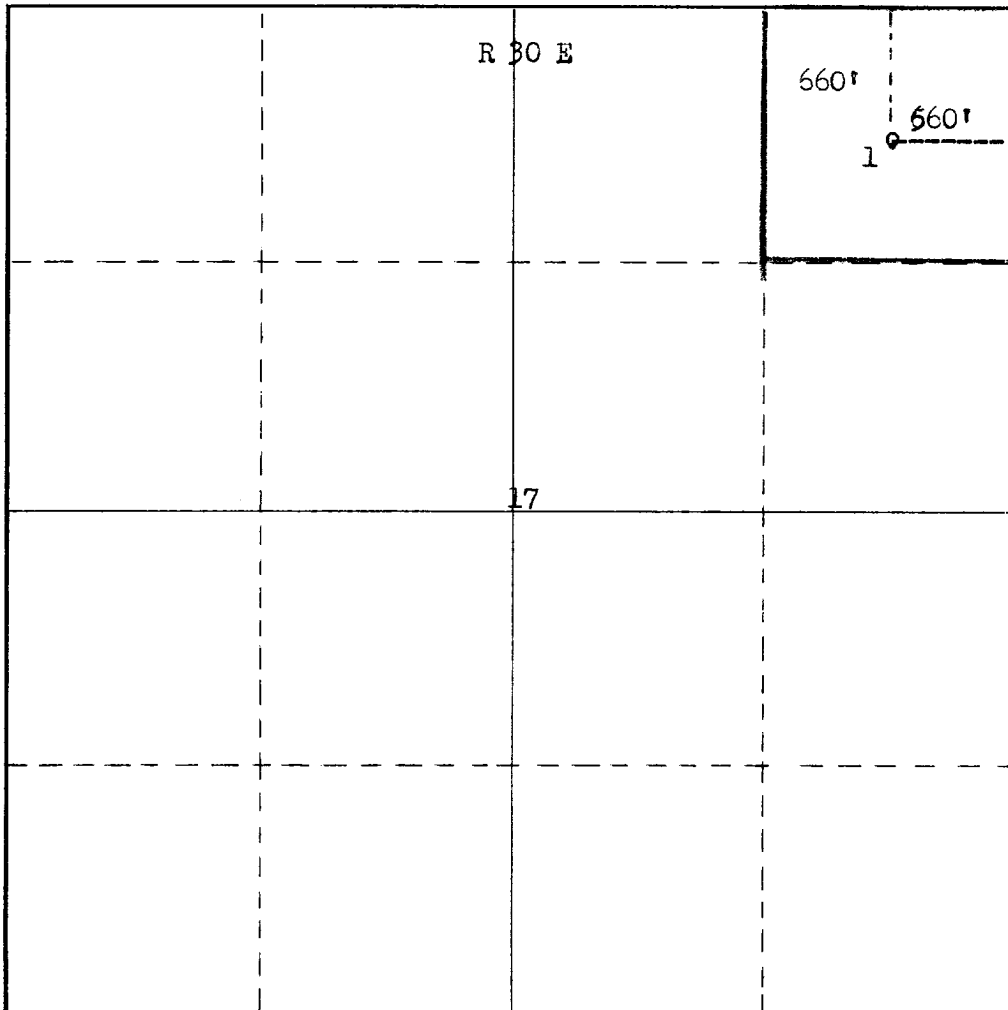
Operator Texas American Oil Corporation			Lease Collier Federal		Well No. 1
Unit Letter A	Section 17	Township 17 South	Range 30 East	County Eddy	
Actual Footage Location of Well: 660 feet from the North line and 660 feet from the East line					
Ground Level Elev. 3679	Producing Formation Grayburg Jackson		Pool Grayburg Jackson		Dedicated Acreage: 40 Acres

1. Outline the acreage dedicated to the subject well by colored pencil or hachure marks on the plat below.
2. If more than one lease is dedicated to the well, outline each and identify the ownership thereof (both as to working interest and royalty).
3. If more than one lease of different ownership is dedicated to the well, have the interests of all owners been consolidated by communitization, unitization, force-pooling, etc?

☐ Yes ☐ No If answer is "yes," type of consolidation _____

If answer is "no," list the owners and tract descriptions which have actually been consolidated. (Use reverse side of this form if necessary.) _____

No allowable will be assigned to the well until all interests have been consolidated (by communitization, unitization, forced-pooling, or otherwise) or until a non-standard unit, eliminating such interests, has been approved by the Commission.



CERTIFICATION

I hereby certify that the information contained herein is true and complete to the best of my knowledge and belief.

Name Roy K. Valla
Position Production Manager
Company Texas American Oil Corp.
Date November 23, 1971

RECEIVED
NOV 24 1971
I hereby certify that the location of the well was plotted on field notes of actual surveys made by me or under my supervision, and that the same is true and correct to the best of my knowledge and belief.
JAMES H. BROWN

Date Surveyed
November 9, 1971

Registered Professional Engineer and/or Land Surveyor

James H. Brown
Certificate No. 542

T
17
S

DRIVER

ITOLASVON

FRANCIS J. JONES
DRIVER