

APPROVAL VALID
FOR 90 DAYS UNLESS
DRILLING COMMENCED,
EXPIRES 3-14-72

MEXICO OIL CONSERVATION COMMISS
WELL LOCATION AND ACREAGE DEDICATION PLAT

Form C-102
 Supersedes C-128
 Effective 1-1-65

All distances must be from the outer boundaries of the Section.

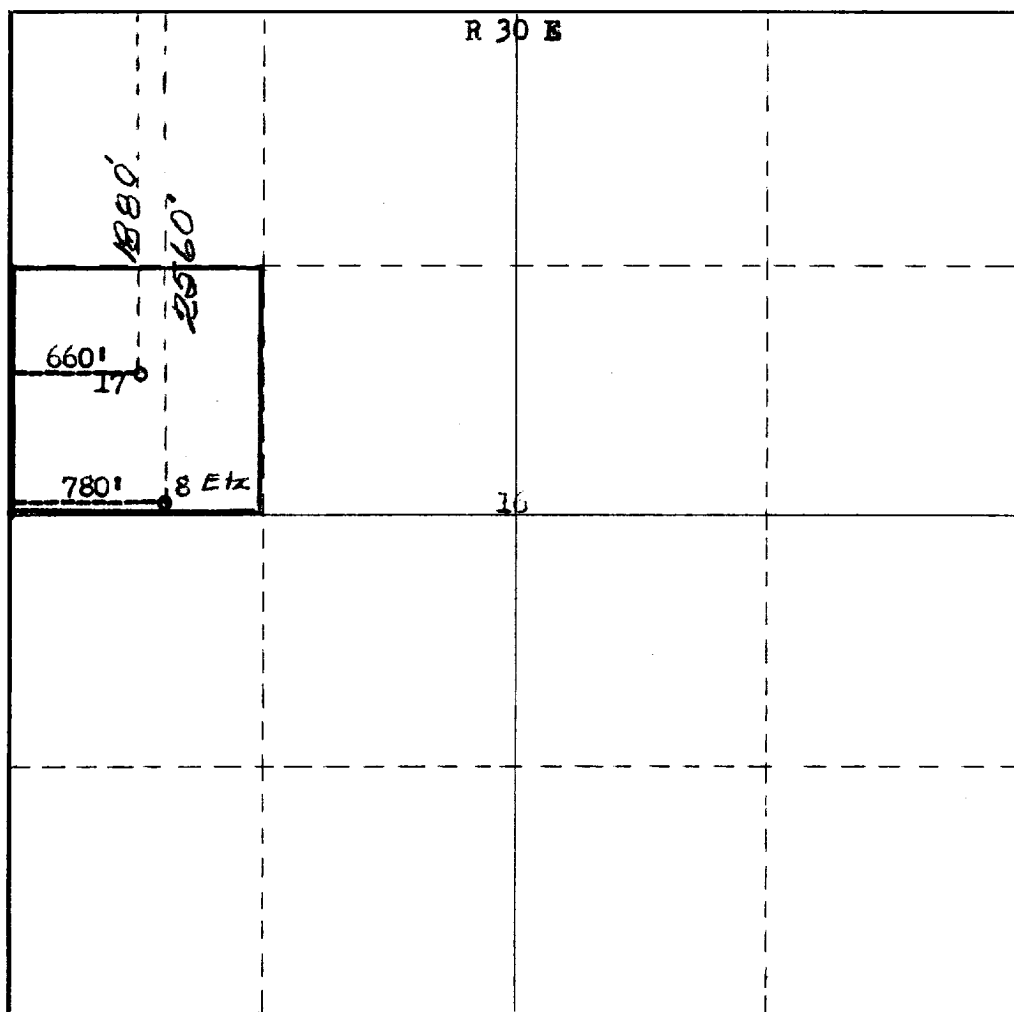
Operator TEXAS AMERICAN OIL CORPORATION			Lease ETZ C State		Well No. 17
Unit Letter E	Section 16	Township 17 South	Range 30 East	County Eddy	
Actual Footage Location of Well: 1880 feet from the North line and 660 feet from the West line					
Ground Level Elev. 3682	Producing Formation SA Grayburg Jackson		Pool Grayburg Jackson		Dedicated Acreage: 40 Acres

1. Outline the acreage dedicated to the subject well by colored pencil or hachure marks on the plat below.
2. If more than one lease is dedicated to the well, outline each and identify the ownership thereof (both as to working interest and royalty).
3. If more than one lease of different ownership is dedicated to the well, have the interests of all owners been consolidated by communitization, unitization, force-pooling, etc?

☐ Yes ☐ No If answer is "yes," type of consolidation _____

If answer is "no," list the owners and tract descriptions which have actually been consolidated. (Use reverse side of this form if necessary.) _____

No allowable will be assigned to the well until all interests have been consolidated (by communitization, unitization, forced-pooling, or otherwise) or until a non-standard unit, eliminating such interests, has been approved by the Commission.



CERTIFICATION

I hereby certify that the information contained herein is true and complete to the best of my knowledge and belief.

Name **Roy K. Valla**
 Position **Production Manager**
 Company **Texas American Oil Corp.**
 Date **December 10, 1971**

I hereby certify that the well location shown on this plat was plotted from field notes of actual surveys made by me or under my supervision, and that the same is true and correct to the best of my knowledge and belief.



Date Surveyed **November 24, 1971**
 Registered Professional Engineer and/or Land Surveyor

James H. Brown
 Certificate No. **542**

T
17
S

TEXAS AMERICAN OIL CORPORATION



300 WEST WALL, SUITE 1012 MIDLAND, TEXAS 79701 915-683-4811

December 10, 1971

RECEIVED

DEC 14 1971

O. C. C.
ARTESIA, OFFICE

Mr. W. A. Gressett
Supervisor and Oil and Gas Inspector
Oil Conservation Commission
Drawer DD
Artesia, New Mexico 88210

Dear Mr. Gressett:

The location of Texas American Oil Corporation's Etz C State, No. 8, as determined November 9, 1971, by Mr. James H. Brown, Land Surveyor, was found to be 2560' FNL and 780' FWL, Section 16-T17S-R 30E, Eddy County, New Mexico.

This well location, if shown different on other records, is incorrect.

The attached surveyor's plat locates the No. 17 Etz C State well 1880' FNL and 660' FWL or 100' North of a Southern Union Gas line.

Yours, very truly,

Roy K. Valla
Roy K. Valla

Production Manager

RKV:pb