

UNITED STATES
DEPARTMENT OF THE INTERIOR
GEOLOGICAL SURVEY

APPLICATION FOR PERMIT TO DRILL, DEEPEN, OR PLUG BACK

1a. TYPE OF WORK

DRILL ☒DEEPEN ☐PLUG BACK ☐

b. TYPE OF WELL

OIL
WELL ☒GAS
WELL ☐OTHER ☐SINGLE
BONE ☐MULTIPLE
BONE ☐

2. NAME OF OPERATOR

General American Oil Company of Texas

3. ADDRESS OF OPERATOR

P. O. Box 416

4. LOCATION OF WELL (Report location clearly and in accordance with any State requirements.)*

At surface 1980' FNL and 660' FEL, Sec. 30, T17S, R30E

At proposed prod. zone

14. DISTANCE IN MILES AND DIRECTION FROM NEAREST TOWN OR POST OFFICE*

1-1/2 miles west of Loco Hills, N. M.

16. DISTANCE FROM PROPOSED
LOCATION TO NEAREST
PROPERTY OR LEASE LINE, FT.

(Also to nearest drig. unit line, if any) 660'

18. NO. OF ACRES IN LEASE

1115

17. NO. OF ACRES ASSIGNED
TO THIS WELL

40

18. DISTANCE FROM PROPOSED LOCATION*
TO NEAREST WELL, DRILLING, COMPLETED,
OR APPLIED FOR, ON THIS LEASE, FT.

1320'

19. PROPOSED DEPTH

3350'

20. ROTARY OR CABLE TOOLS

Rotary

21. ELEVATIONS (Show whether DF, RT, GR, etc.)

3585'

23.

PROPOSED CASING AND CEMENTING PROGRAM

SIZE OF HOLE	SIZE OF CASING	WEIGHT PER FOOT	SETTING DEPTH	QUANTITY OF CEMENT
12-1/4"	8-5/8"	20#	500'	100 Sacks
7-7/8"	4-1/2"	9.5#	3350'	400 Sacks

We propose to drill this well to 3350' and complete in the Grayburg and San Andres. All zones indicating porosity will be acidized or sand fraced.

Mud Program: Water and native mud. Will mud up 100' from T.D. to clean hole for logging. A 10" 3,000# blowout preventer will be used in drilling this well.

ILLEGIBLE

VED

IN ABOVE SPACE DESCRIBE PROPOSED PROGRAM: If proposal is to deepen or plug back, give data on present productive zone and proposed new productive zone. If proposal is to drill or deepen directionally, give pertinent data on subsurface locations and measured and true vertical depths. Give blowout preventer program, if any.

24.

SIGNED

H. E. Walker

TITLE District Superintendent

DATE May 2, 1972

(This space for Federal or State office use)

PERMIT NO.

APPROVAL DATE

DATE

APPROVED BY
CONDITIONS OF APPROVAL, IF ANY:

TITLE

APPROVED
MAY - 2 1972R. L. BECKMAN
ACTING DISTRICT ENGINEER

THIS APPROVAL IS RECORDED IF OPERATIONS
ARE NOT COMMENCED WITHIN 3 MONTHS.
EXPIRES
AUG - 9 1972

*See Instructions On Reverse Side

NEW MEXICO OIL CONSERVATION COMMISSION
WELL LOCATION AND ACREAGE DEDICATION PLAT

RECEIVED

Form C-102
Supersedes C-128
Effective 1-1-65

MAY 10 1972

All distances must be from the outer boundaries of the Section.

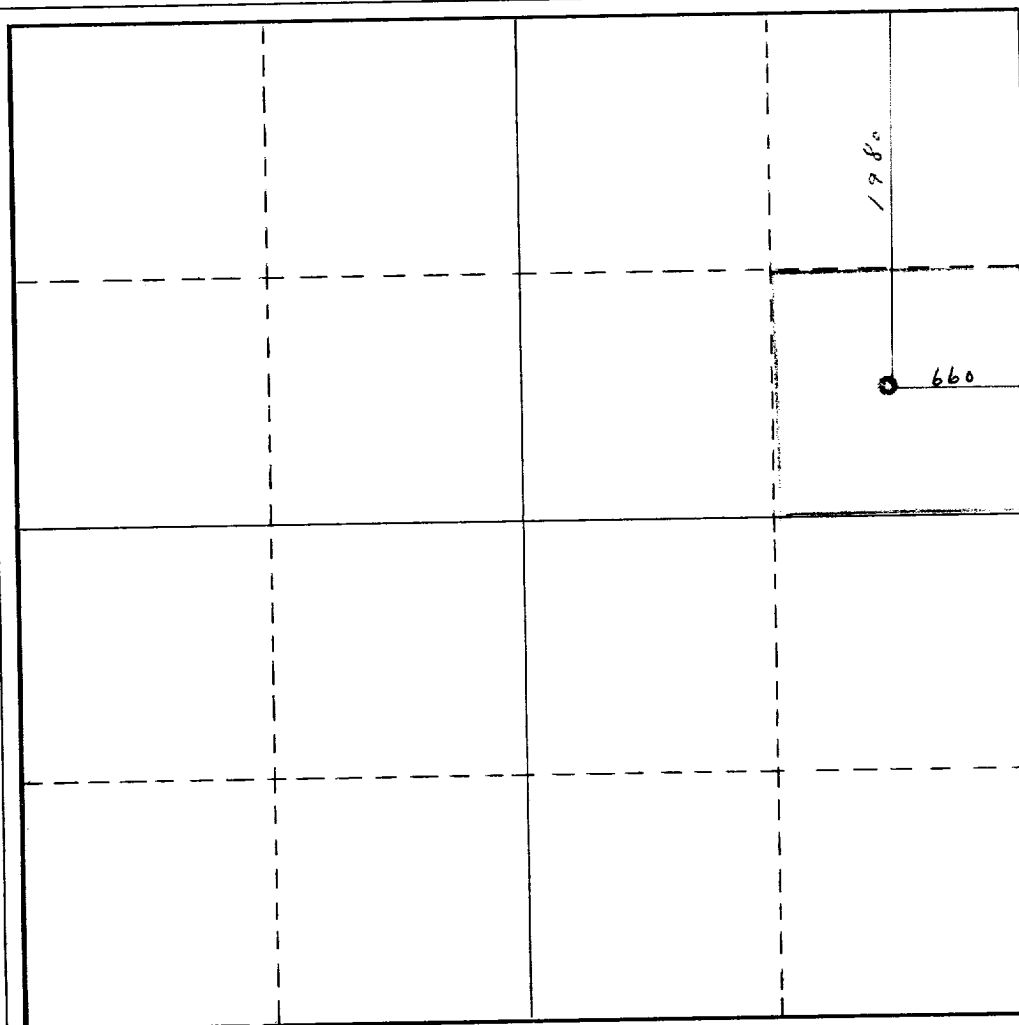
Operator General Amer. Oil Co. of Texas			Lease Burch C		Well No. O. C. C. 426
Unit Letter -E- H	Section 30	Township 17 South	Range 30 East	County Eddy	
Actual Footage Location of Well: 1980 feet from the North line and 660 feet from the East line					
Ground Level Elev. 3585	Producing Formation Grayburg & San Andres		Pool Grayburg-Jackson		Dedicated Acreage: 40 Acres

1. Outline the acreage dedicated to the subject well by colored pencil or hachure marks on the plat below.
2. If more than one lease is dedicated to the well, outline each and identify the ownership thereof (both as to working interest and royalty).
3. If more than one lease of different ownership is dedicated to the well, have the interests of all owners been consolidated by communitization, unitization, force-pooling, etc?

☐ Yes ☐ No If answer is "yes," type of consolidation _____

If answer is "no," list the owners and tract descriptions which have actually been consolidated. (Use reverse side of this form if necessary.) _____

No allowable will be assigned to the well until all interests have been consolidated (by communitization, unitization, forced-pooling, or otherwise) or until a non-standard unit, eliminating such interests, has been approved by the Commission.



CERTIFICATION

I hereby certify that the information contained herein is true and complete to the best of my knowledge and belief.

W. E. Walter
Name **W. E. Walter**
Position **District Superintendent**
Company **General American Oil Company of Texas**
Date **April 28, 1972**

RECEIVED
MAY 11 1972
I hereby certify that the information shown on this plat was plotted from field notes of a survey made by me or under my supervision, and that the same is true and correct to the best of my knowledge and belief.
U. S. GEOLOGICAL SURVEY
ARTESIA, NEW MEXICO

Date Surveyed
April 27, 1972
Registered Professional Engineer
and/or Land Surveyor

John A. Mattheis Jr
Certificate No.

1502

0 330 660 990 1320 1650 1980 2310 2640 2000 1500 1000 500 0

