

RECEIVED

N. M. D. C. C. COPY

SUBMIT IN DUPLICATE
(Other instructions on
reverse side)Form approved.
Budget Bureau No. 42-R1425.UNITED STATES
DEPARTMENT OF THE INTERIOR
GEOLOGICAL SURVEY

30-015-20648

5. LEASE DESIGNATION AND SERIAL NO.

LC-029413(b)

6. IF INDIAN, ALLOTTEE OR TRIBE NAME

7. UNIT AGREEMENT NAME

8. FARM OR LEASE NAME

9. WELL NO.

10. FIELD AND POOL, OR WILDCAT

11. SEC., T., R., M. OR BLM.

AND SURVEY OR AREA

12. COUNTY OR PARISH

13. STATE

14. DISTANCE IN MILES AND DIRECTION FROM NEAREST TOWN OR POST OFFICE*

15. DISTANCE FROM PROPOSED*

LOCATION TO NEAREST

PROPERTY OR LEASE LINE, FT.

(Also to nearest drig. unit line, if any)

16. NO. OF ACRES IN LEASE

17. NO. OF ACRES ASSIGNED

TO THIS WELL

18. DISTANCE FROM PROPOSED*

TO NEAREST WELL, DRILLING, COMPLETED,

OR APPLIED FOR, ON THIS LEASE, FT.

19. PROPOSED DEPTH

20. ROTARY OR CABLE TOOLS

21. APPROX. DATE WORK WILL START*

22. APPROX. DATE WORK WILL START*

23. PROPOSED CASING AND CEMENTING PROGRAM

24. IN ABOVE SPACE DESCRIBE PROPOSED PROGRAM: If proposal is to deepen or plug back, give data on present productive zone and proposed new productive zone. If proposal is to drill or deepen directionally, give pertinent data on subsurface locations and measured and true vertical depths. Give blowout preventer program, if any.

25. SIGNED (Signed) C. J. LOVE

26. TITLE Dist. Production Manager

27. DATE May 1, 1972

28. (This space for Federal or State office use)

29. PERMIT NO.

30. APPROVED BY

CONDITIONS OF APPROVAL, IF ANY:

31. R. L. BECKMAN

ACTING DISTRICT ENGINEER

32. THIS APPROVAL IS RESCINDED IF OPERATIONS

ARE NOT COMMENCED WITHIN 3 MONTHS.

33. AUG - 9 1972

34. *See Instructions On Reverse Side

35. RECEIVED

36. MAY - 5 1972

37. U. S. GEOLOGICAL SURVEY

38. ARTESIA, NEW MEXICO

39. 11"

8-5/8"

24#

650'

350

850

7-7/8"

5-1/2"

15.5#

3970'

Rotary

Immediately

Unknown

The pump and plug process will be used in cementing all strings of casing. The 8-5/8" will be set at approximately 650' and cemented to surface behind pipe. The 5-1/2" OD casing will be cemented to surface and perforated in the Grayburg-San Andres at approximately 3200' to 3950' and will be stimulated.

RECEIVED

MAY - 5 1972

U. S. GEOLOGICAL SURVEY

ARTESIA, NEW MEXICO

11"

8-5/8"

24#

650'

350

850

7-7/8"

5-1/2"

15.5#

3970'

Rotary

Immediately

Unknown

NEW MEXICO OIL CONSERVATION COMMISSION
WELL LOCATION AND ACREAGE DEDICATION PLAT

RECEIVED
Form 102
Supersedes C-128
Effective 1-1-65

MAY 10 1972

All distances must be from the outer boundaries of the Section.

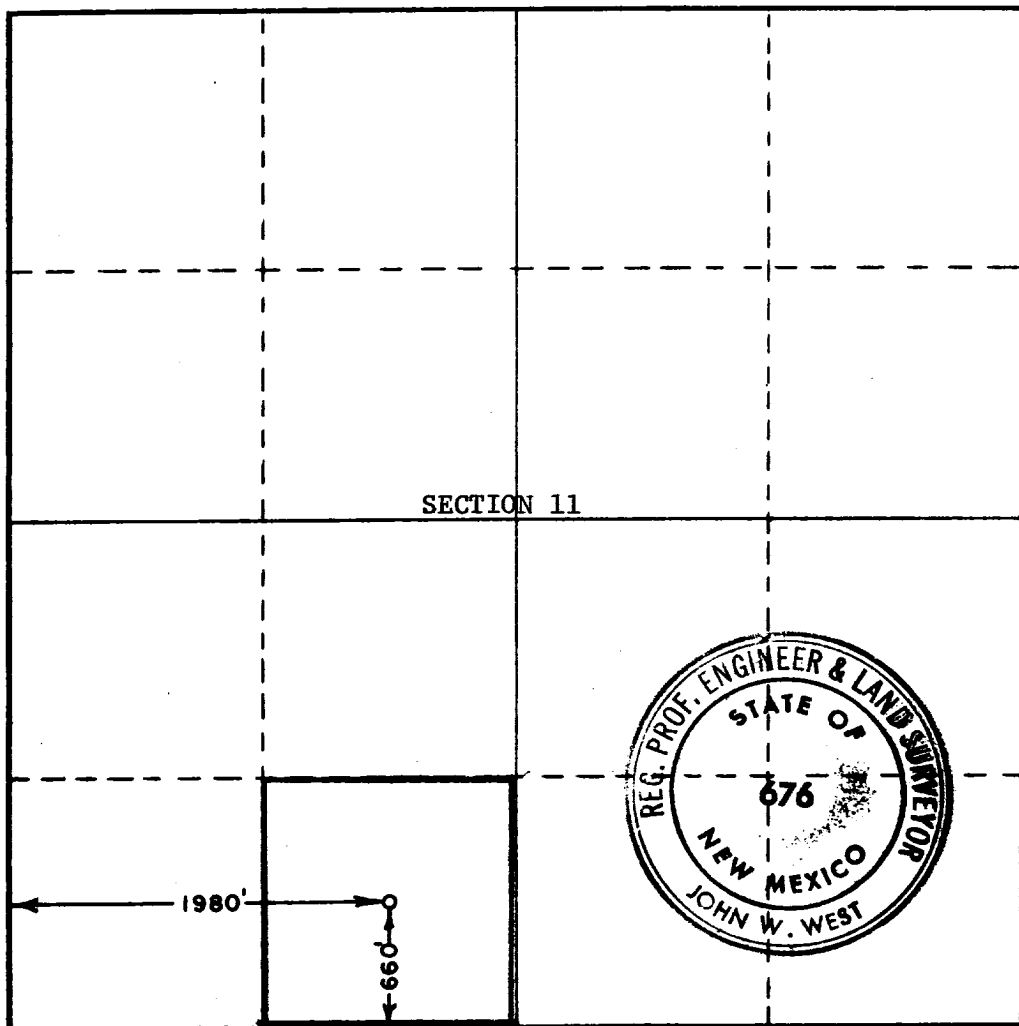
Operator SKELLY OIL COMPANY			Lease LEA "C"		Well No. 9
Unit Letter NO	Section 11	Township 17 SOUTH	Range 31 EAST	County D. C. C. ARTESIA, OFFICE EDDY	
Actual Footage Location of Well: 660 feet from the SOUTH line and 1980 feet from the WEST line					
Ground Level Elev. Unknown	Producing Formation Grayburg-San Andres	Pool Grayburg-Jackson		Dedicated Acreage: 40 Acres	

1. Outline the acreage dedicated to the subject well by colored pencil or hachure marks on the plat below.
2. If more than one lease is dedicated to the well, outline each and identify the ownership thereof (both as to working interest and royalty).
3. If more than one lease of different ownership is dedicated to the well, have the interests of all owners been consolidated by communitization, unitization, force-pooling, etc?

☐ Yes ☐ No If answer is "yes," type of consolidation _____

If answer is "no," list the owners and tract descriptions which have actually been consolidated. (Use reverse side of this form if necessary.) _____

No allowable will be assigned to the well until all interests have been consolidated (by communitization, unitization, forced-pooling, or otherwise) or until a non-standard unit, eliminating such interests, has been approved by the Commission.



CERTIFICATION

I hereby certify that the information contained herein is true and complete to the best of my knowledge and belief.

Name
C. J. Love C. J. Love
Position
District Production Manager
Company
Skelly Oil Company
Date
May 1, 1972

RECEIVED
MAY - 5 1972
U.S. GEOLOGICAL SURVEY
ARTESIA, NEW MEXICO
I hereby certify that the information shown on this plat was plotted from field notes of actual survey by me or under my supervision and that the same is true to the best of my knowledge and belief.

Date Surveyed
APRIL 27, 1972
Registered Professional Engineer and/or Land Surveyor

John W. West
Certificate No.
676

