

UNITED STATES
DEPARTMENT OF THE INTERIOR
GEOLOGICAL SURVEY

APPLICATION FOR PERMIT TO DRILL, DEEPEN, OR PLUG BACK

1a. TYPE OF WORK

DRILL ☒DEEPEN ☐PLUG BACK ☐

b. TYPE OF WELL

OIL
WELL ☒GAS
WELL ☐OTHER ☐SINGLE
ZONE ☒MULTIPLE
ZONE ☐

2. NAME OF OPERATOR

Skelly Oil Company

3. ADDRESS OF OPERATOR

P. O. Box 1351, Midland, Texas 79701

4. LOCATION OF WELL (Report location clearly and in accordance with any State requirements.)*

At surface
1980' FWL & 660' FWL, Sec. 11-17S-31E

At proposed prod. zone

14. DISTANCE IN MILES AND DIRECTION FROM NEAREST TOWN OR POST OFFICE*

15. DISTANCE FROM PROPOSED*

LOCATION TO NEAREST
PROPERTY OR LEASE LINE, FT.
(Also to nearest drlg. unit line, if any)

16. NO. OF ACRES IN LEASE

640

18. DISTANCE FROM PROPOSED LOCATION*

TO NEAREST WELL, DRILLING, COMPLETED,
OR APPLIED FOR, ON THIS LEASE, FT.

19. PROPOSED DEPTH

3970'

21. ELEVATIONS (Show whether DF, RT, GR, etc.)

Unknown

23.

PROPOSED CASING AND CEMENTING PROGRAM

SIZE OF HOLE	SIZE OF CASING	WEIGHT PER FOOT	SETTING DEPTH	QUANTITY OF CEMENT
11"	8-5/8"	24#	650'	350 sacks
7-7/8"	5-1/2"	15.5#	3970'	850 sacks

The pump and plug process will be used in cementing all strings of casing. The 5-1/2" OD casing will be cemented to surface and perforated in the Grayburg-San Andres at approximately 3407' to 3895' and will be stimulated. The drilling fluid will be brine water with sufficient salt gel to condition the hole for logging and running casing. Blow out preventer will be installed and tested to 1000 psi.

RECEIVED

JUN 19 1972

O. C. C.
ARTESIA OFFICE

IN ABOVE SPACE DESCRIBE PROPOSED PROGRAM: If proposal is to deepen or plug back, give data on present productive zone and proposed new productive zone. If proposal is to drill or deepen directionally, give pertinent data on subsurface locations and measured and true vertical depths. Give blowout preventer program, if any.

24.

SIGNED

(Signed) C. J. LOVE

TITLE

Dist. Production Manager

DATE

June 1, 1972

(This space for Federal or State office use)

PERMIT NO.

APPROVAL DATE

APPROVED BY

DISTRICT ENGINEER

TITLE

DATE

CONDITIONS OF APPROVAL, IF ANY:

**NEW MEXICO OIL CONSERVATION COMMISSION
WELL LOCATION AND ACREAGE DEDICATION PLAT**

RECEIVED

Form C-102
Supersedes C-128
Effective 1-1-65

JUN 19 1972

All distances must be from the outer boundaries of the Section.

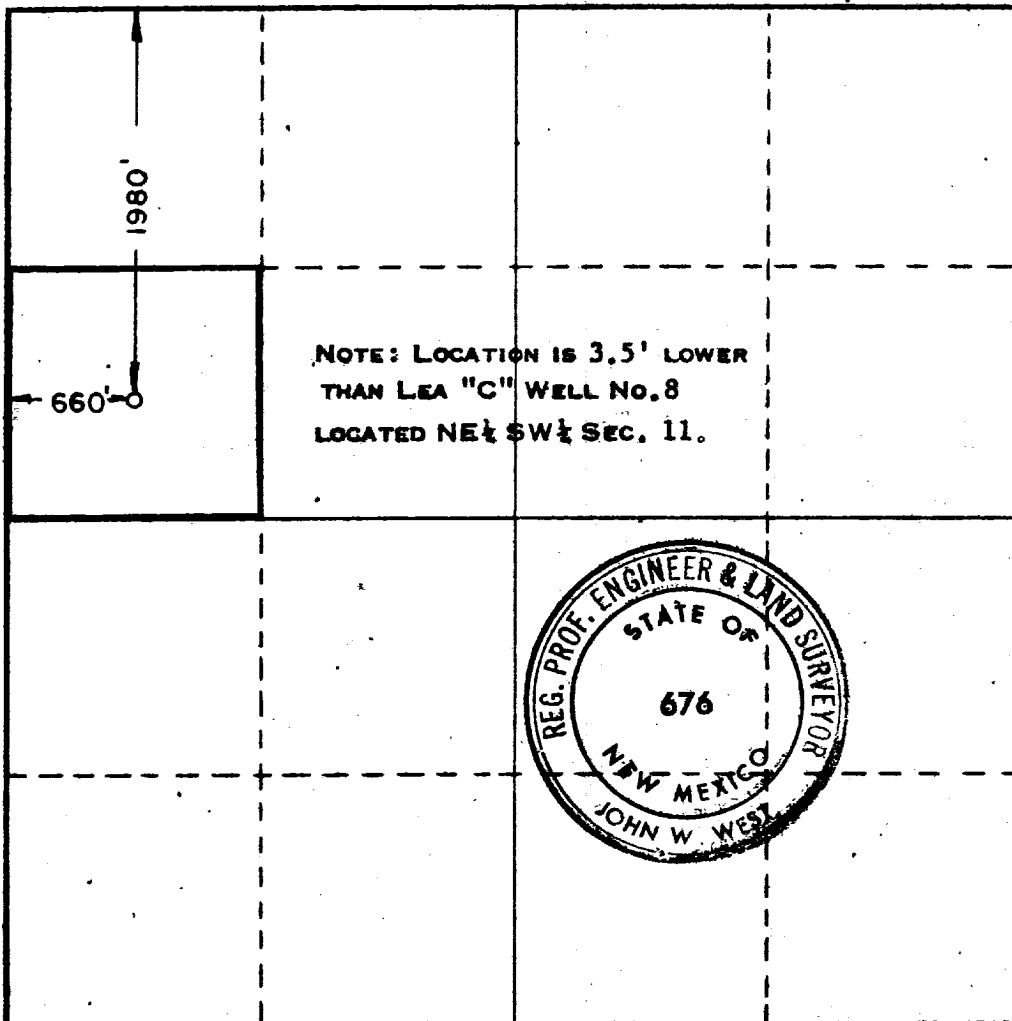
Operator SKELLY OIL COMPANY			Lease LEA "C"		Well No. O.C.C. 10 ARTERIA, OFFICE
Unit Letter E	Section 11	Township 17 SOUTH	Range 31 EAST	County EDDY	
Actual Footage Location of Well: 1980 feet from the NORTH line and 660 feet from the WEST line					
Ground Level Elev. Unknown	Producing Formation Gilbert-San Andres	Pool Gilbert-Jackson	Dedicated Acreage: 40 Acres		

1. Outline the acreage dedicated to the subject well by colored pencil or hatchure marks on the plat below.
2. If more than one lease is dedicated to the well, outline each and identify the ownership thereof (both as to working interest and royalty).
3. If more than one lease of different ownership is dedicated to the well, have the interests of all owners been consolidated by communitization, unitization, force-pooling, etc?

☐ Yes ☐ No If answer is "yes," type of consolidation _____

If answer is "no," list the owners and tract descriptions which have actually been consolidated. (Use reverse side of this form if necessary.) _____

No allowable will be assigned to the well until all interests have been consolidated (by communitization, unitization, forced-pooling, or otherwise) or until a non-standard unit, eliminating such interests, has been approved by the Commission.



CERTIFICATION

I hereby certify that the information contained herein is true and complete to the best of my knowledge and belief.

Name **C. J. Love C. J. Love**

Position **District Production Manager**

Company **Skelly Oil Company**

Date **June 1, 1972**

I hereby certify that the well location was determined from field notes of actual surveys made by me or under my supervision and that the same are correct to the best of my knowledge and belief.

RECEIVED
JUN 5 1972
U.S. GEOLOGICAL SURVEY
ARTERIA, NEW MEXICO

Date Surveyed **MAY 31, 1972**

Registered Professional Engineer and/or Land Surveyor

John W. West
Certificate No. **676**