

N. M. D. C. C. COPY

SUBMIT PLICATE\*  
(Other conditions on  
reverse side)Form approved  
Budget Bureau No. 42-R1425.UNITED STATES  
DEPARTMENT OF THE INTERIOR  
GEOLOGICAL SURVEY

## APPLICATION FOR PERMIT TO DRILL, DEEPEN, OR PLUG BACK

## 1a. TYPE OF WORK

DRILL ☒DEEPEN ☐PLUG BACK ☐

## b. TYPE OF WELL

OIL  
WELL ☒GAS  
WELL ☐OTHER ☐CABLE  
TOOL ☐MULTIPLE  
ZONE ☐

## 2. NAME OF OPERATOR

Skelly Oil Company

## 3. ADDRESS OF OPERATOR

P. O. Box 1351, Midland, Texas 79701

## 4. LOCATION OF WELL (Report location clearly and in accordance with any State requirements.)\*

At surface

660' FEL and 1980' FSL Sec. 11-17S-31E

At proposed prod. zone

## 14. DISTANCE IN MILES AND DIRECTION FROM NEAREST TOWN OR POST OFFICE\*

Unknown

## 15. DISTANCE FROM PROPOSED\*

LOCATION TO NEAREST  
PROPERTY OR LEASE LINE, FT.  
(Also to nearest drlg. unit line, if any) -----

## 16. NO. OF ACRES IN LEASE

640

## 18. DISTANCE FROM PROPOSED LOCATION\*

TO NEAREST WELL, DRILLING, COMPLETED,  
OR APPLIED FOR, ON THIS LEASE, FT. -----

## 19. PROPOSED DEPTH

3950'

## 21. ELEVATIONS (Show whether DF, RT, GR, etc.)

## 23. PROPOSED CASING AND CEMENTING PROGRAM

SIZE OF HOLE	SIZE OF CASING	WEIGHT PER FOOT	SETTING DEPTH	QUANTITY OF CEMENT
11"	8-5/8"	24#	650'	350 sacks
7-7/8"	5-1/2"	15.5#	3950'	1300 sacks

The pump and plug process will be used in cementing all strings of casing. The 5-1/2" OD casing will be cemented to surface and perforated in the Grayburg-San Andres at approximately 3200' to 3900' and will be stimulated. The drilling fluid will be brine water with sufficient gel to condition the hole for logging and running casing. Blowout preventer will be installed and tested to 1000 PSI.

PROPOSED OPERATIONS WILL NOT  
AFFECT ENVIRONMENT SIGNIFICANTLY  
RECEIVED  
JUL 17 1972RECEIVED  
JUL 10 1972  
U. S. GEOLOGICAL SURVEY  
ARTESIA, NEW MEXICO

IN ABOVE SPACE DESCRIBE PROPOSED PROGRAM: If proposal is to deepen or plug back, give location of present productive zone and proposed new productive zone. If proposal is to drill or deepen directionally, give pertinent data on subsurface locations and measured and true vertical depths. Give blowout preventer program, if any.

24.

(Signed) J. R. Avent

SIGNED

J. R. Avent

TITLE District Admin. Coordinator

DATE July 5, 1972

(This space for Federal or State office use)

PERMIT NO.

APPROVAL DATE

APPROVED BY

TITLE

DISTRICT ENGINEER

DATE

JUL 13 1972

CONDITIONS OF APPROVAL, IF ANY:

THIS APPROVAL IS RESCINDED IF OPERATIONS  
ARE NOT COMMENCED WITHIN 3 MONTHS.  
EXPIRES 10-13-72

\*See Instructions On Reverse Side

NEW MEXICO OIL CONSERVATION COMMISSION  
WELL LOCATION AND ACREAGE DEDICATION PLAT

RECEIVED

Form C-102  
Supersedes C-128  
Effective 1-1-65

JUL 17 1972

All distances must be from the outer boundaries of the Section

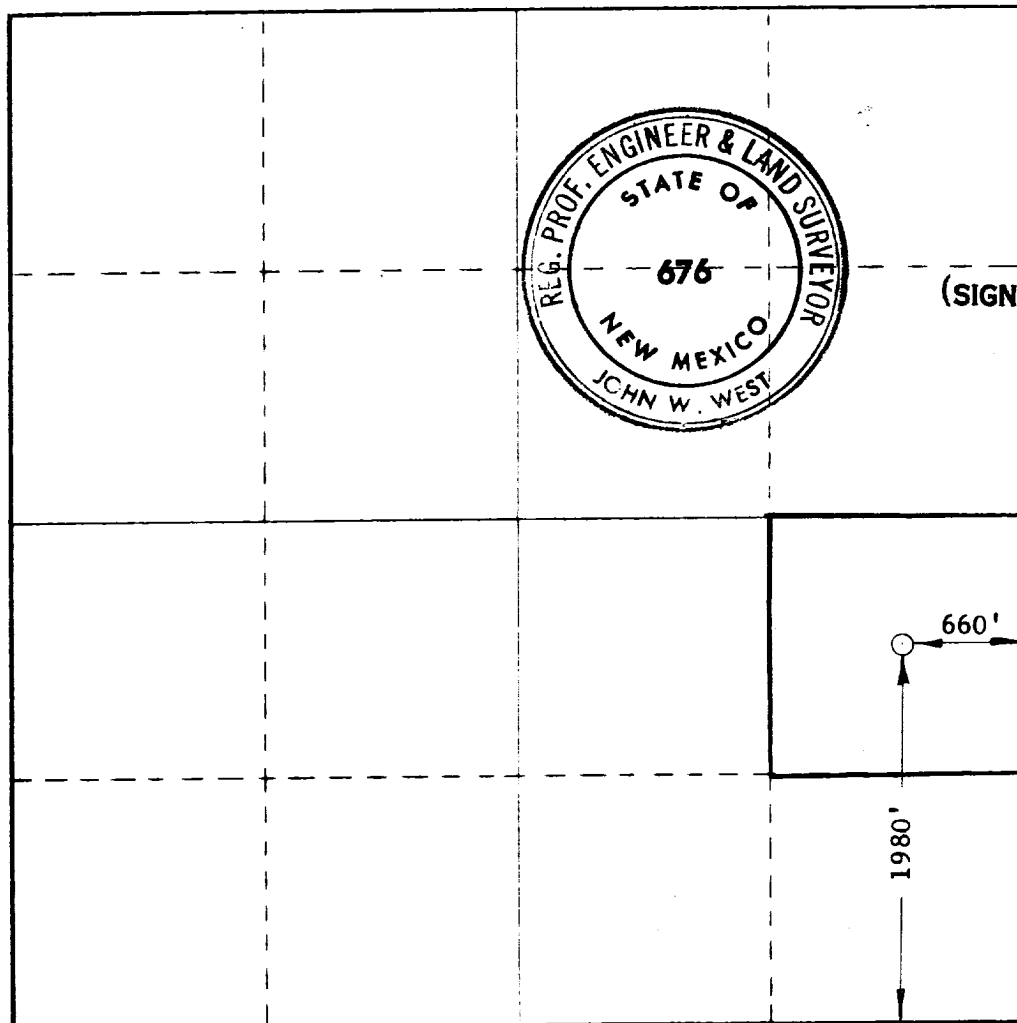
Operator <b>SKELLY OIL COMPANY</b>			Lease <b>LEA "C"</b>		Well No. <b>14</b>	
Unit Letter <b>I</b>	Section <b>11</b>	Township <b>17 SOUTH</b>	Range <b>31 EAST</b>	County <b>ARTESIA, OFFICE</b>		
Actual Footage Location of Well:						
<b>660</b> feet from the <b>EAST</b> line and <b>1980</b> feet from the <b>SOUTH</b> line						
Ground Level Elev.	Producing Formation	Pool			Dedicated Acreage	
	<b>Grayburg-San Andres</b>	<b>Grayburg-Jackson</b>			<b>40</b>	

- Outline the acreage dedicated to the subject well by colored pencil or hatchure marks on the plat below.
- If more than one lease is dedicated to the well, outline each and identify the ownership thereof (both as to working interest and royalty).
- If more than one lease of different ownership is dedicated to the well, have the interests of all owners been consolidated by communitization, unitization, force-pooling, etc?

☐ Yes ☐ No If answer is "yes," type of consolidation \_\_\_\_\_

If answer is "no," list the owners and tract descriptions which have actually been consolidated. (Use reverse side of this form if necessary.) \_\_\_\_\_

No allowable will be assigned to the well until all interests have been consolidated (by communitization, unitization, forced-pooling, or otherwise) or until a non-standard unit, eliminating such interests, has been approved by the Commission.



CERTIFICATION

I hereby certify that the information contained herein is true and complete to the best of my knowledge and belief.

Name C. J. Love  
(SIGNED) CHARLES J. LOVE C. J. Love

District Production Manager

Skelly Oil Company

July 5, 1972

I hereby certify that the well location shown on this plat is the same as shown in the notes of actual surveys made by me under my supervision and is true and correct to the best of my knowledge and belief.

RECEIVED  
JUL 10 1972  
U. S. GEOLOGICAL SURVEY  
ARTESIA, NEW MEXICO

Date Surveyed

JUNE 28, 1972

Registered Professional Engineer and/or Land Surveyor

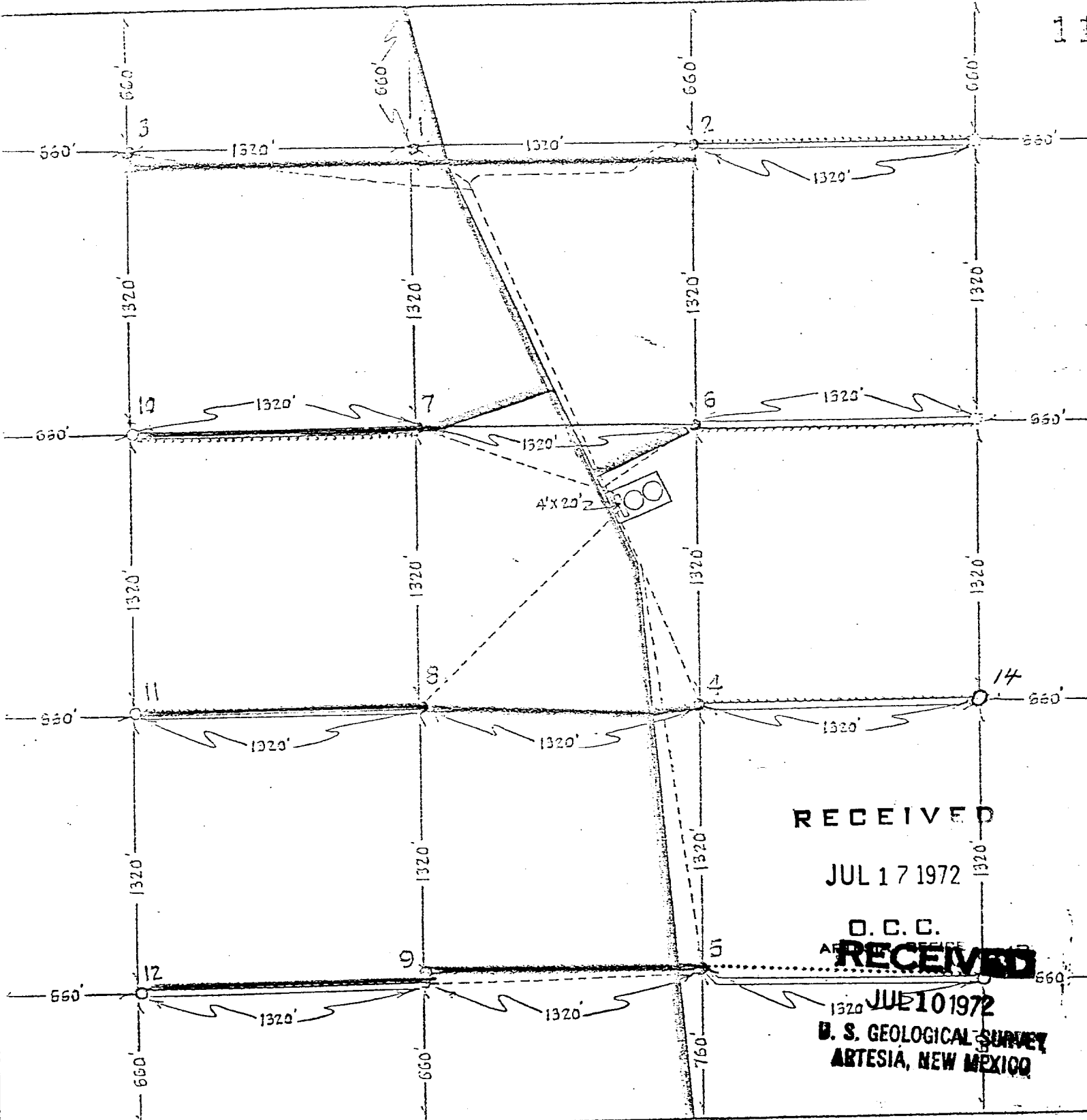
John W. West  
Certificate No. **676**



SKELLY OIL COMPANY  
LEA "C" LEASE NO. 66812  
FEDERAL SERIAL NO. 029

Township T-17-S, Range R-31-E, County Eddy, State New Mexico

11  
11



RECEIVED

JUL 17 1972

O. C. C.

RECEIVED

JUL 10 1972

U. S. GEOLOGICAL SURVEY  
ARTESIA, NEW MEXICO

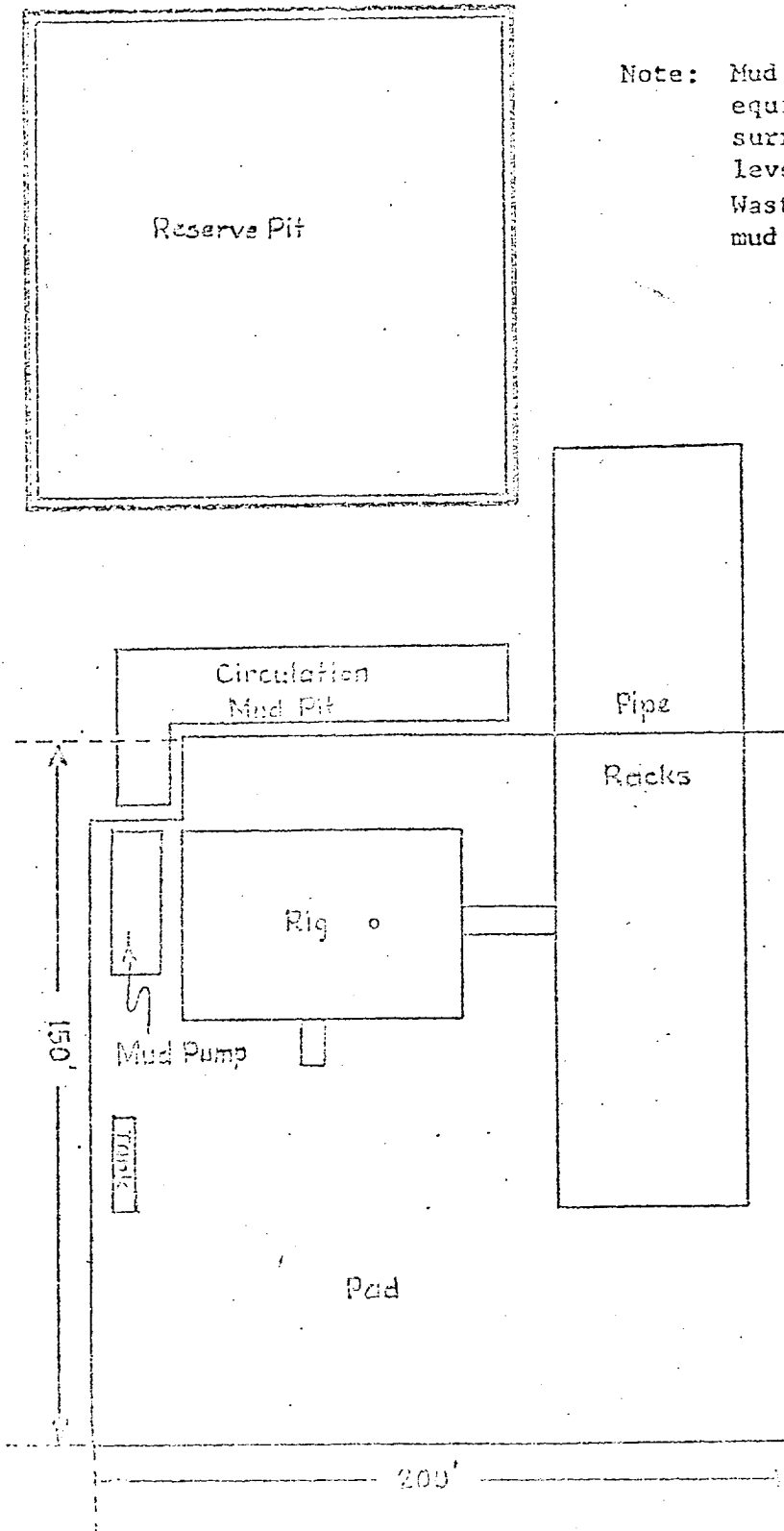
1-Section Plat

LEGEND

- Oilwell
- Location
- Proposed Location
- Lease Roads
- Flow Lines (Production)
- Produced water disposed of in Grayburg-Jackson Reservoir 2 miles South.
- Camps (None)
- ≡ Airstrips (None)
- ⊙ Water Supply (None)
- Planned Access Roads
- Planned Flowlines
- Skelly Unit Injection System—Fresh from Egan Water Company.

DRILLING LOCATION LAYOUT  
Schematic  
(Not Scaled)

Lea "C" Well No. 14.

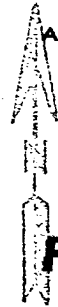


Note: Mud pits will be filled. Drilling equipment removed and surface surrounding the pad cleaned up and leveled after the well is completed. Waste material to be buried in the mud pit.

RECEIVED

JUL 17 1972

O. C. C.  
ARTESIA, NEW MEXICO



RECEIVED

JUL 10 1972

U. S. GEOLOGICAL SURVEY  
ARTESIA, NEW MEXICO