

UNITED STATES
DEPARTMENT OF THE INTERIOR
GEOLOGICAL SURVEY

30-615-20707

APPLICATION FOR PERMIT TO DRILL, DEEPEN, OR PLUG BACK

1a. TYPE OF WORK
DRILL ☒ DEEPEN ☐ PLUG BACK ☐

b. TYPE OF WELL
OIL WELL ☒ GAS WELL ☐ OTHER ☐ SINGLE ZONE ☐ MULTIPLE ZONE ☐

2. NAME OF OPERATOR
Skelly Oil Company

3. ADDRESS OF OPERATOR

P. O. Box 1351, Midland, Texas 79701

4. LOCATION OF WELL (Report location clearly and in accordance with any State requirements.)*
At surface

660' FNL and 660' FEL Sec. 11-17S-31E
At proposed prod. zone

14. DISTANCE IN MILES AND DIRECTION FROM NEAREST TOWN OR POST OFFICE*

15. DISTANCE FROM PROPOSED* LOCATION TO NEAREST PROPERTY OR LEASE LINE, FT. (Also to nearest drig. unit line, if any) -----

18. DISTANCE FROM PROPOSED LOCATION* TO NEAREST WELL, DRILLING, COMPLETED, OR APPLIED FOR, ON THIS LEASE, FT. -----

21. ELEVATIONS (Show whether DF, RT, GR, etc.)

Unknown

23. PROPOSED CASING AND CEMENTING PROGRAM

SIZE OF HOLE	SIZE OF CASING	WEIGHT PER FOOT	SETTING DEPTH	QUANTITY OF CEMENT
11"	8-5/8"	24#	650'	350 sacks
7-7/8"	5-1/2"	15.5#	3950'	1300 sacks

The pump and plug process will be used in cementing all strings of casing. The 5-1/2" OD casing will be cemented to surface and perforated in the Grayburg-San Andres at approximately 3200' to 3900' and will be stimulated. The drilling fluid will be brine water with sufficient gel to condition the hole for logging and running casing. Blowout preventer will be installed and tested to 1000 PSI.

RECEIVED

JUL 17 1972

PROPOSED OPERATIONS WILL AFFECT ENVIRONMENT SIGNIFICANTLY

RECEIVED
JUL 10 1972
U. S. GEOLOGICAL SURVEY
ARTESIA, NEW MEXICO

IN ABOVE SPACE DESCRIBE PROPOSED PROGRAM: If proposal is to deepen or plug back, give data on present productive zone and proposed productive zone. If proposal is to drill or deepen directionally, give pertinent data on subsurface locations and measured and true vertical depths. Give blowout preventer program, if any.

24. (Signed) J. R. Avent
SIGNED J. R. Avent TITLE District Admin. Coordinator DATE July 5, 1972

(This space for Federal or State office use)

JUL 13 1972

PERMIT NO. APPROVAL DATE
DISTRICT ENGINEER
APPROVED BY [Signature] TITLE DATE JUL 13 1972
CONDITIONS OF APPROVAL, IF ANY:

THIS APPROVAL IS RESCINDED IF OPERATIONS ARE NOT COMMENCED WITHIN 3 MONTHS.
EXPIRES 10-13-73

*See Instructions On Reverse Side

W MEXICO OIL CONSERVATION COMMISSION
WELL LOCATION AND ACREAGE DEDICATION PLAT

RECEIVED
Form C-102
Supersedes C-128
Effective 1-1-65

JUL 17 1972

All distances must be from the outer boundaries of the Section

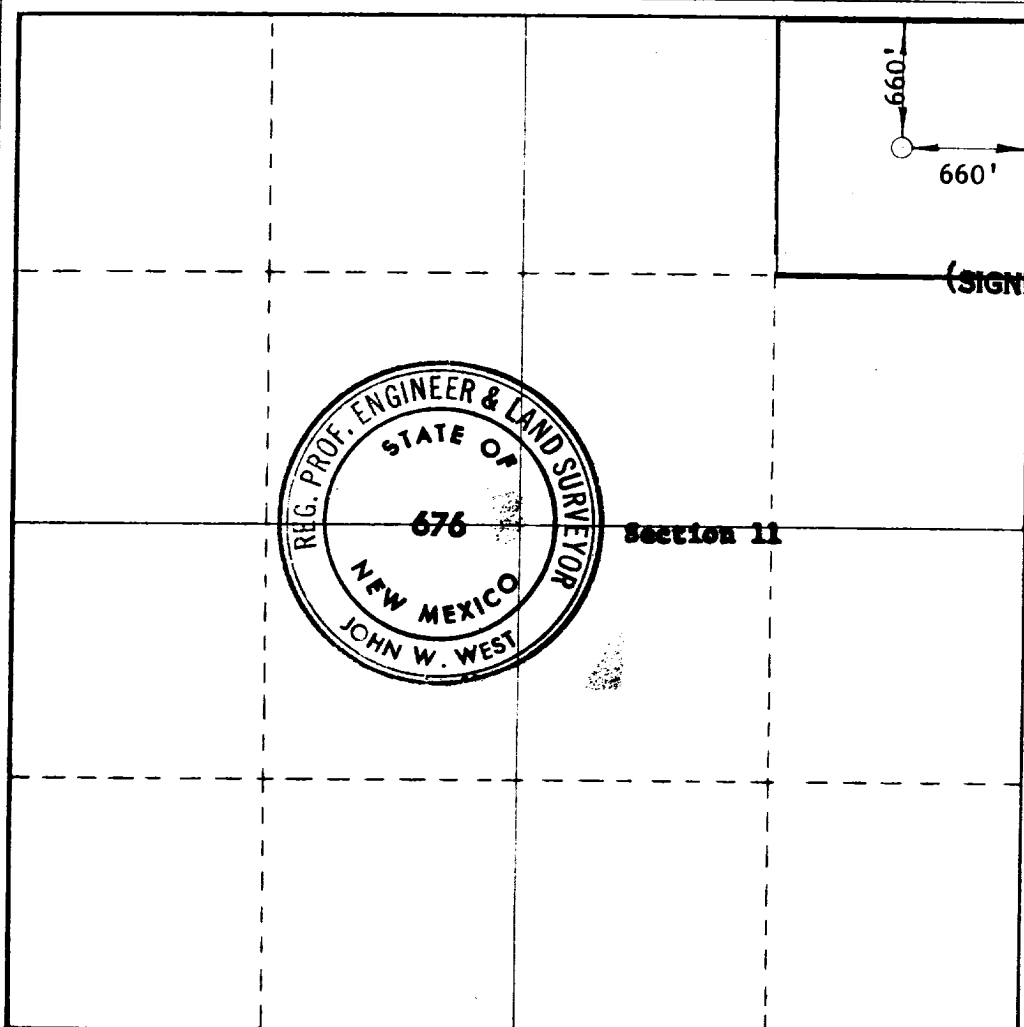
Operator SKELLY OIL COMPANY			Lease LEA "C"		Well No. 16
Unit Letter A	Section 11	Township 17 SOUTH	Range 31 EAST	County ARTESIA, OFFICE	
Actual Footage Location of Well: 660 feet from the NORTH line and 660 feet from the EAST line					
Ground Level Elev.	Producing Formation	Pool	Dedicated Acreage: 40 Acres		

1. Outline the acreage dedicated to the subject well by colored pencil or hatchure marks on the plat below.
2. If more than one lease is dedicated to the well, outline each and identify the ownership thereof (both as to working interest and royalty).
3. If more than one lease of different ownership is dedicated to the well, have the interests of all owners been consolidated by communitization, unitization, force-pooling, etc?

☐ Yes ☐ No If answer is "yes," type of consolidation _____

If answer is "no," list the owners and tract descriptions which have actually been consolidated. (Use reverse side of this form if necessary.) _____

No allowable will be assigned to the well until all interests have been consolidated (by communitization, unitization, forced-pooling, or otherwise) or until a non-standard unit, eliminating such interests, has been approved by the Commission.



CERTIFICATION

I hereby certify that the information contained herein is true and complete to the best of my knowledge and belief.

(SIGNED) **CHARLES J. LOVE**
C. J. Love

District Production Manager

Shelly Oil Company

Date **July 1, 1972**

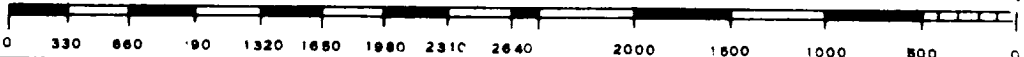
RECEIVED
JUL 10 1972
U.S. GEOLOGICAL SURVEY
ARTESIA, NEW MEXICO

Date Surveyed

JUNE 28, 1972

Registered Professional Engineer and/or Land Surveyor

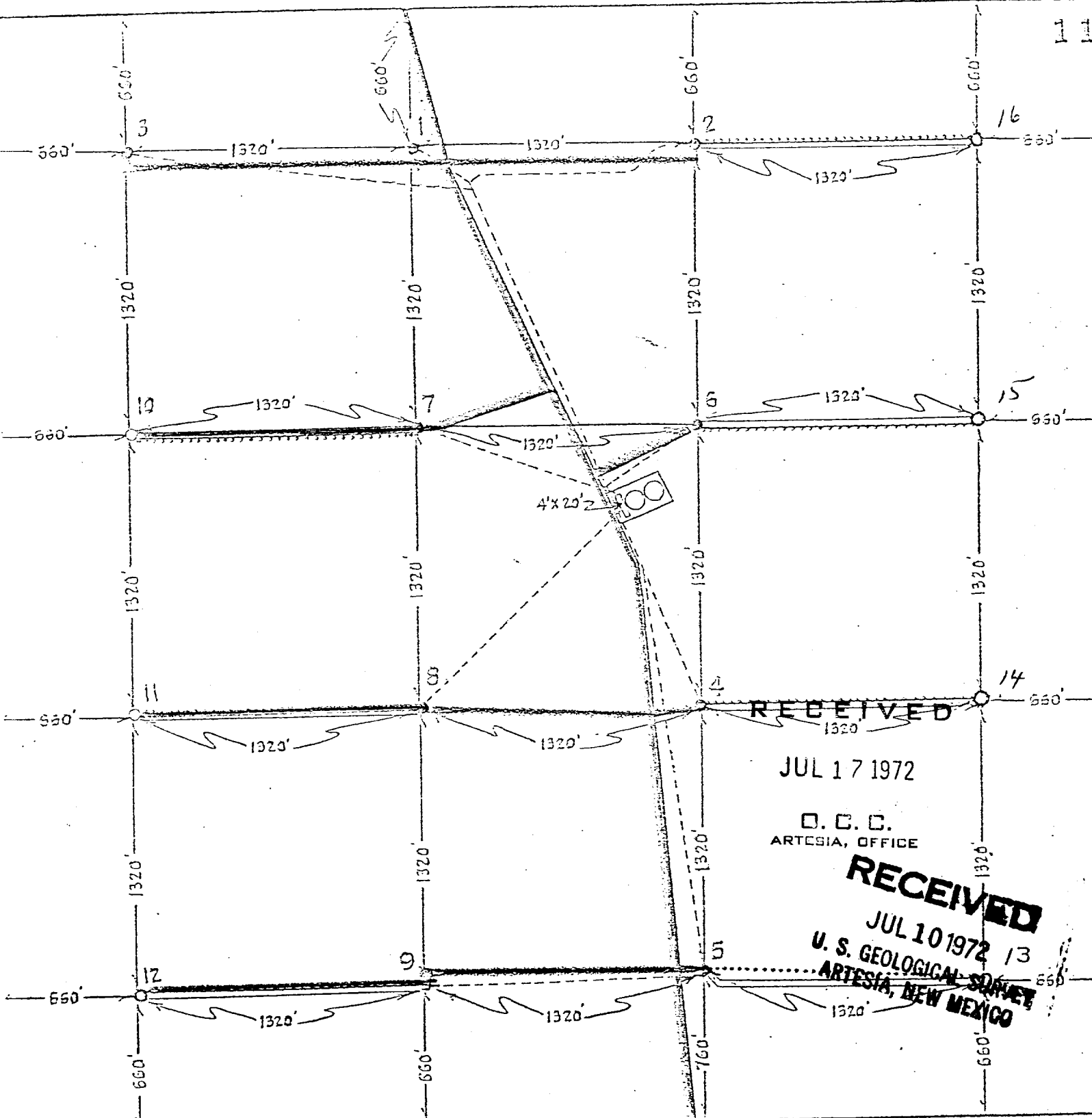
John W. West
Certificate No. **676**



SKELLY OIL COMPANY
LEA "C" LEASE NO. 66818 -
FEDERAL SERIAL NO. 029411

Township T-17-S, Range R-31-E, County Eddy, State New Mexico

11



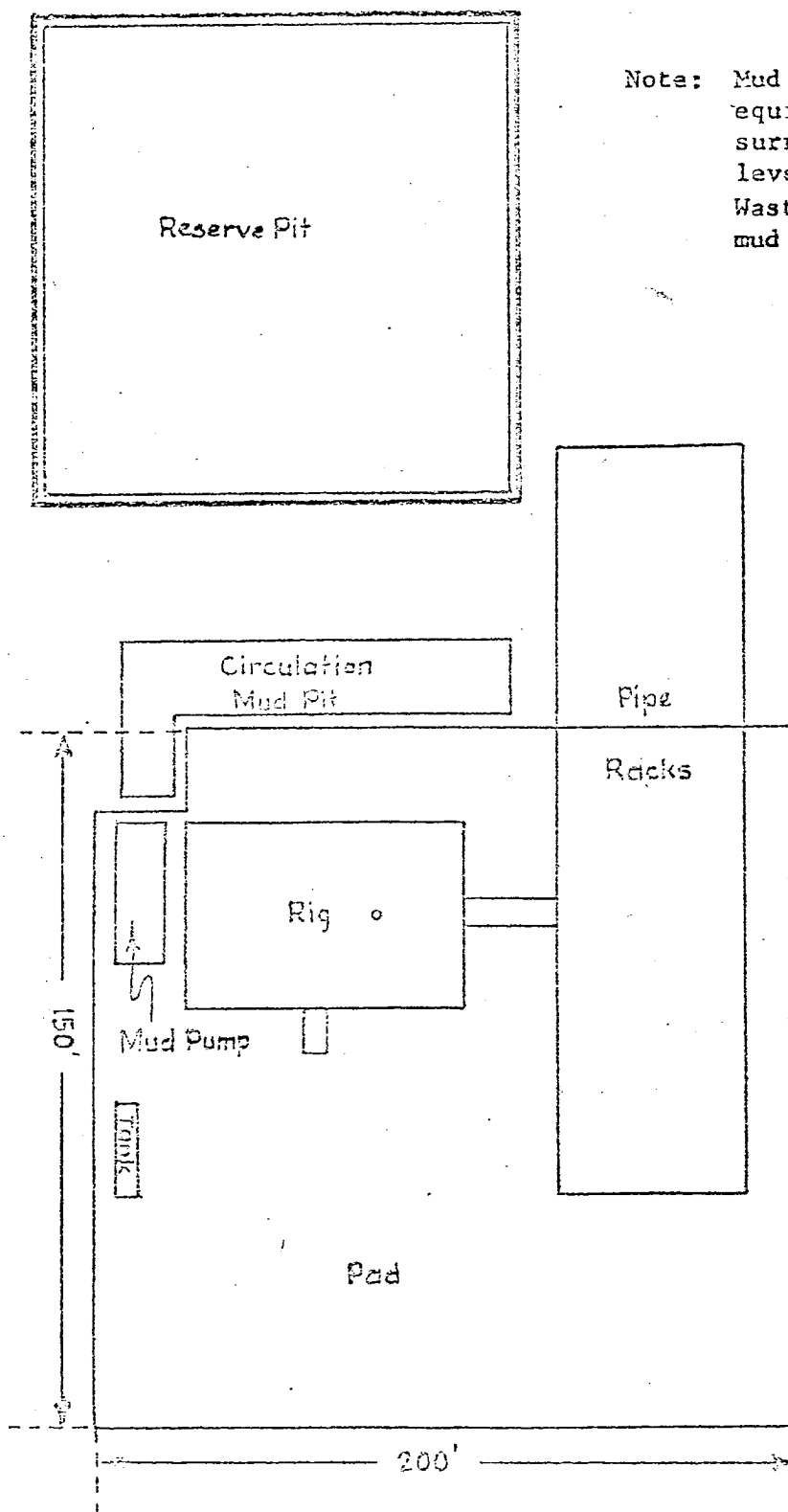
1-Section Plat

LEGEND

- Oilwell
- Location
- Proposed Location
- Lease Roads
- Flow Lines (Production)
- Planned Flowlines
- ⌐ Camps (None)
- ≡ Airstrips (None)
- ⌐ Water Supply (None)
- Planned Access Roads
- Skelly Unit Injection System—Fresh from Egan Water Company.
- Produced water disposed of in Grayburg-Jackson Reservoir 2 miles South.

DRILLING LOCATION LAYOUT
Schematic
(Not Scaled)

Lea "C" Well No. 16



Note: Mud pits will be filled. Drilling equipment removed and surface surrounding the pad cleaned up and leveled after the well is completed. Waste material to be buried in the mud pit.

RECEIVED

JUL 17 1972

D. C. C.
ARTESIA, OFFICE

RECEIVED

JUL 10 1972
U. S. GEOLOGICAL SURVEY
ARTESIA, NEW MEXICO