

1-15 (1963)

UNITED STATES  
DEPARTMENT OF THE INTERIOR  
GEOLOGICAL SURVEY

reverse side)

30-015-20735

copy \$

## APPLICATION FOR PERMIT TO DRILL, DEEPEN, OR PLUG BACK

## 1a. TYPE OF WORK

DRILL ☒DEEPEN ☐PLUG BACK ☐

## b. TYPE OF WELL

OIL WELL ☒GAS WELL ☐OTHER ☐SINGLE ZONE ☒MULTIPLE ZONE ☐

## 2. NAME OF OPERATOR

Gulf Oil Corporation

AUG 29 1972

## 3. ADDRESS OF OPERATOR

Box 670, Hobbs, New Mexico 88240

O. C. C.

## 4. LOCATION OF WELL (Report location clearly and in accordance with any State requirements.)\*

At surface

660' FS &amp; WL, Section 9, 17-S, 30-E

At proposed prod. zone

## 14. DISTANCE IN MILES AND DIRECTION FROM NEAREST TOWN OR POST OFFICE\*

## 10. DISTANCE FROM PROPOSED\*

LOCATION TO NEAREST  
PROPERTY OR LEASE LINE, FT.  
(Also to nearest drlg. unit line, if any)

## 16. NO. OF ACRES IN LEASE

80

17. NO. OF ACRES ASSIGNED  
TO THIS WELL

40

18. DISTANCE FROM PROPOSED LOCATION\*  
TO NEAREST WELL, DRILLING, COMPLETED,  
OR APPLIED FOR, ON THIS LEASE, FT.

## 19. PROPOSED DEPTH

3700'

## 20. ROTARY OR CABLE TOOLS

Rotary

## 21. ELEVATIONS (Show whether DF, RT, GR, etc.)

## 22. APPROX. DATE WORK WILL START\*

September 1, 1972

## 23.

## PROPOSED CASING AND CEMENTING PROGRAM

SIZE OF HOLE	SIZE OF CASING	WEIGHT PER FOOT	SETTING DEPTH	QUANTITY OF CEMENT
11"	8-5/8"	24# K-55	450'	200 sacks C1 C W/2% Ca C12.
7-7/8"	4-1/2"	9.50# H-40	3700'	570 sacks Class C

## Proposed Mud Program

0' - 450' Spud Mud  
450' - 2700' Brine Water  
2700' - TD Salt Water Gel.

RECEIVED

AUG 22 1972

U. S. GEOLOGICAL SURVEY  
ARTESIA, NEW MEXICO

IN ABOVE SPACE DESCRIBE PROPOSED PROGRAM: If proposal is to deepen or plug back, give data on present productive zone and proposed new productive zone. If proposal is to drill or deepen directionally, give pertinent data on subsurface locations and measured and true vertical depths. Give blowout preventer program, if any.

## 24.

SIGNED

C. B. Borkland

TITLE

Area Production Manager

DATE

August 21, 1972

(This space for Federal or State office use)

PERMIT NO.

APPROVED BY

CONDITIONS OF APPROVAL, IF ANY:

AUG 28 1972

H. L. BEEKMAN  
ACTING DISTRICT ENGINEER

THIS APPROVAL IS RESCINDED IF OPERATIONS  
ARE NOT COMMENCED WITHIN  
EXPIRES 3 MONTHS.

NOV 28 1972

\*See Instructions On Reverse Side

**NEW MEXICO OIL CONSERVATION COMMISSION  
WELL LOCATION AND ACREAGE DEDICATION PLAT**

Form C-102  
Supersedes C-128  
Effective 1-1-65

All distances must be from the outer boundaries of the Section.

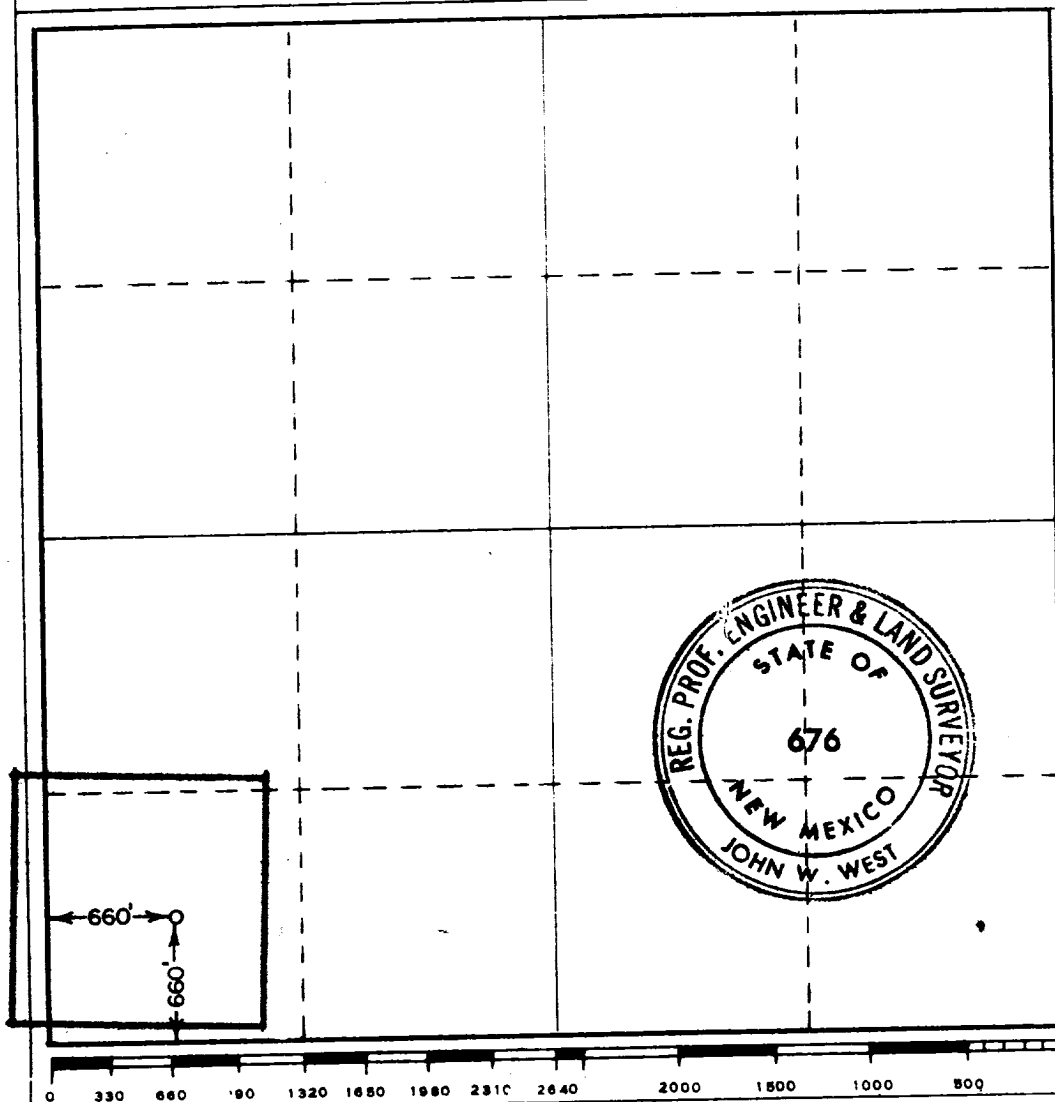
Operator <b>GULF OIL CORPORATION</b>			Lease <b>HOLDER "CB" <del>NCEB</del> FEDERAL</b>		Well No. <b>3</b>
Unit Letter <b>M</b>	Section <b>9</b>	Township <b>17 SOUTH</b>	Range <b>30 EAST</b>	County <b>EDDY</b>	
Actual Footage Location of Well: <b>660</b> feet from the <b>SOUTH</b> line and <b>660</b> feet from the <b>WEST</b> line					
Ground Level Elev.	Producing Formation <b>Grayburg</b>		Pool <b>Grayburg Jackson</b>		Dedicated Acreage: <b>40</b> Acres

1. Outline the acreage dedicated to the subject well by colored pencil or hachure marks on the plat below.
2. If more than one lease is dedicated to the well, outline each and identify the ownership thereof (both as to working interest and royalty).
3. If more than one lease of different ownership is dedicated to the well, have the interests of all owners been consolidated by communitization, unitization, force-pooling, etc?

☐ Yes    ☐ No    If answer is "yes," type of consolidation \_\_\_\_\_

If answer is "no," list the owners and tract descriptions which have actually been consolidated. (Use reverse side of this form if necessary.) \_\_\_\_\_

No allowable will be assigned to the well until all interests have been consolidated (by communitization, unitization, forced-pooling, or otherwise) or until a non-standard unit, eliminating such interests, has been approved by the Commission.



**CERTIFICATION**

I hereby certify that the information contained herein is true and complete to the best of my knowledge and belief.

**ORIGINAL SIGNED BY**

**C. D. BORLAND**

Name

**C. D. BORLAND**

Position

**Area Production Manager**

Company

**Gulf Oil Corporation**

Date

**August 21, 1972**

I hereby certify that the well location shown on this plat was plotted from field notes of actual surveys made for and under my supervision and that the same is true and correct to the best of my knowledge and belief.

**RECEIVED**  
**AUG 22 1972**  
**B. G. GEOLOGICAL SURVEY**  
**ARTESIA, NEW MEXICO**

Date Surveyed

**AUGUST 18, 1972**

Registered Professional Engineer and/or Land Surveyor

*John W. West*

Certificate No.

**676**

# Gulf Oil Company - U.S.

HOBBS PRODUCTION AREA

C. D. Borland  
AREA PRODUCTION MANAGER

August 21, 1972

P. O. Box 570  
Hobbs, New Mexico 88240

U. S. Geological Survey  
P. O. Drawer U  
Artesia, New Mexico 88210

Re: Surface Development Plan  
for Application To Drill  
Gulf's Holder "CB" (NCT-B)  
Federal Nos **3** and **4**, Eddy  
County.

Gentlemen:

The information you require concerning the surface development for the subject locations is as follows:

1. Existing Roads - See attached plat for roads in immediate area.
2. Planned access Road - See attached plat.
3. Location of Wells and Lateral Roads - See attached plat.
4. Location of Tank Battery and Flow Lines - Tank battery to be constructed mid-way between proposed wells. See attached plat.
5. Location and Types of Water Supply - Fresh water and brine water to be hauled in from outside of immediate area.
6. Method of Handling Waste Material - Rubbish to be burned or hauled off.
7. Location of Camps and Airstrips - None in immediate area.
8. Location Layout - See attached drawing.
9. Surface Restoration - Location to be cleaned and reserve pit filled and leveled.

Yours truly,



C. D. BORLAND  
Area Production Manager

KLC: lwd

Att'd



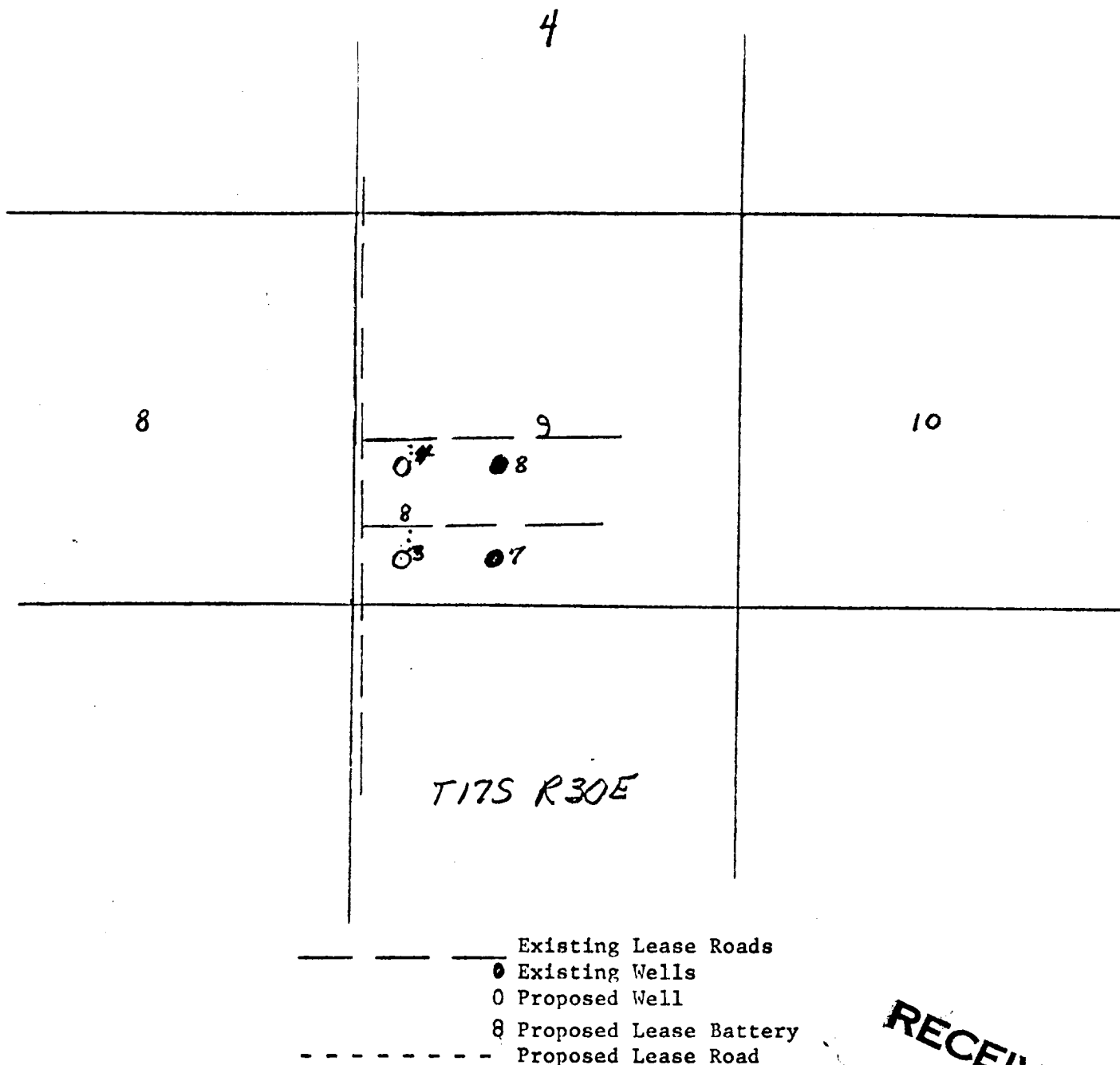
A DIVISION OF GULF OIL CORPORATION

RECEIVED  
AUG 22 1972  
U. S. GEOLOGICAL SURVEY  
ARTESIA, NEW MEXICO

Gulf Oil Corporation  
Surface Information Plat

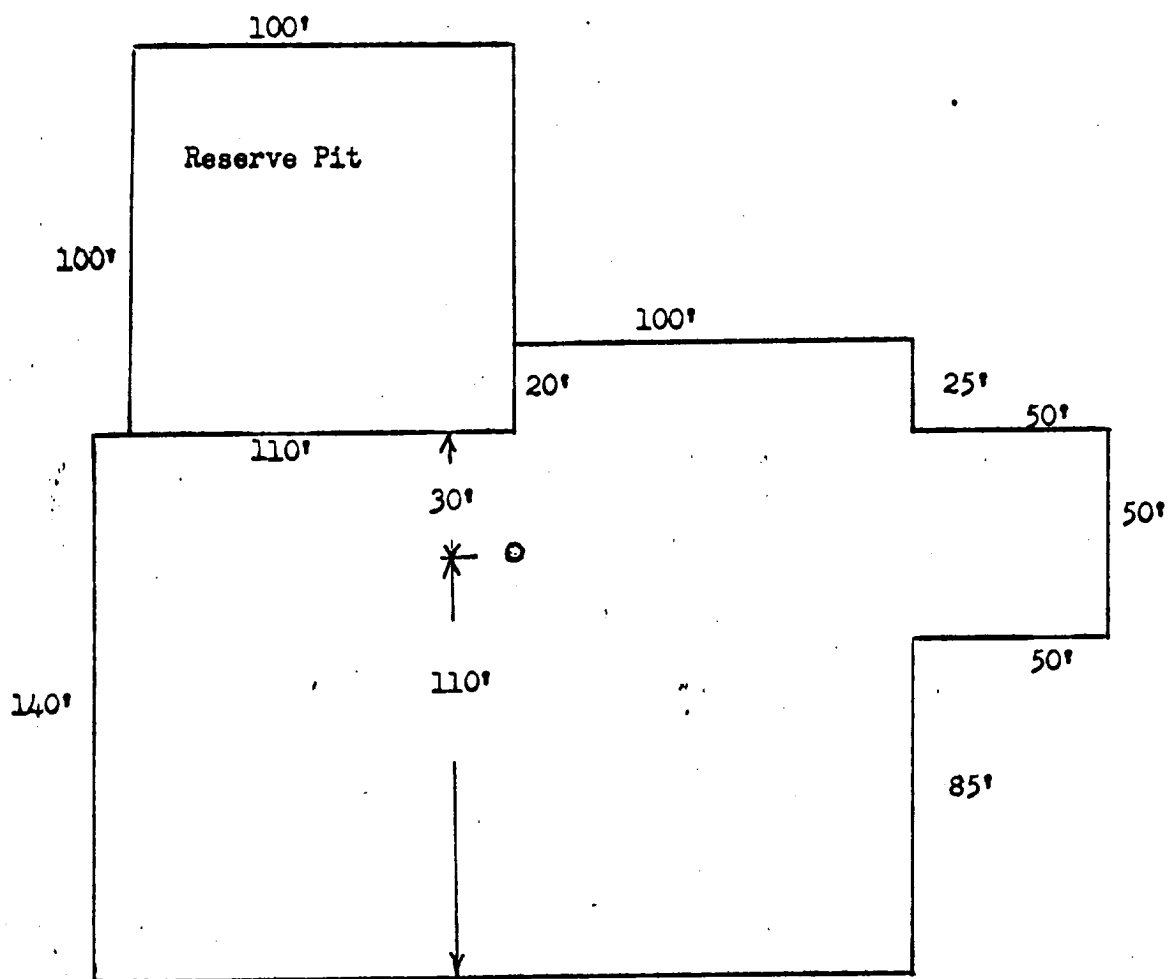
Proposed Well: Holder "CB" (NCT-B) No. 1, 660' FS & WL,  
Section 9, 17-S, 30-E, Eddy Co., New Mexico

Proposed Well: Holder "CB" (NCT-R) No. 2, 1980' FSL & 660' FWL,  
Section 9, 17-S, 30-E, Eddy Co., New Mexico



RECEIVED  
AUG 22 1972  
U. S. GEOLOGICAL SURVEY  
ARTESIA, NEW MEXICO

GULF OIL CORPORATION  
NEW WELL DRILLING PAD



Scale: 1" = 50'

**RECEIVED**  
AUG 22 1972  
U. S. GEOLOGICAL SURVEY  
ARTESIA, NEW MEXICO