

NO. OF COPIES RECEIVED	6
DISTRIBUTION	
SANTA FE	1
FILE	1 ✓
U.S.G.S.	2
LAND OFFICE	1
OPERATOR	1

NEW MEXICO OIL CONSERVATION COMMISSION

**RECEIVED**

MAY 10 1974

30-015-21213

Form C-101  
Revised 1-1-65

5A. Indicate Type of Lease
STATE <input checked="" type="checkbox"/> FEE <input type="checkbox"/>
5. State Oil & Gas Lease No.
B-1483

APPLICATION FOR PERMIT TO DRILL, DEEPEN, OR PLUG BACK

1a. Type of Work		7. Unit Agreement Name	
b. Type of Well OIL WELL <input checked="" type="checkbox"/> GAS WELL <input type="checkbox"/> OTHER <input type="checkbox"/>		8. Farm or Lease Name Etz J State	
2. Name of Operator Texas American Oil Corporation		9. Well No. 25	
3. Address of Operator 1012 Midland Savings Building, Midland, Texas 79701		10. Field and Pool, or Wildcat Grayburg Jackson	
4. Location of Well UNIT LETTER O LOCATED 330' FEET FROM THE South LINE AND 1650 FEET FROM THE East LINE OF SEC. 16 TWP. 17-S RGE. 30-E NMPM		12. County Eddy	
19. Proposed Depth 2850		19A. Formation Q, GB	
20. Rotary or C.T. C. T.		21. Elevations (Show whether DF, RT, etc.) 3676 GR	
21A. Kind & Status Plug, Bond J. S. Ward & Son		21B. Drilling Contractor Cortez Drilling Co.	
22. Approx. Date Work will start 7-15-74			

23.

PROPOSED CASING AND CEMENT PROGRAM

SIZE OF HOLE	SIZE OF CASING	WEIGHT PER FOOT	SETTING DEPTH	SACKS OF CEMENT	EST. TOP
11"	8-5/8"	24#	500'	150	Circ.
7-7/8"	4-1/2"	9.50#	2850'	450	1200

APPROVAL VALID  
FOR 90 DAYS UNLESS  
DRILLING COMMENCED,

EXPIRES 8-15-74

IN ABOVE SPACE DESCRIBE PROPOSED PROGRAM: IF PROPOSAL IS TO DEEPEN OR PLUG BACK, GIVE DATA ON PRESENT PRODUCTIVE ZONE AND PROPOSED NEW PRODUCTIVE ZONE. GIVE BLOWOUT PREVENTER PROGRAM, IF ANY.

I hereby certify that the information above is true and complete to the best of my knowledge and belief.

Signed J. Emanuel Title Engineer Date May 9, 1974

(This space for State Use)

APPROVED BY W. A. Gressett TITLE OIL AND GAS INSPECTOR DATE MAY 15 1974

CONDITIONS OF APPROVAL, IF ANY:

NE MEXICO OIL CONSERVATION COMMISSION  
WELL LOCATION AND ACREAGE DEDICATION PLAT

Form C-102  
Supersedes C-128  
Effective 1-1-65

All distances must be from the outer boundaries of the Section.

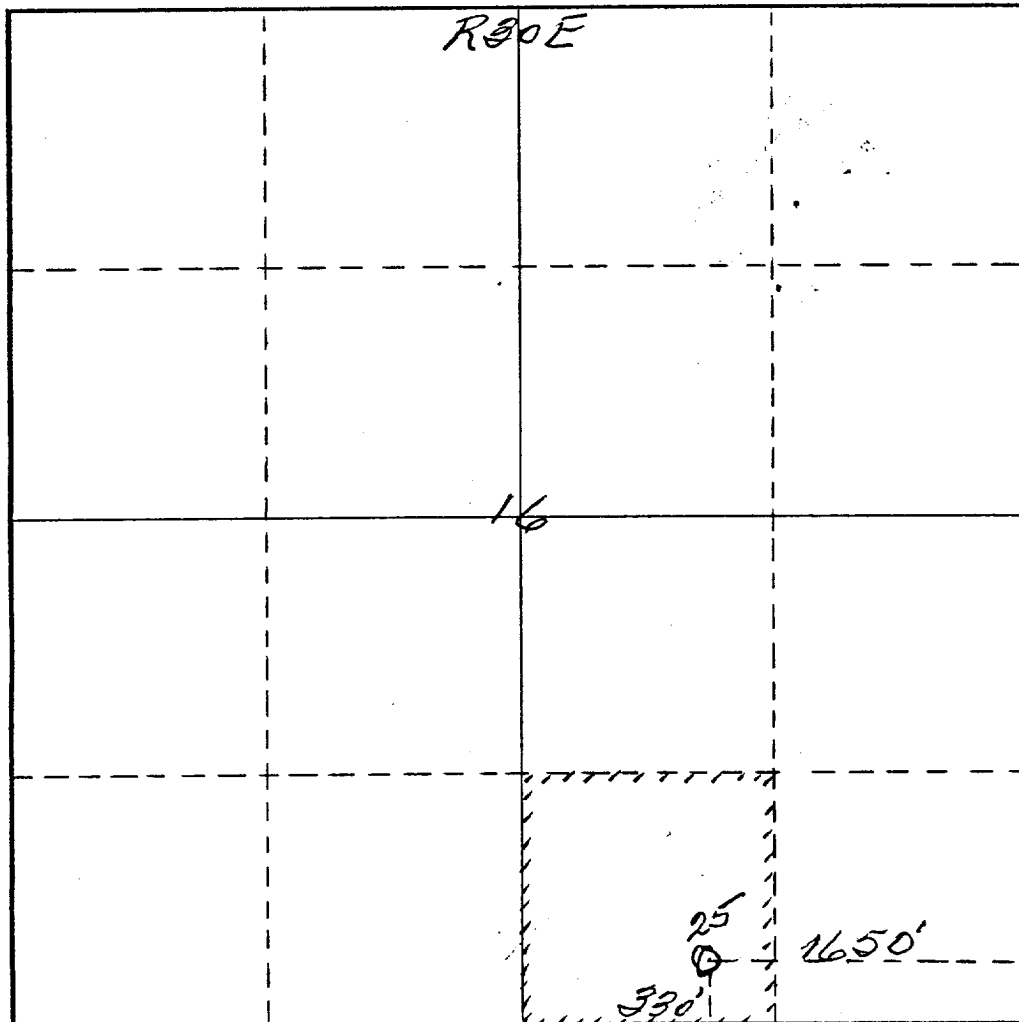
Operator <i>Texas American Oil Corp</i>			Lease <i>"J" State</i>		Well No. <i>25</i>
Unit Letter <i>0</i>	Section <i>16</i>	Township <i>17 South</i>	Range <i>30 East</i>	County <i>Eddy</i>	
Actual Footage Location of Well: <i>330</i> feet from the <i>South</i> line and <i>1650</i> feet from the <i>East</i> line					
Ground Level Elev. <i>3676</i>	Producing Formation <i>Queen- Grayburg</i>		Pool <i>Grayburg Jackson</i>		Dedicated Acreage: <i>40</i> Acres

1. Outline the acreage dedicated to the subject well by colored pencil or hachure marks on the plat below.
2. If more than one lease is dedicated to the well, outline each and identify the ownership thereof (both as to working interest and royalty).
3. If more than one lease of different ownership is dedicated to the well, have the interests of all owners been consolidated by communitization, unitization, force-pooling, etc?

☐ Yes ☐ No If answer is "yes," type of consolidation \_\_\_\_\_

If answer is "no," list the owners and tract descriptions which have actually been consolidated. (Use reverse side of this form if necessary.) \_\_\_\_\_

No allowable will be assigned to the well until all interests have been consolidated (by communitization, unitization, forced-pooling, or otherwise) or until a non-standard unit, eliminating such interests, has been approved by the Commission.



CERTIFICATION

I hereby certify that the information contained herein is true and complete to the best of my knowledge and belief.

Name  
*N. T. Emanuel*  
Position  
*Engineer*  
Company *Texas American Oil Corporation*

Date  
*May 9, 1974*

I hereby certify that the well location shown on this plat was plotted from field notes of actual surveys made by me or under my supervision, and that the same is true and correct to the best of my knowledge and belief.

Date Surveyed  
*May 4th 1974*  
Registered Professional Engineer and/or Land Surveyor

*James H. Brown*  
Certificate No. *542*