

NEW MEXICO OIL CONSERVATION COMMISSION
WELL LOCATION AND ACREAGE DEDICATION PLAT

Form C-102
Supersedes C-128
Effective 11-65

All distances must be from the outer boundaries of the Section

GENERAL OPERATING COMPANY		Lease Stevens Federal		Well No. 1
"G"	35	Township 17 South	Range 30 East	County Eddy
1650	feet from the North	line and	1980	feet from the East
3575 <i>gl</i>		Acres	Dedicated Acreage: 40	

The acreage dedicated to the subject well by colored pencil or hatchure marks on the plat below.

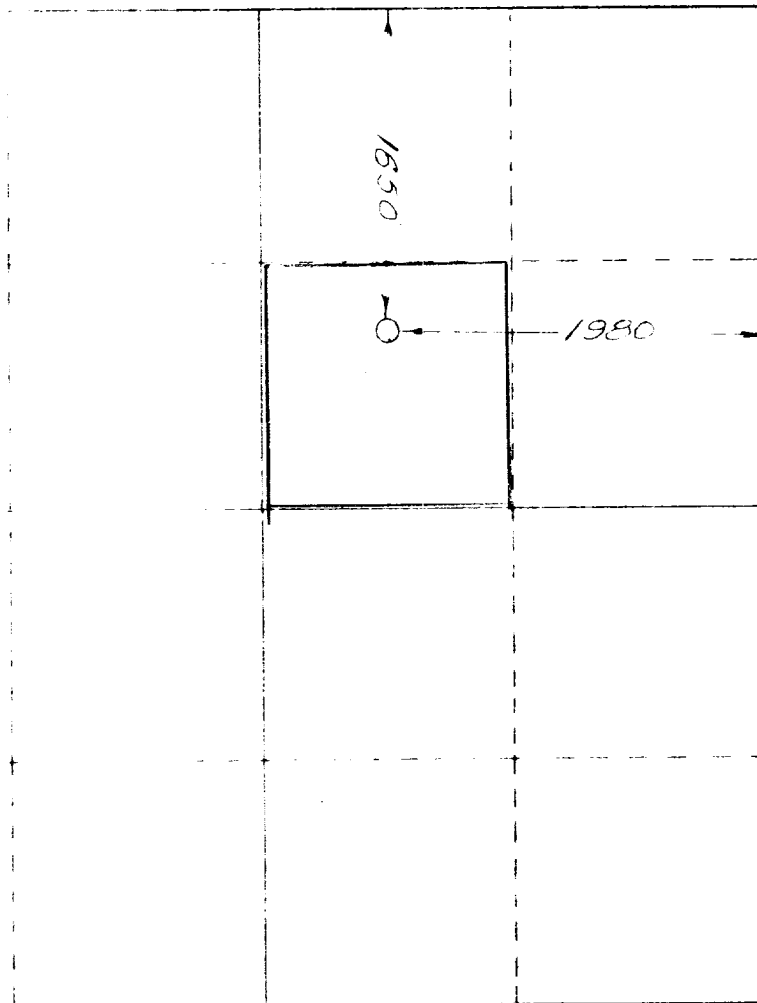
If the lease is dedicated to the well, outline each and identify the ownership thereof (both as to working interest and royalty)

If the lease of different ownership is dedicated to the well, have the interests of all owners been consolidated by communitization, unitization, force-pooling, etc?

No. If answer is "yes," type of consolidation _____

List the owners and tract descriptions which have actually been consolidated. (Use reverse side of this plat if necessary)

Will be assigned to the well until all interests have been consolidated (by communitization, unitization, force-pooling, etc) or until a non-standard unit, eliminating such interests, has been approved by the Commission



CERTIFICATION

I hereby certify that the information contained herein is true and complete to the best of my knowledge and belief.

Name *Chandler Haygood*
Position **Partner**
Company **General Operating Co.**
Date **May 16, 1974**

I hereby certify that the well location shown on this plat was plotted from field notes of actual surveys made by me or under my supervision, and that the same is true and correct to the best of my knowledge and belief.

Date Survey **May 15, 1974**
Registered Professional Engineer and/or Land Surveyor
James H. Jones
Certificate No. **3640**
State of New Mexico
LAND SURVEYOR

0 500 1000 1500 2000 2500 3000 3500 4000