

NE XICO OIL CONSERVATION COMMISSION
WELL LOCATION AND ACREAGE DEDICATION PLAT

Form C-10,
Supersedes C-128
Effective 1-1-65

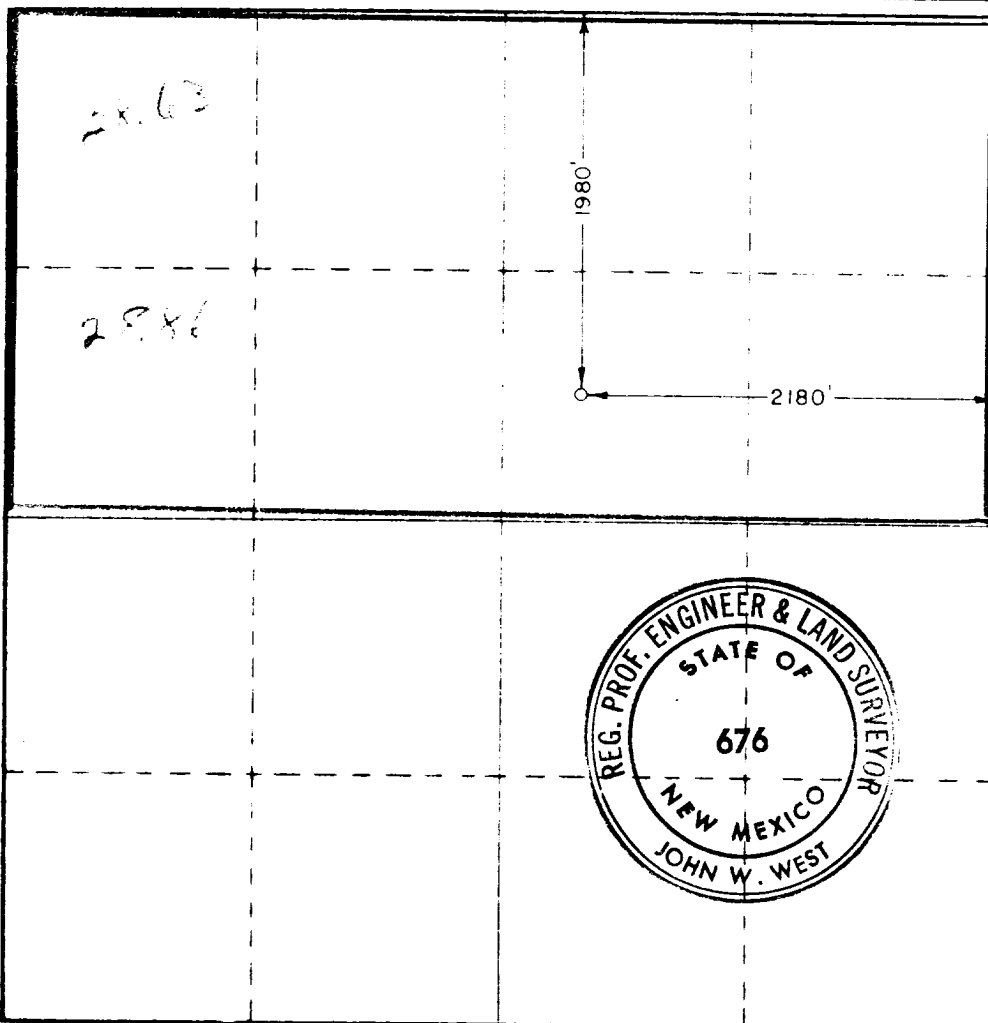
All distances must be from the outer boundaries of the Section

Operator MIDWEST OIL CORPORATION		Lease <i>South</i> SOUTH EMPIRE DEEP UNIT		Well No. 5
Unit Letter G	Section 31	Township 17 SOUTH	Range 29 EAST	County EDDY
Actual Footage Location of Well: 1980 feet from the NORTH line and 2180 feet from the EAST line				
Ground Level Elev. 3640.1	Producing Formation Morrow	Pool <i>U.S.</i> S. Empire/Morrow Gas	Dedicated Acreage N/2-320 Acres	

1. Outline the acreage dedicated to the subject well by colored pencil or hachure marks on the plat below.
2. If more than one lease is dedicated to the well, outline each and identify the ownership thereof (both as to working interest and royalty).
3. If more than one lease of different ownership is dedicated to the well, have the interests of all owners been consolidated by communitization, unitization, force-pooling, etc?
☐ Yes ☐ No If answer is "yes," type of consolidation _____

If answer is "no," list the owners and tract descriptions which have actually been consolidated. (Use reverse side of this form if necessary.) _____

No allowable will be assigned to the well until all interests have been consolidated (by communitization, unitization, forced-pooling, or otherwise) or until a non-standard unit, eliminating such interests, has been approved by the Commission.



CERTIFICATION

I hereby certify that the information contained herein is true and complete to the best of my knowledge and belief.

Bonnie Husband
Name

Bonnie Husband

Production Clerk

Midwest Oil Corp.

6-19-74

RECEIVED
JUN 25 1974
U.S. GEOLOGICAL SURVEY
ARTESIA, NEW MEXICO

Date Surveyed

JUNE 12, 1974

Registered Professional Engineer and Land Surveyor

John W. West
Certificate No.

676

