

**NEW MEXICO OIL CONSERVATION COMMISSION
WELL LOCATION AND ACREAGE DEDICATION PLAT**

Form C-102
Supersedes C-128
Effective 1-1-65

All distances must be from the outer boundaries of the Section.

Lease Windfohr Oil Company		Lease Jackson "B"		Well No. 29
Section K	Section 1	Township 17 South	Range 30 East	County Eddy
Approximate Location of Well:				
1980	feet from the South	line and	1830	feet from the West line
Ground Elev. 3700	Producing Formation Grayburg-San Andres	Pool Square Lake	Dedicated Acreage: 40 Acres	

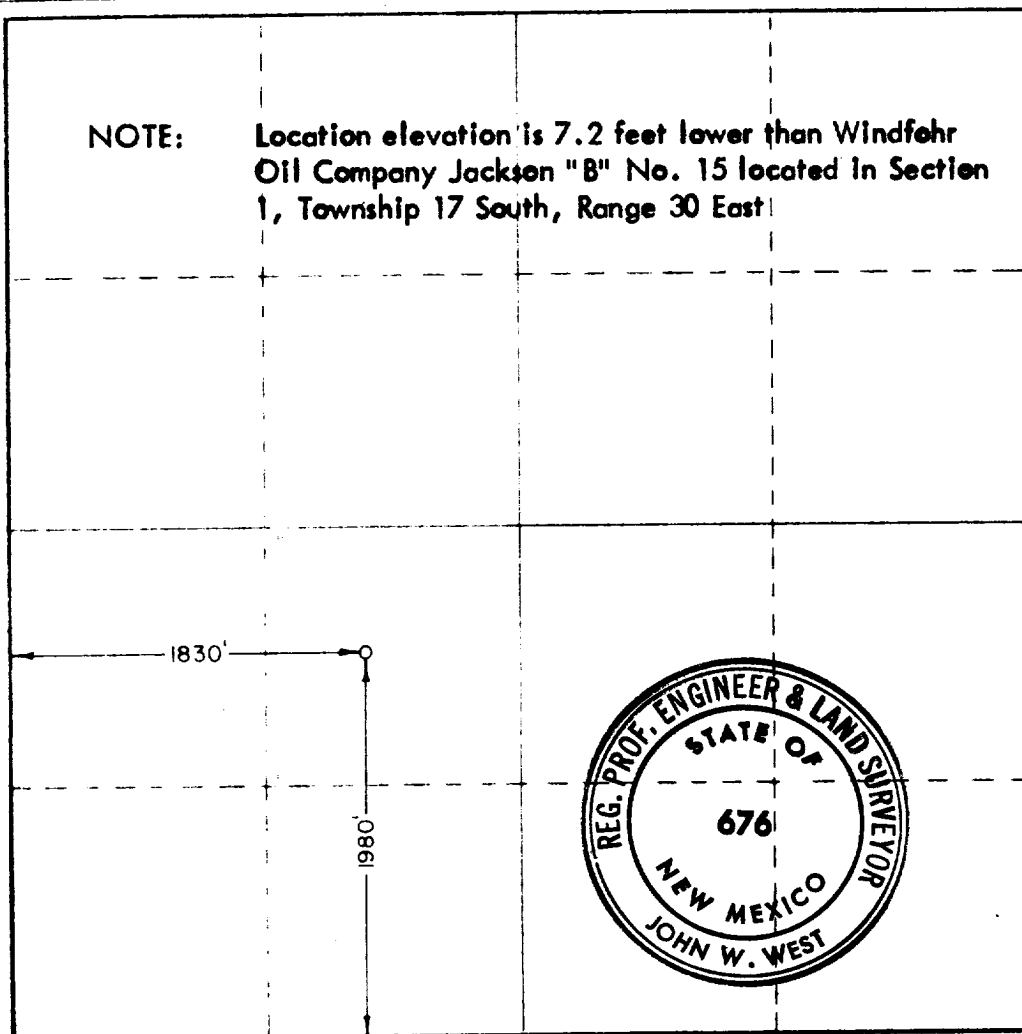
1. Outline the acreage dedicated to the subject well by colored pencil or hachure marks on the plat below.
2. If more than one lease is dedicated to the well, outline each and identify the ownership thereof (both as to working interest and royalty)
3. If more than one lease of different ownership is dedicated to the well, have the interests of all owners been consolidated by communitization, unitization, force-pooling, etc?

☐ Yes ☐ No If answer is "yes," type of consolidation _____

If answer is "no," list the owners and tract descriptions which have actually been consolidated. (Use reverse side of this form if necessary) _____

No allowable will be assigned to the well until all interests have been consolidated (by communitization, unitization, forced-pooling, or otherwise) or until a non-standard unit, eliminating such interests, has been approved by the Commission.

NOTE: Location elevation is 7.2 feet lower than Windfohr Oil Company Jackson "B" No. 15 located in Section 1, Township 17 South, Range 30 East



CERTIFICATION

I hereby certify that the information contained herein is true and complete to the best of my knowledge and belief.

WINDEFOHR OIL COMPANY

Name *Ralph L. Gray*
Position
Consulting Engineer

Company
WINDFOHR OIL COMPANY

Date
July 9, 1974

RECEIVED
JUL 11 1974

I hereby certify that the information shown on this plat was plotted from field notes of actual surveys made by me or under my supervision, and that the same is true to the best of my knowledge and belief.

Date Surveyed
July 2, 1974

Registered Professional Engineer and/or Land Surveyor

John W. West
Certificate No. **676**

