

30-015-21333

RECEIVED

NEW MEXICO OIL CONSERVATION COMMISSION Form C-101 Revised 1-1-65

AUG 16 1974

D.C.S.
ARTIFICIAL LIFT

NO. OF COPIES RECEIVED	6
DISTRIBUTION	
SANTA FE	1
FILE	1
U.S.G.S.	2
LAND OFFICE	1
OPERATOR	1

5A. Indicate Type of Lease	
STATE <input checked="" type="checkbox"/>	FEE <input type="checkbox"/>
5. State Oil & Gas Lease No.	
B-936	
7. Unit Agreement Name	
8. Farm or Lease Name	
Etz State	
9. Well No.	
26	
10. Field and Pool, or Wildcat	
Grayburg Jackson	
12. County	
Eddy	
18. Proposed Depth	19A. Formation
2850	Q-GB
20. Rotary or C.T.	
Cable Tools	
21. Elevations (Show whether DF, RT, etc.)	21A. Kind & Status Plug. Bond
3663 GR	J. S. Ward & Son
21B. Drilling Contractor	
Cortez Drilling Co.	
22. Approx. Date Work will start	
September 1, 1974	

APPLICATION FOR PERMIT TO DRILL, DEEPEN, OR PLUG BACK

1a. Type of Work	
DRILL <input checked="" type="checkbox"/>	DEEPEN <input type="checkbox"/>
b. Type of Well	
OIL WELL <input checked="" type="checkbox"/>	GAS WELL <input type="checkbox"/>
OTHER <input type="checkbox"/>	
2. Name of Operator	
Texas American Oil Corporation	
3. Address of Operator	
1012 Midland Savings Building, Midland, Texas 79701	
4. Location of Well	
UNIT LETTER K	LOCATED 1650 FEET FROM THE South LINE
AND 2310 FEET FROM THE West	LINE OF SEC. 16 TWP. 17S RGE. 30E NMPM
15. Proposed Depth	
2850	
19A. Formation	
Q-GB	
20. Rotary or C.T.	
Cable Tools	
21. Elevations (Show whether DF, RT, etc.)	
3663 GR	
21A. Kind & Status Plug. Bond	
J. S. Ward & Son	
21B. Drilling Contractor	
Cortez Drilling Co.	
22. Approx. Date Work will start	
September 1, 1974	

23. PROPOSED CASING AND CEMENT PROGRAM

SIZE OF HOLE	SIZE OF CASING	WEIGHT PER FOOT	SETTING DEPTH	SACKS OF CEMENT	EST. TOP
10"	8-5/8"	20#	475	150	Circ
8"	4-1/2"	10.50#	2850	450	1200

APPROVAL VALID
FOR 90 DAYS UNLESS
DRILLING COMMENCED,
EXPIRES 11-20-74

IN ABOVE SPACE DESCRIBE PROPOSED PROGRAM: IF PROPOSAL IS TO DEEPEN OR PLUG BACK, GIVE DATA ON PRESENT PRODUCTIVE ZONE AND PROPOSED NEW PRODUCTIVE ZONE. GIVE BLOWOUT PREVENTER PROGRAM, IF ANY.

I hereby certify that the information above is true and complete to the best of my knowledge and belief.

Signed J. E. Emanuel Title Engineer Date August 13, 1974

(This space for State Use)

APPROVED BY W. A. Gressett TITLE OIL AND GAS INSPECTOR DATE AUG 20 1974

CONDITIONS OF APPROVAL, IF ANY:

NEW MEXICO OIL CONSERVATION COMMISSION
WELL LOCATION AND ACREAGE DEDICATION PL

Form C-102
Supersedes C-128
Effective 1-1-65

All distances must be from the outer boundaries of the Section.

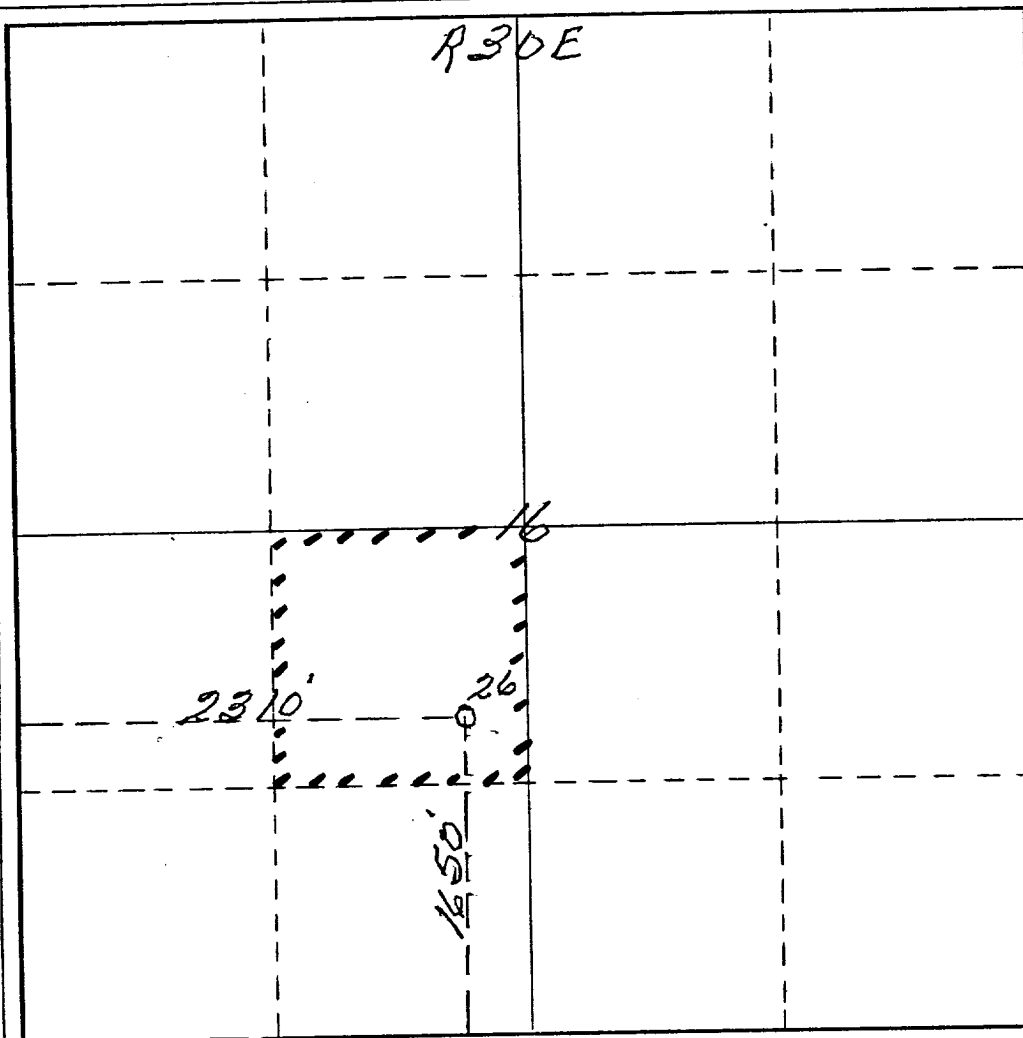
Operator <i>Texas American Oil Corp</i>			Lease <i>Etz State</i>		Well No. <i>26</i>
Unit Letter <i>K</i>	Section <i>16</i>	Township <i>17 South</i>	Range <i>30 East</i>	County <i>Eddy</i>	
Actual Footage Location of Well: <i>1650</i> feet from the <i>South</i> line and <i>2310</i> feet from the <i>West</i> line					
Ground Level Elev. <i>3663</i>	Producing Formation <i>Queen and Grayburg</i>		Pool <i>Grayburg Jackson</i>		Dedicated Acreage: <i>40</i> Acres

1. Outline the acreage dedicated to the subject well by colored pencil or hachure marks on the plat below.
2. If more than one lease is dedicated to the well, outline each and identify the ownership thereof (both as to working interest and royalty).
3. If more than one lease of different ownership is dedicated to the well, have the interests of all owners been consolidated by communitization, unitization, force-pooling, etc?

☐ Yes ☐ No If answer is "yes," type of consolidation _____

If answer is "no," list the owners and tract descriptions which have actually been consolidated. (Use reverse side of this form if necessary.) _____

No allowable will be assigned to the well until all interests have been consolidated (by communitization, unitization, forced-pooling, or otherwise) or until a non-standard unit, eliminating such interests, has been approved by the Commission.



CERTIFICATION

I hereby certify that the information contained herein is true and complete to the best of my knowledge and belief.

Name
N. T. Emanuel
Position
Engineer
Company
Texas American Oil Corp.
Date
August 13, 1974

I hereby certify that the well location shown on this plat was plotted from field notes, actual surveys made by me or under supervision, and that the same is true and correct to the best of my knowledge and belief.

Date Surveyed
August 8th 1974
Registered Professional Engineer
and/or Land Surveyor

James H. Brown
Certificate No. *542*

0 330 660 990 1320 1650 1980 2310 2640 2000 1500 1000 500 0