

NO. OF COPIES RECEIVED	6
DISTRIBUTION	
SANTA FE	
FILE	
U.S.G.S.	
LAND OFFICE	
OPERATOR	

NEW MEXICO OIL CONSERVATION COMMISSION

**RECEIVED**

SEP 17 1975

30-015-21333

Form C-101  
Revised 1-1-65

5A. Indicate Type of Lease

STATE ☒ FEE ☐

5. State Oil & Gas Lease No.

B-936

**APPLICATION FOR PERMIT TO DRILL, DEEPEN, OR PLUG BACK**

1a. Type of Work DRILL <input checked="" type="checkbox"/> DEEPEN <input type="checkbox"/> PLUG BACK <input type="checkbox"/>		7. Unit Agreement Name	
b. Type of Well OIL WELL <input checked="" type="checkbox"/> GAS WELL <input type="checkbox"/> OTHER <input type="checkbox"/>		8. Farm or Lease Name Etz State	
2. Name of Operator Texas American Oil Corporation		9. Well No. 26	
3. Address of Operator 1012 Midland Savings Building, Midland, TX 79701		10. Field and Pool, or Wildcat Grayburg Jackson	
4. Location of Well UNIT LETTER <u>K</u> LOCATED <u>1625'</u> FEET FROM THE <u>South</u> LINE AND <u>2630'</u> FEET FROM THE <u>West</u> LINE OF SEC. <u>16</u> TWP. <u>17S</u> RGE. <u>30E</u> NMPM		12. County Eddy	
19. Proposed Depth 2850		19A. Formation Q-GB	
20. Rotary or C.T. Rotary		21. Elevations (Show whether DF, RT, etc.) 3674.6 GR	
21A. Kind & Status Plug. Bond J. S. Ward & Son		21B. Drilling Contractor WEK	
22. Approx. Date Work will start September 22, 1975			

**PROPOSED CASING AND CEMENT PROGRAM**

SIZE OF HOLE	SIZE OF CASING	WEIGHT PER FOOT	SETTING DEPTH	SACKS OF CEMENT	EST. TOP
10"	8-5/8"	20#	475	150	Circ
8"	4-1/2"	10.50#	2850	450	1200

APPROVAL VALID  
FOR 90 DAYS UNLESS  
DRILLING COMMENCED,

EXPIRES 12-22-75

IN ABOVE SPACE DESCRIBE PROPOSED PROGRAM: IF PROPOSAL IS TO DEEPEN OR PLUG BACK, GIVE DATA ON PRESENT PRODUCTIVE ZONE AND PROPOSED NEW PRODUCTIVE ZONE. GIVE BLOWOUT PREVENTER PROGRAM, IF ANY.

I hereby certify that the information above is true and complete to the best of my knowledge and belief.

Signed J. S. Ward Title Engineer Date September 16, 1975

(This space for State Use)

APPROVED BY W. A. Gressett TITLE SUPERVISOR, DISTRICT II DATE SEP 22 1975

CONDITIONS OF APPROVAL, IF ANY:

NEW MEXICO OIL CONSERVATION COMMISSION  
WELL LOCATION AND ACREAGE DEDICATION PLAT

Form O-122  
Supersedes O-128  
Effective 1-1-65

All distances must be from the outer boundaries of the Section

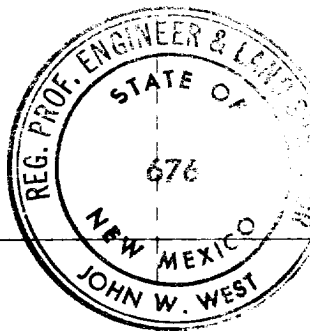
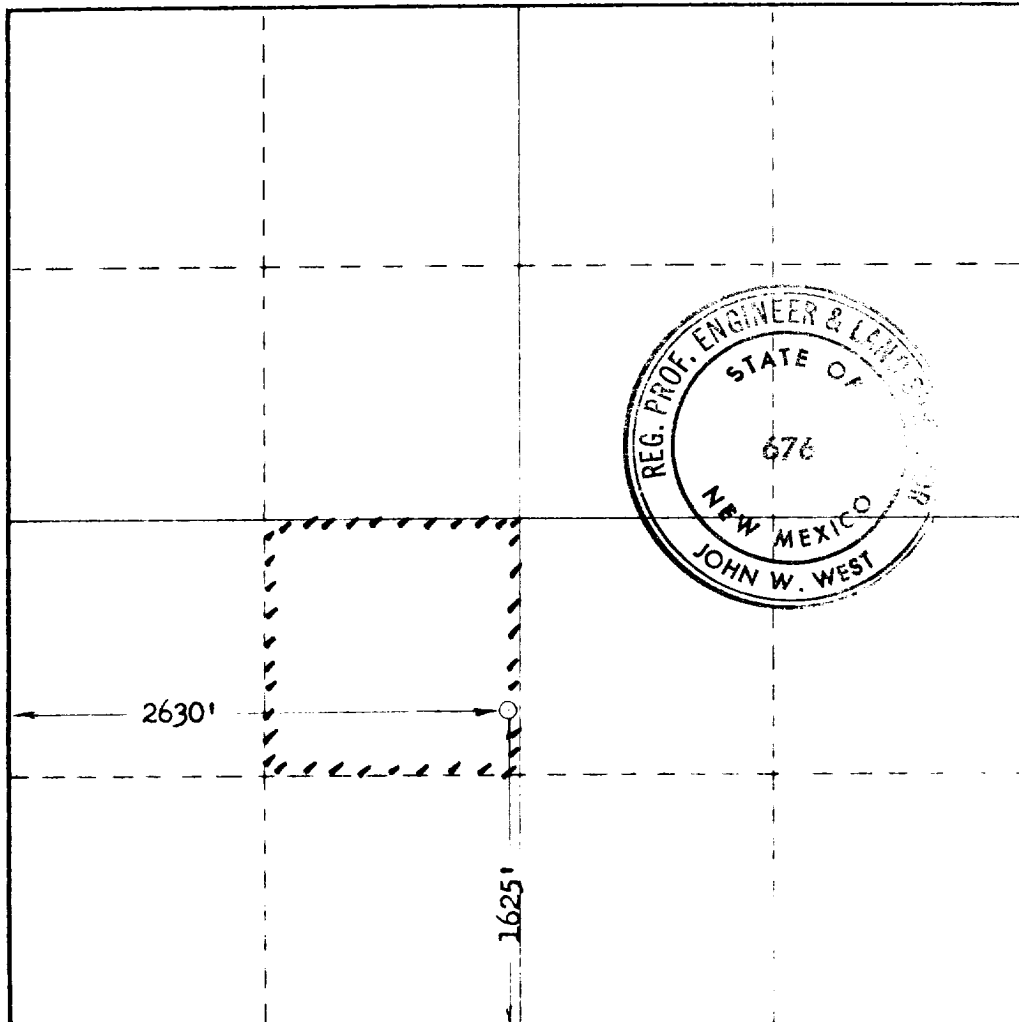
Operator <b>TEXAS AMERICAN OIL CORPORATION</b>			Lease <b>Etz-State</b>		Well <b>26</b>
Unit Letter <b>K</b>	Section <b>16</b>	Township <b>17 South</b>	Range <b>30 East</b>	County <b>Eddy</b>	
Actual Footage Location of Well: <b>1625</b> feet from the <b>south</b> line and <b>2630</b> feet from the <b>west</b> line					
Ground Level Elev. <b>3674.6</b>	Producing Formation <b>Q-GB</b>		Pool <b>Grayburg-Jackson</b>		<b>40</b>

1. Outline the acreage dedicated to the subject well by colored pencil or hachure marks on the plat below
2. If more than one lease is dedicated to the well, outline each and identify the ownership thereof (both as to working interest and royalty).
3. If more than one lease of different ownership is dedicated to the well, have the interests of all owners been consolidated by communitization, unitization, force-pooling, etc?

☐ Yes ☐ No If answer is "yes," type of consolidation \_\_\_\_\_

If answer is "no," list the owners and tract descriptions which have actually been consolidated. (Use reverse side of this form if necessary.) \_\_\_\_\_

No allowable will be assigned to the well until all interests have been consolidated (by communitization, unitization, forced-pooling, or otherwise) or until a non-standard unit, eliminating such interests, has been approved by the Commission.



CERTIFICATION

I hereby certify that the information contained herein is true and complete to the best of my knowledge and belief.

*J. L. Emanuel*  
Engineer  
Texas American Oil Corp  
9-17-75

I hereby certify that the well location shown on this plat was plotted from field notes of actual surveys made by me or under my supervision, and that the same is true and correct to the best of my knowledge and belief.

Sept. 16, 1975

*John W. West*  
676

TEXAS AMERICAN OIL CORPORATION

300 WEST WALL, SUITE 1012 MIDLAND, TEXAS 79701 915-683-4811

September 16, 1975

Mr. A. L. Porter, Jr.  
Secretary-Director  
New Mexico Oil Conservation Commission  
Post Office Box 2088  
Santa Fe, New Mexico 87501

RECEIVED

SEP 17 1975

O. C. C.  
ARTESIA, OFFICE

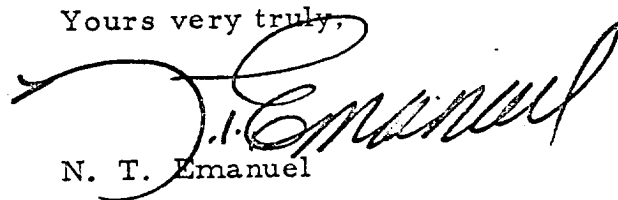
Re: Rule 104-Well Spacing  
Etz State, Well No. 26,  
1625' FSL & 2630' FWL,  
Section 16, T-17-S, R-30-E,  
Eddy County, New Mexico  
Grayburg Jackson Field

Dear Mr. Porter:

Application to drill the above named unorthodox location, based on topographical conditions, is submitted for your approval.

Waiver of objection from the only offset operator, C. E. Larue and B. N. Muncy, Jr., is attached.

Yours very truly,



N. T. Emanuel

cc

Attachment

# WELL LOCATION AND ACREAGE DEDICATION PLAT

Supervising Engineer  
Effective 1-1-75

All distances must be from the outer boundaries of the Section

Operator <b>TEXAS AMERICAN OIL CORPORATION</b>		Lease <b>Etz-State</b>		Acres <b>26</b>
Tract Letter <b>K</b>	Section <b>16</b>	Township <b>17 South</b>	Range <b>30 East</b>	County <b>Eddy</b>

Actual True North Location of Well:

**1625** feet from the **south** line and **2630** feet from the **west** line

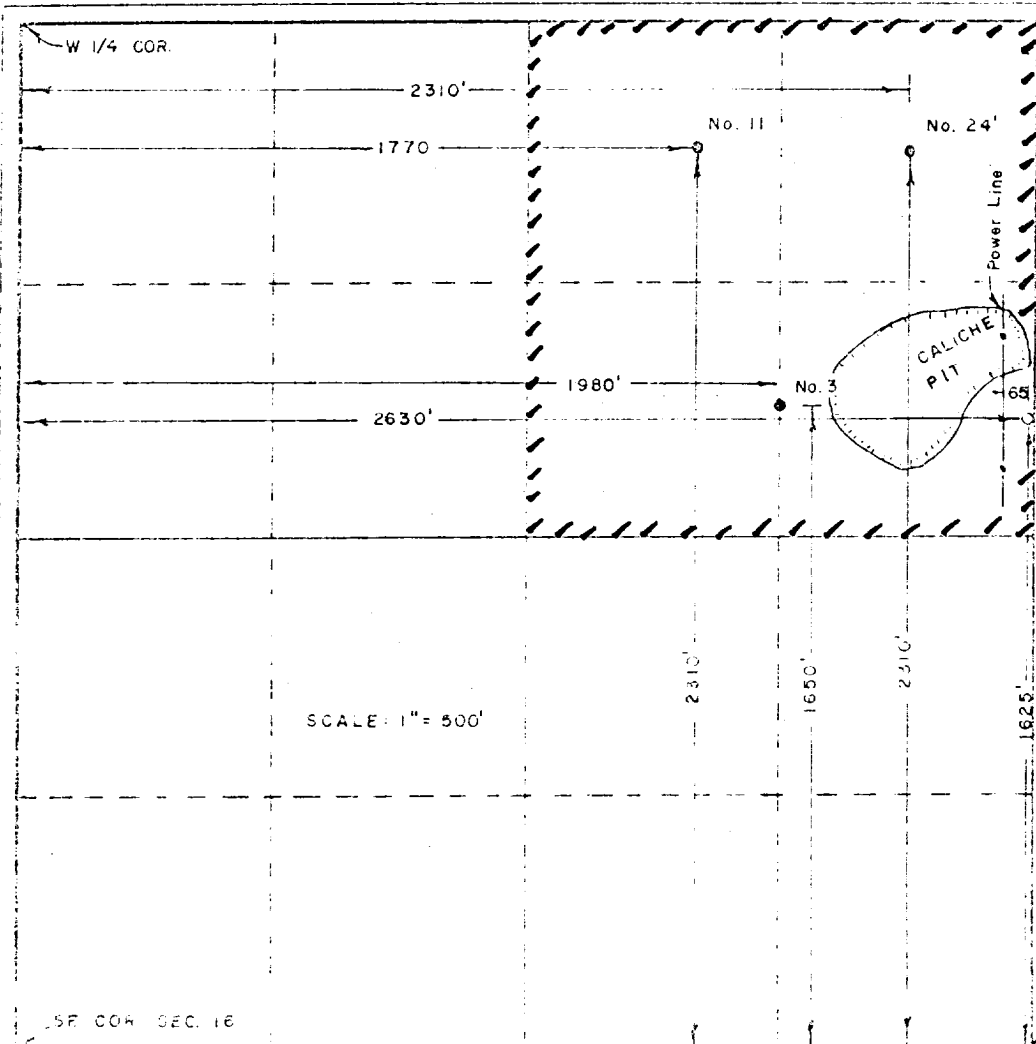
Ground Level Elev. **3674.6** Producing Formation **Q-GB** Pool **Grayburg Jackson** **40**

1. Outline the acreage dedicated to the subject well by colored pencil or hatchure marks on the plat below.
2. If more than one lease is dedicated to the well, outline each and identify the ownership (except as to working interest and royalty).
3. If more than one lease of different ownership is dedicated to the well, have the interests of all owners been consolidated by communitization, unitization, force-pooling, etc?

☐ Yes ☐ No If answer is "yes," type of consolidation \_\_\_\_\_

If answer is "no," list the owners and tract descriptions which have actually been consolidated (Use reverse side of this form if necessary.) \_\_\_\_\_

No allowable will be assigned to the well until all interests have been consolidated (by communitization, unitization, forced-pooling, or otherwise) or until a non-standard unit, eliminating such interests, has been approved by the Commission.

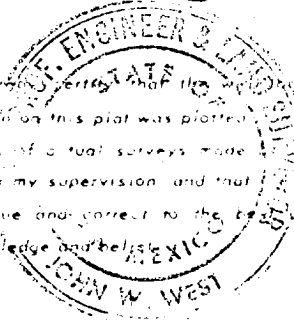


## CERTIFICATION

I hereby certify that the information contained herein is true and complete to the best of my knowledge and belief.

*J. Emanuel*  
**Engineer**  
**Texas American Oil Corp**  
**9-17-75**

I hereby certify that the information shown on this plat was plotted from notes of actual surveys made under my supervision and that the same is true and correct to the best of my knowledge and belief.



Sept. 16, 1975

SE 1/4 COR

*John W. West*

**OIL CONSERVATION COMMISSION**

P. O. BOX 2088

SANTA FE, NEW MEXICO 87501

September 19, 1975

**RECEIVED**

**SEP 22 1975**

Texas American Oil Corporation  
200 West Wall, Suite 1012  
Midland, Texas 79701

**O. C. C.**  
**ARTESIA, OFFICE**

Attention: N. T. Emanuel

Administrative Order ASL-725

Gentlemen:

Reference is made to your application for approval of a non-standard location for your State Well No. 26, located 1625 feet from the South line and 2630 feet from the West line of Section 16, Township 17 South, Range 30 East, NMPM, Grayburg Jackson Field, Sddy County, New Mexico.

Waivers of objection have been received from offsetting operators and the waiting period prescribed by Rule 104 F may be dispensed with in this instance.

By authority granted me under the provisions of Rule 104 F of the Commission Rules and Regulations, the above-described unorthodox location is hereby approved.

Very truly yours,

JOE D. RAMEY  
Secretary-Director

JDR/JER/jr

cc: Oil Conservation Commission - Artesia  
Oil & Gas Engineering Committee - Hobbs  
State Land Office - Santa Fe