

**MEXICO OIL CONSERVATION COMMISSION
WELL LOCATION AND ACREAGE DEDICATION PLAT**

Form No. 1
Superseded 6-1-78
Effective 1-1-75

All distances must be from the outer boundaries of the Section

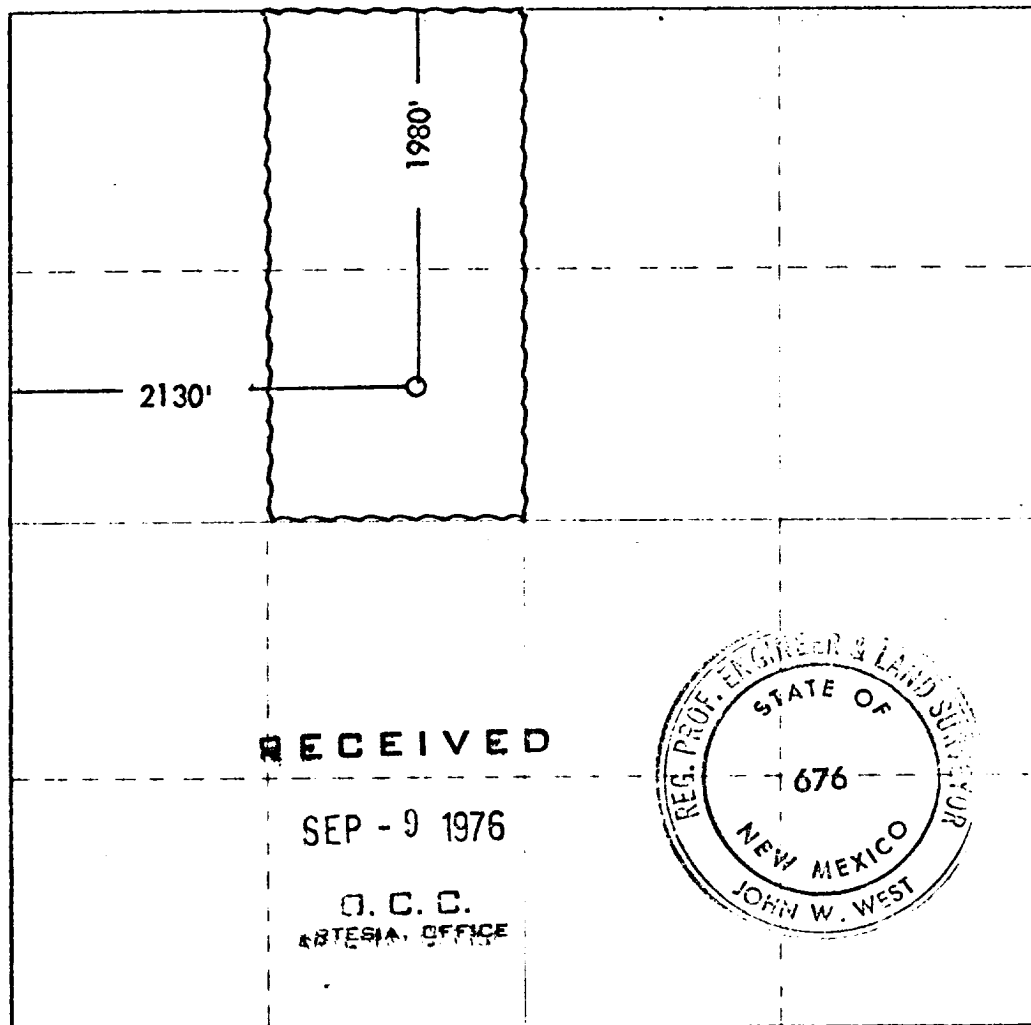
Operator Amoco Production Company			Section Empire South Deep Unit			Area 11
Section F	Section 32	Section 17 South	Section 29 East	Section Eddy		
Date 1980		Feet from true North 2130		Feet from true West 1980		
Acres 3595.1		Name of well WOLF CAMP		Name of unit EMPIRE SOUTH WOLF CAMP		Section 80

1. Outline the acreage dedicated to the subject well by colored pencil or hatchure marks on the plat below.
2. If more than one lease is dedicated to the well, outline each and identify the ownership thereof (both as to working interest and royalty).
3. If more than one lease of different ownership is dedicated to the well, have the interests of all owners been consolidated by communitization, unitization, force-pooling, etc?

☐ Yes ☐ No If answer is "yes," type of consolidation **UNITIZED**

If answer is "no," list the owners and tract descriptions which have actually been consolidated. (Use reverse side of this form if necessary.) _____

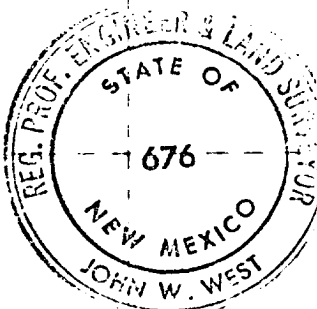
No allowable will be assigned to the well until all interests have been consolidated (by communitization, unitization, forced-pooling, or otherwise) or until a non-standard unit, eliminating such interests, has been approved by the Commission.



RECEIVED

SEP - 9 1976

**O. C. C.
ARTESIA OFFICE**



CERTIFICATION

I hereby certify that the information obtained herein is true and complete to the best of my knowledge and belief.

Ray W. Cox
Administrative Assistant

AMOCO PRODUCTION COMPANY

9-7-76

I hereby certify that the well location shown on this plat was plotted from field notes of actual surveys made by me or under my supervision, and that the same is true and correct to the best of my knowledge and belief.

Sept 2, 1976

Registered Professional Engineer
and Land Surveyor

John W. West
676

330 660 990 1320 1650 1980 2310 2640 2970 3300 3630 3960 4290 4620 4950 5280 5610 5940 6270 6600 6930 7260 7590 7920 8250 8580 8910 9240 9570 9900