

UNITED STATES
DEPARTMENT OF THE INTERIOR
GEOLOGICAL SURVEY

(Other instructions on reverse side)

Project No. 30-015-22494

APPLICATION FOR PERMIT TO DRILL, DEEPEN, OR PLUG BACK

1a. TYPE OF WORK
DRILL ☒ DEEPEN ☐ PLUG BACK ☐

b. TYPE OF WELL
OIL WELL ☒ GAS WELL ☐ OTHER ☐ SINGLE ZONE ☒ MULTIPLE ZONE ☐

2. NAME OF OPERATOR
Getty Oil Company

3. ADDRESS OF OPERATOR
P. O. Box 730; Hobbs, New Mexico 88240

4. LOCATION OF WELL (Report location clearly and in accordance with any State requirements)
At surface
At proposed prod. zone 2130 FSL & 1980 FWL

14. DISTANCE IN MILES AND DIRECTION FROM NEAREST TOWN OR POST OFFICE
5 miles Southwest of Maljamar, N.M.

15. DISTANCE FROM PROPOSED LOCATION TO NEAREST PROPERTY OR LEASE LINE, FT. (Also to nearest drlg. unit line, if any)
1880

18. DISTANCE FROM PROPOSED LOCATION TO NEAREST WELL, DRILLING, COMPLETED, OR APPLIED FOR, ON THIS LEASE, FT.
150

21. ELEVATIONS (Show whether DF, RT, GR, etc.)
3867 GR

23. PROPOSED CASING AND CEMENTING PROGRAM

SIZE OF HOLE	SIZE OF CASING	WEIGHT PER FOOT	SETTING DEPTH	QUANTITY OF CEMENT
12 1/2	8 5/8 K-55	24	700	290 SXS
7 7/8	5 1/2 K-55	14	2660	

* To be determined by caliper log

- The geologic surface formation is Triassic redbeds with a coverage of Quaternary sand dunes.
- The estimated tops of important geologic markers are:
 - anhydrite - 400'
 - salt top - 600'
 - salt base - 1600'
 - yates - 1750'
 - Seven Rivers 2100'
- The estimated depths for oil and gas production will be from 2100' to TD.
- The above casing program will be new casing.
- See reverse side for control equipment schematics.
- Will use approximately 500 bbls. total of 10.5% brine water from surface to TD.
- A sub will be on the floor @ all times w/full opening valve.
- A possibility of coring from 2100 to T.D. Decision to be made at a later date. Logging will be CNL-FDC and DLL-RXO. Will run temperature survey to determine cement top behind 5 1/2 casing.
- No abnormal pressures or temperatures or H2S gas expected.
- Anticipate starting in latter half of 3rd quarter 1978 w/a duration of 5 days.

RECEIVED

MAR 7-1978

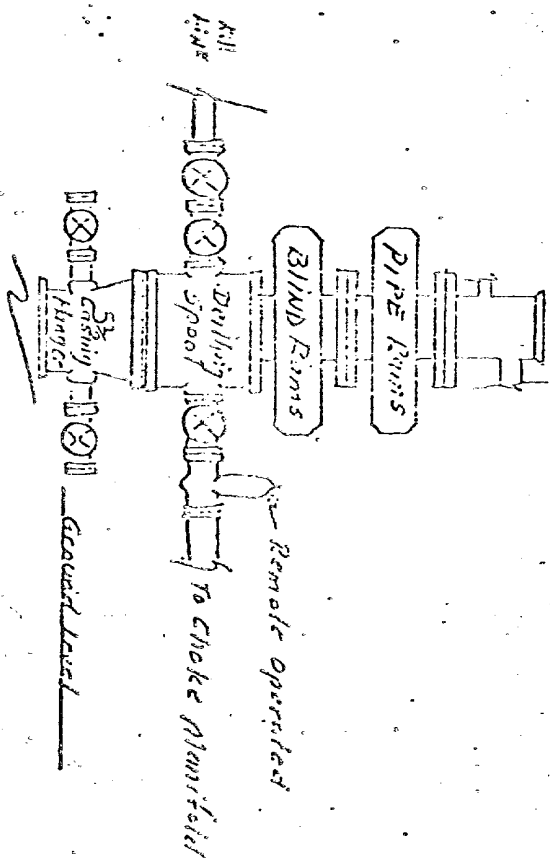
U.S. GEOLOGICAL SURVEY
ARTESIA, NEW MEXICO

APPROVED BY: [Signature] TITLE: Area Superintendent DATE: APR 10 1978

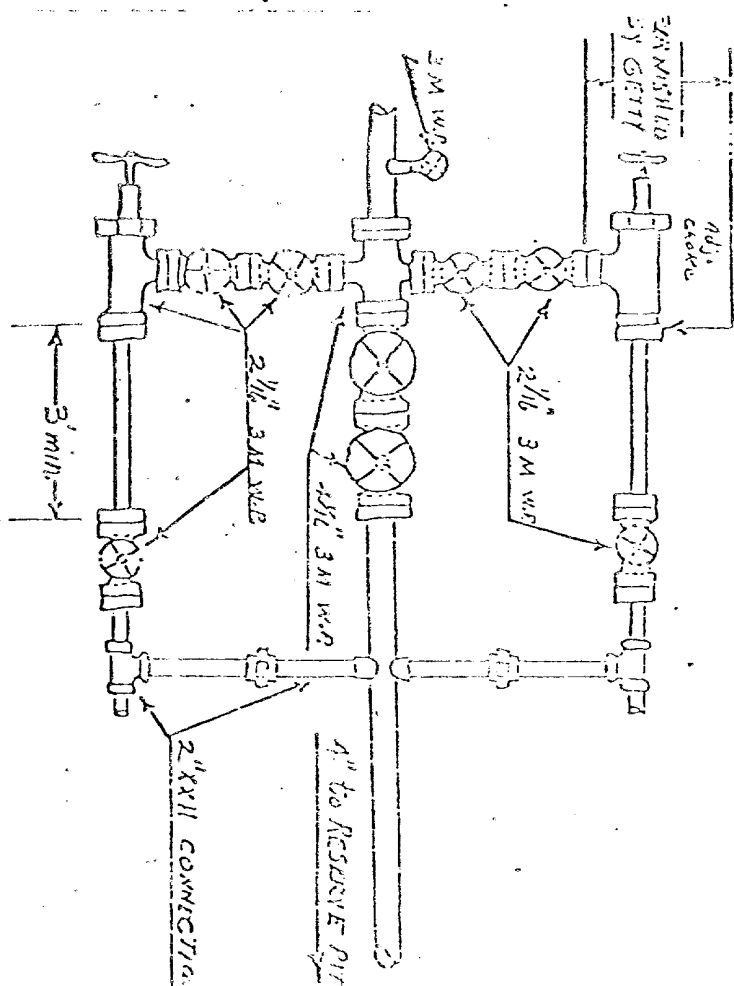
APPROVED BY: [Signature] TITLE: ACTING DISTRICT ENGINEER DATE: APR 10 1978

THIS APPROVAL IS RESCINDED IF OPERATIONS ARE NOT COMMENCED WITHIN 3 MONTHS.
EXPIRES JUL 10 1978

Rotating Head, if Necessary,
Furnished By Getty



All 3000 psi W.P.



MANIFOLD SHOWN IS MINIMUM THAT IS ACCEPTABLE

151

NEW MEXICO OIL CONSERVATION COMMISSION
WELL LOCATION AND ACREAGE DEDICATION PLAT

Form C-102
Supersedes C-128
Effective 1-1-65

All distances must be from the outer boundaries of the Section.

Operator GETTY OIL COMPANY			Lease Skelly Unit		Well No. 151
Unit Letter K	Section 15	Township 17 South	Range 31 East	County Eddy	
Actual Footage Location of Well: <div style="display: flex; justify-content: space-between;"> 2130 feet from the South line and 1980 feet from the West line </div>					
Ground Level Elev. 3867	Producing Formation 7-Rivers	Pool Fren	Dedicated Acreage: 40 Acres		

1. Outline the acreage dedicated to the subject well by colored pencil or hachure marks on the plat below.
2. If more than one lease is dedicated to the well, outline each and identify the ownership thereof (both as to working interest and royalty).
3. If more than one lease of different ownership is dedicated to the well, have the interests of all _____ been consolidated by communitization, unitization, force-pooling, etc?

☐ Yes ☐ No If answer is "yes," type of consolidation _____

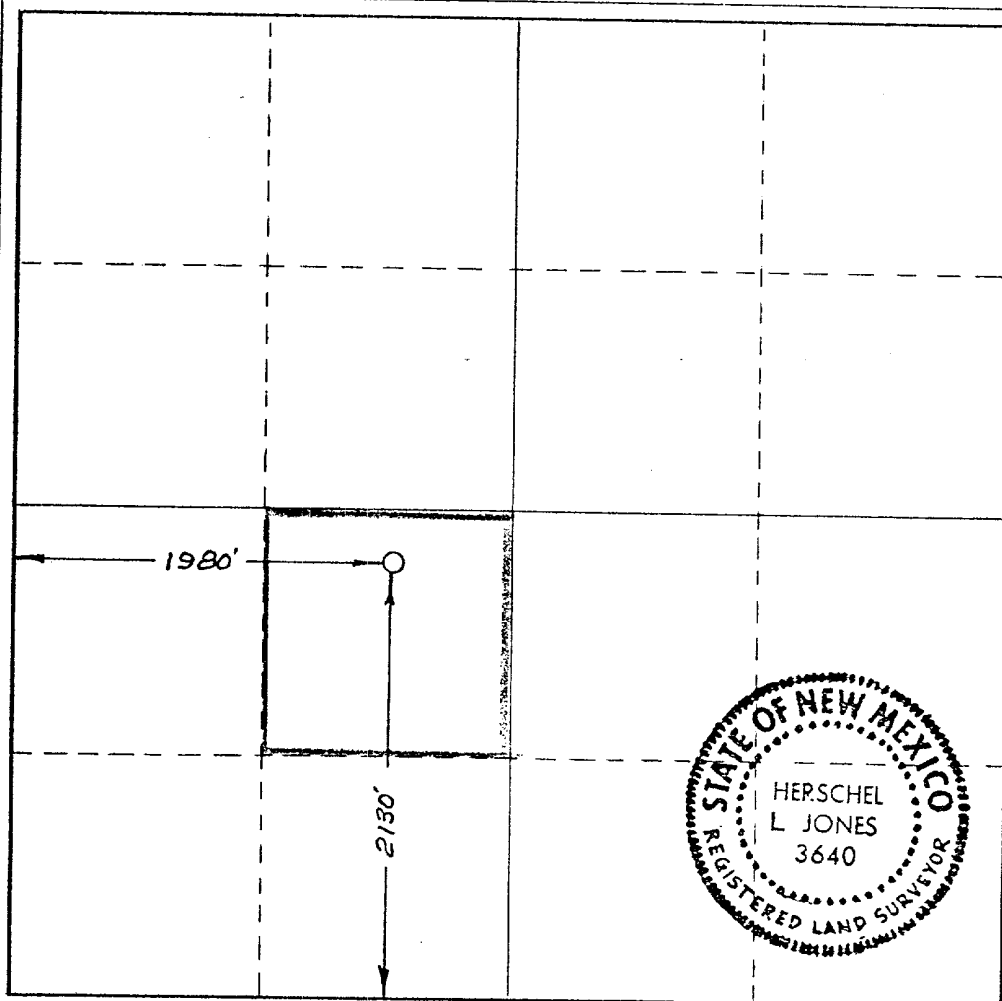
If answer is "no," list the owners and tract descriptions which have actually been consolidated. (Use reverse side of this form if necessary.) _____

No allowable will be assigned to the well until all interests have been consolidated (by communitization, unitization, forced-pooling, or otherwise) or until a non-standard unit, eliminating such interests, has been approved by the Commission.

RECEIVED

MAR 7 - 1978

**U.S. GEOLOGICAL SURVEY
ARTESIA, NEW MEXICO**



CERTIFICATION

I hereby certify that the information contained herein is true and complete to the best of my knowledge and belief.

Name

Dale R. Crockett

Position

Area Superintendent

Company

Getty Oil Company

Date

March 6, 1978

I hereby certify that the well location shown on this plat was plotted from field notes of actual surveys made by me or under my supervision, and that the same is true and correct to the best of my knowledge and belief.

Date Surveyed

February 23, 1978

Registered Professional Engineer
and/or Land Surveyor

Herschel L. Jones
Certificate No. **3640**

0 330 660 990 1320 1650 1980 2310 2640 2970 3300 3630 3960 4290 4620 4950 5280 5610 5940 6270 6600

