

INMOCG COPY
UNITED STATESSUBMIT IN TRIPLICATE
(Other Instructions on
reverse)Form Approved
7-74-11425DEPARTMENT OF THE INTERIOR
GEOLOGICAL SURVEY

APPLICATION FOR PERMIT TO DRILL, DEEPEN, OR PLUG BACK

1a. TYPE OF WORK

DRILL ☒DEEPEN ☐PLUG BACK ☐

b. TYPE OF WELL

OIL
WELL ☒GAS
WELL ☐

OTHER

SINGLE
ZONE ☒MULTIPLE
ZONE ☐

2. NAME OF OPERATOR

Getty Oil Company

3. ADDRESS OF OPERATOR

P. O. Box 730; Hobbs, New Mexico 88240

4. LOCATION OF WELL (Report location clearly and in accordance with any State requirements.)

At surface

At proposed prod. zone

1830 FSL & 660 FWL

RECEIVED

APR 11 1978

D. C. C.

ARTESIA, OFFICE

13. DISTANCE IN MILES AND DIRECTION FROM NEAREST TOWN OR POST OFFICE*

5 miles Southwest of Maljamar, N.M.

15. DISTANCE FROM PROPOSED*

LOCATION TO NEAREST
PROPERTY OR LEASE LINE, FT.
(Also to nearest drlg. unit line, if any)

660

16. NO. OF ACRES IN LEASE

4040

17. NO. OF ACRES ASSIGNED
TO THIS WELL

40

18. DISTANCE FROM PROPOSED LOCATION*

TO NEAREST WELL, DRILLING, COMPLETED,
OR APPLIED FOR, ON THIS LEASE, FT.

150

19. PROPOSED DEPTH

2650

20. ROTARY OR CABLE TOOLS

Rotary

21. ELEVATIONS (Show whether DF, RT, GR, etc.)

3863 GR

22. APPROX. DATE WORK WILL START*

AUG, 1978

23. PROPOSED CASING AND CEMENTING PROGRAM

SIZE OF HOLE	SIZE OF CASING	WEIGHT PER FOOT	SETTING DEPTH	QUANTITY OF CEMENT
12 1/2	8 5/8 K-55	24	700	290 SXS
7 7/8	5 1/2 K-55	14	2650	A

* - to be determined by caliper log.

1. The geologic surface formation is Triassic redbeds with a coverage of Quaternary sand dunes.

2. The estimated tops of important geologic markers are:

- (a) anhydrite - 400'
- (b) salt top - 600'
- (c) salt base - 1600'
- (d) Yates - 1750'
- (e) Seven Rivers - 2100'

RECEIVED

MAR 7 - 1978

U.S. GEOLOGICAL SURVEY
ARTESIA, NEW MEXICO

3. The estimated depths for oil and gas production will be from 2100' to TD.

4. The above casing program will be new casing.

5. See reverse side for control equipment schematics.

6. Will use approximately 500 bbls. total of 10.5% brine water from surface to TD.

7. A sub will be on the floor @ all times w/full opening valve.

8. A possibility of coring from 2100 to T.D. Decision to be made at a later date. Logging will be CNL-FDC and DLL-RXO. Will run temperature survey to determine cement top behind 5 1/2 casing.

9. No abnormal pressures or temperatures or H₂S gas expected.

10. Anticipate starting in latter half of 3rd quarter 1978 w/a duration of 5 days.

IN ORDER TO BE PROPOSED PROGRAM: If proposed to deepen or plug back, place in on present productive zone and proposed new productive zone. If proposed to drill or deepen directionally, place pertinent data on well and direction and proposed and true vertical depth. Give amount of well program, if any.

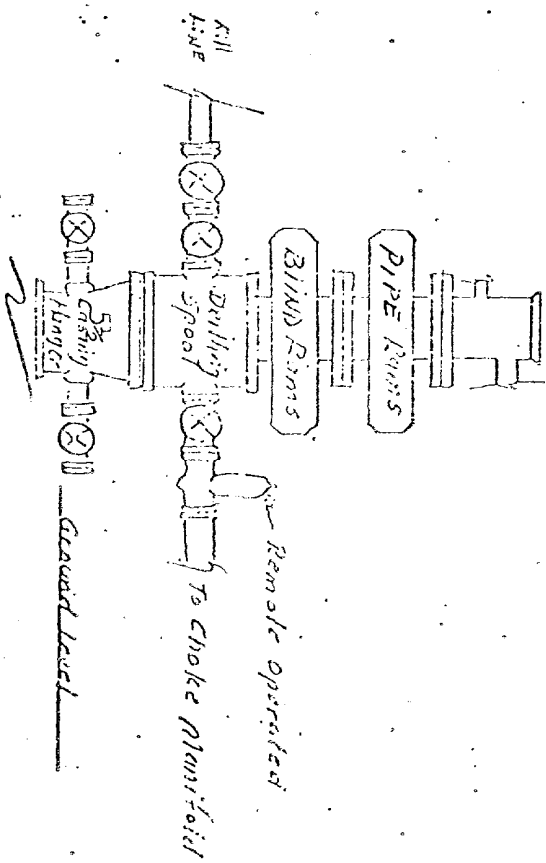
APPROVED BY [Signature] TITLE Area Superintendent DATE APR 10 1978

(This space for Federal or State (2 or use))

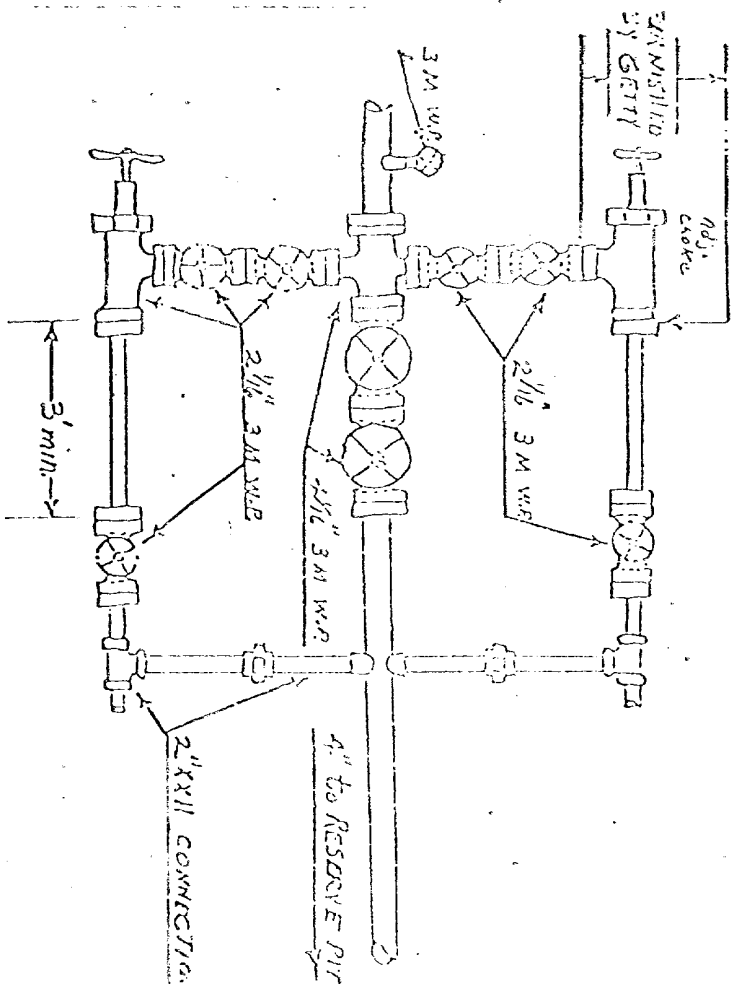
APPROVED BY

APPROVED BY [Signature] TITLE ACTING DISTRICT ENGINEER DATE APR 10 1978THIS APPROVAL IS RESCINDED IF OPERATIONS
ARE NOT COMMENCED WITHIN 3 MONTHS.EXPIRES APR 10 1978

Turnished by Giffy



All 3000 psi W.P.



MANIFOLD SHOWN IS MINIMUM THAT IS ACCEPTABLE.

N. MEXICO OIL CONSERVATION COMMISSION
WELL LOCATION AND ACREAGE DEDICATION PLAT

Form C-102
Supersedes C-128
Effective 1-1-65

All distances must be from the outer boundaries of the Section.

Operator GETTY OIL COMPANY			Lease Skelly Unit		Well No. 152
Unit Letter L	Section 15	Township 17 South	Range 31 East	County Eddy	
Actual Footage Location of Well: 1830 feet from the South line and 660 feet from the West line					
Ground Level Elev. 3863	Producing Formation 7-Rivers		Pool U. Fren 7 Rivers		Dedicated Acreage: 40 Acres

1. Outline the acreage dedicated to the subject well by colored pencil or hachure marks on the plat below.
2. If more than one lease is dedicated to the well, outline each and identify the ownership thereof (both as to working interest and royalty).
3. If more than one lease of different ownership is dedicated to the well, have the interests of all owners been consolidated by communitization, unitization, force-pooling, etc?

RECEIVED

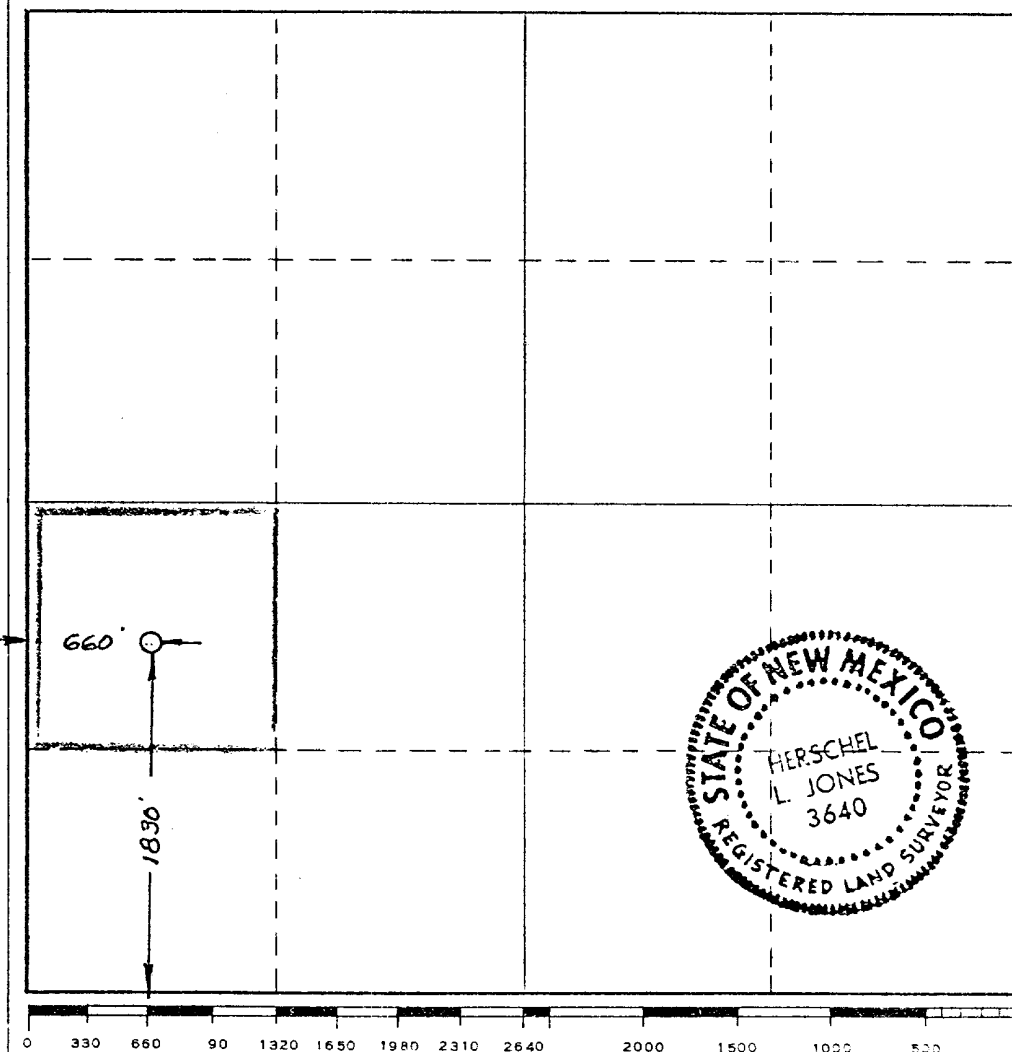
MAR 7 - 1978

☐ Yes ☐ No If answer is "yes," type of consolidation _____ **U.S. GEOLOGICAL SURVEY**

ARTESIA, NEW MEXICO

If answer is "no," list the owners and tract descriptions which have actually been consolidated. (Use reverse side of this form if necessary.) _____

No allowable will be assigned to the well until all interests have been consolidated (by communitization, unitization, forced-pooling, or otherwise) or until a non-standard unit, eliminating such interests, has been approved by the Commission.



CERTIFICATION

I hereby certify that the information contained herein is true and complete to the best of my knowledge and belief.

Name
Dale R. Crickett
Position
Area Superintendent
Company
Getty Oil Company
Date
March 6, 1978

I hereby certify that the well location shown on this plat was plotted from field notes of actual surveys made by me or under my supervision, and that the same is true and correct to the best of my knowledge and belief.

Date Surveyed
February 23, 1978

Registered Professional Engineer
and/or Land Surveyor

Herschel L. Jones
Certificate No. **3640**