

NMCCC COPY
UNITED STATES
DEPARTMENT OF THE INTERIOR
GEOLOGICAL SURVEY

SUBMIT IN TRIPPLICATE *Copy to SF* Form Approved
(Other Instructions on Reverse) Budget Bureau No. 62-11325

30-015-22521

APPLICATION FOR PERMIT TO DRILL, DEEPEN, OR PLUG BACK

1a. TYPE OF WORK
 DRILL ☒ DEEPEN ☐ PLUG BACK ☐

b. TYPE OF WELL
 OIL WELL ☒ GAS WELL ☐ OTHER ☐ SINGLE ZONE ☒ MULTIPLE ZONE ☐

2. NAME OF OPERATOR
 Getty Oil Company ✓

3. ADDRESS OF OPERATOR
 P. O. Box 730; Hobbs, New Mexico 88240

4. LOCATION OF WELL (Report location clearly and in accordance with any State requirements)
 At surface
 At proposed prod. zone ~~1830 FSL~~ 760 FSL 1830 FSL
 O. C. C.

14. DISTANCE IN MILES AND DIRECTION FROM NEAREST TOWN OR POST OFFICE
 5 miles Southwest of Maljamar, N.M.

15. DISTANCE FROM PROPOSED* LOCATION TO NEAREST PROPERTY OR LEASE LINE, FT.
 (Also to nearest drlg. unit line, if any) 1830'

16. NO. OF ACRES IN LEASE 4040
 18. DISTANCE FROM PROPOSED* LOCATION TO NEAREST WELL, DRILLING, COMPLETED, OR APPLIED FOR, ON THIS LEASE, FT. 180
 19. PROPOSED DEPTH 2790

21. ELEVATIONS (Show whether DF, RT, GR, etc.)
 3901 GR

PROPOSED CASING AND CEMENTING PROGRAM

SIZE OF HOLE	SIZE OF CASING	WEIGHT PER FOOT	SETTING DEPTH	QUANTITY OF CEMENT
12 1/8	8 5/8 K-55	24	700	290 SXS
7 7/8	5 1/2 K-55	14	2790	*

* - To be determined by caliper log

- The geologic surface formation is Triassic redbeds with a coverage of Quaternary sand dunes.
- The estimated tops of important geologic markers are:
 (a) anhydrite - 400'
 (b) salt top - 600'
 (c) salt base - 1600'
 (d) Yates - 1750'
 (e) Seven Rivers 2100'
- The estimated depths for oil and gas production will be from 2100' to TD.
- The above casing program will be new casing.
- See reverse side for control equipment schematics.
- Will use approximately 500 bbls. total of 10.5% brine water from surface to TD.
- A sub will be on the floor @ all times w/full opening valve.
- A possibility of coring from 2100 to T.D. Decision to be made at a later date. Logging will be CNL-FDC and DLL-RXO. Will run temperature survey to determine cement top behind 5 1/2 casing.
- No abnormal pressures or temperatures or H2S gas expected.
- Anticipate starting in latter half of quarter 197 w/a duration of 5 days.

RECEIVED

MAR 7 - 1978

U.S. GEOLOGICAL SURVEY
ARTESIA, NEW MEXICO

IN ADDITION TO THE PROPOSED PROGRAM, If proposed to deepen or plug back, give data on present productive zone and proposed new productive zone. If proposed to drill or deepen directionally, give pertinent data on well surface location and measured and true vertical depths. Give location of well on map, if any.

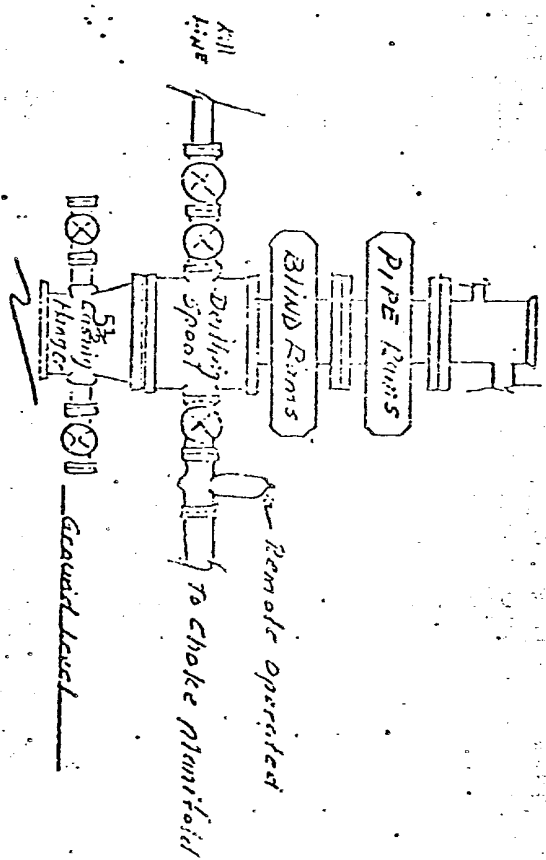
24. *[Signature]* TITLE Area Superintendent

APR 27 1978

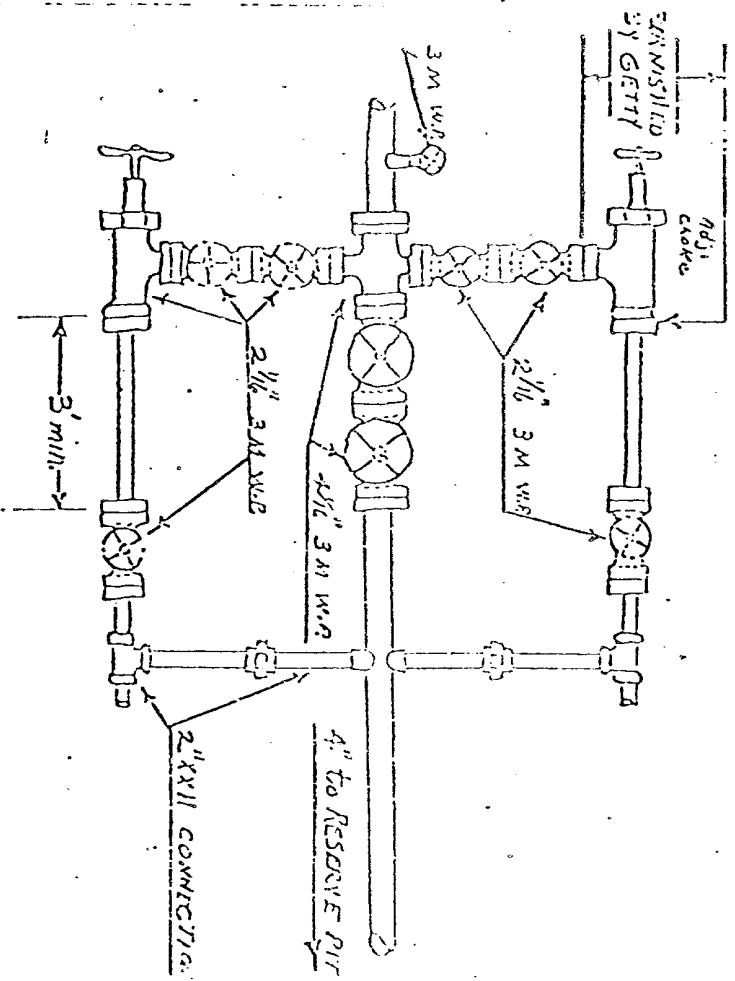
APPROVED BY *[Signature]* TITLE ACTING DISTRICT ENGINEER

APR 27 1978
 THIS APPROVAL IS RESCINDED IF OPERATIONS ARE NOT COMMENCED WITHIN 3 MONTHS.
 EXPIRES JUL 27 1978

Rotating Head, If Necessary,
Furnished By Getty



All 3000 psi W.P.



MANIFOLD SHOWN IS MINIMUM THAT IS ACCEPTABLE

NEW MEXICO OIL CONSERVATION COMMISSION
WELL LOCATION AND ACREAGE DEDICATION PLAT

Form C-102
Supersedes C-128
Effective 1-1-65

All distances must be from the outer boundaries of the Section.

Operator GETTY OIL COMPANY			Lease Skelly Unit		Well No. 147
Unit Letter 0	Section 14	Township 17 South	Range 31 East	County Eddy	
Actual Footage Location of Well: 760 feet from the South line and 1830 feet from the East line					
Ground Level Elev. 3901	Producing Formation 7-Rivers		Pool Fren		Dedicated Acreage: 40 Acres

1. Outline the acreage dedicated to the subject well by colored pencil or hachure marks on the plat below.
2. If more than one lease is dedicated to the well, outline each and identify the ownership thereof (both as to working interest and royalty).
3. If more than one lease of different ownership is dedicated to the well, have the interests of all owners been consolidated by communitization, unitization, force-pooling, etc?

☐ Yes ☐ No If answer is "yes," type of consolidation _____

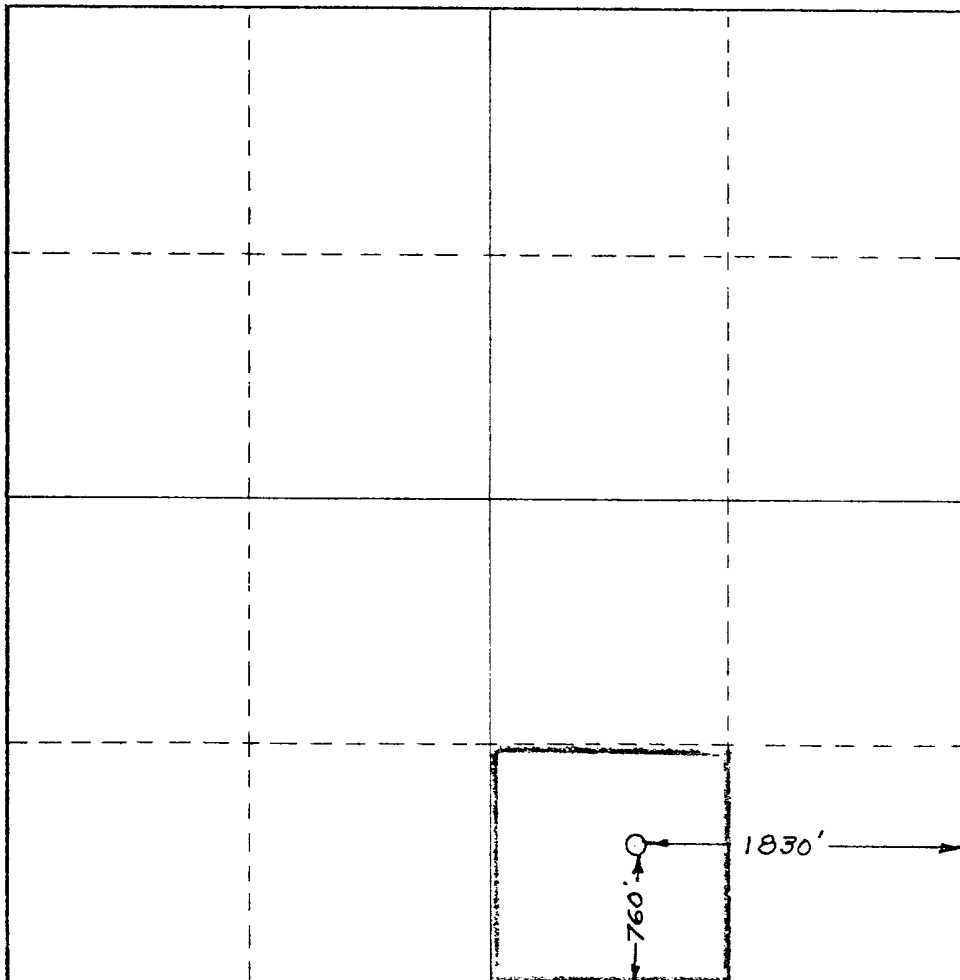
RECEIVED

MAR 7 - 1978

**U.S. GEOLOGICAL SURVEY
ARTESIA, NEW MEXICO**

If answer is "no," list the owners and tract descriptions which have actually been consolidated. (Use reverse side of this form if necessary.) _____

No allowable will be assigned to the well until all interests have been consolidated (by communitization, unitization, forced-pooling, or otherwise) or until a non-standard unit, eliminating such interests, has been approved by the Commission.



CERTIFICATION

I hereby certify that the information contained herein is true and complete to the best of my knowledge and belief.

Name
Dale R. Crockett

Position
Area Superintendent

Company
Getty Oil Company

Date
March 6, 1978

I hereby certify that the well location shown on this plat was plotted from field notes of actual surveys made by me or under my supervision, and that the same is true and correct to the best of my knowledge and belief.

Date Surveyed

February 22, 1978

Registered Professional Engineer and/or Land Surveyor

Certificate No.

