

UNITED STATES
DEPARTMENT OF THE INTERIOR
BUREAU OF LAND MANAGEMENT

SUBMIT IN TRIPL
(Other instructions
verse side)

FE
re

Form approved.
Budget Bureau No. 1004-0135
Expires August 31, 1985

451

SUNDRY NOTICES AND REPORTS ON WELLS

(Do not use this form for proposals to drill or to deepen or plug back to a different reservoir.
Use "APPLICATION FOR PERMIT—" for such proposals.)

1. OIL WELL <input checked="" type="checkbox"/> GAS WELL <input type="checkbox"/> OTHER <input type="checkbox"/>		5. LEASE DESIGNATION AND SERIAL NO. LC-029420-B	
2. NAME OF OPERATOR Texaco Producing Inc.		6. IF INDIAN, ALLOTTEE OR TRIBE NAME	
3. ADDRESS OF OPERATOR P.O. Box 730, Hobbs, NM 88240		7. UNIT AGREEMENT NAME Skelly Unit	
4. LOCATION OF WELL (Report location clearly and in accordance with any State requirements.* See also space 17 below.) At surface Letter G, 2080' FNL & 1880' FEL		8. FARM OR LEASE NAME Skelly Unit	
14. PERMIT NO.		9. WELL NO. 153	
15. ELEVATIONS (Show whether DF, RT, GR, etc.) 3880' GL		10. FIELD AND POOL, OR WILDCAT Fren Seven Rivers	
		11. SEC., T., R., M., OR BLK. AND SURVEY OR AREA Sec. 15, T-17-S, R-31-E	
		12. COUNTY OR PARISH Eddy	13. STATE NM

16.

Check Appropriate Box To Indicate Nature of Notice, Report, or Other Data

NOTICE OF INTENTION TO:

SUBSEQUENT REPORT OF:

TEST WATER SHUT-OFF

PULL OR ALTER CASING

WATER SHUT-OFF

REPAIRING WELL

FRACTURE TREAT

MULTIPLE COMPLETE

FRACTURE TREATMENT

ALTERING CASING

SHOOT OR ACIDIZE

ABANDON*

SHOOTING OR ACIDIZING

ABANDONMENT*

REPAIR WELL

CHANGE PLANS

(Other)

(Other)

(NOTE: Report results of multiple completion on Well Completion or Recompletion Report and Log form.)

17. DESCRIBE PROPOSED OR COMPLETED OPERATIONS (Clearly state all pertinent details, and give pertinent dates, including estimated date of starting any proposed work. If well is directionally drilled, give subsurface locations and measured and true vertical depths for all markers and zones pertinent to this work.)*

SEE ATTACHMENT

RECEIVED

JUL 27 '90

ARTESIA, OFFICE

RECEIVED
JUL 23 8 35 AM '90
CARTER COUNTY OFFICE
ARTESIA, NEW MEXICO

RECEIVED

18. I hereby certify that the foregoing is true and correct

SIGNED

J. A. Head / KSB

TITLE

Area Manager

DATE

07/20/90

(This space for Federal or State office use)

APPROVED BY

Signed by J. A. Head

TITLE

DATE

7-25-90

CONDITIONS OF APPROVAL, IF ANY:

*See Instructions on Reverse Side

SKELLY UNIT WELL NO. 153
Proposed Plugging Procedure

- 1) Backflow well..
- 2) Inform BLM 24 hrs. prior to commencement of work.
- 3) MIRU pulling unit. Pull rods and pump. Install BOP. Pull tubing.
- 4) By wireline. RIH with CIBP and set at 2300'. Cap with 35' of cement using a dump bailer.
- 5) RIH with tubing to PBTD. Load hole with salt gel mud consisting of 10 lb. brine with 25 lbs. of gel per barrel.
- 6) Pull up and spot a 25 sx plug of Class "C" cement (1.32 cuft/sx) from 1855'-1670' (base of salt 1670'). Tag plug.
- 7) Pull up and spot a 25 sx plug of Class "C" cement (1.32 cuft/sx) from 685'-500' (top of salt 682', surface casing shoe at 631'). Tag plug.
- 8) Pull up and pump 7 'sx of Class "C" cement (1.32 cuft/sx) from 50'-surface.
- 9) Cut off wellhead. Install marker. Clean location.

KELLY UNIT #153

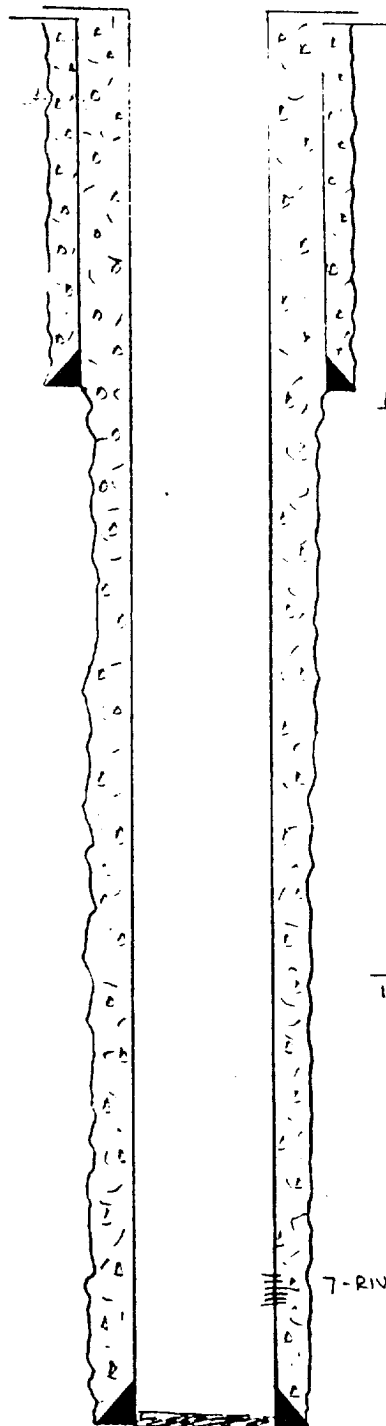
PRESENT

FREN 7-RIVERS

FCIS, T-17-G, R-31-E

TRG, 2080' ENL, 1885' FEL

KC = 3890'
GL = 3880'



682' TOP SALT

2 5/8" 23" SET AT 631'
IN 1" Hole w/ 275 SX
CMT. CIRC. (K-SS)

1670' BOTTOM SALT

7-RIVERS PERFS 2331'-2454' (21 Holes)

5 1/2" 14+15" SET AT 2629'
IN 7 7/8" Hole w/ 650 SX
CMT. CIRC. (K-SS)

114 UNIT # 153

PROPOSED

FREN T-RIVERS

CFAIS, T-17-S, R-31-E

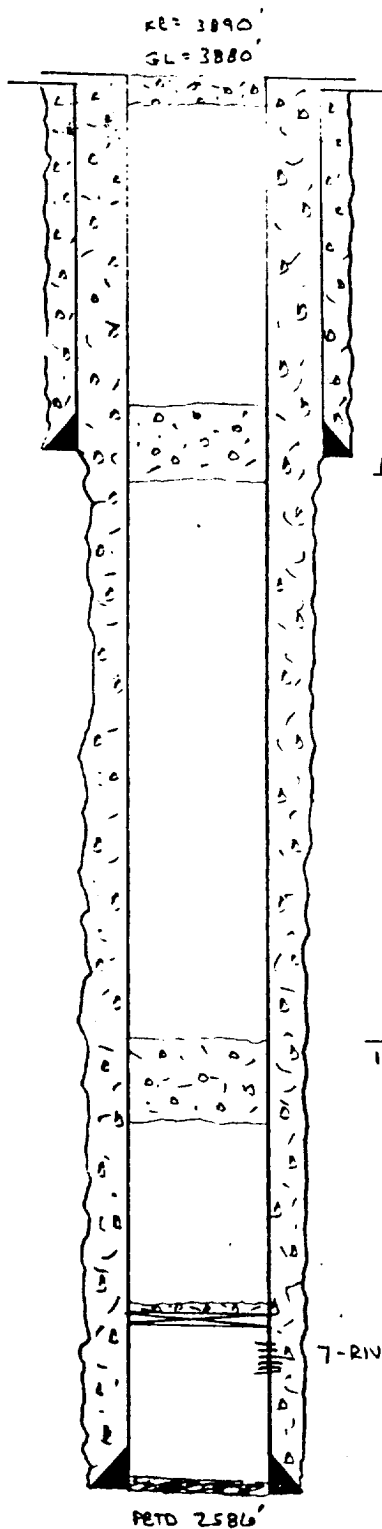
17R 2, 2080' EN, 1895' FEL

SX Plug 2'-50'

SX Plug 500'-685'

SX Plug 1670'-1855'

P @ 2300' W/ 35' CMT



2 5/8" 23" SET AT 631'
IN 11" Hole w/ 275 SX
CMT. CIRC. (K-55)

5 1/2" 14 1/2" SET AT 2629'
IN 7 1/8" Hole w/ 650 SX
CMT. CIRC. (K-55)

