

NEW MEXICO OIL CONSERVATION COMMISSION
WELL LOCATION AND ACREAGE DEDICATION FORM

Form O-1
Supersedes O-124
Effective 1-1-68

All distances must be from the outer boundaries of the Section

GENERAL AMERICAN OIL CO. OF TEXAS			Dexter "E"		3
"G"	20	17 South	30 East	Eddy	
Actual Well Location of Well:					
2310	feet from the North	line and	1650	feet from the East	line
3640	Producing Formation	Grayburg & San Andres	Grayburg Jackson	40	

1. Outline the acreage dedicated to the subject well by colored pencil or hatchure marks on the plat below.
2. If more than one lease is dedicated to the well, outline each and identify the ownership thereof (both as to working interest and royalty).
3. If more than one lease of different ownership is dedicated to the well, have the interests of all owners been consolidated by communitization, unitization, force-pooling, etc?

RECEIVED

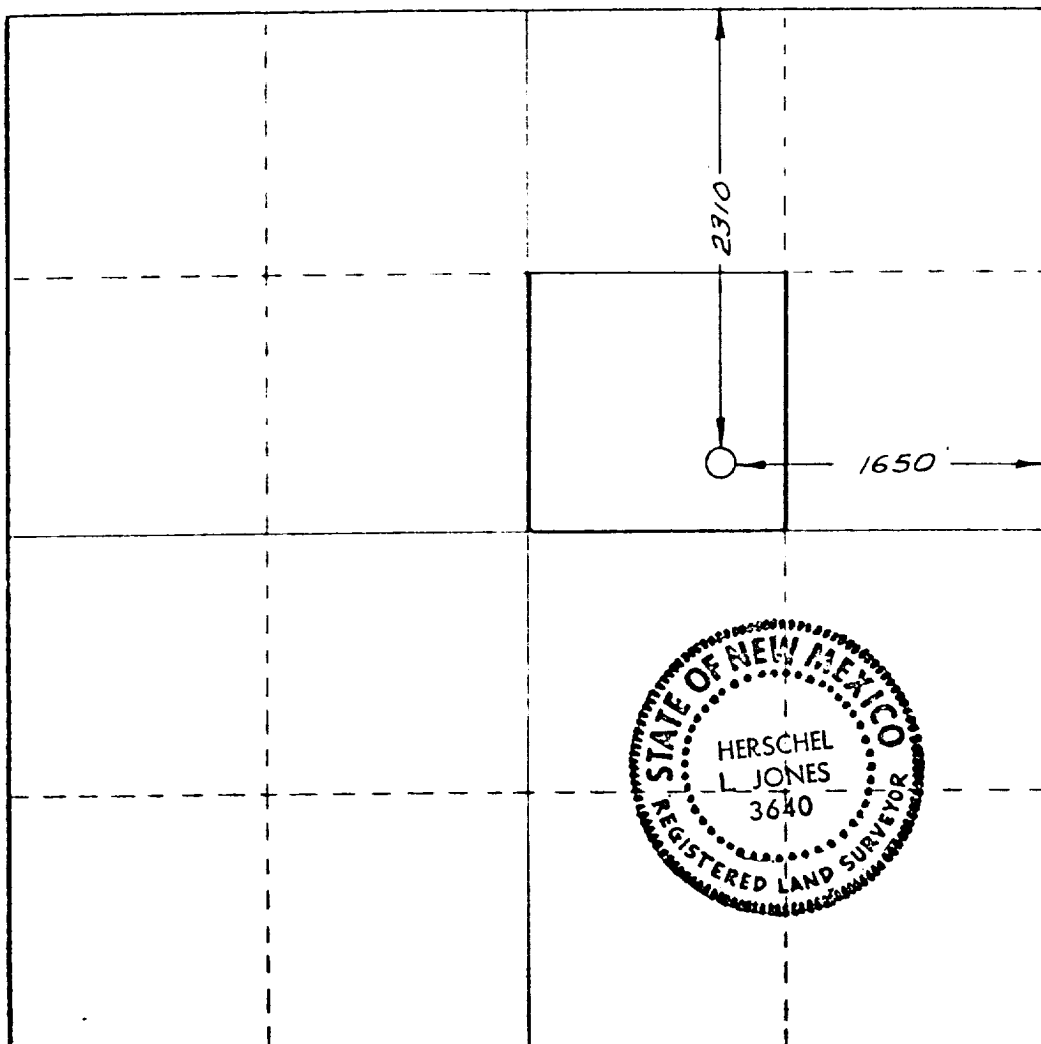
APR 25 1978

☐ Yes ☐ No If answer is "yes" type of consolidation _____

U.S. GEOLOGICAL SURVEY
ARTESIA, NEW MEXICO

If answer is "no," list the owners and tract descriptions which have actually been consolidated (Use reverse side of this form if necessary) _____

No allowable will be assigned to the well until all interests have been consolidated (by communitization, unitization, forced-pooling, or otherwise) or until a non-standard unit, eliminating such interests, has been approved by the Commission.



CERTIFICATION

I hereby certify that the information contained herein is true and complete to the best of my knowledge and belief.

Lendell Hawkins

Lendell Hawkins

Asst. Field Superintendent
General American
Oil Co. of Texas

April 19, 1978

I hereby certify that the well location shown on this plat was plotted from field notes of actual surveys made by me or under my supervision, and that the same is true and correct to the best of my knowledge and belief.

Date Surveyed

April 19, 1978

Registered Professional Engineer
and/or Land Surveyor

Certificate No.

3640

