

**N MEXICO OIL CONSERVATION COMMISSION
WELL LOCATION AND ACREAGE DEDICATION PLAT**

Supervised by
Effective

All distances must be from the outer boundaries of the Section

Operator GENERAL AMERICAN OIL CO. OF TEXAS				Lease GREEN "B"		Section 9	
Section G	Section 19	Range 17 SOUTH	Range 29 EAST	County EDDY			
Actual Well Location and Well: 2310 feet from the EAST line and 1980 feet from the NORTH line. Ground Level Elev. 3698.2 Producing Formation Morrow Pool South Empire Morrow							
Date of Dedication 320 294.69							

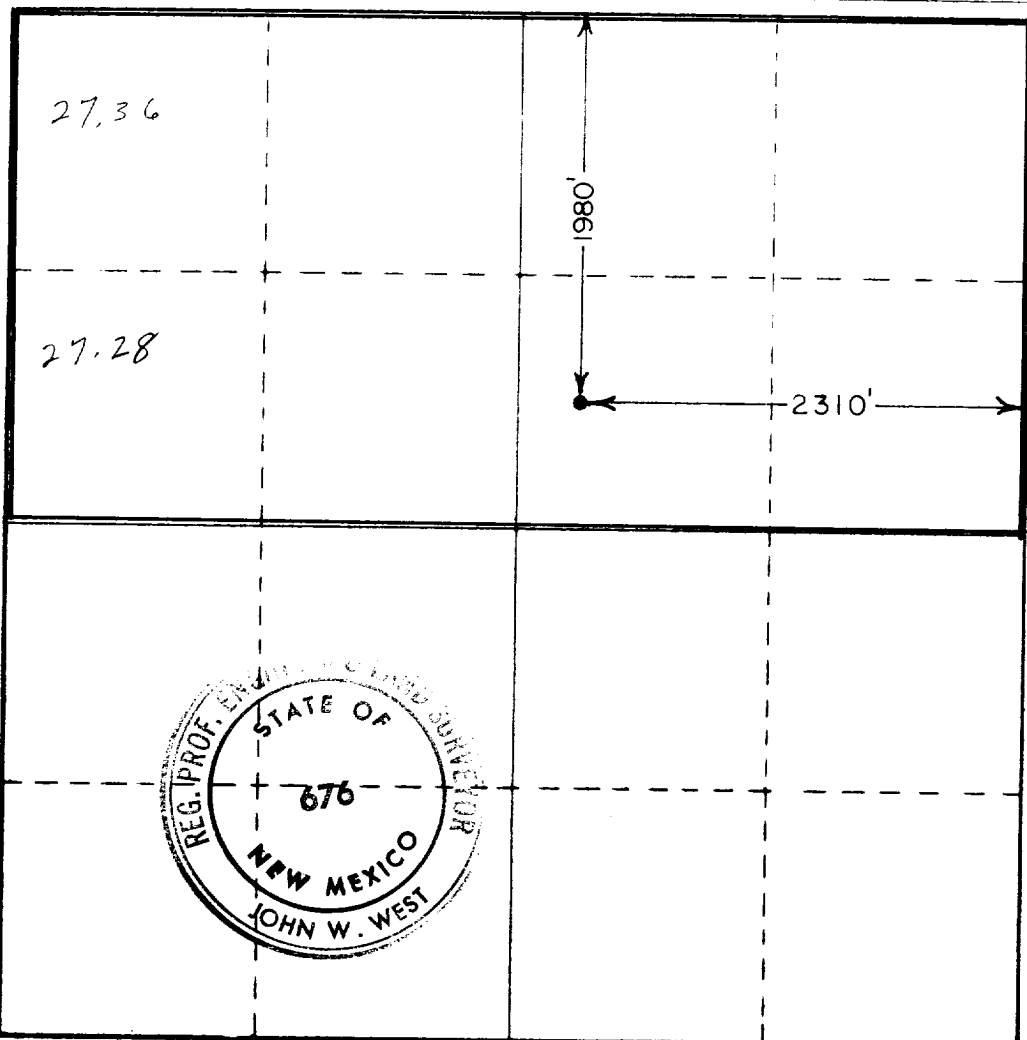
- Outline the acreage dedicated to the subject well by colored pencil or hatchure marks on the plat below.
- If more than one lease is dedicated to the well, outline each and identify the ownership thereof (both as to working interest and royalty).
- If more than one lease of different ownership is dedicated to the well, have the interests of all owners been consolidated by communitization, unitization, force-pooling, etc?

☐ Yes ☐ No If answer is "yes," type of consolidation _____

If answer is "no," list the owners and tract descriptions which have actually been consolidated (Use reverse side of this form if necessary.) _____

No allowable will be assigned to the well until all interests have been consolidated (by communitization, unitization, forced-pooling, or otherwise) or until a non-standard unit, eliminating such interests, has been approved by the Commission. **NSP 1143**

RECEIVED
MAY 4 1979
U.S. GEOLOGICAL SURVEY
ARTESIA, NEW MEXICO



CERTIFICATION

I hereby certify that the information contained herein is true and complete to the best of my knowledge and belief.

Londell M. Hawkins
Name

Londell M. Hawkins

Position

Assistant Field Superintendent

Company

General American Oil Co. of Texas

Date

May 2, 1979

I hereby certify that the well location shown on this plat was plotted from field notes of actual surveys made by me or under my supervision, and that the same is true and correct to the best of my knowledge and belief.

Date Surveyed

APRIL 12, 1979

Registered Professional Engineer and/or Land Surveyor

John W. West

Certificate No. **John W. West**

676

Ronald J. Eideen

3239

