

30-015-23043

Form C-101
Revised 1-1-65

NEW MEXICO OIL CONSERVATION COMMISSION

RECEIVED

OCT 22 1979

O. C. C.

ARTESIA OFFICE

NO. OF COPIES RECEIVED	6
DISTRIBUTION	
SANTA FE	1
FILE	1 ✓
U.S.G.S.	2
LAND OFFICE	1
OPERATOR	1

5A. Indicate Type of Lease

STATE ☒ FEE ☐

5. State Oil & Gas Lease No.

B-4918

7. Unit Agreement Name

8. Farm or Lease Name

Old Loco Unit

9. Well No.

18

10. Field and Pool, or Wildcat SA

Grbg. Jackson Queen Grbg.

12. County

Eddy

APPLICATION FOR PERMIT TO DRILL, DEEPEN, OR PLUG BACK

1a. Type of Work

DRILL ☒

DEEPEN ☐

PLUG BACK ☐

b. Type of Well

OIL WELL ☒

GAS WELL ☐

OTHER

SINGLE ZONE ☐

MULTIPLE ZONE ☐

2. Name of Operator

Marbob Energy Corporation ✓

3. Address of Operator

P.O. Box 304, Artesia, N.M. 88210

4. Location of Well

UNIT LETTER N LOCATED 990 FEET FROM THE South LINE

AND 2310 FEET FROM THE West LINE OF SEC. 32 TWP. 17S RGE. 29E NMPM

19. Proposed Depth

2850'

19A. Formation

Grayburg & Lovington

20. Rotary or C.T.

Rotary

21. Elevations (Show whether DF, RT, etc.)

3590 GL

21A. Kind & Status Plug. Bond

Statewide Active

21B. Drilling Contractor

Alta-West Drilling Co.

22. Approx. Date Work will start

10/27/79

23.

PROPOSED CASING AND CEMENT PROGRAM

SIZE OF HOLE	SIZE OF CASING	WEIGHT PER FOOT	SETTING DEPTH	SACKS OF CEMENT	EST. TOP
11"	8 5/8"	28#	250'	Circ.	
7 7/8"	4 1/2"	10.50#	2850'	225	

We propose to drill to approximately 2850' to test Grayburg and Lovington formations. We do not anticipate gas at these depths & will not set up a blowout preventer program at this time.

EXPIRES 1-23-80

IN ABOVE SPACE DESCRIBE PROPOSED PROGRAM: IF PROPOSAL IS TO DEEPEN OR PLUG BACK, GIVE DATA ON PRESENT PRODUCTIVE ZONE AND PROPOSED NEW PRODUCTIVE ZONE. GIVE BLOWOUT PREVENTER PROGRAM, IF ANY.

I hereby certify that the information above is true and complete to the best of my knowledge and belief.

Signed Carolyn Davis Title Secretary Date 10/22/79

(This space for State Use)

APPROVED BY W. A. Gressett TITLE SUPERVISOR, DISTRICT II DATE OCT 23 1979

CONDITIONS OF APPROVAL, IF ANY:

N MEXICO OIL CONSERVATION COMMISS
WELL LOCATION AND ACREAGE DEDICATION PLAT

Form O-150
Supersedes O-128
Effective 1-1-61

All distances must be from the outer boundaries of the Section

Operator MARBOB ENERGY CORPORATION		Lease OLD LOCO UNIT		Well No. 18
Unit Letter N	Section 32	Township 17 South	Range 29 East	County EDDY
Actual Footage Location of Well: 990 feet from the South line and 2310 feet from the West line				
Ground Level Elev. 3590	Producing Formation Grayburg & Lovington	Block Grbg. Jackson Queen Gbrg. SA	Estimated Acreage 40	

1. Outline the acreage dedicated to the subject well by colored pencil or hatchure marks on the plat below.
 2. If more than one lease is dedicated to the well, outline each and identify the ownership thereof (both as to working interest and royalty).
 3. If more than one lease of different ownership is dedicated to the well, have the interests of all owners been consolidated by communitization, unitization, force-pooling, etc?
- ☐ Yes ☐ No If answer is "yes," type of consolidation _____

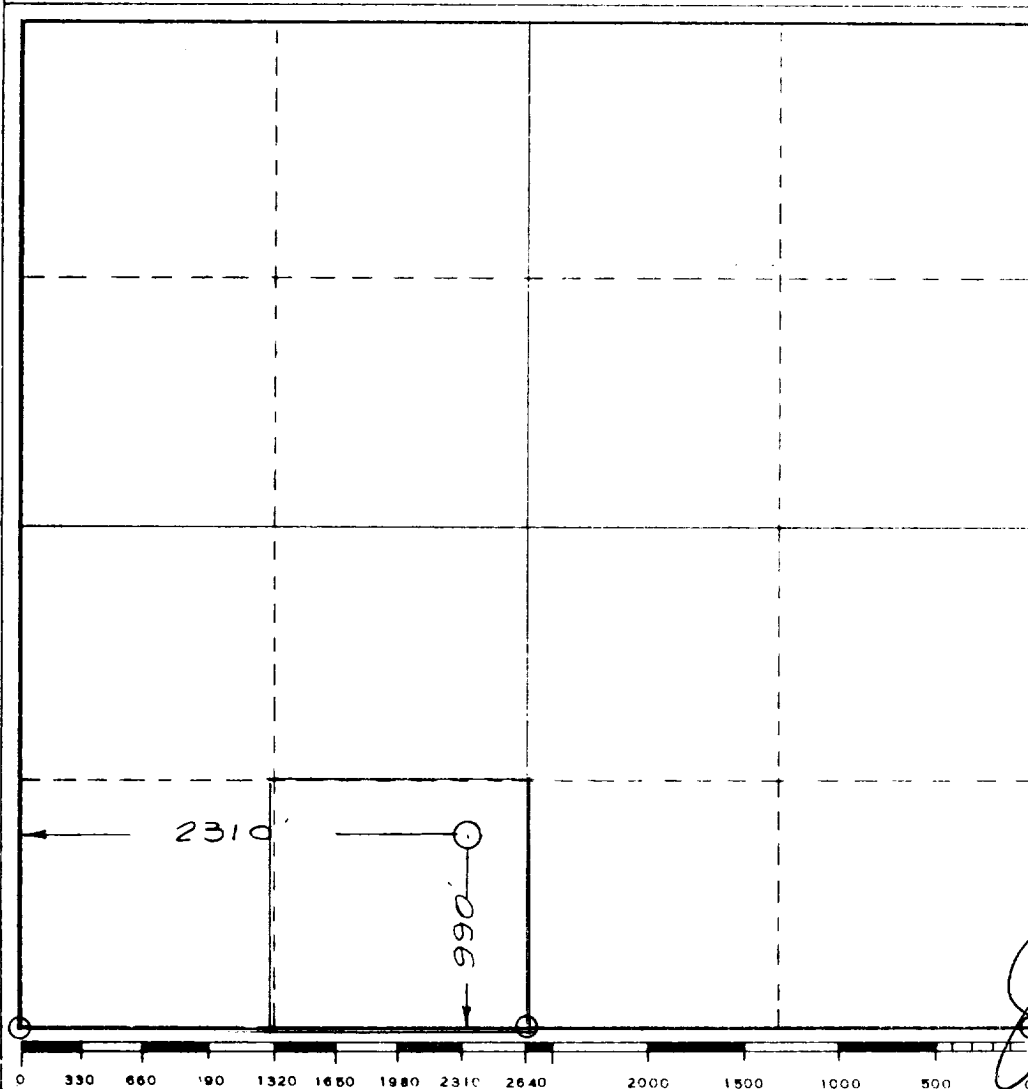
RECEIVED

OCT 22 1979

**D. C. C.
ARTESIA, OFFICE**

If answer is "no," list the owners and tract descriptions which have actually been consolidated. (Use reverse side of this form if necessary.) _____

No allowable will be assigned to the well until all interests have been consolidated (by communitization, unitization, forced-pooling, or otherwise) or until a non-standard unit, eliminating such interests, has been approved by the Commission.



CERTIFICATION

I hereby certify that the information contained herein is true and complete to the best of my knowledge and belief.

Carolyn Davis

Secretary

Marbob Energy Corp.

10/22/79

I hereby certify that the well location shown on this plat was plotted from field notes of actual surveys made by me or under my supervision, and that the same is true and correct to the best of my knowledge and belief.

October 9, 1979

Registered Professional Engineer
and/or Land Surveyor

John W. Shearn

Certificate No.

1559