

N. MEXICO OIL CONSERVATION COMMISS
WELL LOCATION AND ACREAGE DEDICATION PLAT

Form C-102
 Supersedes C-128
 Effective 1-1-65

All distances must be from the outer boundaries of the Section.

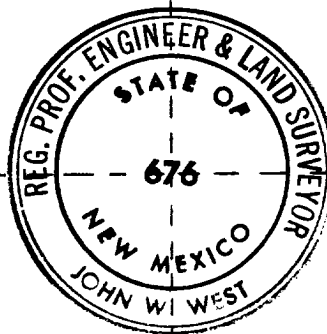
Operator Kennedy Oil Co., Inc.			Lease New Mexico BG State		Well No. 5
Unit Letter 1	Section 2	Township 17 South	Range 31 East	County Eddy	
Actual Footage Location of Well: 2310 feet from the South line and 990 feet from the East line					
Ground Level Elev. 3998.1	Producing Formation <i>Trabuco San Andres</i>		Pool <i>Trabuco Jackson O.G. SA</i>		Dedicated Acreage: <i>1.0</i> Acres

1. Outline the acreage dedicated to the subject well by colored pencil or hachure marks on the plat below.
2. If more than one lease is dedicated to the well, outline each and identify the ownership thereof (both as to working interest and royalty).
3. If more than one lease of different ownership is dedicated to the well, have the interests of all owners been consolidated by communitization, unitization, force-pooling, etc?

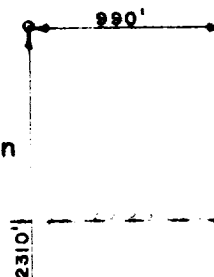
☐ Yes ☐ No If answer is "yes," type of consolidation _____

If answer is "no," list the owners and tract descriptions which have actually been consolidated. (Use reverse side of this form if necessary.) _____

No allowable will be assigned to the well until all interests have been consolidated (by communitization, unitization, forced-pooling, or otherwise) or until a non-standard unit, eliminating such interests, has been approved by the Commission.



NOTE: Location Elevation Was Calculated Using New Mexico State BG # 1 as T.B.M.
 (New Mexico State BG #1 Elevation was obtain from the New Mexico Oil Commission)



CERTIFICATION

I hereby certify that the information contained herein is true and complete to the best of my knowledge and belief.

Name _____

Position _____

KENNEDY OIL COMPANY
 P. O. BOX 151
 ARTESIA, NEW MEXICO 88210

Date _____

I hereby certify that the well location shown on this plat was plotted from field notes of actual surveys made by me or under my supervision, and that the same is true and correct to the best of my knowledge and belief.

Date Surveyed _____

5-31-1980

Registered Professional Engineer and/or Land Surveyor

John W. West

Certificate No. **JOHN W. WEST 676**
PATRICK A. ROMERO 6868
Ronald J. Eldon 3239

