

N. O. C. D. COPY
UNITED STATES
DEPARTMENT OF THE INTERIOR
GEOLOGICAL SURVEYSUBMIT IN "PLICATE"
(Other Insl. Jons on
reverse side)Form approved.
Budget Bureau No. 42 R1425

30-015-23914

APPLICATION FOR PERMIT TO DRILL, DEEPEN, OR PLUG BACK

1a. TYPE OF WORK

DRILL ☒DEEPEN ☐PLUG BACK ☐

b. TYPE OF WELL

OIL
WELL ☒GAS
WELL ☐

OTHER

SINGLE
ZONE ☐MULTIPLE
ZONE ☐

2. NAME OF OPERATOR

General American Oil Company of Texas

3. ADDRESS OF OPERATOR

P. O. Box 128 Loco Hills, New Mexico 88255

RECEIVED

4. LOCATION OF WELL (Report location clearly and in accordance with any State requirements.)*

At surface

330' FSL and 660' FEL

SEP 11 1981

At proposed prod. zone

990'

O. C. D.

14. DISTANCE IN MILES AND DIRECTION FROM NEAREST TOWN OR POST OFFICE*

2.5 Miles

ARTESIA, OFFICE

15. DISTANCE FROM PROPOSED*

LOCATION TO NEAREST
PROPERTY OR LEASE LINE, FT.
(Also to nearest drlg. unit line, if any)

660'

16. NO. OF ACRES IN LEASE

1440

17. NO. OF ACRES ASSIGNED
TO THIS WELL

40

18. DISTANCE FROM PROPOSED LOCATION*

TO NEAREST WELL, DRILLING, COMPLETED,
OR APPLIED FOR, ON THIS LEASE, FT.

990'

19. PROPOSED DEPTH

3600' ±

20. ROTARY OR CABLE TOOLS

Rotary

21. ELEVATIONS (Show whether DF, RT, GR, etc.)

22. APPROX. DATE WORK WILL START*

August, 1981

23.

PROPOSED CASING AND CEMENTING PROGRAM

SIZE OF HOLE	SIZE OF CASING	WEIGHT PER FOOT	SETTING DEPTH	QUANTITY OF CEMENT
12-1/4"	8-5/8"	20#	400'-500'	Circulate to surface
7-7/8"	5-1/2"	15.5#	3600' ±	230 ± sacks

We proposed to drill this well to 3600' ± and complete in the Grayburg and San Andres.

Mud program: Water and native mud will be used to 200' from T.D. Salt gel will be used the remainder of the hole.

All zones indicating porosity will be acidized or sand fraced.

A 10# 3000# blowout preventor will be used during drilling operations.

RECEIVED
JUL 10 1981OIL & GAS
U.S. GEOLOGICAL SURVEY

IN ABOVE SPACE DESCRIBE PROPOSED PROGRAM: If proposal is to deepen or plug back, give data on present productive zone and proposed new productive zone. If proposal is to drill or deepen directionally, give pertinent data on subsurface locations and measured and true vertical depths. Give blowout preventer program, if any.

24.

SIGNED

m. S. Samsing

TITLE

Engineer

DATE

7-9-81

(This space for Federal or State office use)

PERMIT NO.

46-864, GEORGE H. STEWART

APPROVAL DATE

APPROVED BY

SEP 9 1981

TITLE

DATE

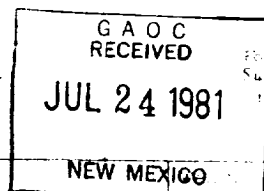
CONDITIONS OF APPROVAL, IF ANY:

OR

JAMES A. CHURMAN
INCH SUPERVISOR

*See Instructions On Reverse Side

NEW MEXICO OIL CONSERVATION COMMISSION
WELL LOCATION AND ACREAGE DEDICATION PLAT



All distances must be from the outer boundaries of the Section

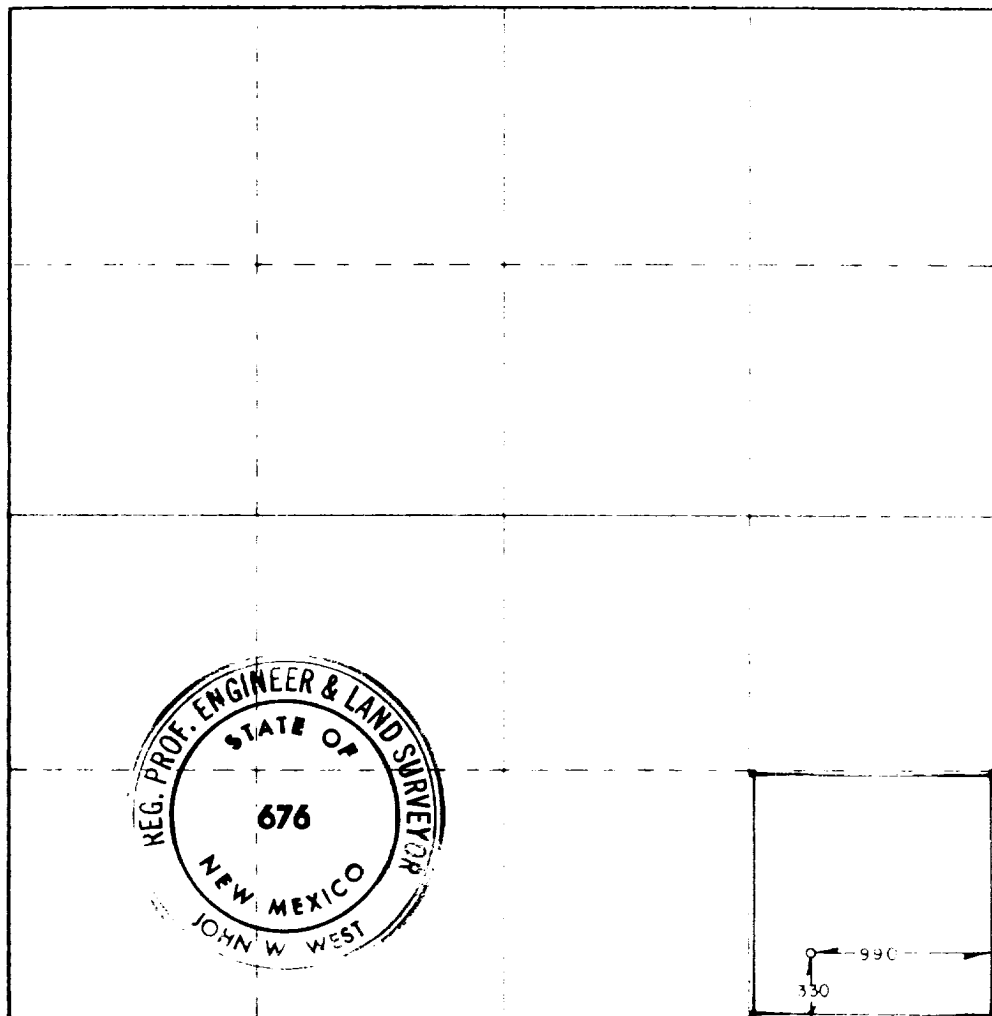
Operator GENERAL AMERICAN OIL CO. OF TEXAS		Lease KEELY C		55
Section P	Section 12	Township 17 South	Range 29 East	County Eddy
Actual acreage location of well:				
330	feet from the South	and 990	feet from the East	
3657.6	Grayburg-Jackson	Grayburg-San Andres	40	

1. Outline the acreage dedicated to the subject well by colored pencil or hatchure marks on the plat below.
2. If more than one lease is dedicated to the well, outline each and identify the ownership thereof (both as to working interest and royalty).
3. If more than one lease of different ownership is dedicated to the well, have the interests of all wells been consolidated by communitization, unitization, force-pooling, etc?

☒ Yes ☐ No If answer is "yes" type of consolidation _____

If answer is "no" list the owners and tract descriptions which have actually been consolidated (use separate sheet if necessary): _____

No allowable will be assigned to the well until all interests have been consolidated (by communitization, unitization, force-pooling, or otherwise) or until a non-standard unit, eliminating such interests, has been approved by the Commission.



I hereby certify that the information contained herein is true and complete to the best of my knowledge and belief.

Lendell N. Hawkins

Lendell N. Hawkins

Field Superintendent

General American Oil Co. of Texas

August 6, 1981

I hereby certify that the well location shown on this plat was obtained from field notes of actual surveys made by me or under my supervision, and that the same is true and correct to the best of my knowledge and belief.

7/21/81

Registered Professional Engineer

and

John W. West

Certificate No. JOHN W. WEST 676
PATRICK A. ROMERO 6663
RONALD J. EDGSON 3239

330 660 990 1320 1650 1980 2310 2640 2970 3300 3630 3960 4290 4620 4950 5280 5610 5940 6270 6600 6930 7260 7590 7920 8250 8580 8910 9240 9570 9900

DRILLING PROGNOSIS

KEELY "C" #55
GRAYBURG-JACKSON
EDDY COUNTY, NEW MEXICO

- I. OBJECTIVE: Drill and complete a development well in the Grayburg-Jackson Field, Eddy County, New Mexico.
- II. LOCATION: 330' FSL & ⁹⁹⁶~~660~~' FEL Section 12, T-17S, R-29E
- III. BUDGET CLASSIFICATION: Development.
- IV. PROJECTED TOTAL DEPTH, HOLE SIZE, SLOPE TEST, DRILL PIPE MEASUREMENTS:
 - A. 12-1/4" hole to Top of Salt (approximately 400'-500') to accommodate 8-5/8" surface casing.
 - B. 7-7/8" hole to 3600' \pm to accommodate 5-1/2" production casing.
 - C. Estimated drilling time 6-7 days.
 - D. Slope test will be run at each bit trip, 500' interval, or as directed by company representative.
 - E. Drill pipe will be strapped out of hole before any coring, testing, or logging.
- V. DRILLING CONTRACT:
 - A. Contractor: W.E.K. Drilling Company, Inc.
 - B. Type of Contract: Footage.
 - C. Contract Depth: 3600'.

VI. MUD PROGRAM:

<u>Interval</u>	<u>Type Mud</u>	<u>Weight</u>	<u>Viscosity</u>	<u>WL</u>
0' — 200' from TD	Fresh & Salt Water	9-10	28 - 30	NC
200' from TD — TD	Salt GEL	10-11	36 - 40	NC

VII. ESTIMATED GEOLOGICAL TOPS FOR KEELY "C" #55

<u>Top</u>	<u>Vertical Depth</u>	<u>Subsea Depth</u>
A. Queen	1980'	+ 1684'
B. San Andres	2682'	+ 982'
C. Lovington	2780'	+ 884'

VIII. SAMPLES

- A. Samples will be taken at 10' intervals from 2200' to T.D. or as directed by Company representative.

IX. CORES AND DRILL STEM TESTS:

- A. No cores or DSTS are planned.

DRILLING PROGNOSIS

-2-

KEELY "C" #55
GRAYBURG-JACKSON
EDDY COUNTY, NEW MEXICO

X. LOGS:

- A. Logging program will consist of Sidewall Neutron—Gamma Ray—Caliper Log from 0' — T.D.

XI. CASING PROGRAM

- A. Surface: 8-5/8" 20# K-55 ST&C casing will be run to just above Top of Salt and cemented with Class "C" cement with 2% calcium chloride. If cement does not circulate, the casing will be cemented to surface with ready-mix or 1" pipe down the backside. Appropriate float equipment will be run and a dry sample of the cement caught.
- B. Production: 5-1/2" 15.5# K-55 ST&C casing will be run to T.D. Sufficient volume of Class "H" cement with 10# sand, 5# salt, 1/4# Flocl, and 3/4 of 1% CFR-2 per bag will be pumped to cover all zones of interest. Appropriate float equipment will be run and a dry sample of the cement caught.

XII. SAFETY PROGRAM:

The safety program will conform to all U.S.G.S. rules and regulations. The B.O.P.E. will be checked at least once a week or as directed by company representative.

XIII. THIRD PARTY SERVICES:

- | | |
|----------------------|---------------------------|
| A. Surveying: | John West Engineering |
| B. Dirt Work: | Jabo Rowland Construction |
| C. Water & Trucking: | I & W Trucking |
| D. Mud: | Marr's Mud Company |
| E. Cementing: | Dowell |
| F. Logging: | Dresser Atlas |
| G. Stimulation: | Dresser-Titan |

SUBMITTED BY: m. s. sanang

DATE: 7-9-81

MSS/mjc

APPROVED BY: _____

DATE: _____