

NO. OF COPIES RECEIVED	
DISTRIBUTION	
SANTA FE	1
FILE	1
U.S.G.S.	2
LAND OFFICE	1
OPERATOR	1

NEW MEXICO OIL CONSERVATION COMMISSION
RECEIVED

APR 16 1982

O. C. D.

Form C-101
Revised 1-1-65

5A. Indicate Type of Lease
STATE ☒ FEE ☐

5. State Oil & Gas Lease No.
E-742

APPLICATION FOR PERMIT TO DRILL, DEEPEN, OR PLUG BACK

1a. Type of Work DRILL <input checked="" type="checkbox"/> DEEPEN <input type="checkbox"/> PLUG BACK <input type="checkbox"/>		7. Unit Agreement Name
b. Type of Well OIL WELL <input checked="" type="checkbox"/> GAS WELL <input type="checkbox"/> OTHER <input type="checkbox"/>		8. Farm or Lease Name State S-19
2. Name of Operator CONOCO INC.		9. Well No. 3
3. Address of Operator P. O. Box 460, Hobbs, N.M. 88240		10. Field and Pool, or Wildcat Undesignated Abo
4. Location of Well UNIT LETTER J LOCATED 1980 FEET FROM THE South LINE AND 1980 FEET FROM THE East LINE OF SEC. 19 TWP. 17S RGE. 29E NMPM		12. County Eddy
19. Proposed Depth 7300'		19A. Formation Abo
20. Rotary or C.T. Rotary		21. Elevations (Show whether DI, RT, etc.) 3670' GL(EST)
21A. Kind & Status Plug. Bond Blanket		21B. Drilling Contractor
22. Approx. Date Work will start May 15, 1982		

PROPOSED CASING AND CEMENT PROGRAM

SIZE OF HOLE	SIZE OF CASING	WEIGHT PER FOOT	SETTING DEPTH	SACKS OF CEMENT	EST. TOP
17 1/2"	13 3/8"	48#	675'	638sx	Circulate
12 1/2"	9 5/8"	36#	2600'	1062sx	Circulate
7 7/8"	5 1/2"	17#	7300'	1989sx	Circulate

It is proposed to drill a straight hole to a TD of 7300' and complete it as an Abo oil well.

See attachments for location plat and BOP specs.

Posted ID-1
API + NL Book
4-23-82

APPROVAL VALID FOR 180 DAYS
PERMIT EXPIRES 10-20-82
UNLESS DRILLING UNDERWAY

IN ABOVE SPACE DESCRIBE PROPOSED PROGRAM: IF PROPOSAL IS TO DEEPEN OR PLUG BACK, GIVE DATA ON PRESENT PRODUCTIVE ZONE AND PROPOSED NEW PRODUCTIVE ZONE. GIVE BLOWOUT PREVENTER PROGRAM, IF ANY.

I hereby certify that the information above is true and complete to the best of my knowledge and belief.

Signed Wm A. Butler Title Administrative Supervisor Date April 15, 1982

(This space for State Use)

APPROVED BY Th. Williams TITLE OIL AND GAS INSPECTOR DATE APR 20 1982

CONDITIONS OF APPROVAL, IF ANY:

OCDB
R6F42
File 1

MEXICO OIL CONSERVATION COMMISSION
WELL LOCATION AND ACREAGE DEDICATION PLAT

Form C-102
Supersedes C-128
Effective 1-1-85

All distances must be from the outer boundaries of the Section

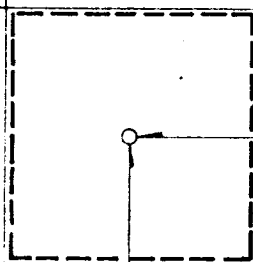
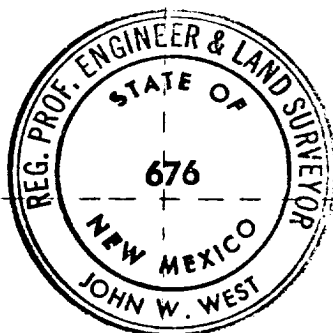
Operator Conoco, Inc.		Lease State S-19		Well No. 3
Tract Letter J	Section 19	Township 17 South	Range 29 East	County Eddy
Actual Plot Line Location of Well: 1980 feet from the south line and 1980 feet from the east line				
Ground Level Elev. 3669.8'	Producing Formation Abo	Pool Empire Undesignated Abo	Dedicated Acreage 40 Acres	

1. Outline the acreage dedicated to the subject well by colored pencil or hachure marks on the plat below.
2. If more than one lease is dedicated to the well, outline each and identify the ownership thereof (both as to working interest and royalty).
3. If more than one lease of different ownership is dedicated to the well, have the interests of all owners been consolidated by communitization, unitization, force-pooling, etc?

☐ Yes ☐ No If answer is "yes," type of consolidation _____

If answer is "no," list the owners and tract descriptions which have actually been consolidated. (Use reverse side of this form if necessary.) _____

No allowable will be assigned to the well until all interests have been consolidated (by communitization, unitization, forced-pooling, or otherwise) or until a non-standard unit, eliminating such interests, has been approved by the Commission.



CERTIFICATION

I hereby certify that the information contained herein is true and complete to the best of my knowledge and belief.

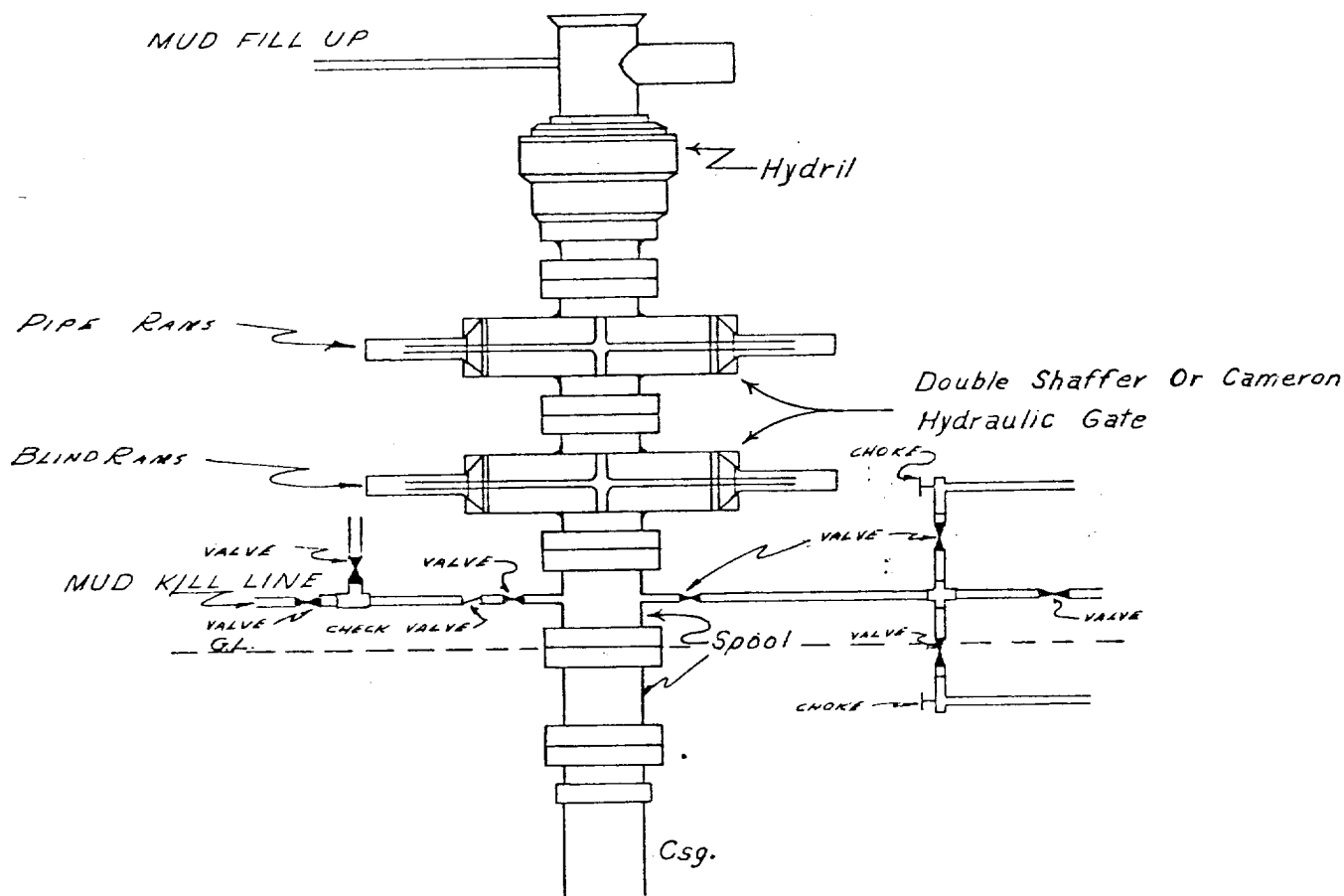
Name
Wm A. Bartlett
Position
Administrative Supervisor
Company
Conoco Inc.
Date
April 15, 1982

I hereby certify that the well location shown on this plat was plotted from field notes of actual surveys made by me or under my supervision, and that the same is true and correct to the best of my knowledge and belief.

Date Surveyed
2-27-82
Registered Professional Engineer and/or Land Surveyor

John W. West

CONTINENTAL OIL COMPANY
Blow-out Preventer Specifications



API Series 900

NOTE:

Manual and Hydraulic controls with closing unit no less than 75' from well head.
Remote controls on rig floor.

**DUE TO SUBSTRUCTURE CLEARANCE,
HYDRIL MAY OR MAY NOT BE USED.**