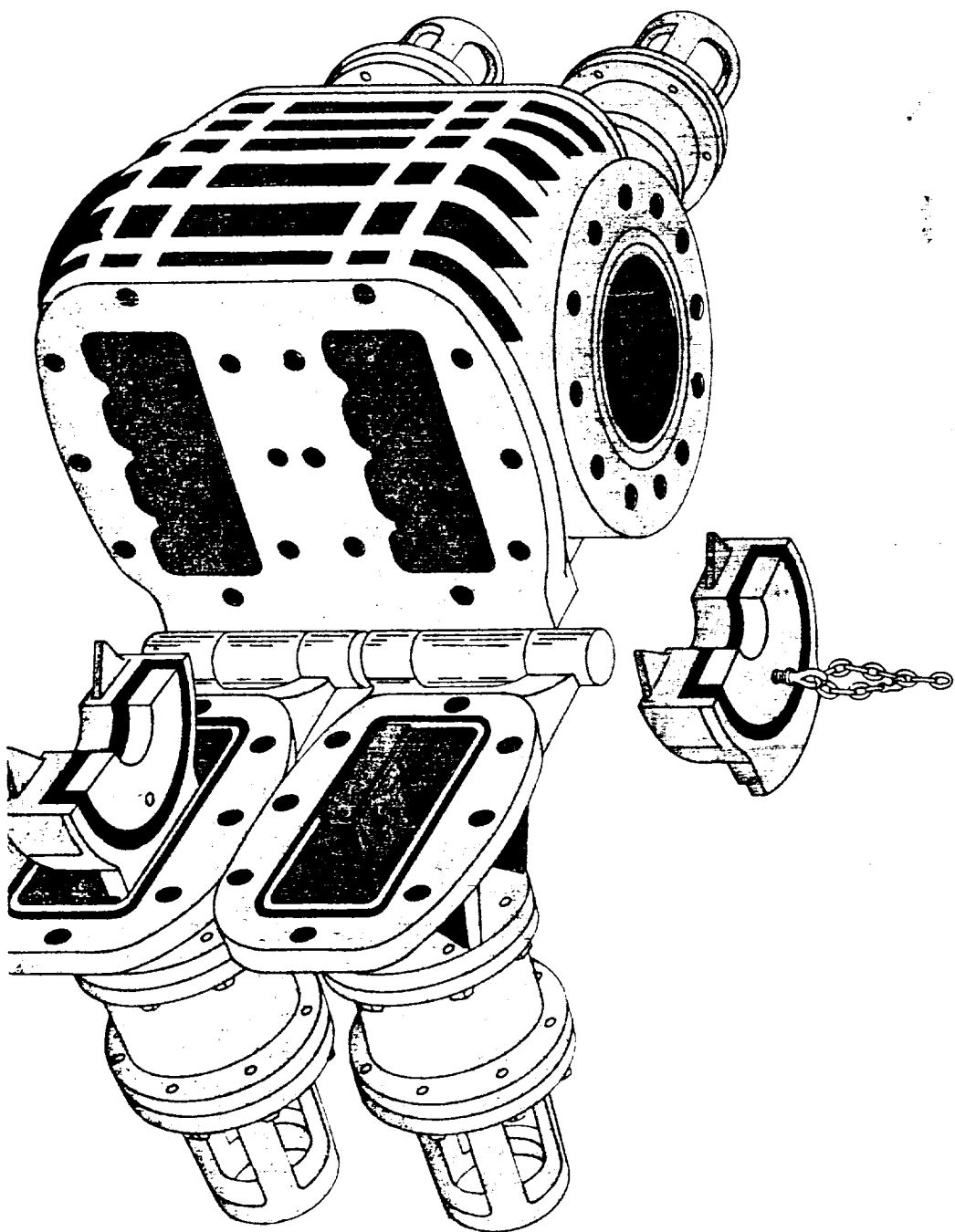


servicing operations. I may have the same basic features as LWS BOP's.

SPECIAL FEATURES

- **Ram mounts vertically onto ram shaft**, as shown below.
- **Manual-lock operators** are furnished on all LWP BOP's.
- **Flanged 2 1/2" - 3,000 psi side outlets** are available on the front and/or back (hinge) sides of the 9" LWP. No side outlets can be supplied on the 7 1/2" model.
- **Internal or full environmental H₂S trim** is optional on Model LWP BOP's.



rams in the fully open, the rams screws and swivel. Applying closing extends the ram. Replacement is onto the ram sh to return rams to bolting the door

MODEL LWP

**The hydraulic
below 1,000 psi
but the heavy-d
psi oil field accu**

Less than one LWP.

**Hydraulic pass
eliminate external**

MODEL LWF

**Manual-lock p
rams when c
desired, the r
position by tur
shoulders agai
pressure fail, th
locked. They ca**

The manual lo
and provide a c
Threads on the
the hydraulic fl
from mud and :

Rams are open to their "unlock hydraulic press and pull the ram