

NO. OF COPIES RECEIVED	0
DISTRIBUTION	
SANTA FE	1
FILE	1
U.S.G.S.	2
LAND OFFICE	1
OPERATOR	1

NEW MEXICO OIL CONSERVATION COMMISSION  
**RECEIVED**

JUL 21 1982

O. C. D.

30-015-24198

Form C-101  
Revised 1-1-65

5A. Indicate Type of Lease
STATE <input checked="" type="checkbox"/> FEE <input type="checkbox"/>
5. State Oil & Gas Lease No.
B-3635

APPLICATION FOR PERMIT TO DRILL, DEEPEN, OR PLUG BACK

1a. Type of Work		7. Unit Agreement Name	
b. Type of Well DRILL <input checked="" type="checkbox"/> DEEPEN <input type="checkbox"/> PLUG BACK <input type="checkbox"/> OIL WELL <input checked="" type="checkbox"/> GAS WELL <input type="checkbox"/> OTHER <input type="checkbox"/> SINGLE ZONE <input type="checkbox"/> MULTIPLE ZONE <input type="checkbox"/>		8. Farm or Lease Name Hover State	
2. Name of Operator J. Cleo Thompson		9. Well No. 3	
3. Address of Operator c/o Oil Reports & Gas Services, Inc., Box 763, Hobbs, NM 88241		10. Field and Pool, or Wildcat Square Lake	
4. Location of Well UNIT LETTER B LOCATED 660 FEET FROM THE North LINE AND 2630 FEET FROM THE East LINE OF SEC. 2 TWP. 17S RGE. 30E NMPM		12. County Eddy	
21. Elevations (Show whether DF, RT, etc.) 3774.8 GR		13. Proposed Depth 3200	19A. Formation San Andres
21A. Kind & Status Plug, Bond Blanket	21B. Drilling Contractor Trafalgar Drilling Co.	22. Approx. Date Work will start 8/1/82	

PROPOSED CASING AND CEMENT PROGRAM

SIZE OF HOLE	SIZE OF CASING	WEIGHT PER FOOT	SETTING DEPTH	SACKS OF CEMENT	EST. TOP
12 1/4	8 5/8	24#	500	250	Circ
7 7/8	5 1/2	15.5#	3200	500	500

Unorthodox location approved by Order R-6983

Completion to be conventional perforation and treatment

BCP as per attached diagram

Printed ID-1  
AP1 & BK  
7-23-82

APPROVAL VALID FOR 180 DAYS  
PERMIT EXPIRES 7-23-82  
UNLESS DRILLING UNDERWAY

IN ABOVE SPACE DESCRIBE PROPOSED PROGRAM: IF PROPOSAL IS TO DEEPEN OR PLUG BACK, GIVE DATA ON PRESENT PRODUCTIVE ZONE AND PROPOSED NEW PRODUCTIVE ZONE. GIVE BLOWOUT PREVENTER PROGRAM, IF ANY.

I hereby certify that the information above is true and complete to the best of my knowledge and belief.

Signed Dennis Walker Title Agent Date July 20, 1982  
(This space for State Use)

APPROVED BY Mike Walker TITLE OIL AND GAS INSPECTOR DATE JUL 23 1982  
CONDITIONS OF APPROVAL, IF ANY:

**MEXICO OIL CONSERVATION COMMISSION  
WELL LOCATION AND ACREAGE DEDICATION PLAT**

Form O-10,  
Supersedes O-12h  
Effective 1-1-65

All distances must be from the outer boundaries of the Section

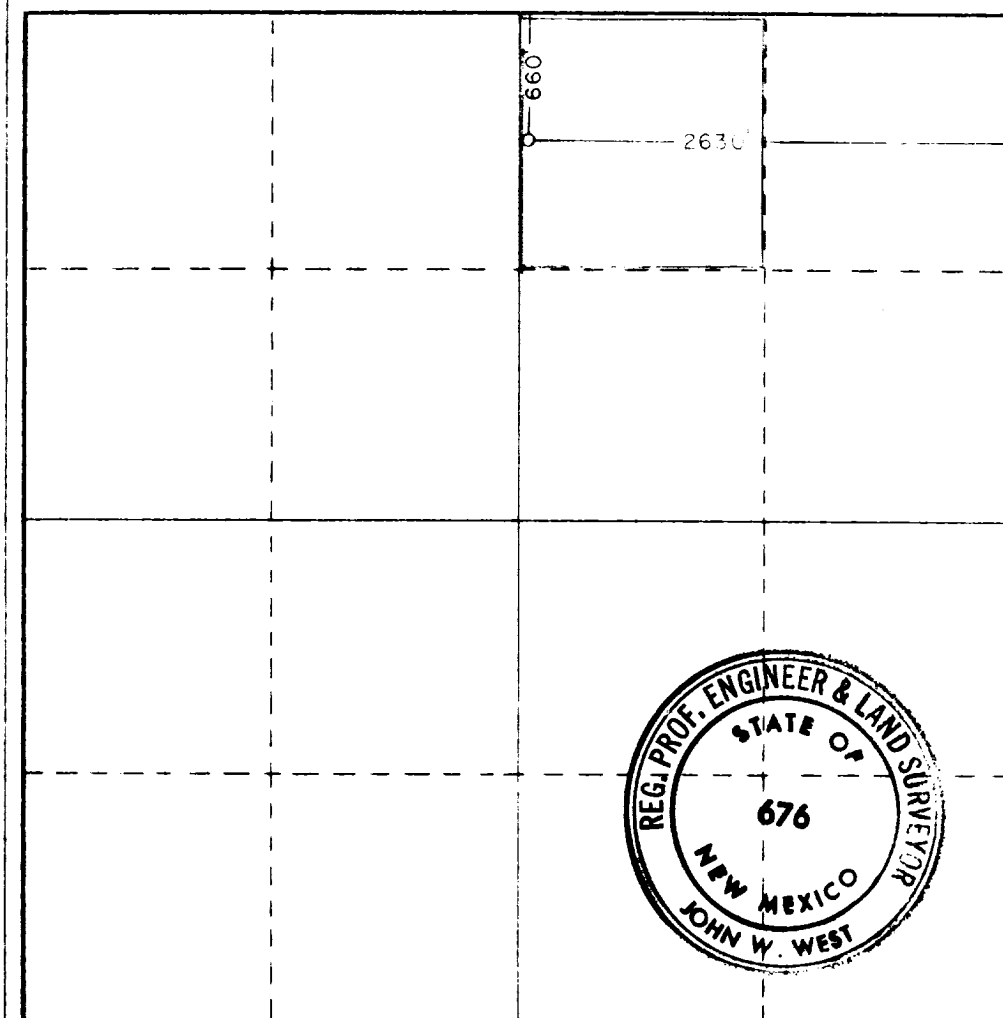
Operator <b>J. CLEO THOMPSON</b>			Lease <b>HOVER STATE</b>		Well No. <b>3</b>
Tract Letter <b>B</b>	Section <b>2</b>	Township <b>17 SOUTH</b>	Range <b>30 EAST</b>	County <b>EDDY</b>	
Annual Footage Location of Well: <div style="display: flex; justify-content: space-between;"> <span>660 feet from the NORTH line and</span> <span>2630 feet from the EAST line</span> </div>					
Ground Level Elev. <b>3774.8'</b>	Producing Formation <b>San Andres</b>	Foot <b>Square Lake - 6 50</b>		Estimated Acreage <b>40 3/8</b>	

1. Outline the acreage dedicated to the subject well by colored pencil or hatchure marks on the plat below.
2. If more than one lease is dedicated to the well, outline each and identify the ownership thereof (both as to working interest and royalty).
3. If more than one lease of different ownership is dedicated to the well, have the interests of all owners been consolidated by communitization, unitization, force-pooling, etc?

☐ Yes   ☐ No   If answer is "yes," type of consolidation \_\_\_\_\_

If answer is "no," list the owners and tract descriptions which have actually been consolidated (Use reverse side of this form if necessary.) \_\_\_\_\_

No allowable will be assigned to the well until all interests have been consolidated (by communitization, unitization, forced-pooling, or otherwise) or until a non-standard unit, eliminating such interests, has been approved by the Commission.



**CERTIFICATION**

I hereby certify that the information contained herein is true and complete to the best of my knowledge and belief.

Name  
*Donna Holmes*  
Position  
**Agent**

Company  
**J. Cleo Thompson**

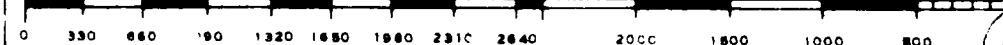
Date  
**July 20, 1982**

I hereby certify that the well location shown on this plat was plotted from field notes of actual surveys made by me or under my supervision, and that the same is true and correct to the best of my knowledge and belief.

Date Surveyed  
**JULY 6, 1982**

Registered Professional Engineer and/or Land Surveyor

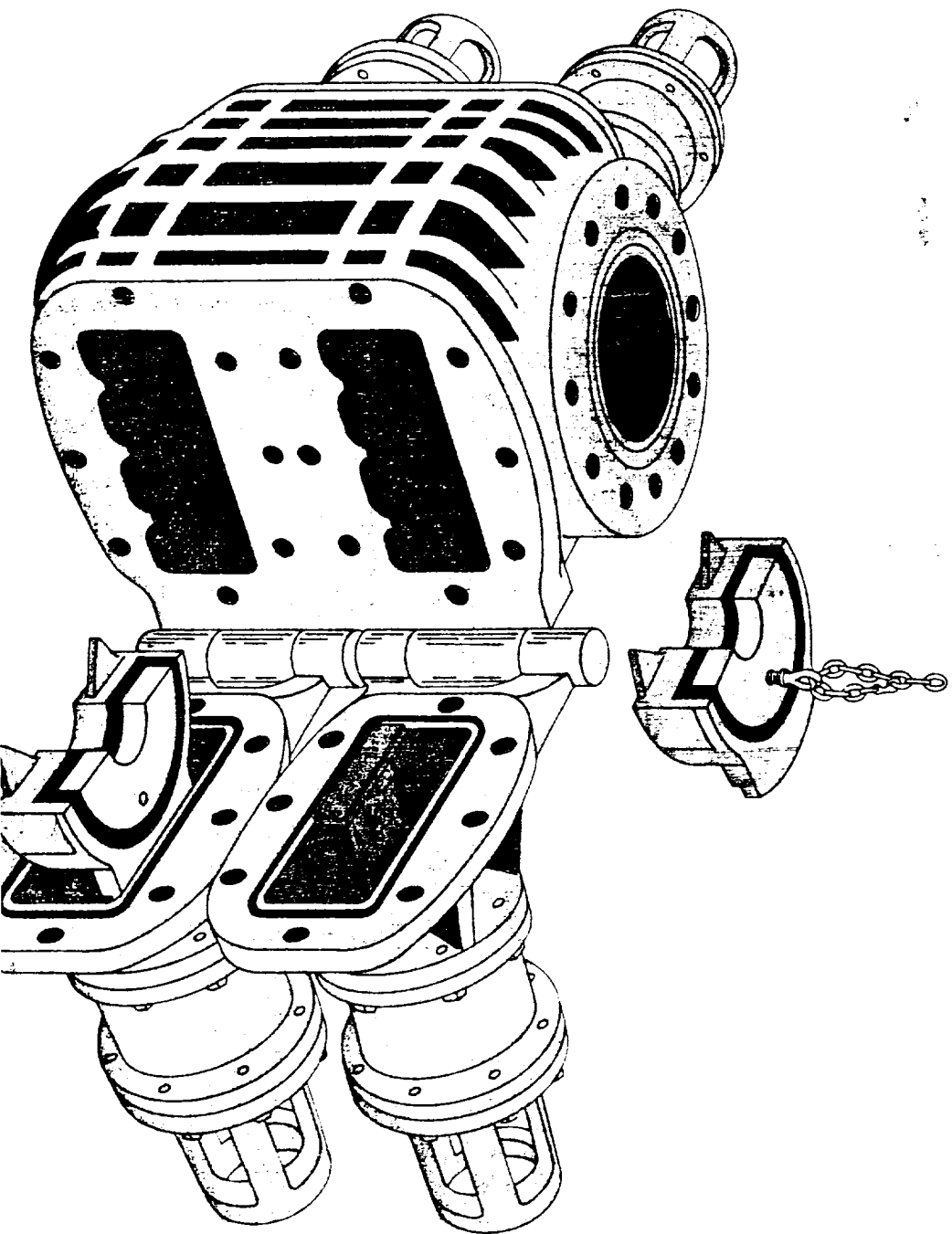
*John W. West*  
Certificate No. **JOHN W. WEST 676**  
**PATRICK A. ROMERO 6463**  
**Ronald J. Eidson 3239**



servicing operations. They have the same basic features as LWS BOP's.

## SPECIAL FEATURES

- **Ram mounts vertically onto ram shaft, as shown below.**
- **Manual-lock operators are furnished on all LWP BOP's.**
- **Flanged 2 1/8" -3,000 psi side outlets are available on the front and/or back (hinge) sides of the 9" LWP. No side outlets can be supplied on the 7 1/8" model.**
- **Internal or full environmental H<sub>2</sub>S trim is optional on Model LWP BOP's.**



rams in the fully open, the ram extends the ram Replacement is onto the ram sh to return rams t boiling the door

## MODEL LWF

**The hydraulic  
below 1,000 psi  
but the heavy-c  
psi oil field acc**

**Less than one LWP.**

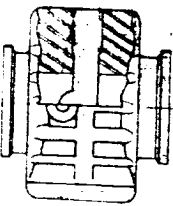
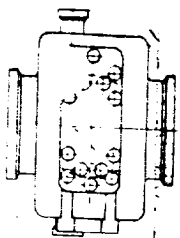
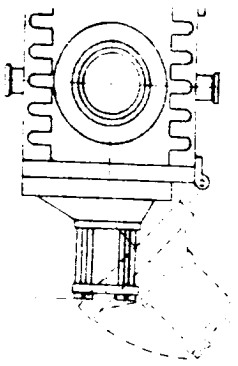
**Hydraulic pass  
eliminate external**

## MODEL LWF

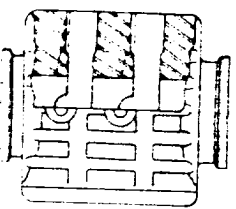
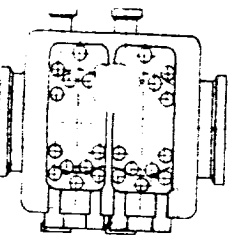
**Manual-lock p  
rams when c  
desired, the r  
position by tur  
shoulders agai  
pressure fail, th  
locked. They ca**

**The manual lo**  
and provide a c  
Threads on the  
the hydraulic fl  
from mud and s

**Rams are open**  
to their "unlock  
hydraulic press  
and pull the ram



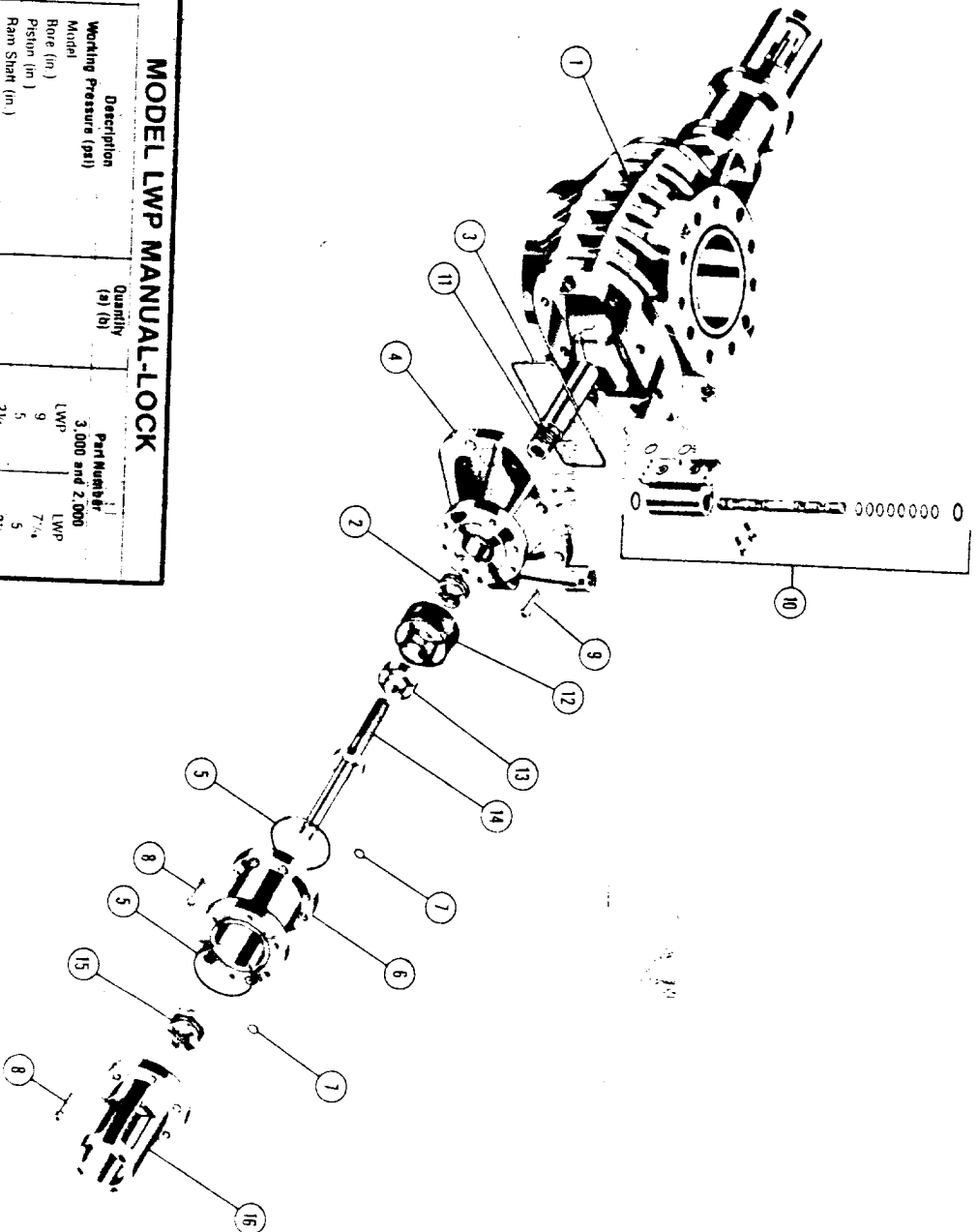
SINGLE



DOUBLE

# MODEL LWP MANUAL-LOCK

Item Number	Description	Quantity		Part Number	
		(a)	(b)	3,000 and 2,000 LWP	7 1/4 LWP
1	Body	2(2)		133531	133531
2	Ram Shaft Seal Assembly (a)	2(2)		030030	030030
3	Door Seal	1		130657	130657
4	Door (Left)	1		131402	130659
5	O-Ring Cylinder and Cylinder Head	4(4)		131403	030134
6	Cylinder (Left)	1		131404	130407
7	O-Ring Cylinder Manifold Port	1		131405	130406
8	Cap Screw, Socket Head	4(4)		010054	030058
9	Door Cap Screw	16(2)		131412	010554
10	Hinge Bracket Assembly, Right (d)	1(1)		132638	010753
11	Hinge Bracket Assembly, Left (d)	1(1)		132637	132667
12	Ram Shaft	2		130413	130410
13	Piston Assembly	2(2)		130413	130413
14	Lockout, Piston	2		130012	130012
15	Set Screw	2		020073	030023
16	O-Ring Piston	2(2)		141185	141184
17	Locking Shaft	2		132510	132510
18	Locking Shaft Seal Assembly (d)	2(2)		132510	132510
19	Cylinder Head Right	1		132510	132510



(a) Quantity shown for single model (an RUP) increase quantity proportionally to double or triple models.  
 (b) For recommended spare parts shown in parentheses, for single model (an RUP) increase quantity proportionally for double or triple models.  
 For Model 3 Standard assembly, spare parts kit, and one (d) for components, spare parts kit, and one (d) for components.

