

GEOLOGICAL SURVEY

APPLICATION FOR PERMIT TO DRILL, DEEPEN, OR PLUG BACK

1a. TYPE OF WORK

DRILL ☒DEEPEN ☐PLUG BACK ☐

b. TYPE OF WELL

OIL
WELL ☒GAS
WELL ☐OTHER ☐SINGLE
ZONE ☒MULTIPLE
ZONE ☐

2. NAME OF OPERATOR

Southland Royalty Company ✓

3. ADDRESS OF OPERATOR

21 Desta Drive, Midland, Texas 79701

4. LOCATION OF WELL (Report location clearly and in accordance with any State regulations*)

At surface

860' FSL & 1980' FWL, Sec. 35, T-17-S, R-29-E

At proposed prod. zone

14. DISTANCE IN MILES AND DIRECTION FROM NEAREST TOWN OR POST OFFICE*

4 miles Southwest of Loco Hills, N.M.

15. DISTANCE FROM PROPOSED*

LOCATION TO NEAREST
PROPERTY OR LEASE LINE, FT.
(Also to nearest drilg. unit line, if any) 660'

18. DISTANCE FROM PROPOSED LOCATION*

TO NEAREST WELL, DRILLING, COMPLETED,
OR APPLIED FOR, ON THIS LEASE, FT. 1380'

16. NO. OF ACRES IN LEASE

120

19. PROPOSED DEPTH

3300'

17. NO. OF ACRES ASSIGNED
TO THIS WELL

40

20. ROTARY OR CABLE TOOLS

Rotary

21. ELEVATIONS (Show whether DF, RT, GR, etc.)

3548.9' GR

22. APPROX. DATE WORK WILL START*

January 31, 1983

23.

PROPOSED CASING AND CEMENTING PROGRAM

SIZE OF HOLE	SIZE OF CASING	WEIGHT PER FOOT	SETTING DEPTH	QUANTITY OF CEMENT
12 1/4"	8 5/8"	24#	350'	400 sx. (Circulate)
7 7/8"	5 1/2"	15.5#	3300'	800 sx. (Circulate)

Drill 12 1/4" hole to 350'. Set 8 5/8" csg @ 350'. Circ cmt. Drill 7 7/8" hole to 3300'. Set 5 1/2" csg @ 3300'. Cmt w/800 sx. cmt. Perf & stimulate Grayburg & San Andres for production.

MUD PROGRAM: 0-275' spud mud; 275-3300' 10# Brine wtr; at TD sweep hole & condition w/9.8# brine gel. VIS 34-38.

BOP PROGRAM: BOP to be tested after setting 8 5/8" csg.

IN ABOVE SPACE DESCRIBE PROPOSED PROGRAM: If proposal is to deepen or plug back, give data on present productive zone and proposed new productive zone. If proposal is to drill or deepen directionally, give pertinent data on subsurface locations and measured and true vertical depths. Give blowout preventer program, if any.

24.

SIGNED F. W. Raul TITLE District Operations Engineer DATE 12-29-82

(This space for Federal or State office use)

PERMIT NO.

APPROVED

APPROVAL DATE

APPROVED BY

(ORIG. SGD.) DAVID R. GLASS

TITLE

DATE

CONDITIONS OF APPROVAL

JAN 14 1983

JAMES A. GILLHAM
DISTRICT SUPERVISOR

*See Instructions On Reverse Side

5. LEASE DESIGNATION AND SERIAL NO.

LC 028775-B

6. IF INDIAN, ALLOTTEE OR TRIBE NAME

7. UNIT AGREEMENT NAME

8. FARM OR LEASE NAME

F. M. Robinson "B" Unit III

9. WELL NO.

19

10. FIELD AND POOL, OR WILDCAT

Grayburg-Jackson (G, SR, SA, GB)

11. SEC., T., R., M., OR BLK.
AND SURVEY OR AREA

Sec. 35, T-17-S, R-29-E

12. COUNTY OR PARISH

Eddy

13. STATE

N.M.

OIL & GAS
MINERALS MGMT. SERVICE
ROSWELL, NEW MEXICOPost ID-1
1-21-83
New Loc. &
API

**NEW MEXICO OIL CONSERVATION COMMISSION
WELL LOCATION AND ACREAGE DEDICATION PLAT**

Form C-102
Supersedes C-128
Effective 1-1-65

All distances must be from the outer boundaries of the Section.

Operator Southland Royalty Company			Lease FM Robinson "B" Unit 3		Well No. 19
Unit Letter N	Section 35	Township 17 South	Range 29 East	County Eddy County	
Actual Footage Location of Well: <div style="display: flex; justify-content: space-between; align-items: center;"> 860 feet from the South line and 1980 feet from the West line </div>					
Ground Level Elev. 3548.9	Producing Formation Q, SR, SA, GB		Pool Grayburg-Jackson		Dedicated Acreage: 40 Acres

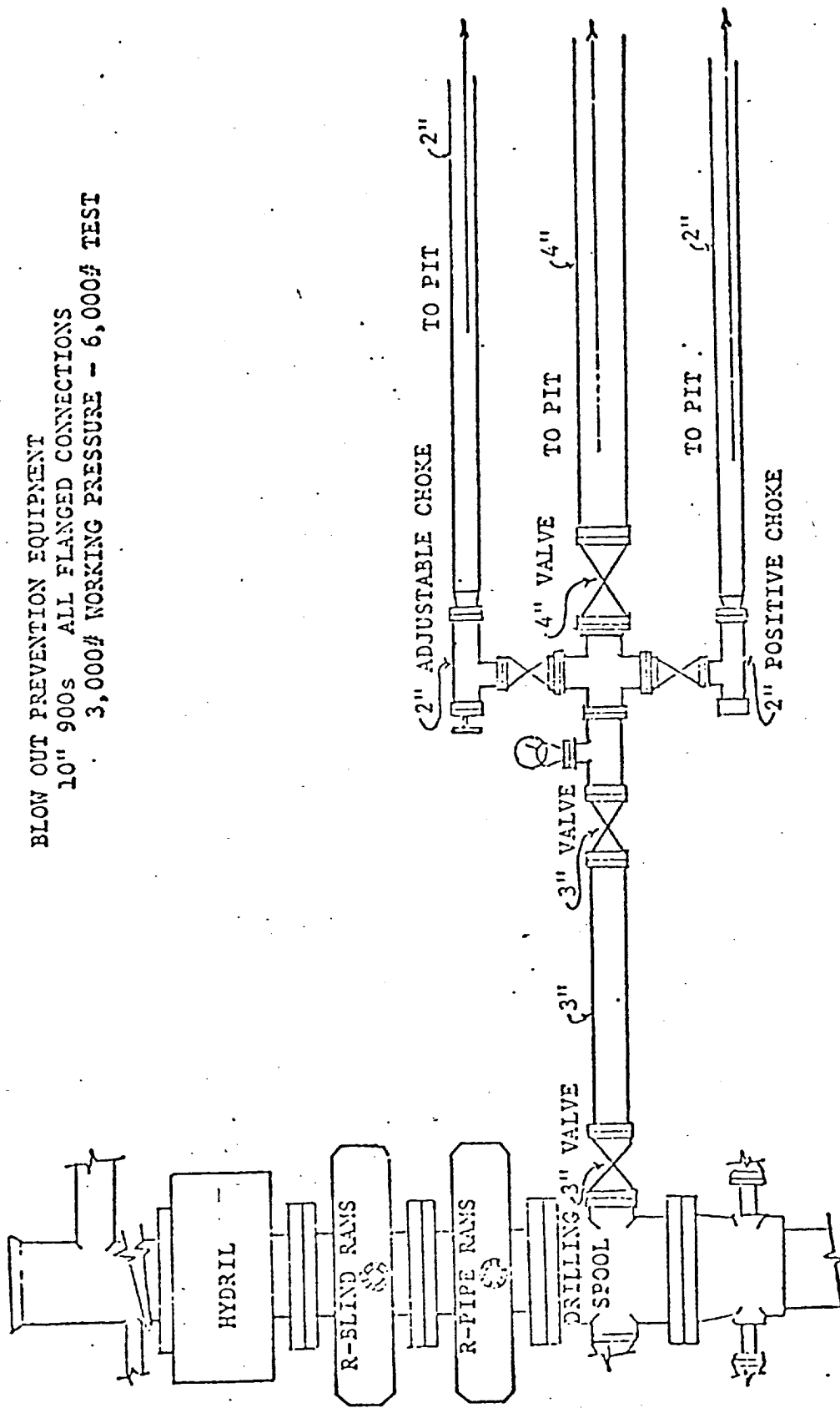
1. Outline the acreage dedicated to the subject well by colored pencil or hatchure marks on the plat below.
2. If more than one lease is dedicated to the well, outline each and identify the ownership thereof (both as to working interest and royalty).
3. If more than one lease of different ownership is dedicated to the well, have the interests of all owners been consolidated by communitization, unitization, force-pooling, etc?

☐ Yes ☐ No If answer is "yes," type of consolidation _____

If answer is "no," list the owners and tract descriptions which have actually been consolidated. (Use reverse side of this form if necessary.) _____

No allowable will be assigned to the well until all interests have been consolidated (by communitization, unitization, forced-pooling, or otherwise) or until a non-standard unit, eliminating such interests, has been approved by the Commission.

SOUTHLAND ROYALTY COMPANY 028775	SOUTHLAND ROYALTY COMPANY 028775
Southland Royalty Company 028775B	Southland Royalty Company 028775



BLOW OUT PREVENTION EQUIPMENT
 10" 900s ALL FLANGED CONNECTIONS
 3,000# WORKING PRESSURE - 6,000# TEST

SOUTHLAND ROYALTY COMPANY

F. M. Robinson "B" Unit III #19
860' FSL & 1980' FWL
Section 35, T-17-S, R-29-E
Eddy County, New Mexico
NM 028775-B

To supplement USGS Form 9-331C "Application to Drill" the following additional information is submitted concerning questions on Page 5 of NTL-6:

1. See Form 9-331C.
2. See Form 9-331C.
3. The geological name of surface formation is: Ochoa
4. See Form 9-331C.
5. See Form 9-331C.
6. The estimated tops of important geological markers are:

B/Salt	870'
Yates	1061'
Queen	2033'
Grayburg	2466'
San Andres	2916'
Jackson	3130'

7. The estimated depths at which anticipated water, oil, gas and mineral bearing strata are as follows:

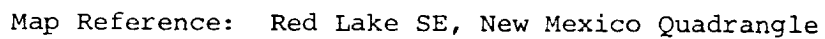
Grayburg	2466'
San Andres	2916'

8. See Form 9-331C. All casing will be new.
9. See Form 9-331C for depths of strings. Cement volumes and additions as follows:
 - A. 8 5/8" casing: Cement w/400 sx Class "C" w/2% CaCl. Cement to be circulated back to surface.
 - B. 5 1/2" casing: Cement w/600 sx Lite wt cement w/8# salt, 5# Gilsonite & 1/4# celloflake & 200 sx Class "C" w/2% CaCl w/3% salt & 1% CF-10.
10. The pressure control diagram is attached to Form 9-331C. The following additional information is as follows:

The BOP will be tested before drilling below surface pipe and before drilling thru anticipated oil or gas formation.

Testing Procedure: Test 8 5/8" casing - pressure to 1000 psi for 30 minutes before drilling below 8 5/8".
11. See Form 9-331C.
12.
 - A. DST Program: None
 - B. Cores: None
 - C. Mud Logging: None
 - D. Wire Line Logs: Compensated Neutron/GR

275-3300' (Cased Hole)



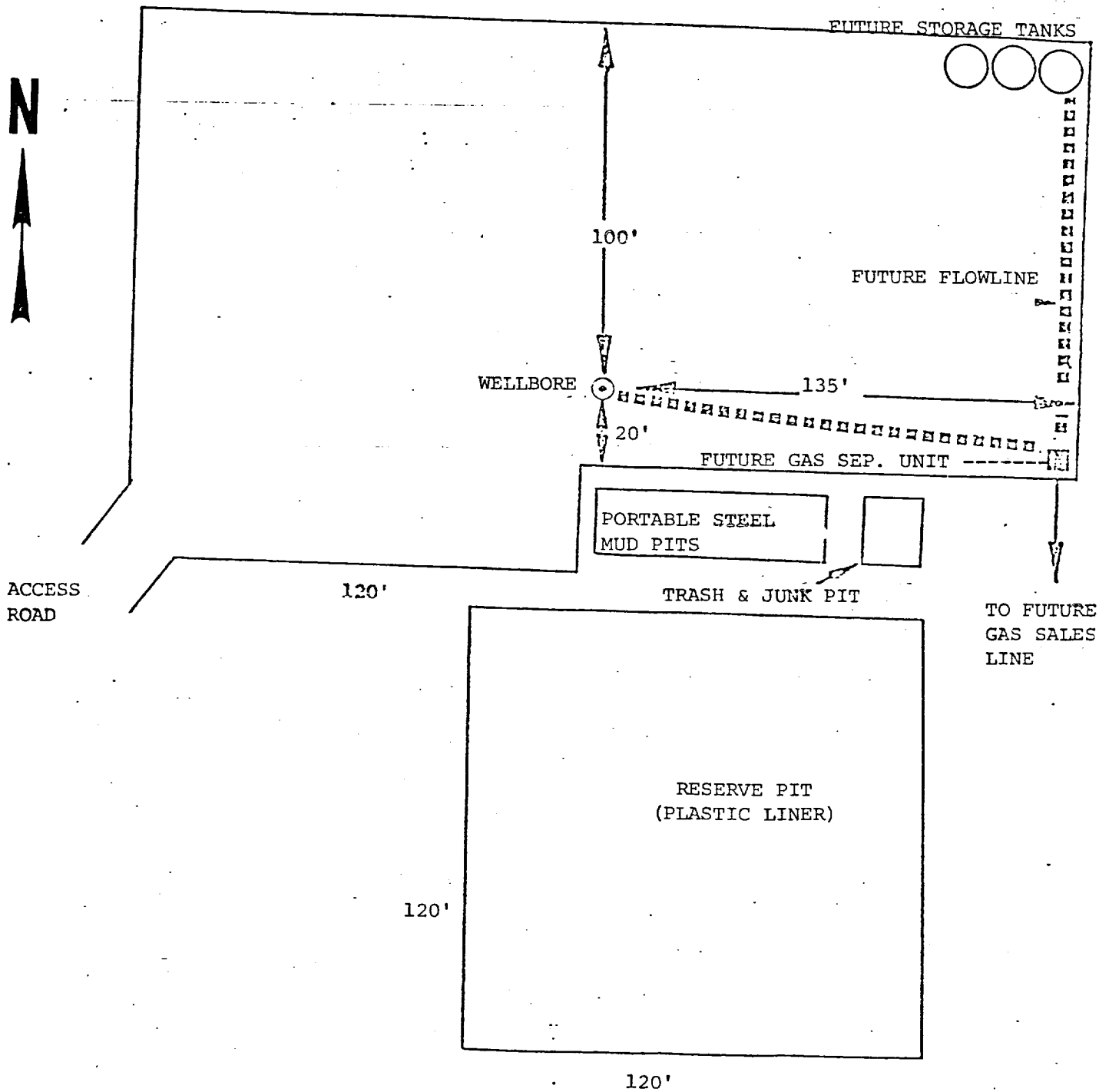


EXHIBIT "C"



Southland Royalty Company

21 DESTA DRIVE, MIDLAND, TEXAS 79701

F. M. Robinson "B" Unit III #19
 860' FSL & 1980' FWL
 Section 35, T-17-S, R-39-E
 Eddy County, New Mexico

Scale 1" = 40'