

UNITED STATES  
DEPARTMENT OF THE INTERIOR  
GEOLOGICAL SURVEY  
Oil & Gas  
Drawer DD  
Artesia, NM 88210

LC-028784-936

## APPLICATION FOR PERMIT TO DRILL, DEEPEN, OR PLUG BACK

## 1a. TYPE OF WORK

DRILL ☒DEEPEN ☐PLUG BACK ☐

## b. TYPE OF WELL

OIL  
WELL ☒GAS  
WELL ☐OTHER ☐SINGLE  
ZONE ☐MULTIPLE  
ZONE ☐

## 2. NAME OF OPERATOR

General American Oil Company of Texas

## 3. ADDRESS OF OPERATOR

P. O. Box 128 Loco Hills, New Mexico 88255

## 4. LOCATION OF WELL (Report location clearly and in accordance with any State requirements.)\*

At surface

790' FSL and 330' FWL

At proposed prod. zone

## 14. DISTANCE IN MILES AND DIRECTION FROM NEAREST TOWN OR POST OFFICE\* ARTESIA, OFFICE

4 miles west of Loco Hills, New Mexico 88255

## 15. DISTANCE FROM PROPOSED\*

LOCATION TO NEAREST  
PROPERTY OR LEASE LINE, FT.  
(Also to nearest drlg. unit line, if any)

330'

## 16. NO. OF ACRES IN LEASE

800

## 17. NO. OF ACRES ASSIGNED

TO THIS WELL 40

## 18. DISTANCE FROM PROPOSED LOCATION\*

TO NEAREST WELL, DRILLING, COMPLETED,  
OR APPLIED FOR, ON THIS LEASE, FT.

660'

## 19. PROPOSED DEPTH

3300'

## 20. ROTARY OR CABLE TOOLS

Rotary

## 21. ELEVATIONS (Show whether DF, RT, GR, etc.)

3578.4

## 22. APPROX. DATE WORK WILL START\*

January 15, 1983

## 23.

## PROPOSED CASING AND CEMENTING PROGRAM

SIZE OF HOLE	SIZE OF CASING	WEIGHT PER FOOT	SETTING DEPTH	QUANTITY OF CEMENT
12-1/4"	8-5/8"	32#	500'	Circulate
7-7/8"	5-1/2"	15.5#	3300'	350 sacks

We propose to drill this well to 3300' and complete in the Grayburg and San Andres.

Mud Program: Water and native mud will be used to 200' from T.D. Salt gel will be used the remainder of the hole.

All zones indicating porosity will be acidized or sand fraced.

A 10' 3000# blowout preventor will be used during drilling operations.

RECEIVED

JAN 17 1983

IN ABOVE SPACE DESCRIBE PROPOSED PROGRAM: If proposal is to deepen or plug back, give data on present productive zone and proposed new productive zone. If proposal is to drill or deepen directionally, give pertinent data on subsurface locations and measured or true vertical depths. Give blowout preventer program, if any.

## 24.

SIGNED

Rendell N. Hawkins

TITLE

Field Superintendent

DATE

January 4, 1983

(This space for Federal or State office use)

PERMIT NO.

APPROVAL DATE

APPROVED BY

TITLE

DATE

CONDITIONS OF APPROVAL, IF ANY

APPROVED

FEB 14 1983  
JAMES A. GILLHAM  
DISTRICT SUPERVISOR

See Instructions On Reverse Side

**NEW MEXICO OIL CONSERVATION COMMISSION  
WELL LOCATION AND ACREAGE DEDICATION PLAT**

Form C-102  
Supersedes C-128  
Effective 1-1-65

All distances must be from the outer boundaries of the Section.

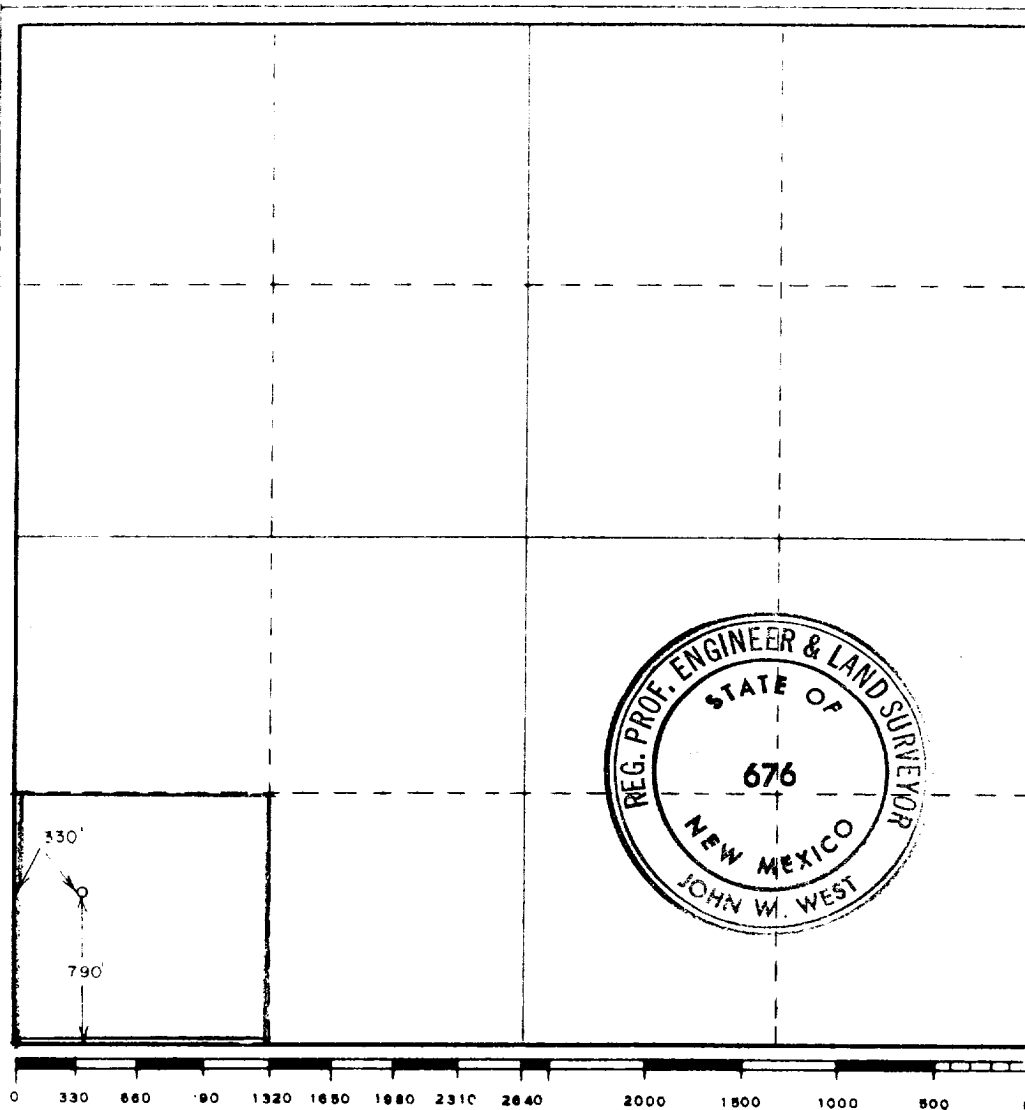
Operator <b>GENERAL AMERICAN OIL CO. OF TEXAS</b>			Lease <b>BURCH B</b>		Well No. <b>35</b>
Unit Letter <b>M</b>	Section <b>23</b>	Township <b>17S</b>	Range <b>29E</b>	County <b>EDDY</b>	
Actual Footage Location of Well: <b>790</b> feet from the <b>SOUTH</b> line and <b>330</b> feet from the <b>WEST</b> line					
Ground Level Elev. <b>3578.4</b>	Producing Formation <b>Grayburg-San Andres</b>		Pool <b>Grayburg-Jackson</b>		Dedicated Acreage: <b>40</b> Acres

1. Outline the acreage dedicated to the subject well by colored pencil or hatchure marks on the plat below.
2. If more than one lease is dedicated to the well, outline each and identify the ownership thereof (both as to working interest and royalty).
3. If more than one lease of different ownership is dedicated to the well, have the interests of all owners been consolidated by communitization, unitization, force-pooling, etc?

☐ Yes    ☐ No    If answer is "yes," type of consolidation \_\_\_\_\_

If answer is "no," list the owners and tract descriptions which have actually been consolidated. (Use reverse side of this form if necessary.) \_\_\_\_\_

No allowable will be assigned to the well until all interests have been consolidated (by communitization, unitization, forced-pooling, or otherwise) or until a non-standard unit, eliminating such interests, has been approved by the Commission.



**CERTIFICATION**

I hereby certify that the information contained herein is true and complete to the best of my knowledge and belief.

*Lendell N. Hawkins*  
Name

Lendell N. Hawkins

Position

Field Superintendent

Company

General American Oil CO. of Texas

Date

January 4, 1983

I hereby certify that the well location shown on this plat was plotted from field notes of actual surveys made by me or under my supervision, and that the same is true and correct to the best of my knowledge and belief.

Date Surveyed

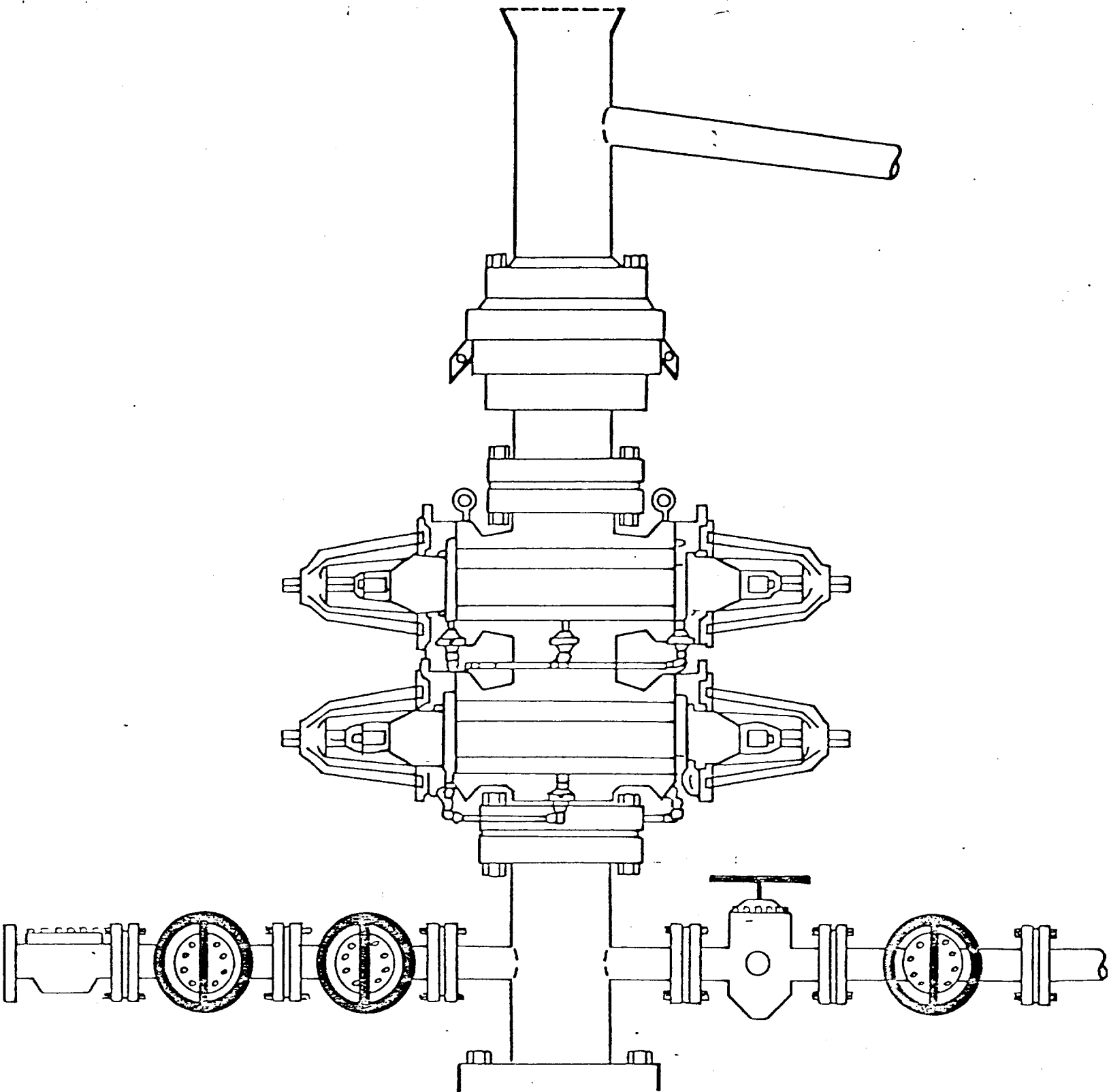
12/16/82

Registered Professional Engineer  
and/or Land Surveyor

*John W. West*  
Signature

Certificate No

JOHN W. WEST N.M.#676



### BLOWOUT PREVENTION EQUIPMENT

ONE SHAFFER LWS HYDRAULIC DOUBLE 10" x 1500  
SERIES. ONE SHAFFER SPHERICAL 10" x 1500 SERIES,  
CHOKE MANIFOLD 4" x 1500 SERIES FLANGED  
CONNECTIONS. PAYNE 4 VALVE ACCUMULATOR CLOSING UNIT.

# DRILLING PROGNOSIS

BURCH "B" #35  
GRAYBURG-JACKSON  
EDDY COUNTY, NEW MEXICO

- I. OBJECTIVE: Drill a infill well in the Grayburg Jackson Field, Eddy County, New Mexico.
- II LOCATION: 790' FSL and 350' FWL of Sec. 23, T-17S, R-29E, Eddy County, N.M.
- III. BUDGET CLASSIFICATION: Developmental.
- IV. PROJECTED TOTAL DEPTH, HOLE SIZE, SLOPE TEST, DRILL PIPE MEASUREMENTS:

- A. 12-1/4" hole to Top of Salt (Approximately 400' to 500') to accomodate 8-5/8" surface casing.
- B. 7-7/8" hole to total depth of 3300' to accomodate 5-1/2" production casing.
- C. Estimated drilling time of 6 to 7 days.
- D. Slope test will be run at each bit trip, 500' interval or as directed by the company representative.
- E. Drill pipe will be strapped out of hole before any coring, testing or logging.

## V. DRILLING CONTRACT:

- A. Contractor: Possibly W.E.K. Drilling Company or Salazar Brothers Drilling Company.
- B. Type of Contract: Footage
- C. Contract Depth: 3300'

## VI. MUD PROGRAM:

<u>Interval</u>	<u>Type Mud</u>	<u>Weight</u>	<u>Viscosity</u>	<u>WL</u>
0' - 200' from TD	Fresh & Salt Water	9-10	28 - 30	NC
200' from TD - TD	Salt Gel	10-11	36 - 40	NC

## VII. TYPICAL GEOLOGICAL TOPS FOR SECTION , TOWNSHIP 17-SOUTH, RANGE 29-EAST

<u>Top</u>	<u>Vertical Depth</u>	<u>Subsea Depth</u>
A. Queen	1807'	+ 1782'
B. Grayburg	1962'	+ 1627'
C. Loco Hills	2258'	+ 1331'
D. Metex	2370'	+ 1219'
E. San Andres	2496'	+ 1093'
F. Lovington	2586'	+ 1003'

## VIII. SAMPLES

- A. Samples will be taken at 10' intervals from 2200' to TD or as directed by the company representative.

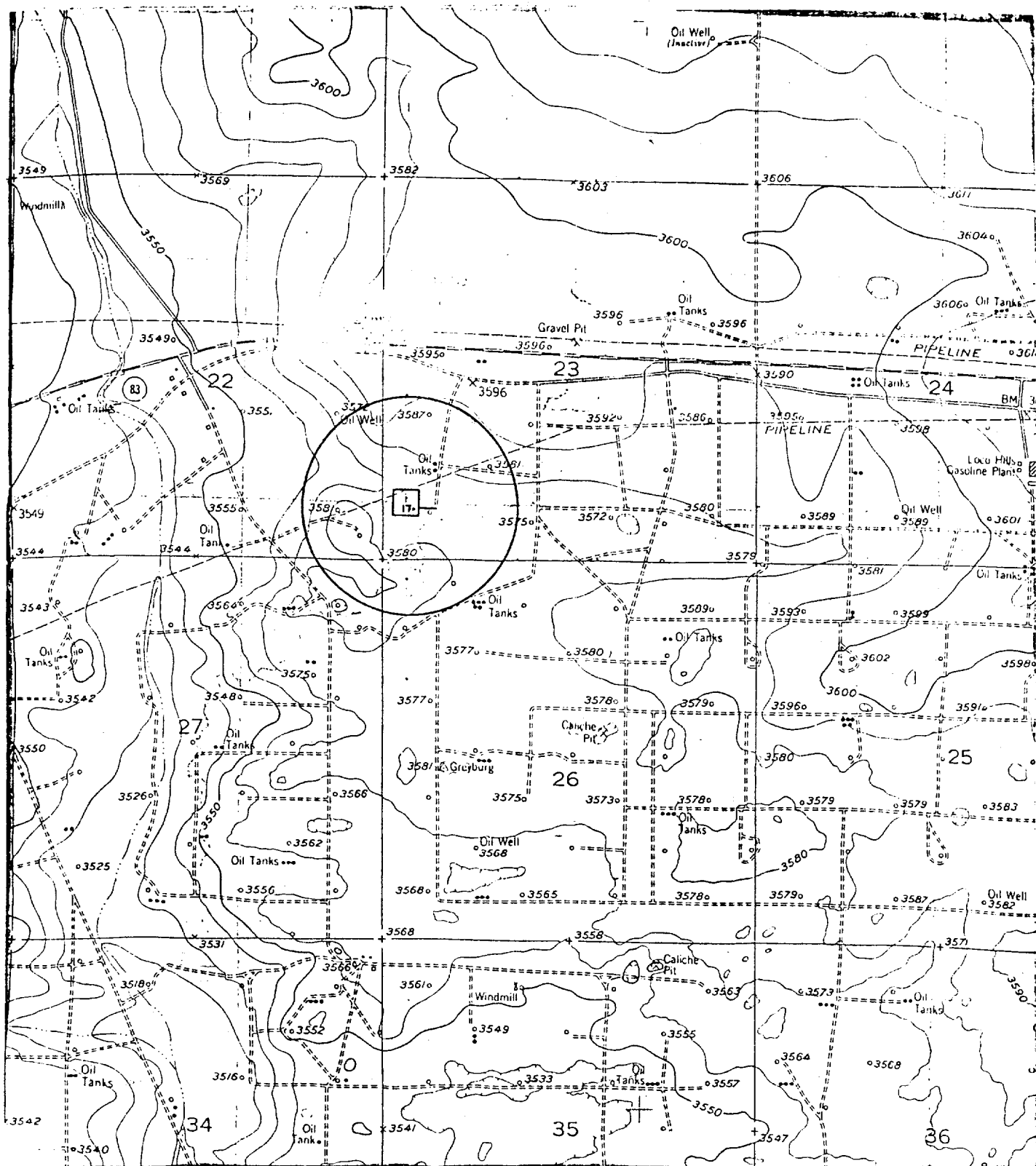
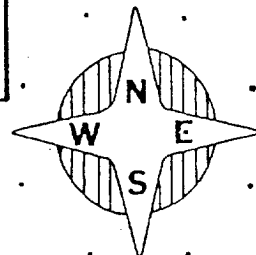
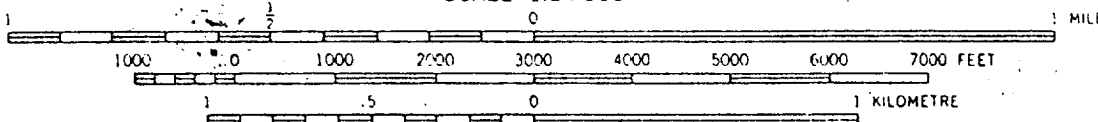


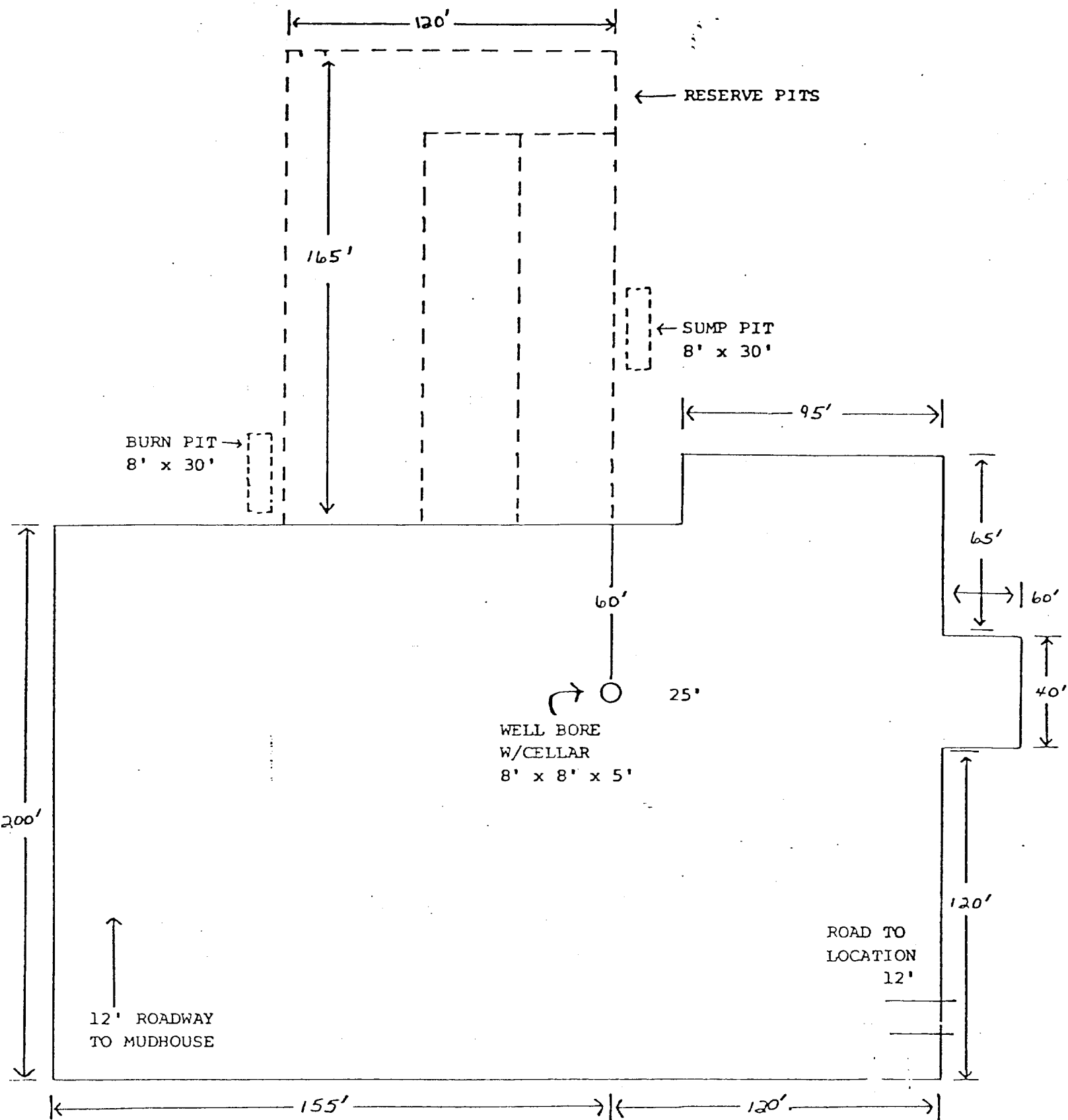
Figure 11: Location of Burch B #35 and Access Road  
Section 23, T17S, R29E, Eddy County, NM

Map: USGS Red Lake SE Quadrangle, 1955

7.5 MINUTE  
SERIES

SCALE 1:24 000





SCALE: 1 inch = 50 feet

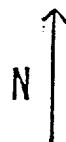


EXHIBIT "C"