

UNITED STATES
DEPARTMENT OF THE INTERIOR
GEOLOGICAL SURVEY

30-015-24450
5. LEASE DESIGNATION AND SERIAL NO.
-LC-049998-A
6. IF INDIAN, ALLOTTEE OR TRIBE NAME
7. UNIT AGREEMENT NAME
8. FARM OR LEASE NAME
Last Chance Fed.
9. WELL NO.
1
10. FIELD AND POOL, OR WILDCAT
Grayburg Jackson
11. SEC., T., R., M., OR BLK. AND SURVEY OR AREA
38-8 G-5A
17-17S-31E
12. COUNTY OR PARISH
Eddy
13. STATE
NM

APPLICATION FOR PERMIT TO DRILL, DEEPEN, OR PLUG BACK

1a. TYPE OF WORK
DRILL ☒ DEEPEN ☐ PLUG BACK ☐

b. TYPE OF WELL
OIL WELL ☒ GAS WELL ☐ OTHER ☐ SINGLE ZONE ☐ MULTIPLE ZONE ☐

2. NAME OF OPERATOR
Ray Westall

3. ADDRESS OF OPERATOR
P.O. Box 4 Loco Hills, NM 88255

4. LOCATION OF WELL (Report location clearly and in accordance with any State requirements.)
At surface 1650 FNL 2310 FEL
At proposed prod. zone

14. DISTANCE IN MILES AND DIRECTION FROM NEAREST TOWN OR POST OFFICE*
Five miles East of Loco Hills, NM

15. DISTANCE FROM PROPOSED* LOCATION TO NEAREST PROPERTY OR LEASE LINE, FT. (Also to nearest drg. unit line, if any) 1650'
16. NO. OF ACRES IN AREA, OFFICE OF ACRES ASSIGNED TO THIS WELL 80

18. DISTANCE FROM PROPOSED LOCATION* TO NEAREST WELL, DRILLING, COMPLETED, OR APPLIED FOR, ON THIS LEASE, FT. 990'
19. PROPOSED DEPTH 3600'

21. ELEVATIONS (Show whether DF, RT, GR, etc.)
3733.2 GR

23. PROPOSED CASING AND CEMENTING PROGRAM

SIZE OF HOLE	SIZE OF CASING	WEIGHT PER FOOT	SETTING DEPTH	QUANTITY OF CEMENT
12 1/2"	8 5/8"	24#	Approx. 550'	400 sx Cir.
8"	4 1/2"	10 1/2#	3600'	1000 sx

We propose to drill and test the Grayburg formation. Approximately 550' of surface casing will be set to shut off gravel and cavings. 4 1/2" production casing will be run, cemented, perforated and possibly sand frac'd for production.

APPROVAL SUBJECT TO
GENERAL REQUIREMENTS AND
SPECIAL STIPULATIONS
ATTACHED

RECEIVED
DEC 23 1982
OIL & GAS
MINERALS MGMT. SERVICE
ROSWELL, NEW MEXICO

IN ABOVE SPACE DESCRIBE PROPOSED PROGRAM: If proposal is to drill or deepen directionally, give data on proposed productive zone and proposed new productive zone. If proposal is to drill or deepen directionally, give data on proposed productive zone and proposed new productive zone. Give blowout preventer program, if any.

24. SIGNED Ray Westall TITLE Operator DATE 12-8-82

(This space for Federal or State office use)

PERMIT NO. APPROVED APPROVAL DATE
APPROVED BY TITLE DATE
CONDITIONS OF APPROVAL, IF ANY:
MAR 28 1983
JAMES A. GILLHAM
DISTRICT SUPERVISOR
Posted & PD
180-1-1-83
4-1-83

**NEW MEXICO OIL CONSERVATION COMMISSION
WELL LOCATION AND ACREAGE DEDICATION PLAT**

Form C-102
Supersedes C-128
Effective 1-1-65

All distances must be from the outer boundaries of the Section

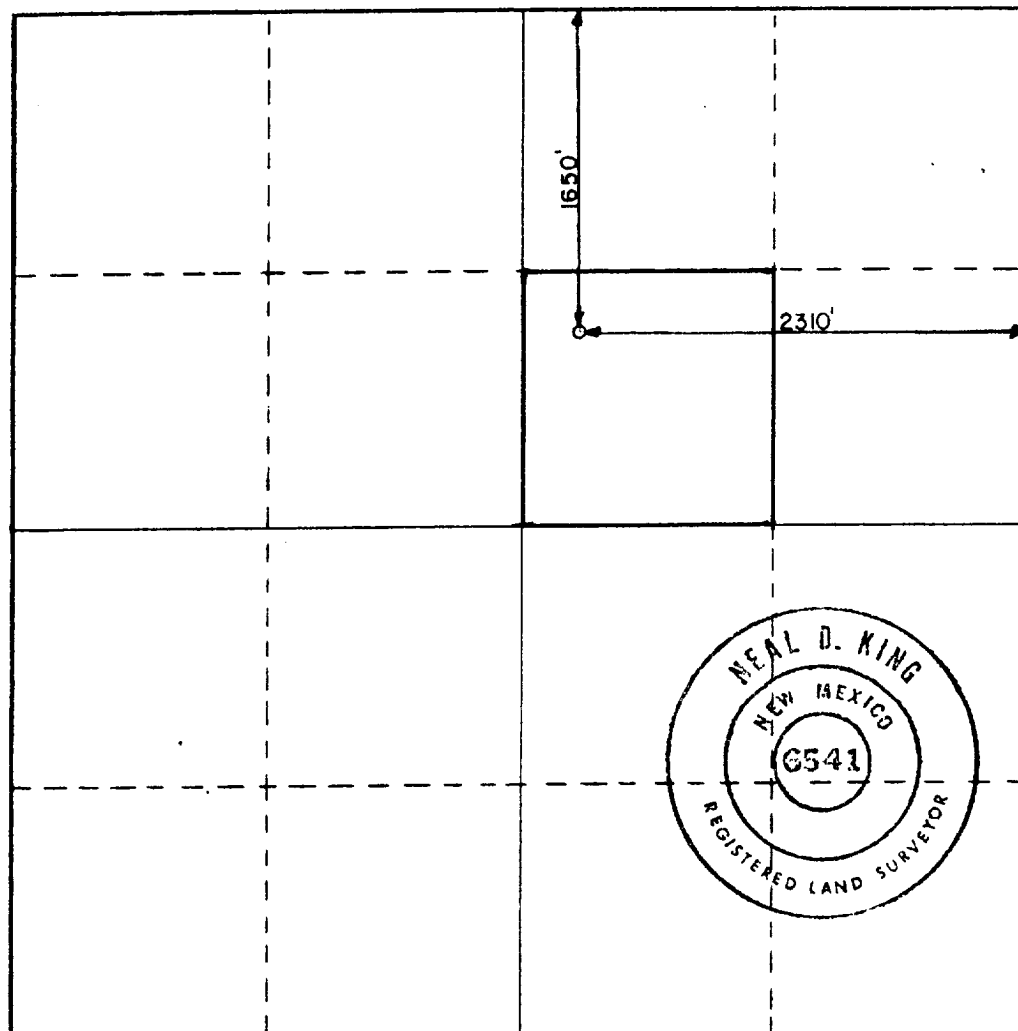
Operator Ray Westall			Lease Last Chance Federal		Well No. 1
Unit Letter G	Section 17	Township 17 South	Range 31 East	County Eddy	
Actual Footage Location of Well: 1650 feet from the North line and 2310 feet from the East line					
Ground Level Elev. 3733.2	Producing Formation Y-Q-Gr		Pool Grayburg-Jackson		Dedicated Acreage 40 Acres

1. Outline the acreage dedicated to the subject well by colored pencil or hatchure marks on the plat below.
2. If more than one lease is dedicated to the well, outline each and identify the ownership thereof (both as to working interest and royalty).
3. If more than one lease of different ownership is dedicated to the well, have the interests of all owners been consolidated by communitization, unitization, force-pooling, etc?

☐ Yes ☒ No If answer is "yes," type of consolidation _____

If answer is "no," list the owners and tract descriptions which have actually been consolidated. (Use reverse side of this form if necessary.) _____

No allowable will be assigned to the well until all interests have been consolidated (by communitization, unitization, forced-pooling, or otherwise) or until a non-standard unit, eliminating such interests, has been approved by the Commission.



CERTIFICATION

I hereby certify that the information contained herein is true and complete to the best of my knowledge and belief.

Name **Ray Westall**
Position **Operator**

Company
Ray Westall

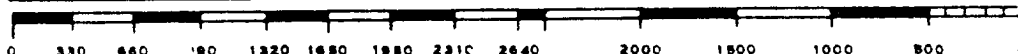
Date
12-08-82

I hereby certify that the well location shown on this plat was plotted from field notes of actual surveys made by me or under my supervision, and that the same is true and correct to the best of my knowledge and belief.

Date Surveyed **11-6-82**

Registered Professional Engineer
and/or Land Surveyor

Neal D. King
Certificate No. **6541**



APPLICATION FOR DRILLING

Ray Westall Last Chance #1
1650 FNL 2310 FEL Sec. 17,
T-17S, R-31E Eddy County, New Mexico

In conjunction with Form 9-331C, application for permit to drill subject well, Ray Westall submits the following ten items of pertinent information in accordance with the USGS requirements:

1. The geological surface formation is quaternary.
2. The estimated tops of geologic markers are as follows:

Yates	1800
7 Rivers	2050
Queen	2500
Grayburg	2800
3. The estimated depths at which anticipated water, oil and gas formations are expected to be encountered:

Water	Approximately 180'
Oil & Gas: Yates	1800
7 Rivers	2050
Queen	2500
Grayburg	2800
4. Proposed Casing Program: See Form 9-331C
5. Pressure Control Equipment: See Form 9-331C and Exhibit E.
6. Mud Program: Mud up to 150' before TD and circulate 2 hours after TD and pull out laying down and run casing.
7. Auxiliary Equipment: N/A
8. Testing, Logging and Coring Program: Logging casing compensated Neutron with Gamma Ray Collar log. Cement Bond with nuclear log.
9. No abnormal pressures or temperatures are anticipated.
10. Anticipated starting date: As soon as possible.

Exhibit E

Hydrolic
CAMERON SS 10" X 900 X 3000

